



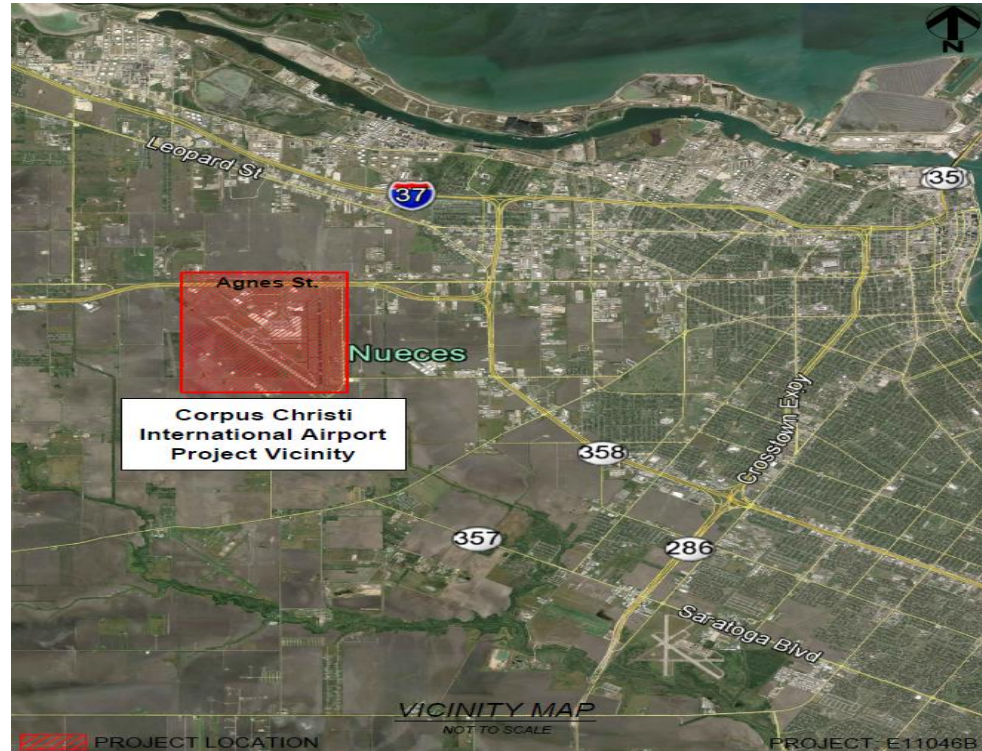
**Corpus Christi International Airport
CCIA Runway 18 Medium Approach Light
System with Runway Alignment Indicator
Lights (MALSR) Station 12 & 14 Safety
Enhancement**



**Council Presentation
January 12, 2016**



Project Location





Project Layout





Project Scope



Project includes:

- This project includes paving, drainage and traffic safety improvements for the access to and work sites for Runway 18 MALSR Stations 12 and 14.
- Approximately 1400 square yards of concrete pavement.
- 300 linear feet of new and relocated concrete safety barrier.



Project Schedule



2015						2016			
Jul	Aug	Sep	Oct	Nov	Dec	Jan	Feb	Mar	Apr
Re-Bid / Award							Construction		

Project Estimate: 90 Calendar Days \approx 3 Months