



# Zoning Case #0815-04

## Cheryl McLaughlin and Hatch, LLC

**From:** "RS-6" Single-Family 6 District and "RMH"  
Manufactured Home District

**To:** "RV" Recreational Vehicle Park District

Planning Commission  
Presentation  
September 9, 2015

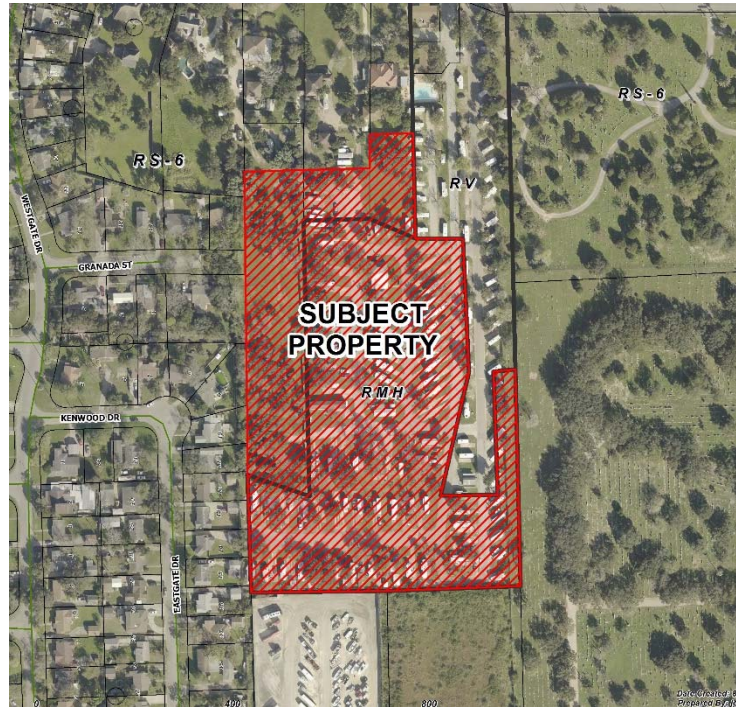


# Aerial Overview



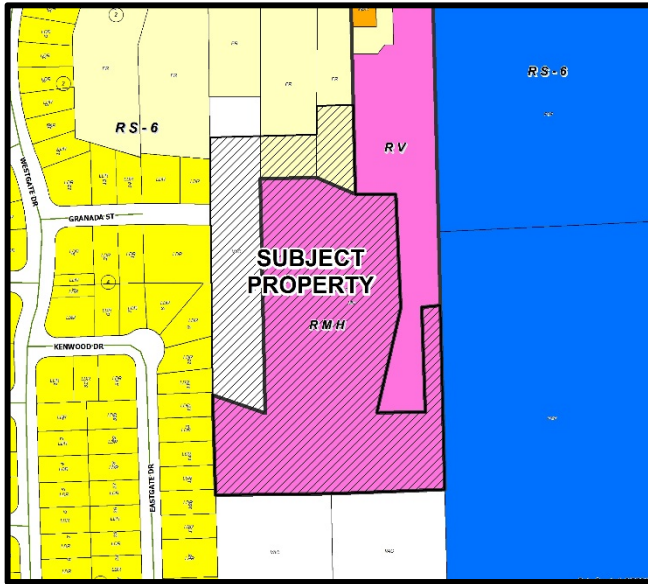


# Aerial

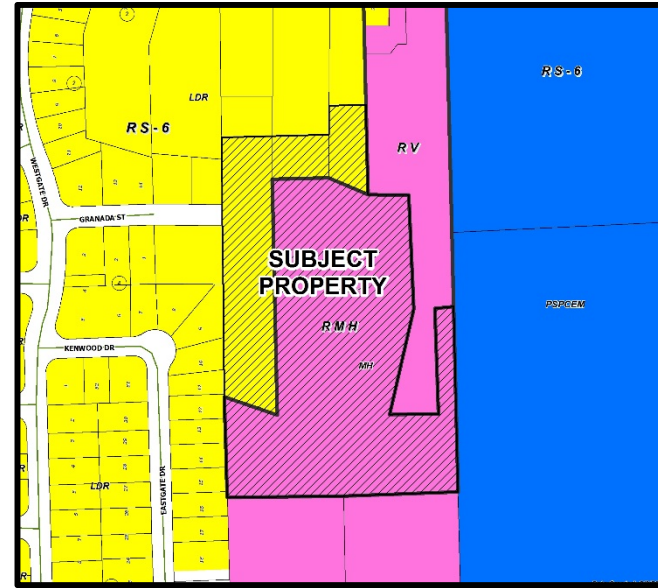




## Existing Land Use



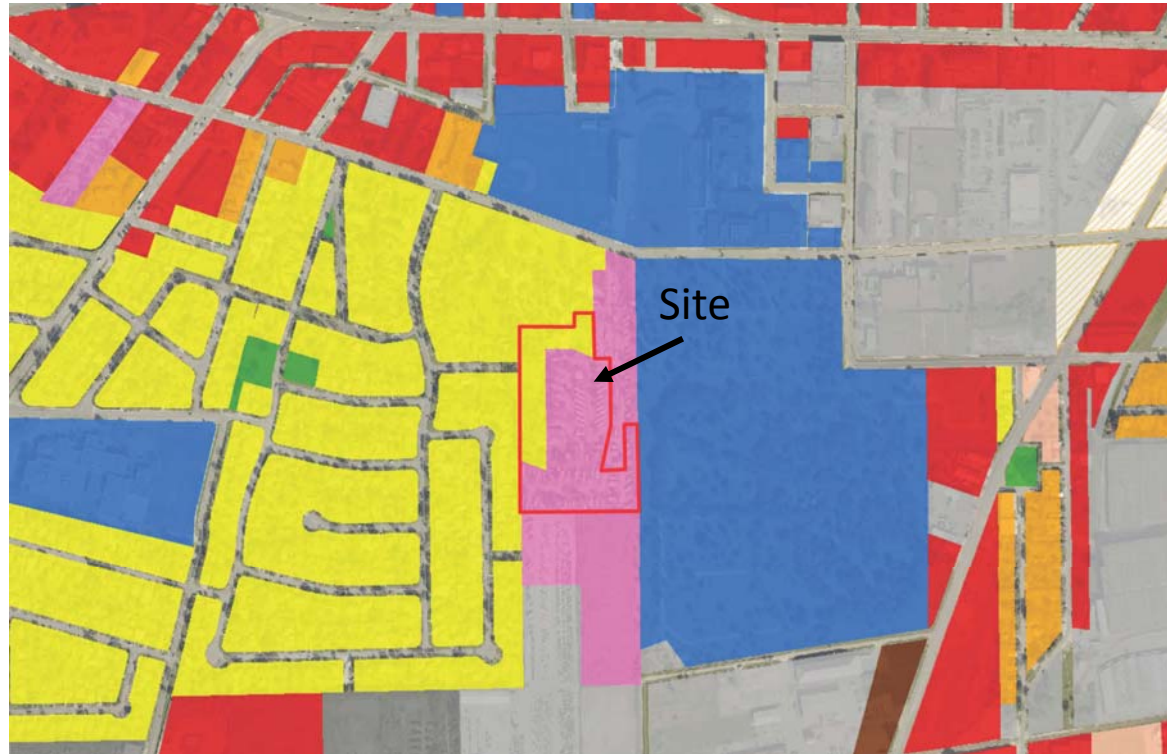
## Future Land Use



- Low Density Residential
- Estate Residential
- Medium Density Residential
- Mobile Home
- Vacant
- Public/Semi-Public



# Future Land Use Map





# West on Up River Road





# East on Up River Road





# Across Up River Road From Subject Property







# Hatch RV Park





# Hatch RV Park





## South on IH 69 Access Road Along Property Frontage





# Hatch RV Park





# Hatch RV Park





# Public Notification

37 Notices mailed inside 200' buffer  
6 Notice mailed outside 200' buffer

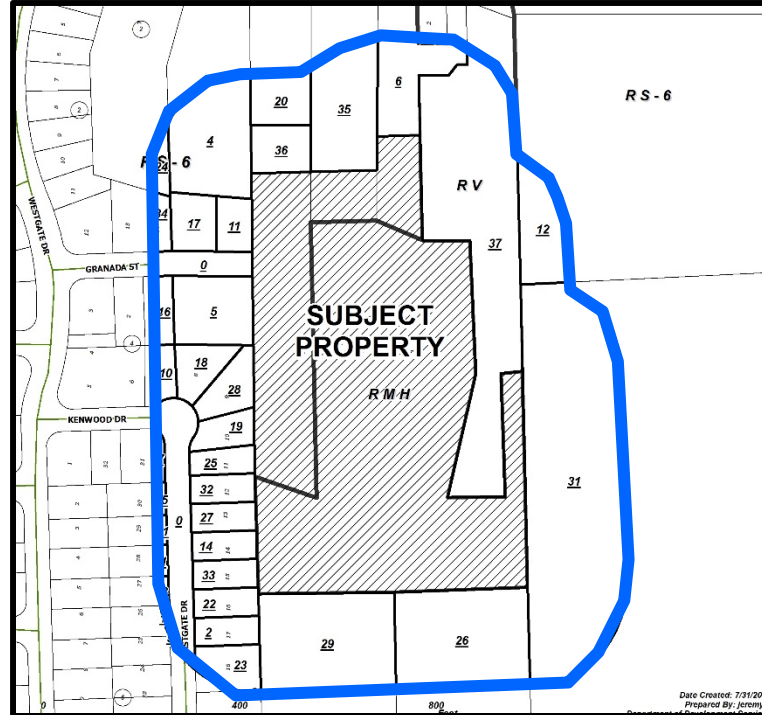
Notification Area



Opposed: 0 (0.00%)



In Favor: 0





# Staff Recommendation

---

## **Approval of the “RV” Recreational Vehicle Park District**