

SANITARY SEWER AND WATER IMPROVEMENTS

AIRPORT INDUSTRIAL SUBDIVISION, BLK 13, LOTS 3 & 4

CORPUS CHRISTI, NUECES CO., TX

CITY STANDARD SPECIFICATIONS

THE FOLLOWING CITY OF CORPUS CHRISTI STANDARD SPECIFICATIONS OF WHICH CAN BE OBTAINED FROM THE CITY OF CORPUS CHRISTI WEBSITE (WWW.CCTEXAS.COM) SHALL BE UTILIZED FOR THIS PROJECT. CONTRACTOR SHALL PRINT AND OBTAIN COPIES OF THESE SPECIFICATIONS PRIOR TO BIDDING THE WORK AND PRIOR TO CONSTRUCTION OF THE WORK. THE WORD "ENGINEER" AS USED IN SAID CITY STANDARD SPECIFICATIONS SHALL REFER TO BASS & WELSH ENGINEERING.

021020	SITE CLEARING AND STRIPPING
021040	SITE GRADING
022020	EXCAVATION AND BACKFILL FOR UTILITIES AND SEWERS
022022	TRENCH SAFETY FOR EXCAVATIONS
022040	STREET EXCAVATION
022080	EMBANKMENT
022420	SILT FENCE
025210	LIME STABILIZATION
025222	FLEXIBLE BASE - HIGH STRENGTH
025404	ASPHALTS, OILS AND EMULSIONS
025412	PRIME COAT
025424	HOT MIX ASPHALTIC CONCRETE PAVEMENT
025610	CONCRETE CURB AND GUTTER
025612	CONCRETE SIDEWALKS AND DRIVEWAYS
025614	CONCRETE CURB RAMPS
025802	TEMPORARY TRAFFIC CONTROLS DURING CONSTRUCTION
026201	WATER LINE RISER ASSEMBLY
026202	HYDROSTATIC TESTING OF PRESSURE SYSTEMS
026206	DUCTILE IRON PIPE AND FITTINGS
026210	PVC PIPE - AWWA C 900 AND C 905
026402	INSTALLATION OF WATER LINES
026404	WATER SERVICES
026411	GATE VALVES FOR WATER LINES
026416	FIRE HYDRANTS
027202	MANHOLES
027203	VACUUM TESTING OF SANITARY SEWER MANHOLES AND STRUCTURES
027205	FIBERGLASS MANHOLES
027402	REINFORCED CONCRETE PIPE CULVERTS
027602	GRAVITY SANITARY SEWERS
027606	SANITARY SERVICE LINES
028020	SEEDING
030020	PORTLAND CEMENT CONCRETE
032020	REINFORCING STEEL
038000	CONCRETE STRUCTURES
055420	FRAMES, GRATES, RINGS AND COVERS

CITY STANDARD DETAIL SHEETS

THE FOLLOWING SHEETS ARE INCLUDED IN A SEPARATE PDF SET OF PLANS AND ARE INCORPORATED HEREIN BY REFERENCE AND SHALL BE USED ON THIS PROJECT.

STANDARD WATER DETAILS
1 of 5 WATER DISTRIBUTION GENERAL NOTES
2 of 5 MAIN TO SERVICE DETAILS AND OTHERS
3 of 5 TRENCH BACKFILL & PAVEMENT REPAIR DETAILS, FLDG VALVE, CONNECTIONS & TYP. VALVE LAYOUT
4 of 5 FIRE HYDRANT, VALVE BOX AND LID
5 of 5 ADJUSTMENTS, CASING DETAILS, FLDG VALVE, CONNECTIONS AND TYP. VALVE LAYOUT

SANITARY SEWER STANDARD DETAILS
1 of 5 MANHOLE INSTALLATION
2 of 5 RING AND COVER DETAILS FOR 30" OPENING FOR 4' AND 5' MANHOLES
3 of 5 MANHOLE SURFACE PROTECTION AND AIR RELEASE VALVE DETAILS
4 of 5 SERVICE CONNECTIONS AND REHABILITATION OF EXISTING MANHOLES
5 of 5 PAVEMENT REPAIR/BACKFILL/GENERAL NOTES/CASING DETAILS

STANDARD STORM WATER DETAILS
1 of 2 INLET AND SIDEWALK MANHOLE RING AND COVER
2 of 2 TYPE A, B & C MANHOLES/TRENCH BACKFILL/PAVEMENT REPAIR/ROADWAY RING AND COVER

CURB, GUTTER AND SIDEWALK DETAILS - SHEET 1 OF 1

PEDESTRIAN CURB RAMP STANDARDS - SHEETS 1 - 5

TRAFFIC CONTROL DURING CONSTRUCTION

CONTRACTOR SHALL PREPARE A TRAFFIC CONTROL AND BARRICADING PLAN AND SUBMIT IT TO THE CITY TRAFFIC ENGINEERING DEPARTMENT FOR APPROVAL AND SHALL DO NO WORK UNTIL HE HAS RECEIVED WRITTEN APPROVAL FROM THE CITY OF SAID PLAN. ALL TRAFFIC CONTROL AND BARRICADING SHALL BE ACCOMPLISHED IN ACCORDANCE WITH SAID PLAN.

SANITARY SEWER NOTES

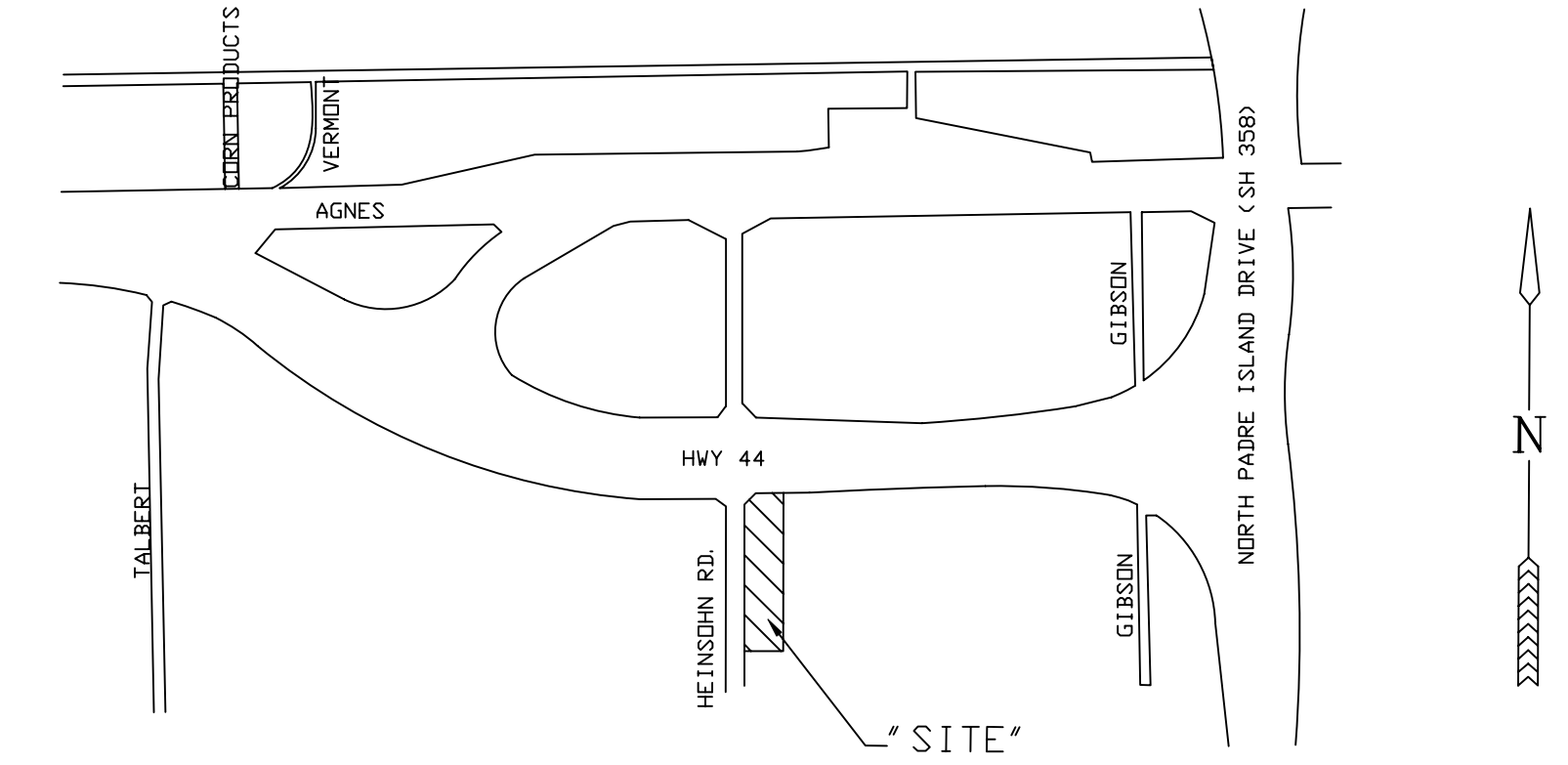
1. SET ENDS OF SERVICE LINES MID LOT FRONTAGE UNLESS SHOWN OTHERWISE.
2. ALL SANITARY SEWER STATIONING IS MEASURED ALONG THE CENTER LINE OF PROPOSED STREETS. ALL SANITARY SEWER MANHOLES SHALL BE FIBERGLASS, 48" MINIMUM DIAMETER UNLESS SHOWN OTHERWISE, 0.5" (MINIMUM) WALL AND CONSTRUCTED IN ACCORDANCE WITH CITY STANDARD SPECIFICATIONS.
3. ALL GRAVITY SEWER PIPES 8" THRU 18" SHALL BE PVC, SDR 26 AND SHALL BE BEDDED IN SAND WITH PI LESS THAN 10 TO 6" BELOW AND 6" TO SIDES OF PIPE (FULL HEIGHT OF PIPE), IN ACCORDANCE WITH CITY STANDARD SPECIFICATIONS. BED 4" AND SMALLER PIPES IN EARTH FROM THE EXCAVATION.

WATER NOTES

1. PROVIDE THRUST BLOCKS AT ALL 6" AND 8" WATER FITTINGS PURSUANT TO DETAILS AS SHOWN ON WATER DETAIL SHEETS.
2. PROVIDE CAST IRON BOXES AND PVC PIPE EXTENSIONS WITH CONCRETE AT GATE VALVES PURSUANT TO DETAILS AS SHOWN.
3. CONSTRUCT WATER RISERS AT END CAPS ON PIPES AND 2" BLOW-OFF VALVES FOR FILLING AND TESTING PURPOSES PURSUANT TO DETAILS AS SHOWN.
4. CONSTRUCT WATER SERVICE LINES AND CONNECTIONS PURSUANT TO THE NOTES AND DETAILS AS SHOWN.
5. ALL WATER MAINS SHALL BE DR18 PVC WITH DUCTILE IRON MECHANICAL JOINT FITTINGS AND SHALL BE BEDDED IN (ENCASED IN) SAND TO 6" ALL AROUND PIPE.
6. PROVIDE MINIMUM CLEARANCE BETWEEN WATER AND SANITARY SEWER LINES AND/OR MANHOLES AS REQUIRED BY THE TEXAS ADMINISTRATIVE CODE 317-3, APPENDIX "E", SEPARATION DISTANCE (AS REQUIRED BY TEXAS STATE WATER HYGIENE LAW).
7. ALL WATER SERVICE LINES SHALL BE 1" DIAMETER FOR SINGLE AND DOUBLE WATER SERVICES.
8. ALL PUBLIC WATER LINE CONSTRUCTION AND MATERIALS SHALL BE IN ACCORDANCE WITH REQUIREMENTS SET FORTH BY THE CITY OF CORPUS CHRISTI WATER DISTRIBUTION STANDARDS, DETAILS, AND PRACTICES. PVC PIPE AND FITTINGS FOR WATER LINES SHALL BE AWWA C-900, CLASS 150, WITH A DR OF 18. FIRE HYDRANTS WILL BE LOCKED ONTO VALVE BY USE OF RETAINER GLANDS ON DIP.

LEGEND

DC	DOWN GUY
EP	EDGE OF PAVEMENT
FL	FLOW LINE OR INVERT ELEVATION
⊖	FIRE HYDRANT (EXISTING)
◆	FIRE HYDRANT (PROPOSED)
G	GAS LINE
M.R.	MAP RECORDS
18" RCP	18" REINFORCED CONCRETE PIPE
PP	POWER POLE OR LIGHT POLE
R/W	RIGHT-OF-WAY LINE
8"SS	8" SANITARY SEWER LINE
S	SIGN
S=0.3%	LONGITUDINAL SLOPE
SSMH	SANITARY SEWER MANHOLE
TMKR	TELEPHONE MARKER
U.E.	UTILITY EASEMENT
8"W	8" WATER LINE
Y.R.	YARD REQUIREMENT



LOCATION MAP
1" = 1000'

CALL BEFORE YOU DIG!

Texas 811
PARTICIPANTS REQUEST
48 HOURS NOTICE BEFORE YOU DIG,
DRILL, OR BLAST - STOP AND CALL
811
Know what's below.
Call before you dig.

THE LONE STAR
NOTIFICATION COMPANY
AT 1-800-669-8344

SHEET INDEX

SHEET 1	COVER SHEET AND MISCELLANEOUS INFORMATION
SHEET 2	SANITARY SEWER AND WATER PLAN AND SANITARY SEWER PROFILE

GENERAL NOTES:

1. SUBSIDIARY WORK: IN THE COURSE OF FURNISHING OR CONSTRUCTING A COMPLETE WORK OR IMPROVEMENT, CERTAIN WORK MAY BE NECESSARY WHICH IS SUBSIDIARY TO THE ITEMS WHICH ARE ESTABLISHED AS PAY ITEMS. SOME SUCH SUBSIDIARY WORK MAY BE SHOWN AND SPECIFIED IN DETAIL IN THE PLANS AND SPECIFICATIONS, OTHER WORK MAY BE LESS COMPLETELY SHOWN, AND OTHER SUCH WORK WHICH IS ENTIRELY NECESSARY FOR THE SATISFACTORY COMPLETION OF THE WORK AS A WHOLE, MAY NOT BE NOTED ON THE PLANS OR IN THE SPECIFICATIONS. IT SHALL BE THE DUTY OF THE CONTRACTOR TO CARRY OUT ALL SUCH SUBSIDIARY WORK AS IF FULLY SHOWN, AND THE COST OF SUCH WORK SHALL BE MADE SUBSIDIARY TO THE ESTABLISHED PAY ITEM.
2. CONTRACTOR SHALL NOTIFY THE CITY OF CORPUS CHRISTI CONSTRUCTION INSPECTION DEPARTMENT (880-3555) AT LEAST 3 WORKING DAYS PRIOR TO BEGINNING ANY WORK ON PUBLIC IMPROVEMENTS. THE CITY WATER INSPECTOR MUST BE CONTACTED AT LEAST 48 HOURS BEFORE ANY WORK BEGINS ON PUBLIC WATER IMPROVEMENTS. CALL FRED PENA (826-1808) TO GET THE NAME AND NUMBER OF THE INSPECTOR WHO WILL BE ASSIGNED TO THIS PROJECT.
3. CONTRACTOR SHALL NOTIFY ALL APPROPRIATE UTILITY COMPANIES, INCLUDING TEXAS 811, 48 HOURS PRIOR TO ACTUAL CONSTRUCTION.
4. TRAFFIC CONTROL PLAN WILL BE REQUIRED FROM TRAFFIC ENGINEERING FOR ALL WORK IN PUBLIC ROW OR EASEMENT. ALL WORK AFFECTING TRUCK RIGHT OF WAY WILL REQUIRE TRUCK APPROVAL AND/OR PERMIT, AS APPLICABLE. ALL PERMITS MUST BE ISSUED BEFORE BEGINNING ANY WORK IN PUBLIC RIGHT OF WAY OR EASEMENT.
5. CONTRACTOR IS RESPONSIBLE FOR OBTAINING ALL APPLICABLE PERMITS AND/OR PAYING ANY APPLICABLE FEES. CONTRACTOR SHALL CONTACT CITY DEVELOPMENT SERVICES TO DETERMINE WHAT PERMITS AND FEES ARE REQUIRED.
6. CONTRACTOR SHALL PERFORM NO TRENCH EXCAVATIONS IN THE GROUND IN ANY PORTION OF THE PROJECT WITHOUT ALL EXISTING UNDERGROUND UTILITY LINES STAKED ON THE GROUND (TO IDENTIFY LOCATION) IN THE VICINITY OF CONTRACTOR'S TRENCHING OPERATIONS. CONTRACTOR SHALL CAUSE THE OWNERS OF UTILITY LINES TO STAKE THEIR UNDERGROUND LINES PRIOR TO ANY CONSTRUCTION.
7. CONTRACTOR SHALL PROVIDE OWNER A ONE YEAR GUARANTEE AND WARRANTY AGAINST ALL DEFECTS IN MATERIALS, WORKMANSHIP AND COMPACTION OF EARTH AND PAVING.



DEVELOPERS:
5961 HWY 44, LLC
5961 HWY 44,
CORPUS CHRISTI, TX 78406
361-438-5158

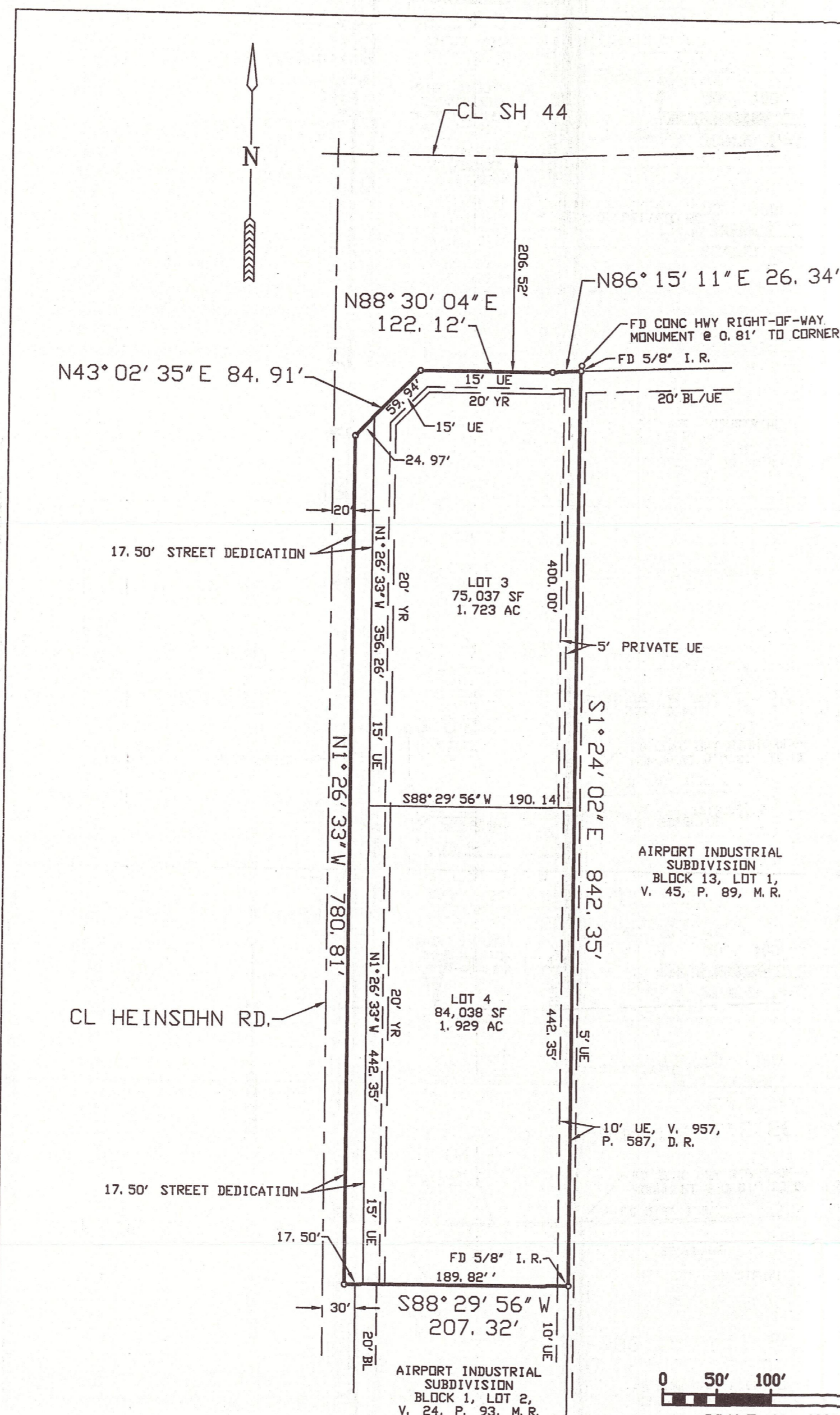
BENCHMARK (CITY DATUM, NGVD '29)

SEE FOLLOWING SHEET

Digitally signed by Renee Couture
DN: cn=Renee Couture, c=US,
o=Development Services,
ou=City of Corpus Christi,
email=ReneeC@cctexas.com
'Date: 2013.04.29 16:48:12 -05'00

PLANS ARE RELEASED FOR CONSTRUCTION
CITY OF CORPUS CHRISTI
DEVELOPMENT SERVICES
Construction shall begin within 6 months and will be completed within 1 year from date plans were released.

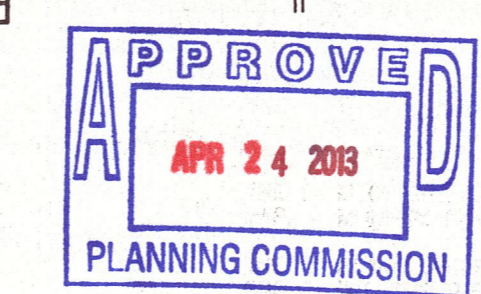
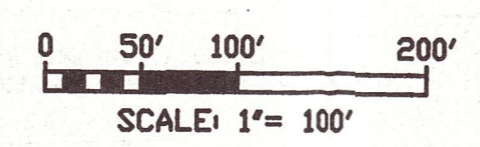
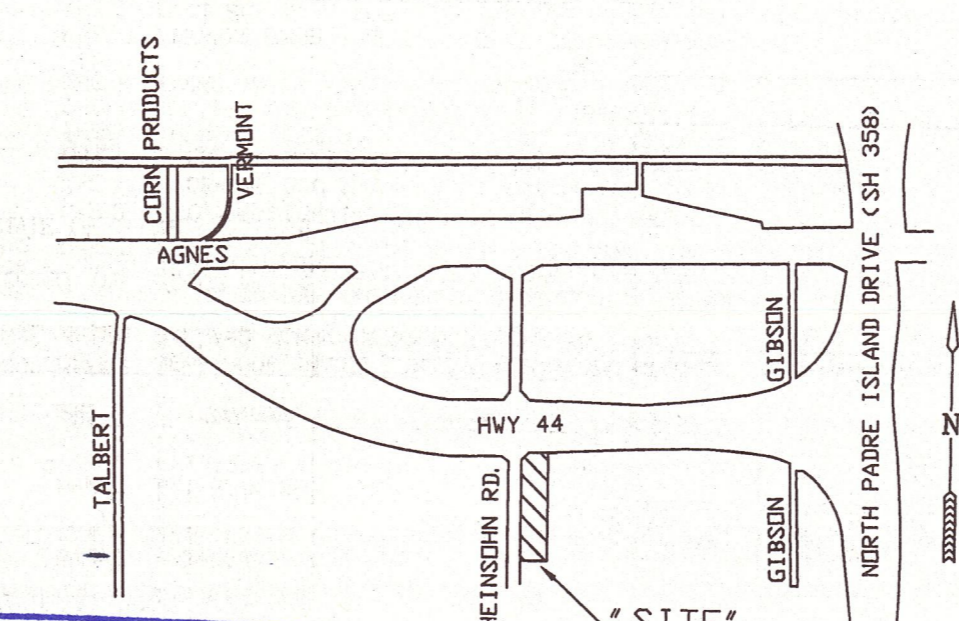
BASS AND WELSH ENGINEERING TX REGISTRATION NO. F-52, 3054 S. ALAMEDA STREET CORPUS CHRISTI, TEXAS 78404			
IMPROVEMENTS TO AIRPORT INDUSTRIAL SUBDIVISION, BLOCK 13, LOTS 3 & 4, CORPUS CHRISTI, NUECES CO., TX			
COVER SHEET AND MISCELLANEOUS INFORMATION			
DWN:	PLOT SCALE: SCALE (H): SCALE (V): DATE PLOTTED	1" = 60' AS SHOWN AS SHOWN 04/15/13	COM. NO. CS.DWG JOB NO. 12050 SHEET 1 OF 2
CHK:	N. WELSH		



STATE OF TEXAS §
 COUNTY OF NUECES §
 WE, 5961 HWY 44, LLC, HEREBY CERTIFY THAT WE ARE THE OWNERS OF THE LAND EMBRACED WITHIN THE BOUNDARIES OF THE FOREGOING PLAT, SUBJECT TO A LIEN IN FAVOR OF _____ THAT WE HAVE HAD SAID LAND SURVEYED AND SUBDIVIDED AS SHOWN, THAT STREETS AND EASEMENTS AS SHOWN HAVE BEEN HERETOFORE DEDICATED, OR IF NOT PREVIOUSLY DEDICATED, ARE HEREBY DEDICATED TO THE PUBLIC USE FOREVER, AND THAT THIS PLAT WAS MADE FOR THE PURPOSES OF DESCRIPTION AND DEDICATION.
 THIS THE _____ DAY OF _____, 20____.
 BY: _____
 TITLE: _____

STATE OF TEXAS §
 COUNTY OF NUECES §
 THIS INSTRUMENT WAS ACKNOWLEDGED BEFORE ME BY _____ (NAME), _____ (TITLE) OF 5961 HWY 44, LLC.
 THIS THE _____ DAY OF _____, 20____.
 NOTARY PUBLIC, IN AND FOR THE STATE OF TEXAS

- NOTES:
1. THE SUBJECT SITE IS IN ZONE "C", AREA OF MINIMAL FLOODING, ACCORDING TO FEMA MAP, COMMUNITY PANEL 485464 0165 C, REVISED SEPTEMBER 17, 1992.
 2. THE RECEIVING WATER FOR THE STORM WATER RUNOFF FROM THIS PROPERTY IS THE OSO CREEK. THE TCEQ HAS NOT CLASSIFIED THE AQUATIC LIFE USE FOR THE OSO CREEK, BUT IT IS RECOGNIZED AS AN ENVIRONMENTALLY SENSITIVE AREA. THE OSO CREEK FLOWS DIRECTLY INTO THE OSO BAY. THE TCEQ HAS CLASSIFIED THE AQUATIC LIFE USE FOR THE OSO BAY AS "EXCEPTIONAL" AND "OYSTER WATERS" AND CATEGORIZED THE RECEIVING WATER AS "CONTACT RECREATION USE".
 3. THE BASIS OF BEARINGS IS THE COMMON EAST BOUNDARY LINE OF THE SUBJECT SITE, S1°24'02"E, AS SHOWN, FROM ADJACENT PLAT TO EAST.
 4. THE YARD REQUIREMENT, AS DEPICTED, IS A REQUIREMENT OF THE NEW (UDC) UNIFIED DEVELOPMENT CODE AND IS SUBJECT TO CHANGE AS THE ZONING MAY CHANGE.
 5. SET 5/8" IRON RODS AT ALL CORNERS UNLESS SHOWN OTHERWISE.
 6. ACCESS ONTO STATE HIGHWAY 44 MUST COMPLY WITH TXDOT'S TRAFFIC ACCESS MANAGEMENT PLAN REGULATIONS.
 7. MAINTENANCE OF THE PRIVATE DETENTION PONDS WILL BE THE RESPONSIBILITY OF THE PROPERTY OWNER.



LOCATION MAP
 1" = 1500'

**PLAT OF
 AIRPORT INDUSTRIAL SUBDIVISION,
 BLOCK 13, LOTS 3 & 4**

A 3.969 ACRE TRACT OF LAND, MORE OR LESS, A PORTION OF THE WEST ONE-HALF OF BLOCK 6, J.C. RUSSELL FARM BLOCKS, A MAP OF WHICH IS RECORDED IN VOLUME 3, PAGE 53, MAP RECORDS, NUECES COUNTY, TEXAS
CORPUS CHRISTI, NUECES COUNTY, TEXAS

BASS & WELSH ENGINEERING
 FIRM NO. F-52, 3054 S. ALAMEDA ST.
 CORPUS CHRISTI, TEXAS 78404

DATE PLOTTED: 4/12/13
 FILE: PLAT AS PLAT.DWG
 JOB NO: 12050
 SCALE: 1" = 100'
 PLOT SCALE: SAME
 SHEET 1 OF 1

STATE OF TEXAS §
 COUNTY OF NUECES §
 I, NIXON M. WELSH, REGISTERED PROFESSIONAL LAND SURVEYOR OF BASS & WELSH ENGINEERING, HEREBY CERTIFY THAT THE FOREGOING PLAT WAS PREPARED FROM A SURVEY MADE ON THE GROUND UNDER MY DIRECTION, IS TRUE AND CORRECT.
 THIS THE _____ DAY OF _____, 20____.
 BY: _____
 TITLE: _____
 NIXON M. WELSH
 REGISTERED PROFESSIONAL
 LAND SURVEYOR,
 TEXAS NUMBER 2211

STATE OF TEXAS §
 COUNTY OF NUECES §
 WE, _____ (NAME), HEREBY CERTIFY THAT WE ARE THE HOLDERS OF A LIEN ON THE LAND EMBRACED WITHIN THE BOUNDARIES OF THE FOREGOING MAP AND THAT WE APPROVE THE SUBDIVISION AND DEDICATION FOR THE PURPOSES AND CONSIDERATIONS THEREIN EXPRESSED.
 BY: _____
 TITLE: _____

STATE OF TEXAS §
 COUNTY OF NUECES §
 THIS INSTRUMENT WAS ACKNOWLEDGED BEFORE ME BY _____
 THIS THE _____ DAY OF _____, 20____.
 NOTARY PUBLIC, IN AND FOR THE STATE OF TEXAS

STATE OF TEXAS §
 COUNTY OF NUECES §
 THE FINAL PLAT OF THE HEREIN DESCRIBED PROPERTY WAS APPROVED BY THE DEPARTMENT OF DEVELOPMENT SERVICES OF THE CITY OF CORPUS CHRISTI, TEXAS
 CHARLES F. DIBRELL, III, P.E.
 DEVELOPMENT SERVICES ENGINEER

DATE _____
 STATE OF TEXAS §
 COUNTY OF NUECES §
 THE FINAL PLAT OF THE HEREIN DESCRIBED PROPERTY WAS APPROVED ON BEHALF OF THE CITY OF CORPUS CHRISTI, TEXAS BY THE PLANNING COMMISSION.
 THIS THE _____ DAY OF _____, 20____.
 CHAIRMAN: GOVIND NADKARNI, P.E., C.E.
 SECRETARY: MARK E. VAN VLECK, P.E.

STATE OF TEXAS §
 COUNTY OF NUECES §
 I, DIANA T. BARRERA, CLERK OF THE COUNTY COURT IN AND FOR SAID COUNTY, DO HEREBY CERTIFY THAT THE FOREGOING INSTRUMENT DATED THE _____ DAY OF _____, 20____ WITH ITS CERTIFICATE OF AUTHENTICATION, WAS FILED FOR RECORD IN MY OFFICE THE _____ DAY OF _____, 20____ AT _____ O'CLOCK _____ M., AND DULY RECORDED THE _____ DAY OF _____, 20____ AT _____ O'CLOCK _____ M. IN THE MAP RECORDS OF SAID COUNTY IN VOLUME _____, PAGE _____, INSTRUMENT NUMBER _____
 WITNESS MY HAND AND SEAL OF THE COUNTY COURT IN AND FOR SAID COUNTY AT OFFICE IN CORPUS CHRISTI, NUECES COUNTY, TEXAS, THE DAY AND YEAR LAST WRITTEN.

BY: _____ DEPUTY _____
 DIANA T. BARRERA, CLERK
 COUNTY COURT
 NUECES COUNTY, TEXAS

Exhibit B

SANITARY SEWER AND WATER IMPROVEMENTS

AIRPORT INDUSTRIAL SUBDIVISION, BLK 13, LOTS 3 & 4

CORPUS CHRISTI, NUECES CO., TX

CITY STANDARD SPECIFICATIONS

THE FOLLOWING CITY OF CORPUS CHRISTI STANDARD SPECIFICATIONS OF WHICH CAN BE OBTAINED FROM THE CITY OF CORPUS CHRISTI WEBSITE (WWW.CCTEXAS.COM) SHALL BE UTILIZED FOR THIS PROJECT. CONTRACTOR SHALL PRINT AND OBTAIN COPIES OF THESE SPECIFICATIONS PRIOR TO BIDDING THE WORK AND PRIOR TO CONSTRUCTION OF THE WORK. THE WORD "ENGINEER" AS USED IN SAID CITY STANDARD SPECIFICATIONS SHALL REFER TO BASS & WELSH ENGINEERING.

021020	SITE CLEARING AND STRIPPING
021040	SITE GRADING
022020	EXCAVATION AND BACKFILL FOR UTILITIES AND SEWERS
022022	TRENCH SAFETY FOR EXCAVATIONS
022040	STREET EXCAVATION
022080	EMBANKMENT
022420	SILT FENCE
025210	LIME STABILIZATION
025222	FLEXIBLE BASE - HIGH STRENGTH
025404	ASPHALTS, OILS AND EMULSIONS
025412	PRIME COAT
025424	HOT MIX ASPHALTIC CONCRETE PAVEMENT
025610	CONCRETE CURB AND GUTTER
025612	CONCRETE SIDEWALKS AND DRIVEWAYS
025614	CONCRETE CURB RAMPS
025802	TEMPORARY TRAFFIC CONTROLS DURING CONSTRUCTION
026201	WATER LINE RISER ASSEMBLY
026202	HYDROSTATIC TESTING OF PRESSURE SYSTEMS
026206	DUCTILE IRON PIPE AND FITTINGS
026210	PVC PIPE - AWWA C 900 AND C 905
026402	INSTALLATION OF WATER LINES
026404	WATER SERVICES
026411	GATE VALVES FOR WATER LINES
026416	FIRE HYDRANTS
027202	MANHOLES
027203	VACUUM TESTING OF SANITARY SEWER MANHOLES AND STRUCTURES
027205	FIBERGLASS MANHOLES
027402	REINFORCED CONCRETE PIPE CULVERTS
027602	GRAVITY SANITARY SEWERS
027606	SANITARY SERVICE LINES
028020	SEEDING
030020	PORTLAND CEMENT CONCRETE
032020	REINFORCING STEEL
038000	CONCRETE STRUCTURES
055420	FRAMES, GRATES, RINGS AND COVERS

CITY STANDARD DETAIL SHEETS

THE FOLLOWING SHEETS ARE INCLUDED IN A SEPARATE PDF SET OF PLANS AND ARE INCORPORATED HEREIN BY REFERENCE AND SHALL BE USED ON THIS PROJECT.

STANDARD WATER DETAILS
1 of 5 WATER DISTRIBUTION GENERAL NOTES
2 of 5 MAIN TO SERVICE DETAILS AND OTHERS
3 of 5 TRENCH BACKFILL & PAVEMENT REPAIR DETAILS, FLDG VALVE, CONNECTIONS & TYP. VALVE LAYOUT
4 of 5 FIRE HYDRANT, VALVE BOX AND LID
5 of 5 ADJUSTMENTS, CASING DETAILS, FLDG VALVE, CONNECTIONS AND TYP. VALVE LAYOUT

SANITARY SEWER STANDARD DETAILS
1 of 5 MANHOLE INSTALLATION
2 of 5 RING AND COVER DETAILS FOR 30" OPENING FOR 4' AND 5' MANHOLES
3 of 5 MANHOLE SURFACE PROTECTION AND AIR RELEASE VALVE DETAILS
4 of 5 SERVICE CONNECTIONS AND REHABILITATION OF EXISTING MANHOLES
5 of 5 PAVEMENT REPAIR/BACKFILL/GENERAL NOTES/CASING DETAILS

STANDARD STORM WATER DETAILS
1 of 2 INLET AND SIDEWALK MANHOLE RING AND COVER
2 of 2 TYPE A, B & C MANHOLES/TRENCH BACKFILL/PAVEMENT REPAIR/ROADWAY RING AND COVER

CURB, GUTTER AND SIDEWALK DETAILS - SHEET 1 OF 1

PEDESTRIAN CURB RAMP STANDARDS - SHEETS 1 - 5

TRAFFIC CONTROL DURING CONSTRUCTION

CONTRACTOR SHALL PREPARE A TRAFFIC CONTROL AND BARRICADING PLAN AND SUBMIT IT TO THE CITY TRAFFIC ENGINEERING DEPARTMENT FOR APPROVAL AND SHALL DO NO WORK UNTIL HE HAS RECEIVED WRITTEN APPROVAL FROM THE CITY OF SAID PLAN. ALL TRAFFIC CONTROL AND BARRICADING SHALL BE ACCOMPLISHED IN ACCORDANCE WITH SAID PLAN.

SANITARY SEWER NOTES

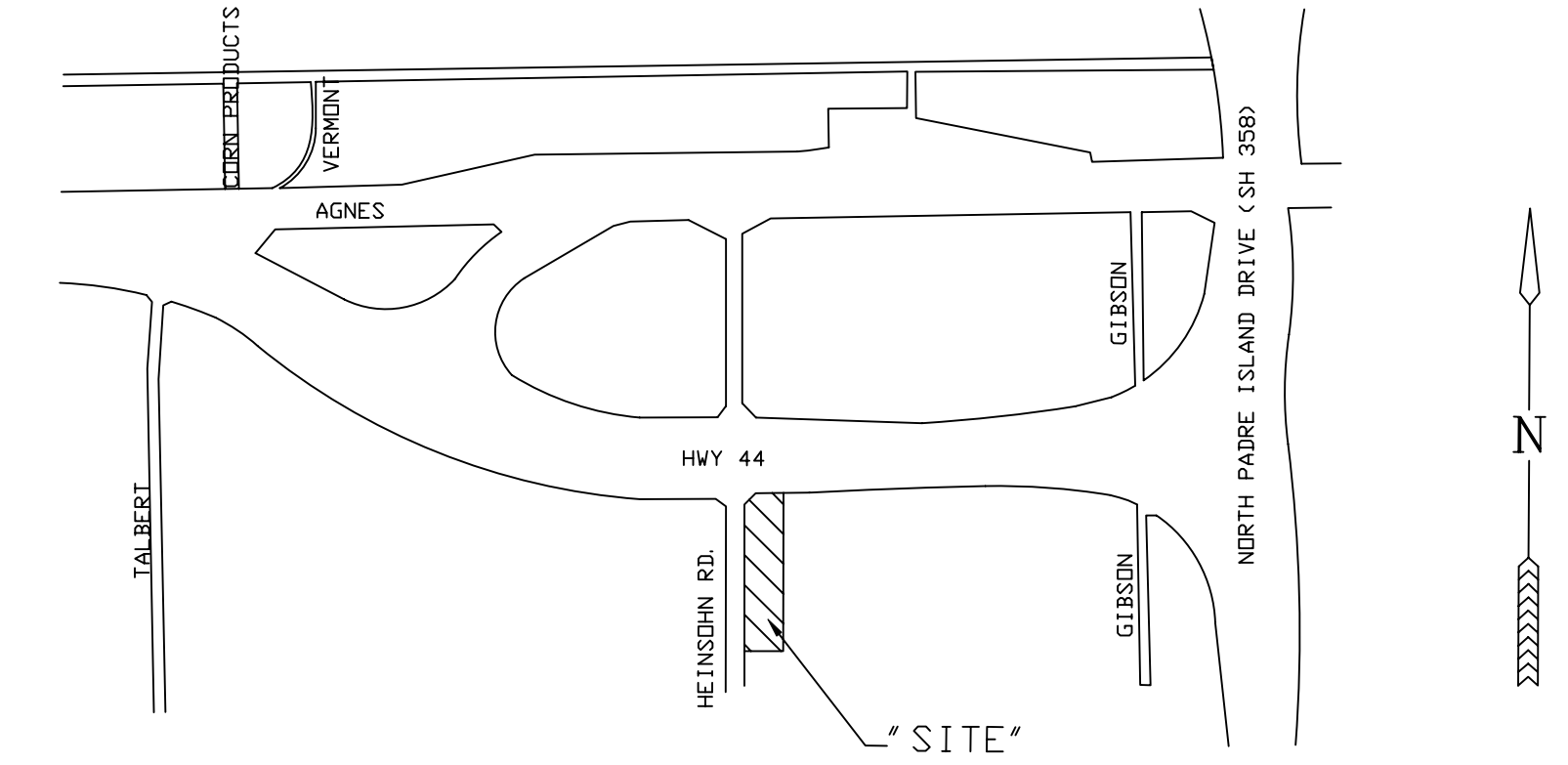
1. SET ENDS OF SERVICE LINES MID LOT FRONTAGE UNLESS SHOWN OTHERWISE.
2. ALL SANITARY SEWER STATIONING IS MEASURED ALONG THE CENTER LINE OF PROPOSED STREETS. ALL SANITARY SEWER MANHOLES SHALL BE FIBERGLASS, 48" MINIMUM DIAMETER UNLESS SHOWN OTHERWISE, 0.5" (MINIMUM) WALL AND CONSTRUCTED IN ACCORDANCE WITH CITY STANDARD SPECIFICATIONS.
3. ALL GRAVITY SEWER PIPES 8" THRU 18" SHALL BE PVC, SDR 26 AND SHALL BE BEDDED IN SAND WITH PI LESS THAN 10 TO 6" BELOW AND 6" TO SIDES OF PIPE (FULL HEIGHT OF PIPE), IN ACCORDANCE WITH CITY STANDARD SPECIFICATIONS. BED 4" AND SMALLER PIPES IN EARTH FROM THE EXCAVATION.

WATER NOTES

1. PROVIDE THRUST BLOCKS AT ALL 6" AND 8" WATER FITTINGS PURSUANT TO DETAILS AS SHOWN ON WATER DETAIL SHEETS.
2. PROVIDE CAST IRON BOXES AND PVC PIPE EXTENSIONS WITH CONCRETE AT GATE VALVES PURSUANT TO DETAILS AS SHOWN.
3. CONSTRUCT WATER RISERS AT END CAPS ON PIPES AND 2" BLOW-OFF VALVES FOR FILLING AND TESTING PURPOSES PURSUANT TO DETAILS AS SHOWN.
4. CONSTRUCT WATER SERVICE LINES AND CONNECTIONS PURSUANT TO THE NOTES AND DETAILS AS SHOWN.
5. ALL WATER MAINS SHALL BE DR18 PVC WITH DUCTILE IRON MECHANICAL JOINT FITTINGS AND SHALL BE BEDDED IN (ENCASED IN) SAND TO 6" ALL AROUND PIPE.
6. PROVIDE MINIMUM CLEARANCE BETWEEN WATER AND SANITARY SEWER LINES AND/OR MANHOLES AS REQUIRED BY THE TEXAS ADMINISTRATIVE CODE 317-3, APPENDIX "E", SEPARATION DISTANCE (AS REQUIRED BY TEXAS STATE WATER HYGIENE LAW).
7. ALL WATER SERVICE LINES SHALL BE 1" DIAMETER FOR SINGLE AND DOUBLE WATER SERVICES.
8. ALL PUBLIC WATER LINE CONSTRUCTION AND MATERIALS SHALL BE IN ACCORDANCE WITH REQUIREMENTS SET FORTH BY THE CITY OF CORPUS CHRISTI WATER DISTRIBUTION STANDARDS, DETAILS, AND PRACTICES. PVC PIPE AND FITTINGS FOR WATER LINES SHALL BE AWWA C-900, CLASS 150, WITH A DR OF 18. FIRE HYDRANTS WILL BE LOCKED ONTO VALVE BY USE OF RETAINER GLANDS ON DIP.

LEGEND

DC	DOWN GUY
EP	EDGE OF PAVEMENT
FL	FLOW LINE OR INVERT ELEVATION
⊖	FIRE HYDRANT (EXISTING)
◆	FIRE HYDRANT (PROPOSED)
G	GAS LINE
M.R.	MAP RECORDS
18" RCP	18" REINFORCED CONCRETE PIPE
PP	POWER POLE OR LIGHT POLE
R/W	RIGHT-OF-WAY LINE
8"SS	8" SANITARY SEWER LINE
S	SIGN
S=0.3%	LONGITUDINAL SLOPE
SSMH	SANITARY SEWER MANHOLE
TMKR	TELEPHONE MARKER
U.E.	UTILITY EASEMENT
8"W	8" WATER LINE
Y.R.	YARD REQUIREMENT



LOCATION MAP
1" = 1000'

CALL BEFORE YOU DIG!

811

THE LONE STAR NOTIFICATION COMPANY
AT 1-800-669-8344

SHEET INDEX

SHEET 1	COVER SHEET AND MISCELLANEOUS INFORMATION
SHEET 2	SANITARY SEWER AND WATER PLAN AND SANITARY SEWER PROFILE

GENERAL NOTES:

1. SUBSIDIARY WORK: IN THE COURSE OF FURNISHING OR CONSTRUCTING A COMPLETE WORK OR IMPROVEMENT, CERTAIN WORK MAY BE NECESSARY WHICH IS SUBSIDIARY TO THE ITEMS WHICH ARE ESTABLISHED AS PAY ITEMS. SOME SUCH SUBSIDIARY WORK MAY BE SHOWN AND SPECIFIED IN DETAIL IN THE PLANS AND SPECIFICATIONS, OTHER WORK MAY BE LESS COMPLETELY SHOWN, AND OTHER SUCH WORK WHICH IS ENTIRELY NECESSARY FOR THE SATISFACTORY COMPLETION OF THE WORK AS A WHOLE, MAY NOT BE NOTED ON THE PLANS OR IN THE SPECIFICATIONS. IT SHALL BE THE DUTY OF THE CONTRACTOR TO CARRY OUT ALL SUCH SUBSIDIARY WORK AS IF FULLY SHOWN, AND THE COST OF SUCH WORK SHALL BE MADE SUBSIDIARY TO THE ESTABLISHED PAY ITEM.
2. CONTRACTOR SHALL NOTIFY THE CITY OF CORPUS CHRISTI CONSTRUCTION INSPECTION DEPARTMENT (880-3555) AT LEAST 3 WORKING DAYS PRIOR TO BEGINNING ANY WORK ON PUBLIC IMPROVEMENTS. THE CITY WATER INSPECTOR MUST BE CONTACTED AT LEAST 48 HOURS BEFORE ANY WORK BEGINS ON PUBLIC WATER IMPROVEMENTS. CALL FRED PENA (826-1808) TO GET THE NAME AND NUMBER OF THE INSPECTOR WHO WILL BE ASSIGNED TO THIS PROJECT.
3. CONTRACTOR SHALL NOTIFY ALL APPROPRIATE UTILITY COMPANIES, INCLUDING TEXAS 811, 48 HOURS PRIOR TO ACTUAL CONSTRUCTION.
4. TRAFFIC CONTROL PLAN WILL BE REQUIRED FROM TRAFFIC ENGINEERING FOR ALL WORK IN PUBLIC ROW OR EASEMENT. ALL WORK AFFECTING TRUCK RIGHT OF WAY WILL REQUIRE TRUCK APPROVAL AND/OR PERMIT, AS APPLICABLE. ALL PERMITS MUST BE ISSUED BEFORE BEGINNING ANY WORK IN PUBLIC RIGHT OF WAY OR EASEMENT.
5. CONTRACTOR IS RESPONSIBLE FOR OBTAINING ALL APPLICABLE PERMITS AND/OR PAYING ANY APPLICABLE FEES. CONTRACTOR SHALL CONTACT CITY DEVELOPMENT SERVICES TO DETERMINE WHAT PERMITS AND FEES ARE REQUIRED.
6. CONTRACTOR SHALL PERFORM NO TRENCH EXCAVATIONS IN THE GROUND IN ANY PORTION OF THE PROJECT WITHOUT ALL EXISTING UNDERGROUND UTILITY LINES STAKED ON THE GROUND (TO IDENTIFY LOCATION) IN THE VICINITY OF CONTRACTOR'S TRENCHING OPERATIONS. CONTRACTOR SHALL CAUSE THE OWNERS OF UTILITY LINES TO STAKE THEIR UNDERGROUND LINES PRIOR TO ANY CONSTRUCTION.
7. CONTRACTOR SHALL PROVIDE OWNER A ONE YEAR GUARANTEE AND WARRANTY AGAINST ALL DEFECTS IN MATERIALS, WORKMANSHIP AND COMPACTION OF EARTH AND PAVING.



DEVELOPERS:
5961 HWY 44, LLC
5961 HWY 44,
CORPUS CHRISTI, TX 78406
361-438-5158

BENCHMARK (CITY DATUM, NGVD '29)

SEE FOLLOWING SHEET

Digitally signed by Renee
Couture
DN: cn=Renee Couture, c=US,
o=Development Services,
ou=City of Corpus Christi,
email=ReneeC@cctexas.com
'Date: 2013.04.29 16:48:12 -05'00

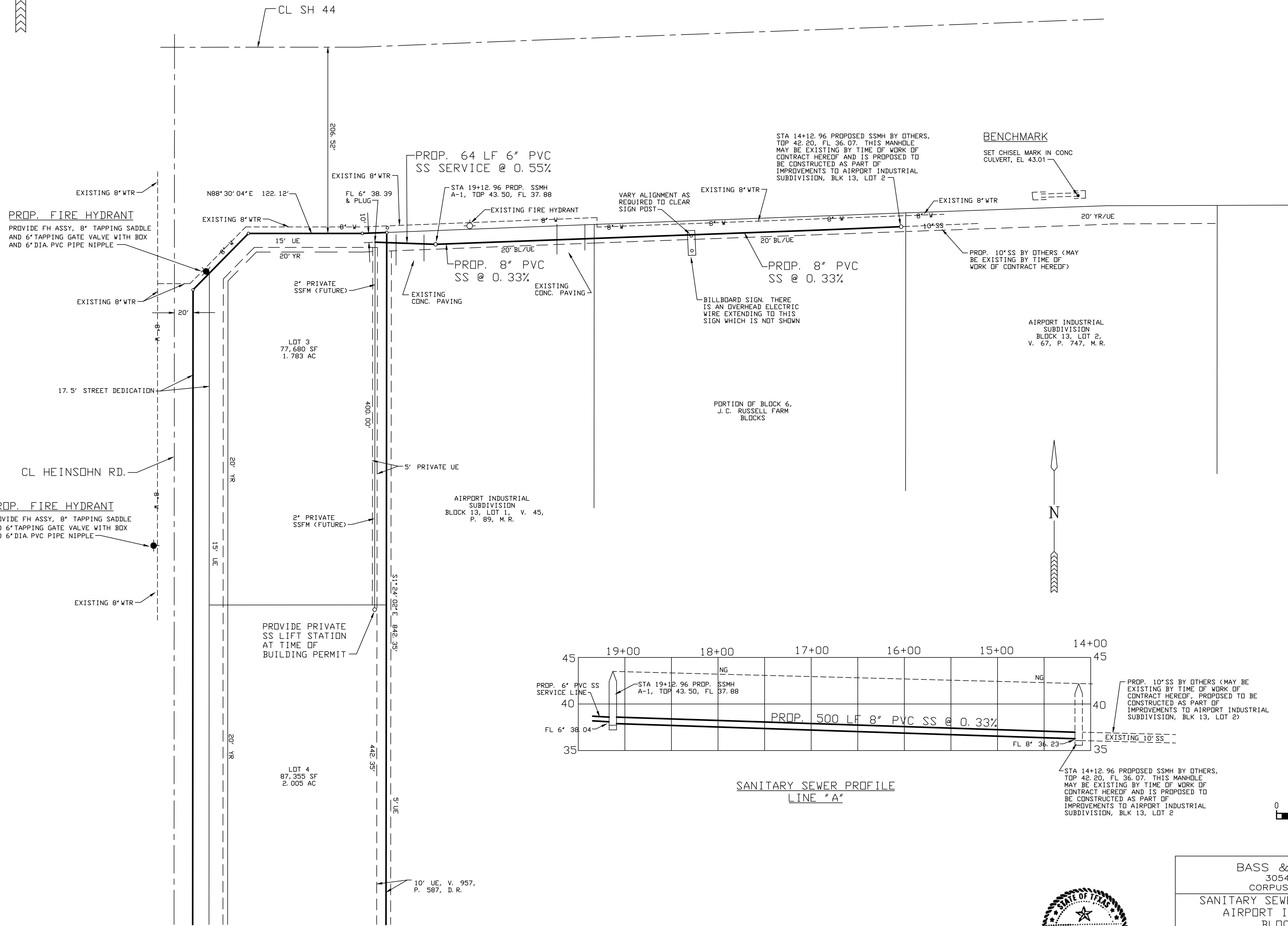
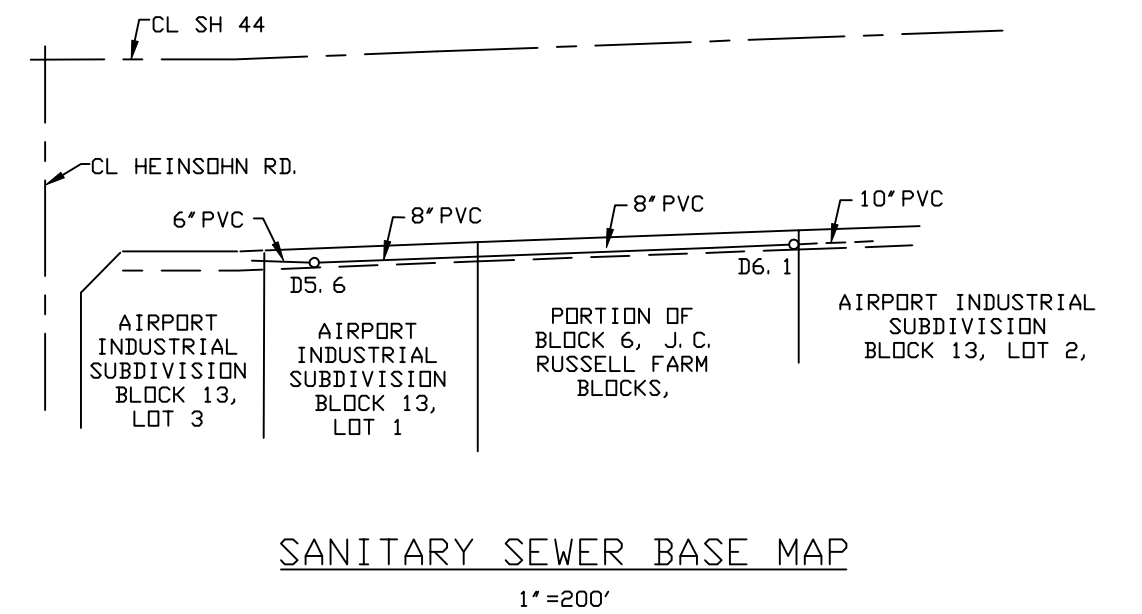
PLANS ARE RELEASED FOR CONSTRUCTION
CITY OF CORPUS CHRISTI
DEVELOPMENT SERVICES
Construction shall begin within 6 months and will be
completed within 1 year from date plans were released.

BASS AND WELSH ENGINEERING
TX REGISTRATION NO. F-52, 3054 S. ALAMEDA STREET
CORPUS CHRISTI, TEXAS 78404

IMPROVEMENTS TO
AIRPORT INDUSTRIAL SUBDIVISION, BLOCK 13,
LOTS 3 & 4, CORPUS CHRISTI, NUECES CO., TX

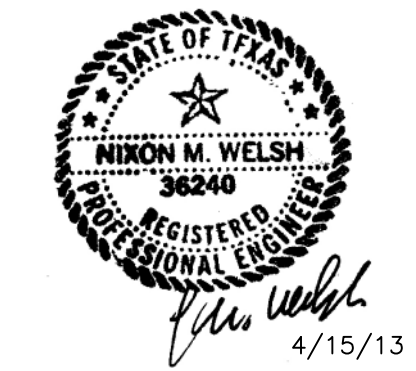
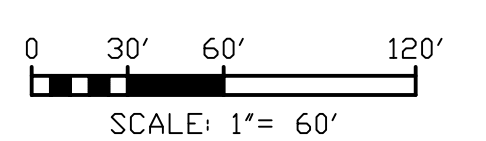
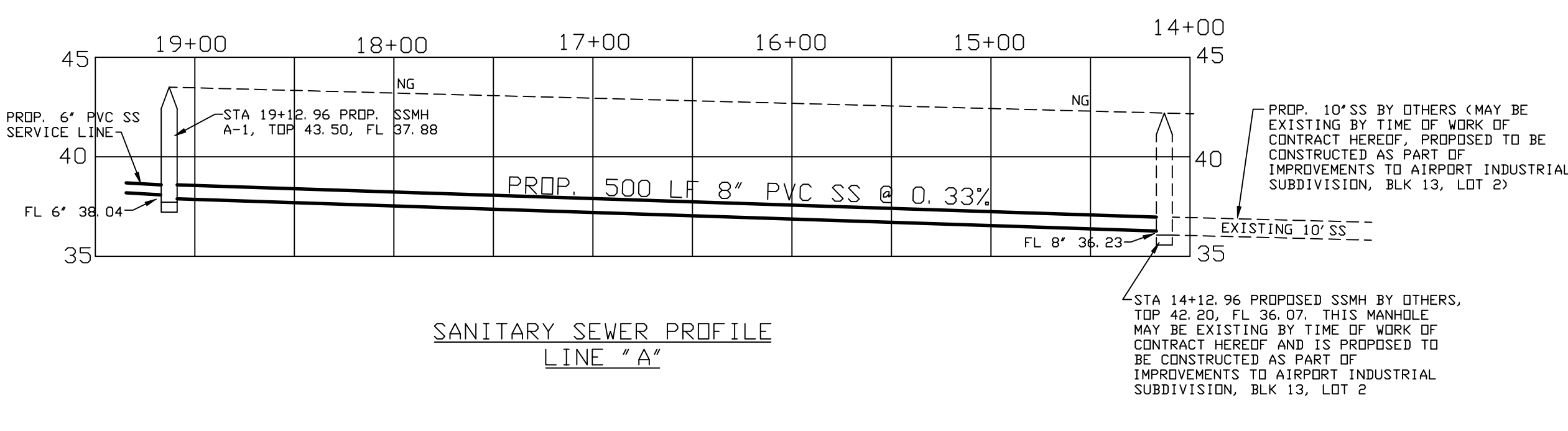
COVER SHEET AND MISCELLANEOUS INFORMATION

DWN.	_____	PLOT SCALE:	1" = 60'	COM. NO.	CS.DWG
CHK.	N. WELSH	SCALE (H):	AS SHOWN	JOB NO.	12050
		SCALE (V):	AS SHOWN	SHEET	1 OF 2
		DATE PLOTTED	04/15/13		



ESTIMATE SUMMARY

SANITARY SEWER		
1. 8" PVC PIPE	500	LF
2. MH	1	EA
3. PAVEMENT PATCHING	1	LS
4. 6" PVC SERVICE PIPE	64	LF
WATER		
1. FH ASSY	2	EA
2. 8" TAPPING SADDLE AND 6" TAPPING GATE VALVE AND BOX	2	EA
3. 6" PVC PIPE NIPPLE	2	EA
MISC		
1. TRENCH SAFETY FOR EXCAVATIONS	564	LF
2. TRAFFIC CONTROL DURING CONSTRUCTION	1	LS



Digitally signed by Renee Couture
 DN: cn=Renee Couture, c=US,
 o=Development Services, ou=City
 of Corpus Christi,
 email=ReneeC@cctexas.com
 Date: 2013.04.29 16:49:10 -0500

PLANS ARE RELEASED FOR CONSTRUCTION
 CITY OF CORPUS CHRISTI
 DEVELOPMENT SERVICES
Construction shall begin within 6 months and will be completed within 1 year from date plans were released.

BASS & WELSH ENGINEERING 3054 S. ALAMEDA STREET CORPUS CHRISTI, TEXAS 78404			
SANITARY SEWER AND WATER IMPROVEMENTS AIRPORT INDUSTRIAL SUBDIVISION, BLOCK 13, LOTS 3 & 4 CORPUS CHRISTI, NUECES CO., TX			
SANITARY SEWER AND WATER PLAN SANITARY SEWER PROFILE			
OWN. _____	PLOT SCALE: 1" = 60'	COM. NO. SSW-PLN	
CHK. N. WELSH	SCALE (H): SAME	JOB NO. 12050	
	SCALE (V): 1" = 60'	DATE PLOTTED 04/15/13	SHEET 2 OF 2

APPLICATION FOR WASTE WATER CREDIT

We, 5961 HWY 44, LLC, 5961 Hwy. 44, Corpus Christi, TX 78406, owners and developers of proposed AIRPORT INDUSTRIAL SUBDIVISION, BLOCK 13, LOTS 3 & 4, hereby apply for \$6,236.87 credit towards the waste water acreage fee for the collection line Extension in conjunction with said subdivision as provided for by City Ordinance No. 17092. \$40,487.25 is the construction cost, including 11% Engineering and Surveying, as shown by the cost supporting documents attached herewith.

By: _____
Title: Member
Date: May 14, 2013

THE STATE OF TEXAS §
COUNTY OF NUECES §

This instrument was acknowledged before me on May 14, 2013, by
John Durham (Name), Member (Title), of
5961 HWY 44, LLC, a Texas Limited Liability Company, on behalf of the said company.



Katrina Marie Williams
Notary Public in and for the State of Texas

APPLICATION FOR WASTE WATER REIMBURSEMENT

We, 5961 HWY 44, LLC, 5961 Hwy. 44, Corpus Christi, TX 78406, owners and developers of proposed AIRPORT INDUSTRIAL SUBDIVISION, BLOCK 13, LOTS 3 & 4, hereby request reimbursement of \$18,710.61 for the installation of the waste water collection line in conjunction with said lot, as provided for by City Ordinance No. 17092. \$40,487.25 is the construction cost, including 11% Engineering and Surveying, as shown by the cost supporting documents attached herewith.

By: [Signature]
Title: Member
Date: May 14, 2013

THE STATE OF TEXAS §
COUNTY OF NUECES §

This instrument was acknowledged before me on May 14, 2013, by John Durham (Name), Member (Title), of 5961 HWY 44, LLC, a Texas Limited Liability Company, on behalf of the said company.



[Signature]
Notary Public in and for Nueces County, Texas

CERTIFICATION

The information submitted with this application for reimbursement has been reviewed and determined to be correct. Reimbursement is subject to:

- (a) Sufficiency of funds in the Collection Line Trust Fund, and
- (b) Appropriation and approval by the City Council.

Development Services Engineer (Date)



City of Corpus Christi, Texas
 Department of Development Services
 P.O. Box 9277
 Corpus Christi, Texas 78469-9277
 (361) 826-3240
 Located at: 2406 Leopard Street
 (Corner of Leopard St. and Port Ave.)

DISCLOSURE OF INTERESTS

City of Corpus Christi Ordinance 17112, as amended, requires all persons or firms seeking to do business with the City to provide the following information. Every question must be answered. If the question is not applicable, answer with "NA".

NAME: 5961 Hwy 44, LLC
STREET: 5961 Hwy 44 **CITY:** Corpus Christi **ZIP:** 78406
FIRM is: Corporation Partnership Sole Owner Association Other Limited Liability
Company

DISCLOSURE QUESTIONS

If additional space is necessary, please use the reverse side of this page or attach separate sheet.

1. State the names of each "employee" of the City of Corpus Christi having an "ownership interest" constituting 3% or more of the ownership in the above named "firm".

Name	Job Title and City Department (if known)
<u>None</u>	<u>N/A</u>
<u>None</u>	<u>N/A</u>

2. State the names of each "official" of the City of Corpus Christi having an "ownership interest" constituting 3% or more of the ownership in the above named "firm".

Name	Title
<u>None</u>	<u>N/A</u>
<u>None</u>	<u>N/A</u>

3. State the names of each "board member" of the City of Corpus Christi having an "ownership interest" constituting 3% or more of the ownership in the above named "firm".

Name	Board, Commission, or Committee
<u>None</u>	<u>N/A</u>
<u>None</u>	<u>N/A</u>

4. State the names of each employee or officer of a "consultant" for the City of Corpus Christi who worked on any matter related to the subject of this contract and has an "ownership interest" constituting 3% or more of the ownership in the above named "firm".

Name	Consultant
<u>None</u>	<u>N/A</u>
<u>None</u>	<u>N/A</u>

CERTIFICATE

I certify that all information provided is true and correct as of the date of this statement, that I have not knowingly withheld disclosure of any information requested; and that supplemental statements will be promptly submitted to the City of Corpus Christi, Texas as changes occur.

Certifying Person: John Durband **Title:** Member
 (Print)

Signature of Certifying Person: [Signature] **Date:** May 14, 2013

DEFINITIONS

- a. "Board Member". A member of any board, commission or committee appointed by the City Council of the City of Corpus Christi, Texas.
- b. "Employee". Any person employed by the City of Corpus Christi, Texas, either on a full or part time basis, but not as an independent contractor.
- c. "Firm". Any entity operated for economic gain, whether professional, industrial or commercial and whether established to produce or deal with a product or service, including but not limited to, entities operated in the form of sole proprietorship, as self-employed person, partnership, corporation, joint stock company, joint venture, receivership or trust and entities which, for purposes of taxation, are treated as non-profit organizations.
- d. "Official". The Mayor, members of the City Council, City Manager, Deputy City Manager, Assistant City Managers, Department and Division Heads and Municipal Court Judges of the City of Corpus Christi, Texas.
- e. "Ownership Interest". Legal or equitable interest, whether actually or constructively held, in a firm, including when such interest is held through an agent, trust, estate or holding entity. "Constructively held" refers to holding or control established through voting trusts, proxies or special terms of venture or partnership agreements.
- f. "Consultant". Any person or firm, such as engineers and architects, hired by the City of Corpus Christi for the purpose of professional consultation and recommendation.