



Zoning Case #0115-03 MPM Development, LP

From: "R-22" Single-Family 22 District
To: "RS-15" Single-Family 15 District

Planning Commission
Presentation
January 14, 2015

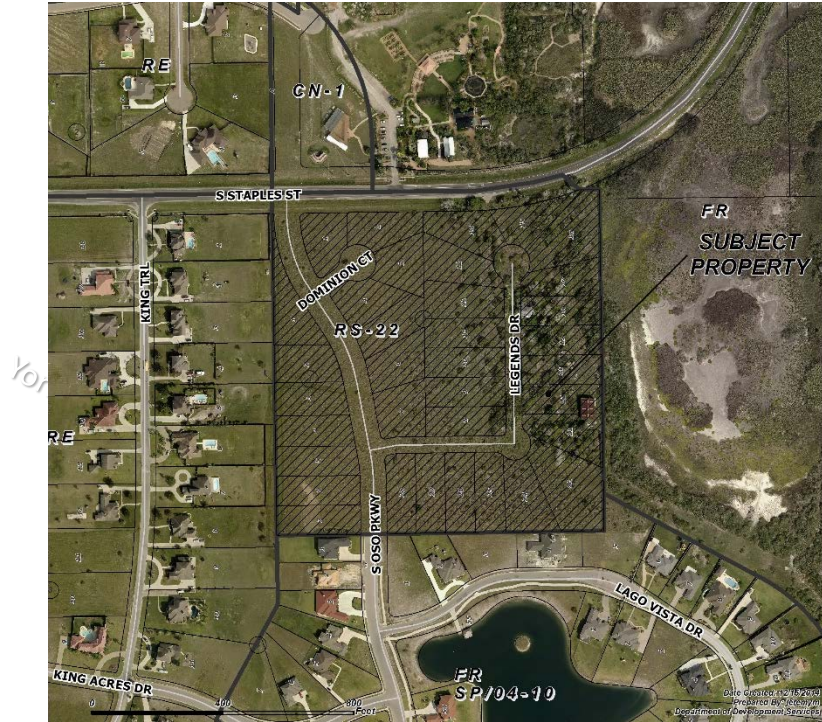


Aerial Overview



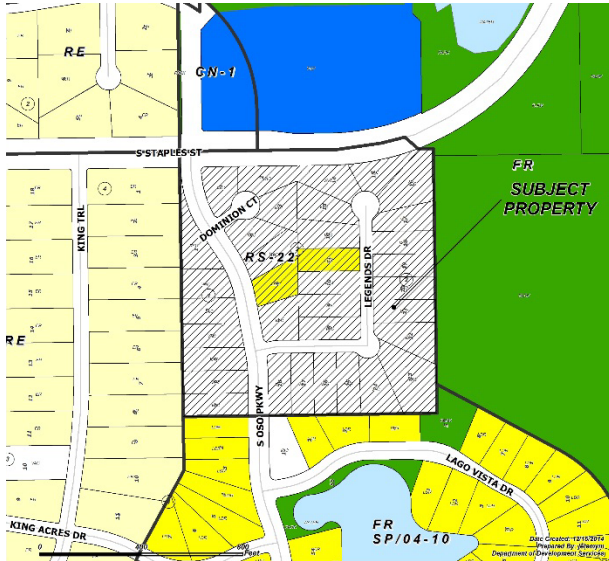


Aerial

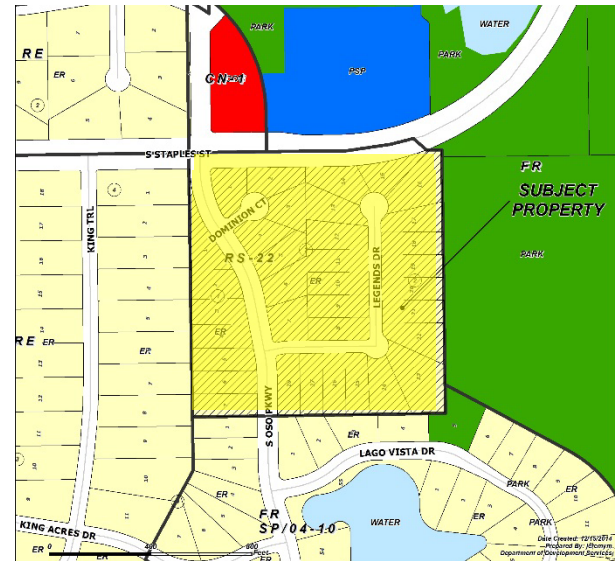






Existing Land Use





Future Land Use



 Commercial
 Vacant

 Low Density Residential
 Public/ Semi-Public

 Park Land
 Estate Residential



Site Photos

South Across S. Staples Street





Site Photos

Southwest Across S. Staples Street





Site Photos

Northeast from new Oso Parkway





Site Photos

Northwest from new Oso Parkway





Site Photos

West from new Oso Parkway





Public Notification

28 Notices mailed inside 200' buffer
2 Notices mailed outside 200' buffer

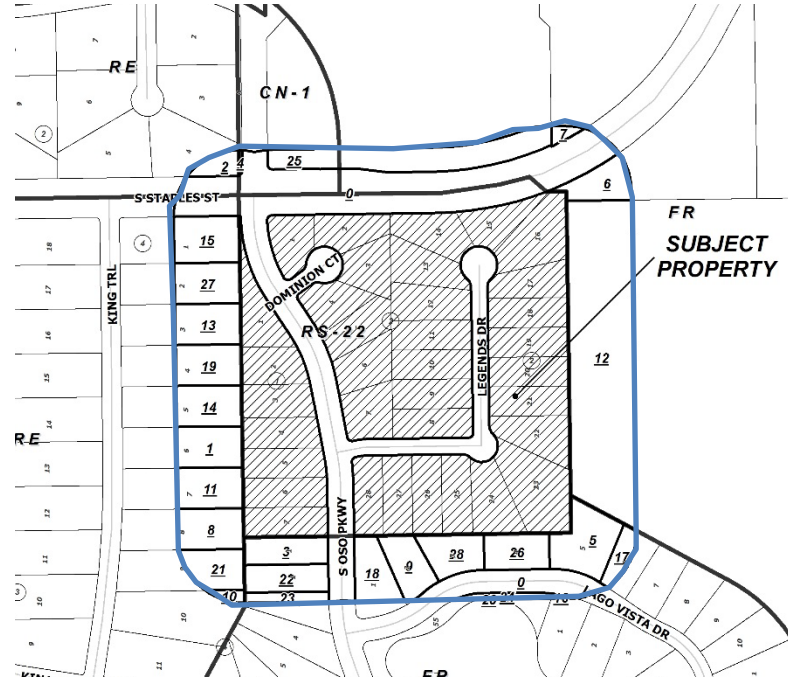
Notification Area



Opposed: 0



In Favor: 0





Staff Recommendation

Approval of the "RS-15" Single-Family 15 District