



Zoning Case #1215-03

Roque Enriquez

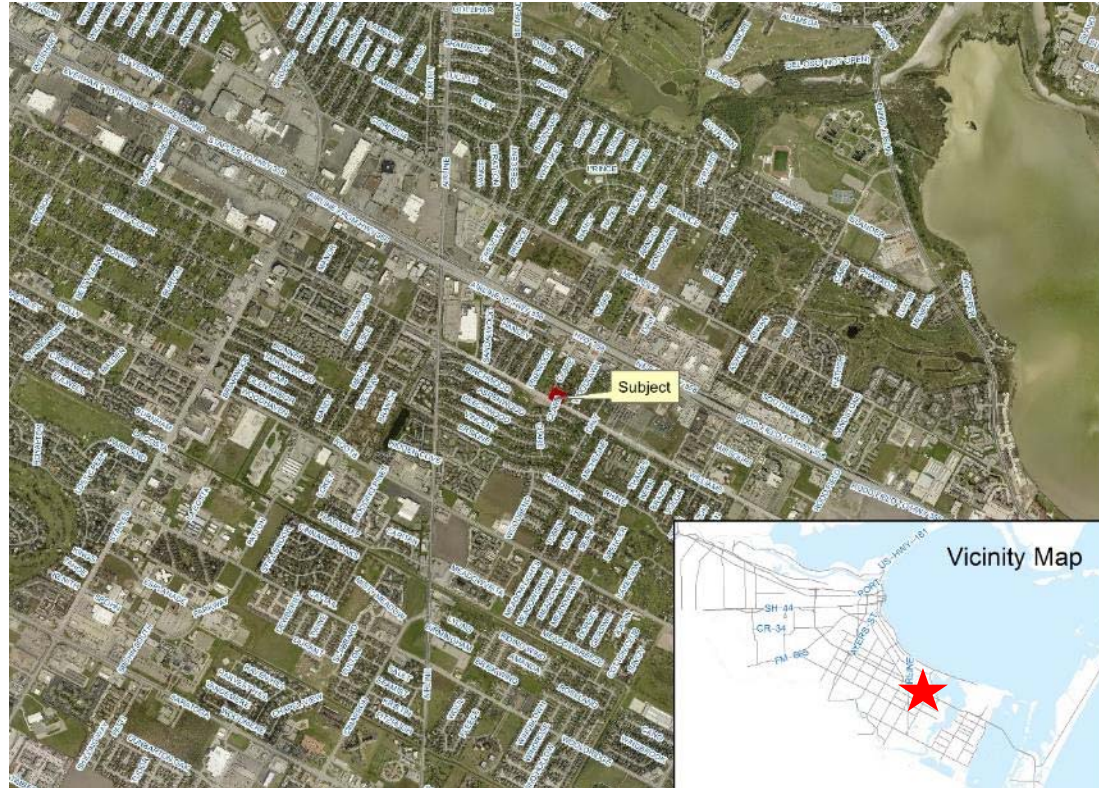
From: “RS-6” Single-Family 6 District

To: “RM-1” Multifamily 1 District

Planning Commission Presentation
December 16, 2015

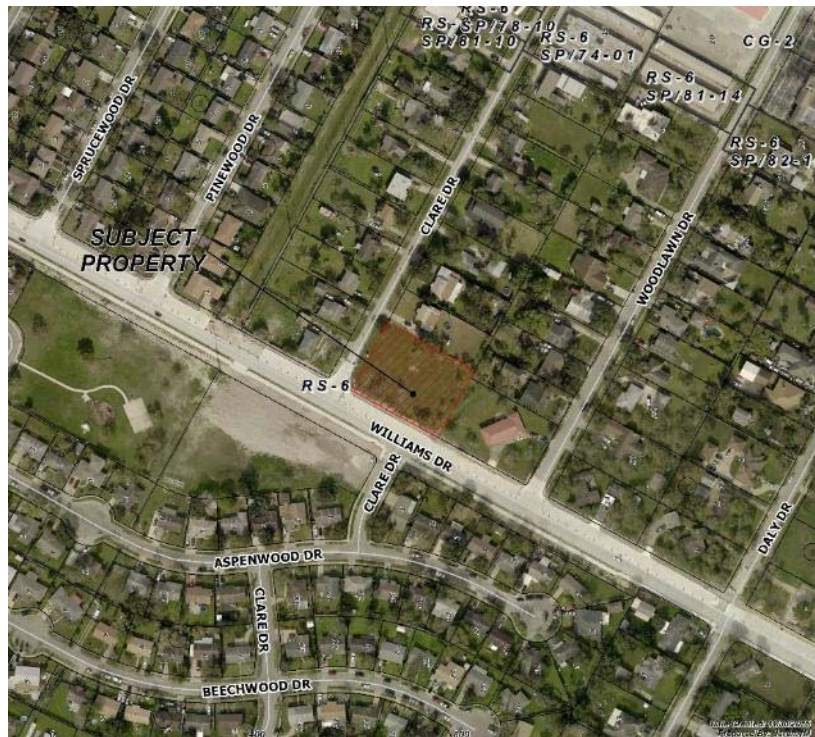


Aerial Overview





Aerial





Existing Land Use



Vacant
 Drainage Corridor
 Low Density Residential

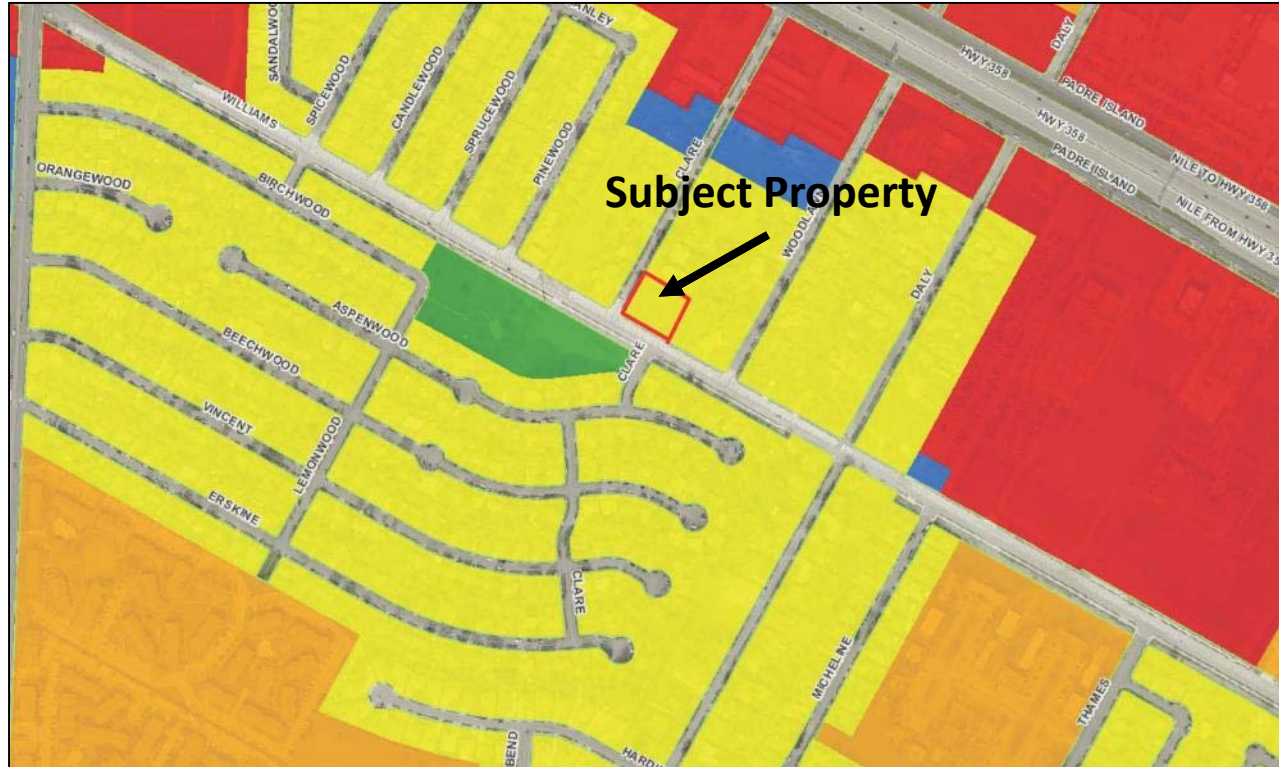
Future Land Use



Park
 Commercial
 Public/Semi-Public



Future Land Use Map





Subject Property – Northeast Corner of Williams Drive and Clare Drive





North on Clare Drive





West on Williams Drive





East on Williams Drive





Across Williams Drive from Subject Property





Public Notification

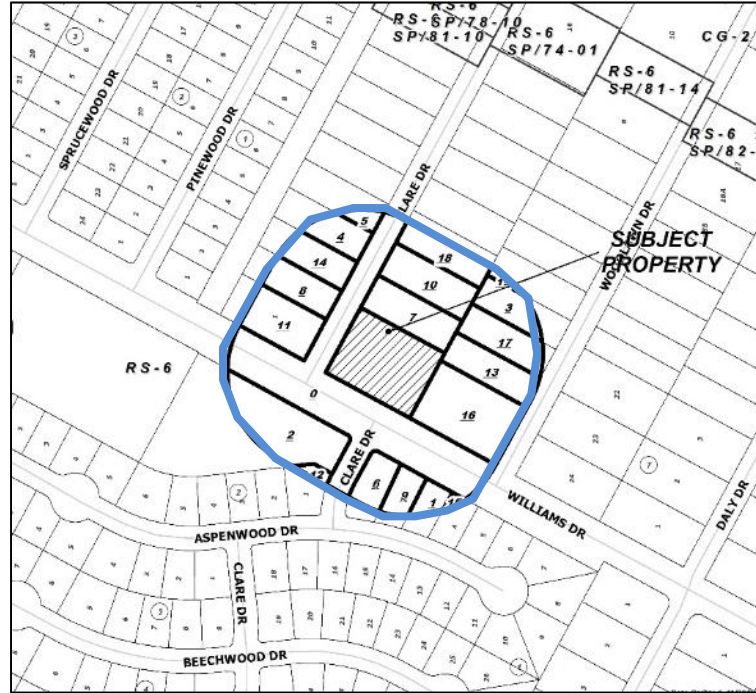
19 Notices mailed inside 200' buffer
4 Notices mailed outside 200' buffer

Notification Area

Opposed: 0 (0.00%)



In Favor: 0





Staff Recommendation

**Denial of the
“RM-1” Multifamily 1 District
and, in lieu thereof,
Approval of the “RS-TH”
Townhouse District**