

Calallen Pressure Plane Project

DRAFT

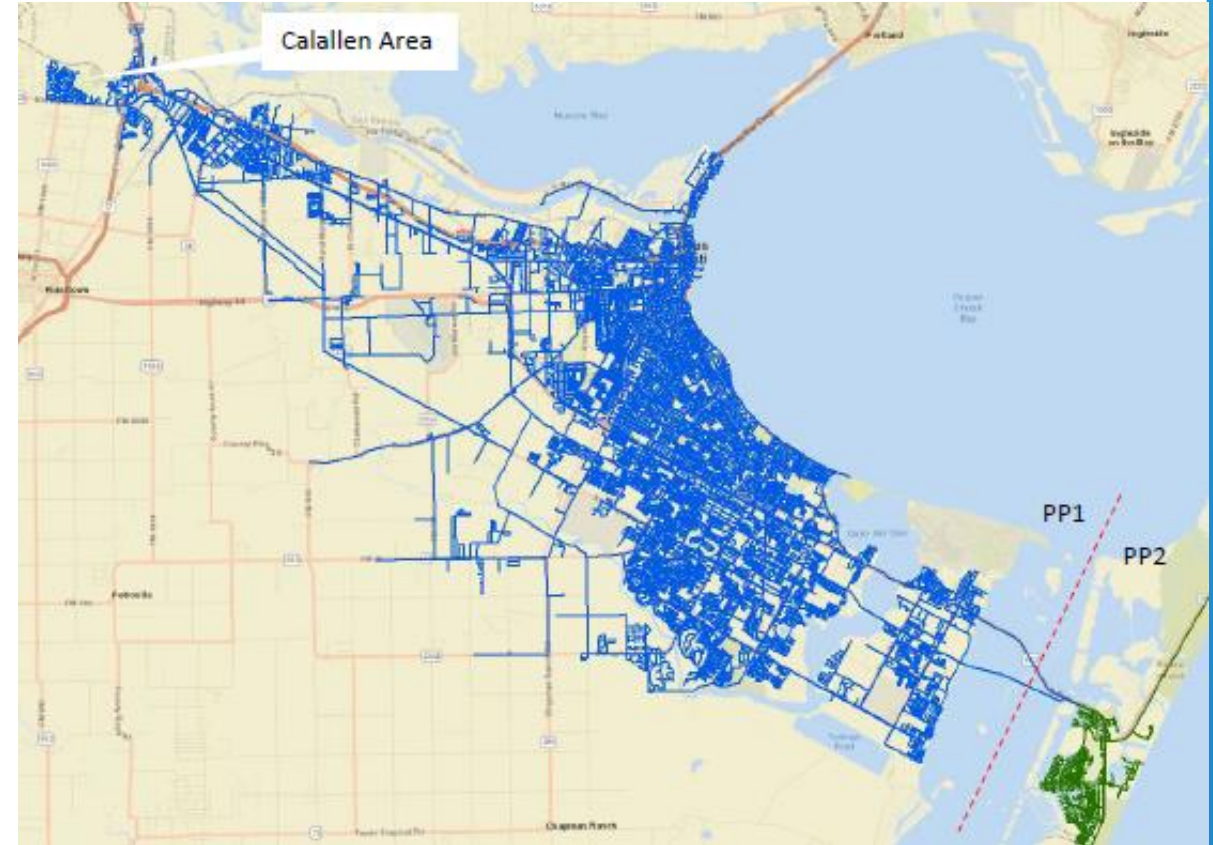
Nicholas Winkelmann, P.E.

Director of Water Systems and Support Services

November 19, 2024

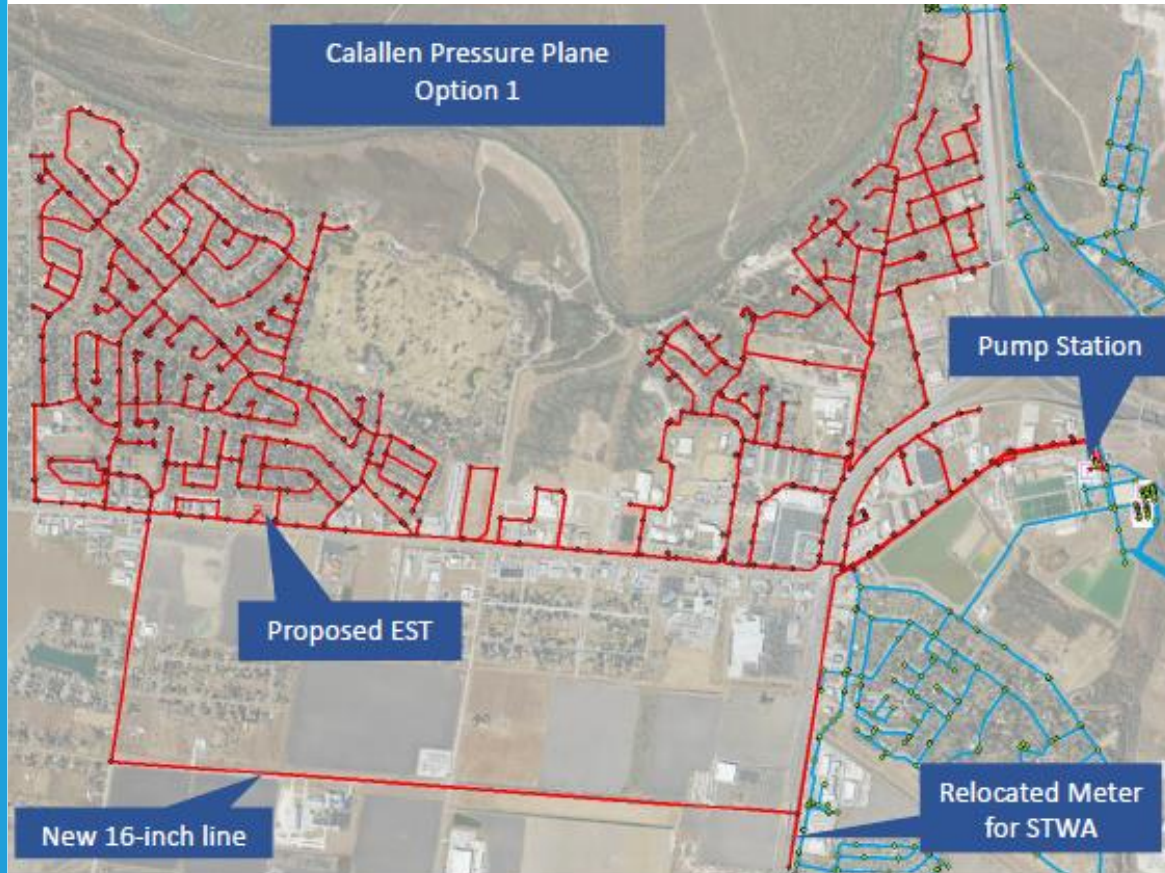
Pressure Planes

- **Pressure Plane 1 - all areas of the City on the mainland**
- **Pressure Plane 2 - all areas of the City on Padre Island**
- **Calallen area is in Pressure Plane 1 with the highest elevation and lowest water pressure**



This project will improve system pressure and provide a more resilient water system for the Calallen area

Location, Design and Components



- **Project design includes:**
 - Hydraulic modeling
 - Water line
 - Pump station
 - Elevated storage tank and ground storage tank
- **Project components include:**
 - Installation of a new twenty-four-inch (24") PVC water supply line from plant operations to a new pump station
 - Construction of a new pump station and ground storage tank located at the O.N. Stevens Water Treatment Plant
 - Twenty-four inch (24") PVC water line from the pump station to connection point at Leopard Street and Hearn Road
 - Extension of an existing sixteen-inch (16") PVC water line along Hwy 77
 - Construction of a new elevated storage tank

Competitive Solicitation and Funding

STV was selected in May 2024 with selection based on eight factors:

- Experience on projects of similar scope
- Demonstrated capability and capacity on comparable projects
- Past performance
- Team with experience and qualifications
- Team experience with work of similar scope
- Availability of resources
- Demonstrated understanding of scope of services
- Demonstrated understanding and experience with similar services with a public agency

- STV has designed hundreds of water projects across Texas and has successfully completed various City projects including:
 - Calallen pressure plane analysis
 - Holly and Rand Morgan elevated storage tank implementation
- STV is currently working on Navigation Pump Station improvements for the City



- Project cost - \$2,450,854.40 with FY 2025 funding available from the Water Capital Fund

Staff Recommendation

- Staff recommends approval of the professional services contract with STV, in the amount not to exceed \$2,450,854.40 for Pressure Plane - Calallen Area project to improve pressure and water system resiliency
- Design phase will begin in November 2024 with anticipated completion in February 2026
- Construction is anticipated to begin in June 2026 with anticipated completion by June 2028

2024-2026	2026			2026-2028
November - February	M	A	M	June - June
Design	Bid/Award			Construction

The top half of the slide features four horizontal, wavy bands of varying shades of blue, creating a sense of movement and depth. The colors range from a light cyan to a darker, more saturated blue.

Thank you!

The logo for Corpus Christi Water (CCW) features the letters 'CCW' in a bold, blue, sans-serif font. The letters are filled with a wavy, layered pattern of blue and cyan, matching the decorative elements at the top of the slide.

CCW Corpus Christi WaterSM
Serving the Coastal Bend