

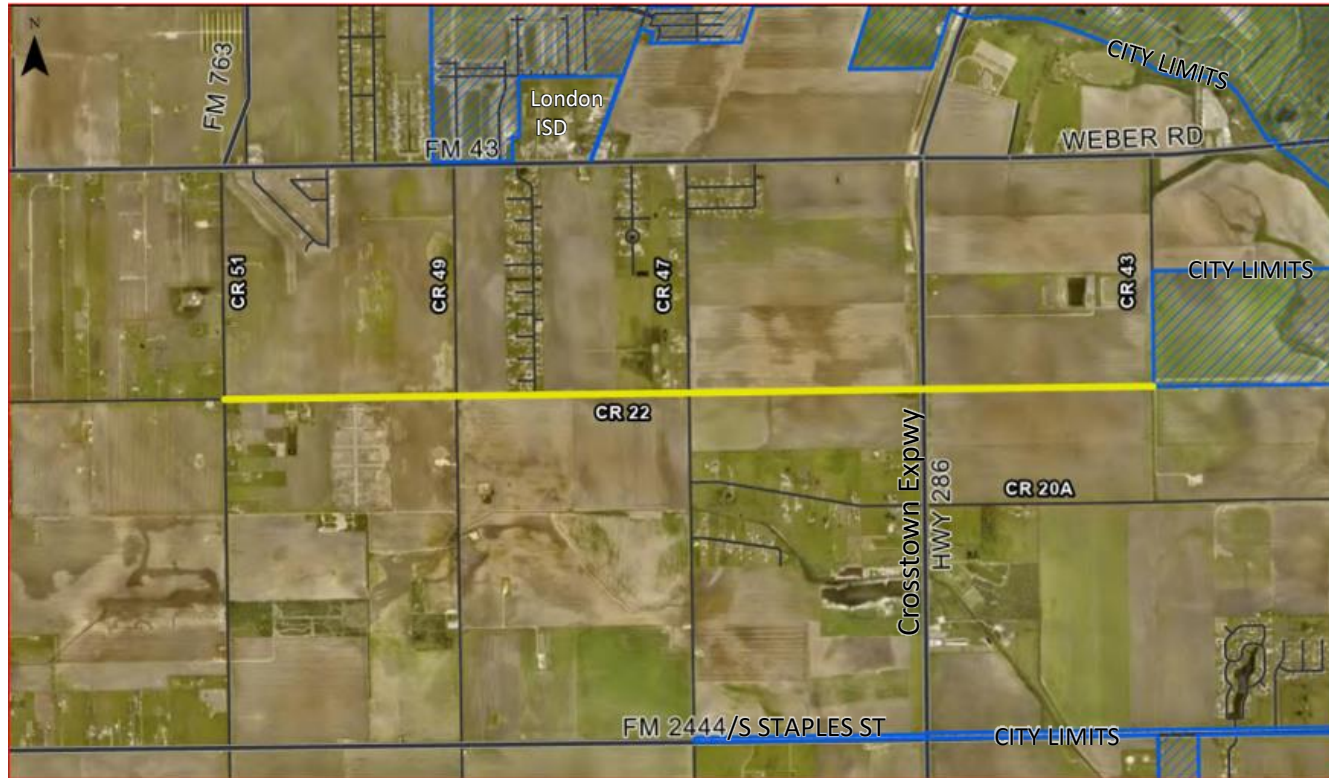


Resolution Directing Staff to Prepare a
Municipal Service Plan for the Annexation of a
Portion of County Road 22 (19.41 acres)

City Council Presentation
October 31, 2023



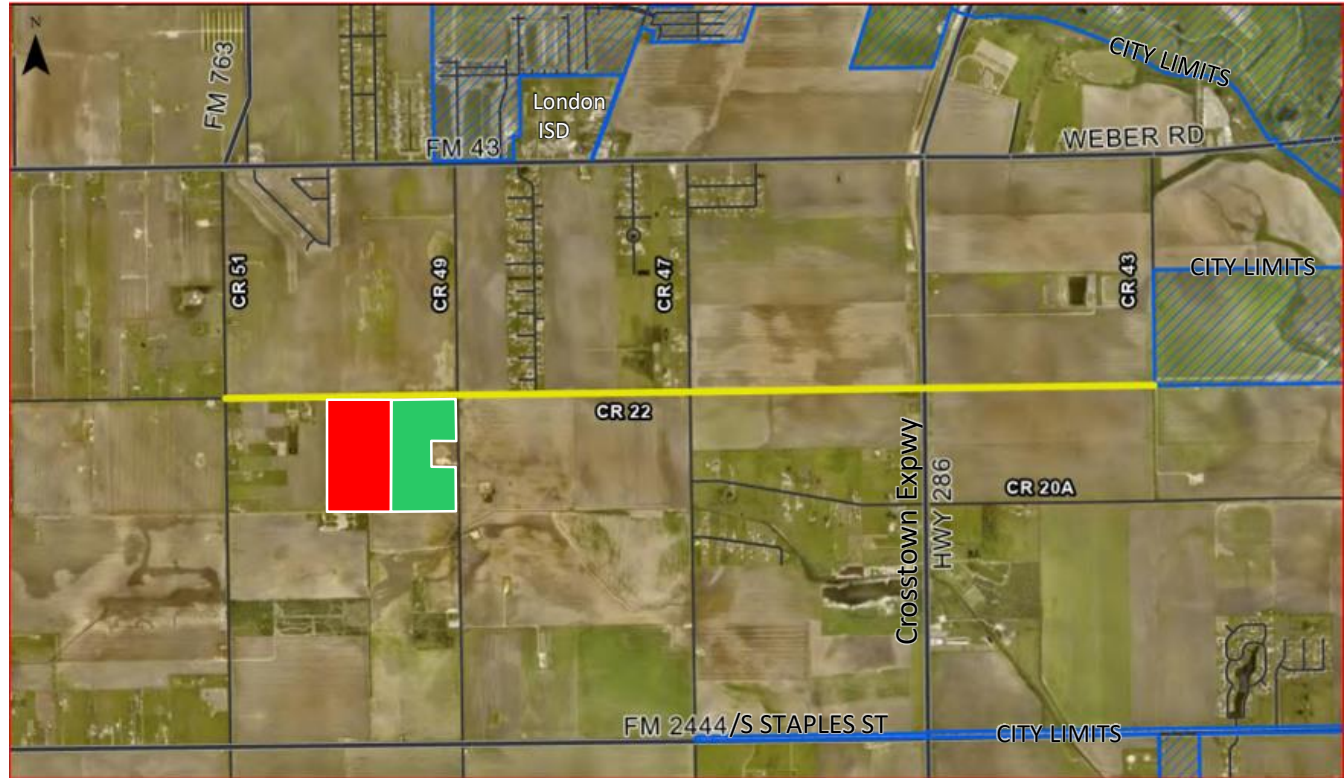
Vicinity Map for Section of CR 22





Adjacent Properties

The purpose of annexing a section of County Road 22 is to extend the City limit line to two properties located at the southwest corner of CR 22 and CR 49, which are owned by Superior H&H Development, LLC, and LM & JM Investments, LLC.





Proposed Annexation Schedule

- November 2023: Hold public hearings for the potential annexation of CR 22 right-of-way
- December 2023: Hold a public hearing for an Ordinance annexing CR 22 right-of-way and two adjacent subdivision properties
(Charlotte Estates and London Ranch Estates)



Background

- Texas Local Government Code section 43.1055 provides a process for a city to annex street right-of-way (ROW) upon the request of whoever owns/maintains the ROW.
- This resolution is the first step in the process of annexing a section of CR 22 from CR 51 to CR 43. Upon approval, staff will prepare a plan to provide municipal services for CR 22.
- No decision to annex CR 22 or any adjacent property is requested today.



Staff Recommendation

Approval of the resolution directing staff to prepare a service plan for CR 22 from CR 51 east to CR 43.