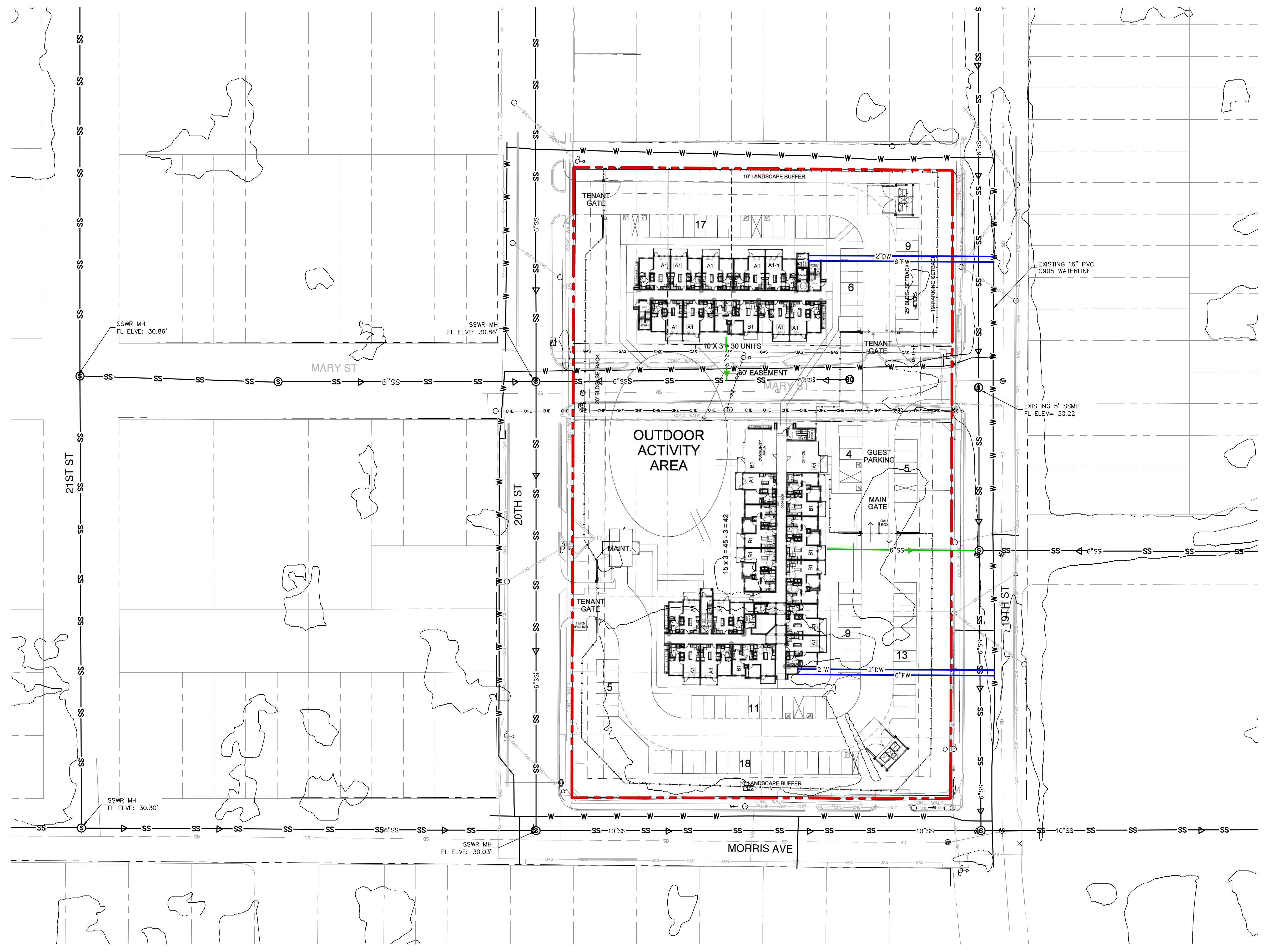


LEGEND

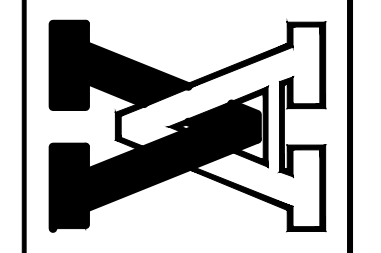
| | |
|--|-----------------------------------|
| | PROPERTY LINE |
| | PROPOSED SANITARY SEWER LINE |
| | PROPOSED FIRE WATER LINE |
| | PROPOSED DOMESTIC WATER LINE |
| | EXISTING SANITARY SEWER TO REMAIN |
| | EXISTING WATER LINE TO REMAIN |



REVISIONS

| NO. | DATE | DESC. |
|-----|------|-------|
| 1 | | |
| 2 | | |
| 3 | | |
| 4 | | |

VICKREY & ASSOCIATES, LLC.
CONSULTING ENGINEERS
 CIVIL • ENVIRONMENTAL • SURVEY
 12940 Country Parkway San Antonio, TX 78216
 Telephone: (210) 349-3271
 Firm Registration No: F-159



PRELIMINARY SITE PLAN
EXHIBIT
 2212 MORRIS AVE
 CORPUS CHRISTI, TEXAS

PROJ NO: 24-00038
 DATE: Feb-2024

THIS DOCUMENT IS RELEASED FOR INTERIM REVIEW PURPOSES ONLY UNDER THE AUTHORIZATION OF DAVID R. BABINEAU, P.E. #127335 ON 2/20/2024. THIS DOCUMENT IS NOT TO BE USED FOR CONSTRUCTION BIDDING, OR PERMIT PURPOSES.

| | |
|-------|----|
| SHEET | OF |
| 1 | 1 |

Feb 20, 2024 - 3:09pm
 R:\24-00038\Engineering\DWG\DWG\UTIL PLANS\440200_SSWR & WATER PLAN.dwg

DRAWN BY: MPC CHECKED BY: DB APPROVED BY: JT