

FINANCIAL REPORT



May 2026

PARKING OPERATIONS

MAY	2025	2026	Inc / Dec
Terminal / Covered	\$ 152,804	\$ 189,507	24%
Long Term	\$ 151,946	\$ 150,023	-1%
Commuter Tags & Commerical Lane	\$ 4,305	\$ 5,365	25%
TNC (Uber, Lyft, Turo)	\$ 5,071	\$ 6,214	23%
TOTAL GROSS RECEIPTS	\$ 314,126	\$ 351,109	12%

*TNC - does not include Turo

FOOD SERVICE CONCESSIONS

MAY	2025	2026	Inc / Dec
Food & Non-Alcohol Beverage	\$ 183,112	\$ 214,360	17%
Alcohol Beverage	\$ 63,430	\$ 69,064	9%
Catering	\$ -	\$ -	n/a
Retail (Amazon/Gift Shop)	\$ 37,619	\$ 44,836	19%
TOTAL GROSS SALES	\$ 284,161	\$ 328,260	16%

Gift Shop	\$ 118,688.08	36%
Island Joe's	\$ 78,518.56	24%
Gulf Coast Grill	\$ 81,930.92	25%
Nueces Bar	\$ 41,889.56	13%
Grill Express	\$ 4,975.41	2%
Amazon Store	\$ 2,257.72	1%

RENTAL CARS

MAY	2025	2026	Inc / Dec
Gross Sales Percentage	\$ 167,387	\$ 180,657	8%
CFC - Customer Facility Fees	\$ 129,767	\$ 126,324	-3%
Security Fees	\$ 11,797	\$ 11,484	-3%
TOTAL GROSS RECEIPTS	\$ 308,951	\$ 318,465	3%

TRANSACTION DAYS	23,594	22,968	-3%
-------------------------	---------------	---------------	------------

LANDING FEES

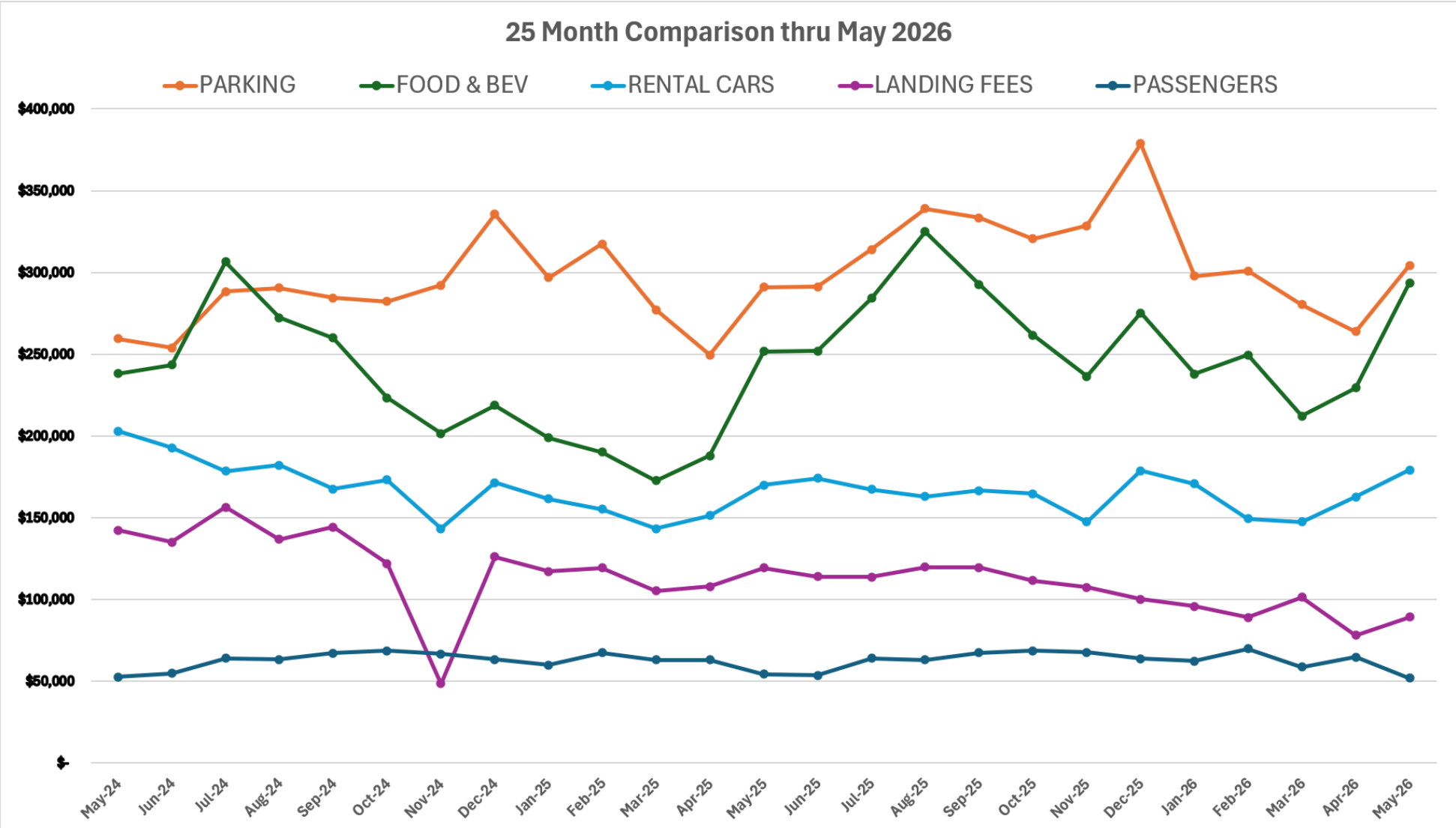
MAY	2025	2026	Inc / Dec
Signatory - AA UA SW	\$ 97,611	\$ 81,629	-16%
Non-Signatory	\$ 1,855	\$ 1,457	-21%
General Aviation	\$ 12,997	\$ 8,573	-34%
Cargo	\$ 1,327	\$ 1,681	27%
TOTAL FEES	\$ 113,790	\$ 93,340	-18%

2024 - \$2.87

2025 - \$2.54

2026 - \$1.99

Total Decrease = 31%



1 Year Comparison		
Compare to 2025	Amt Chg	%
Parking	\$ 30,769	10%
F&B	\$ 44,098	16%
Rental Cars	\$ 13,270	8%
Landing Fees	\$ 20,450	-18%

2 Year Comparison		
Compare to 2026	Amt Chg	%
Parking	\$ 56,639	20%
F&B	\$ 21,763	7%
Rental Cars	\$ 2,241	1%
Landing Fees	\$ (62,994)	-40%

AIRPORT FINANCIALS				
Period Ending: 5/31/2026 (Q3)	ANNUAL BUDGET	ACTUALS	BUDGET REMAINING	67%
REVENUE				
Airlines	\$ 3,802,625	\$ 2,552,826	\$ 1,249,799	67%
F&B Concessions	\$ 488,287	\$ 262,909	\$ 225,378	54%
Rental Cars	\$ 1,876,178	\$ 1,313,863	\$ 562,315	70%
Parking	\$ 3,704,769	\$ 2,338,485	\$ 1,366,284	63%
Rent	\$ 2,179,968	\$ 1,564,508	\$ 615,460	72%
Other	\$ 904,139	\$ 836,347	\$ 67,792	93%
TOTAL	\$ 12,955,966	\$ 8,868,938	4,087,028	68%

OTHER REVENUE:

Fuel Flowage Fees
 Resale Electric
 Tenant Maintenance Services
 Agricultural Leases
 Advertising Space Concession
 Airport Badging Fees
 Gas & Oil Sales
 Interest on Investments
 Oil & Gas Leases
 Sale of Scrap Metal
 Vending Machine Sales

OPERATING EXPENSE				
		Actual w Encumb		
Administration	\$ 2,991,090	\$ 1,749,614	\$ 1,241,475	58%
Custodial & Maintenance	\$ 643,094	\$ 397,924	\$ 245,170	62%
Development & Construction	\$ 1,941,883	\$ 722,174	\$ 1,219,709	37%
Facilities	\$ 2,316,607	\$ 1,130,307	\$ 1,186,300	49%
Airport IT	\$ 1,042,805	\$ 409,317	\$ 633,488	39%
Operations	\$ 528,119	\$ 308,243	\$ 219,876	58%
Parking/Transportation	\$ 1,615,552	\$ 913,505	\$ 702,047	57%
Public Safety	\$ 2,364,534	\$ 1,608,979	\$ 755,555	68%
Terminal Grounds/Airfield	\$ 668,351	\$ 420,834	\$ 247,517	63%
TOTAL	\$ 14,112,035	\$ 7,660,897	\$ 6,451,138	54%
TRANSFER GENERAL FUND	\$ 477,348	\$ 318,232	\$ 159,116	67%
TRANSFER FOR CIP	\$ 934,316	\$ 934,316	\$ -	100%
DEBT SERVICE	\$ 324,144	\$ 216,096	\$ 108,048	67%
TOTAL	\$ 1,735,808	\$ 1,468,644	\$ 267,164	85%
NET INCOME		\$ (260,603)	includes Actuals, Encumbrances & Local \$ Share match for CIP (grants)	