



# La Volla Creek Drainage Improvements Project



Council Presentation  
June 25, 2024



# Background

---



Engineering Services

- Areas around La Volla Creek have historically experienced flooding. The worst recent flooding event occurred in 2010 severely impacting the Las Colonias neighborhood.
  - New FEMA Flood Insurance Rate Maps (FIRM) have become effective.
  - The new FIRM maps place significant parts of La Molina, Los Encinos and Las Colonias into the 100-year floodplain.
  - The City sought and received grants to help mitigate flooding risk on Airport Ditch and La Volla Creek as well as making improvements that will permit the City to request a FIRM map revision.
-



# Grants



Engineering Services

---

Understanding the vulnerability to flooding on La Volla Creek, the City sought and received two grants to support La Volla Creek drainage improvements program:

1. Community Development Block Grant - Disaster Recovery (CDBG-DR) administered by the Texas General Land Office (GLO).
  2. FEMA Hazard Mitigation Grant Program (HMGP) administered by Texas Department of Emergency Management (TDEM),
  3. Phase I project is funded by the CDBG-DR grant. Phase II is funded with the FEMA Hazard Mitigation Grant.
-



# La Volla Creek Drainage Improvements Project

---



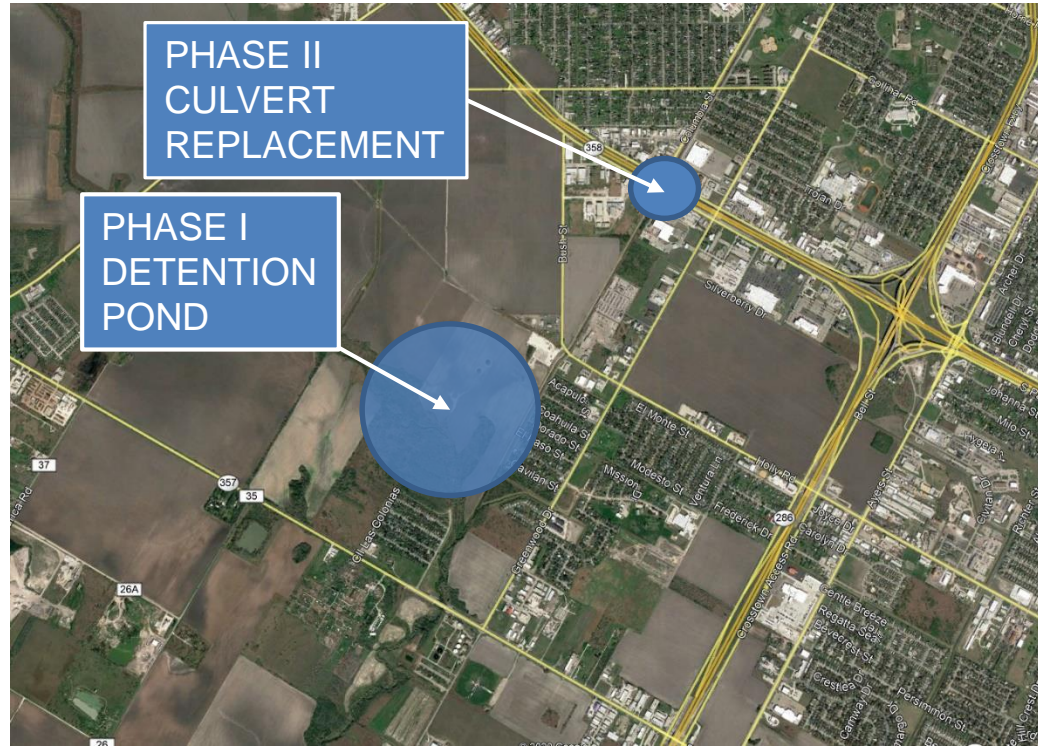
- This motion awards a construction contract to Mor-Wil, LLC. of Mission, Texas in the amount of \$19,279,571.99.
  - The scope of work includes building a 130-acre stormwater detention pond, inlet and outlet structures, wooden shelters/kiosks, wooden benches, landscaping, pedestrian trail signage, gravel parking lot, and ADA compliant HMAC parking, gravel pedestrian trail from parking lot to pond, shared gravel maintenance road and pedestrian trail on top of pond berm.
-



# Project Location



Engineering Services





# Project Location







# Benefitted Areas







# La Volla Creek Detention Project Timeline



2021 - 2023		2023 - 2024		2024 - 2025	
January - August		September - June		July - December	
Design		Bid		Construction	



Engineering Services

---

# Questions?