



Zoning Case #0414-01 Klatt Thomas, LLC

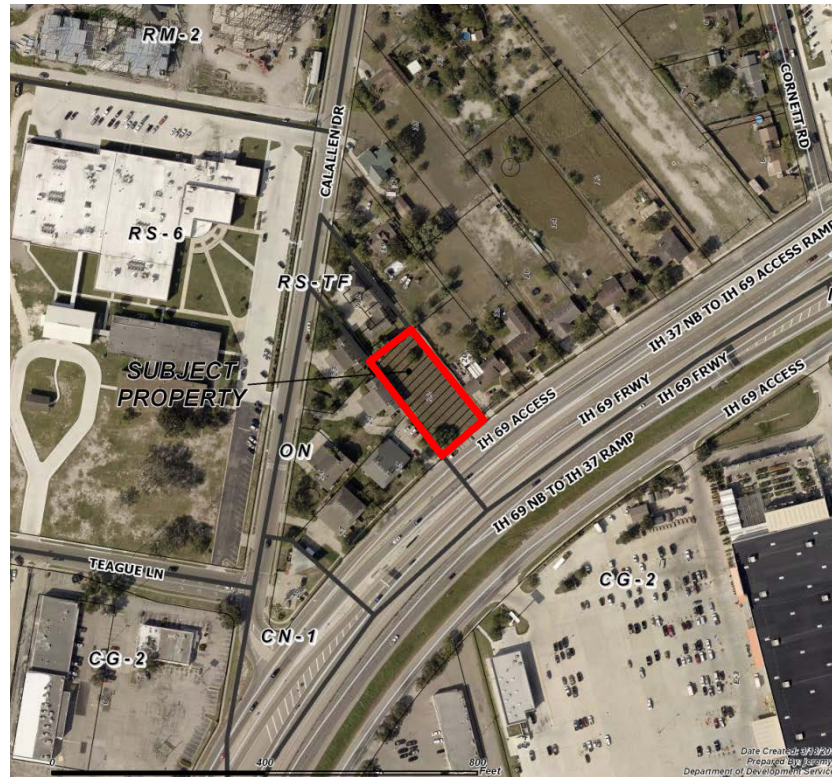
From: "RS-6" Single-Family 6 District
To: "ON" Office District



Planning Commission
Presentation
April 9, 2014

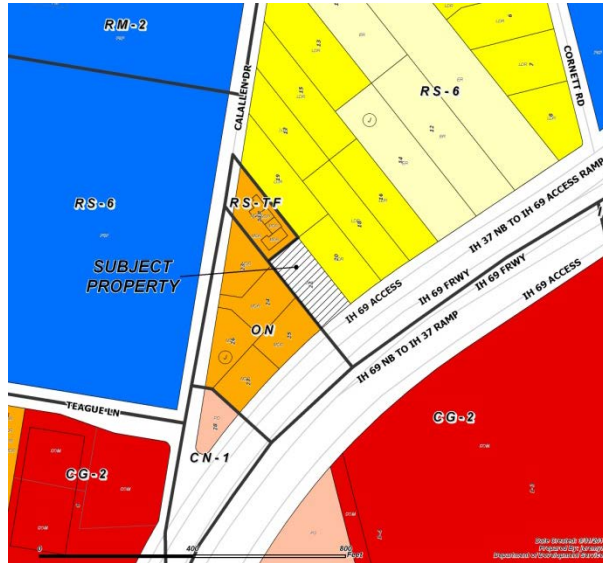


Aerial

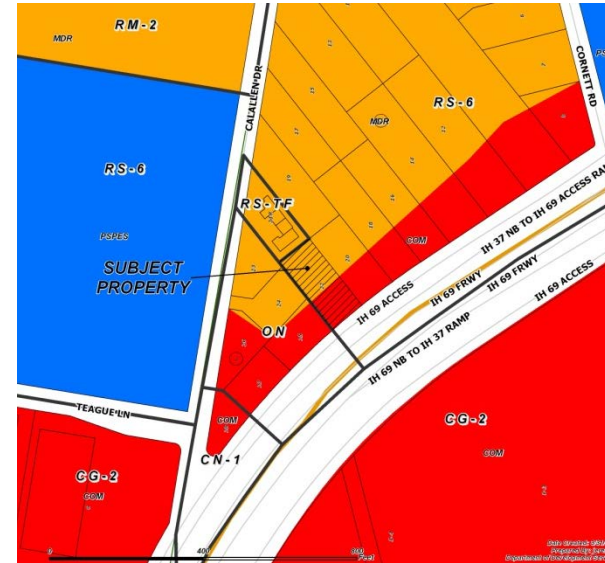




Existing Land Use

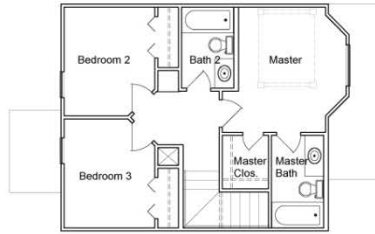


Future Land Use

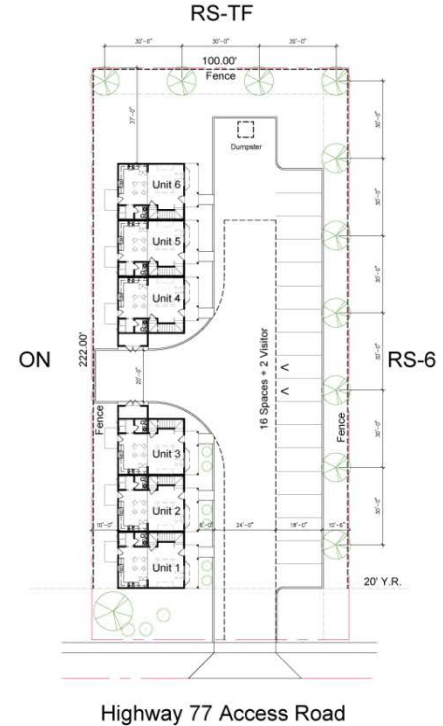
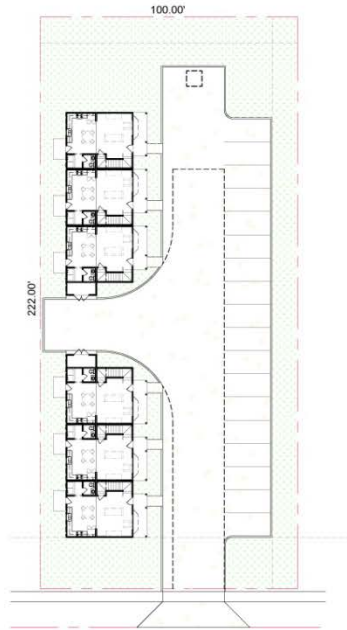




Site Plan



 **SECOND FLOOR PLAN** Square Footage: 548
SCALE: 1/4" = 1'-0"





Pictures



East along Compton Road



West along Compton Road





Pictures



Subject Property





Public Notification



16 Notices mailed inside 200' buffer
3 Notice mailed outside 200' buffer

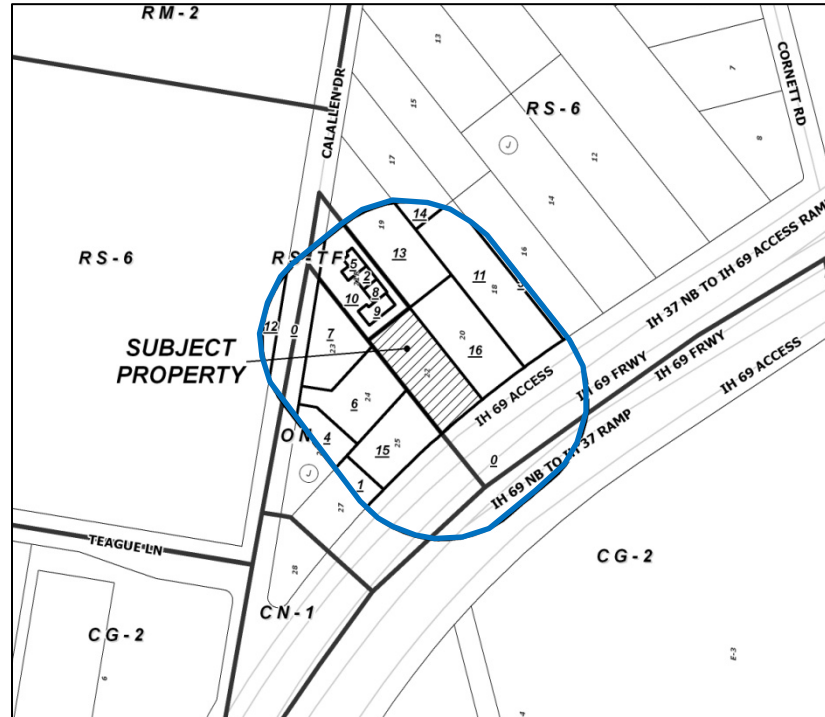
Notification Area



Opposed:



In Favor:





Staff Recommendation



Approval of the “ON” Office District