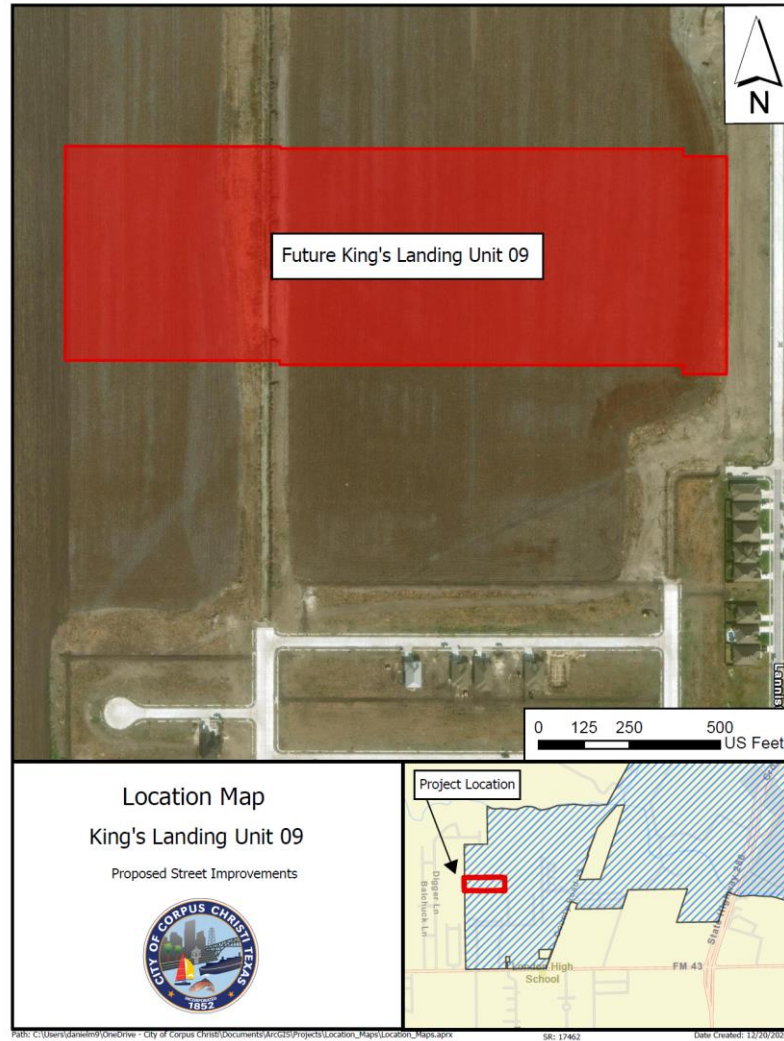


Participation Agreement for Street Infrastructure Improvements

Ordinance authorizing a Participation Agreement (“Agreement”) with MPM Development, LP (“Developer”) for the City’s share of the cost for the oversizing of the PCCP/RCCP street infrastructure improvements on Lady Alexa and Natasha not to exceed \$415,460.61 for the development known as King’s Landing Unit 9, located north of Lady Alexa Dr and west of London Pirate Road (District 3).

City Council
October 22, 2024

Location Map



Path: C:\Users\dawson9\OneDrive - City of Corpus Christi\Documents\Projects\Location_Maps\Location_Maps.aprx SR: 17462 Date Created: 12/20/2024

Total Cost Estimate

LADY ALEXA DR.

COST OF 50' BB ASPHALT STREET (C3)					
ITEM	DESCRIPTION	QUANTITY	UNIT	COST	TOTAL
1	8" PCCP/RRCP TO LIP OF GUTTER	3283	SY	90.00	295,471.20
2	12" LIME STABILIZED SUBGRADE TO 2' BC	3549	SY	42.00	149,038.73
3	12" PORTLAND CEMENT STABILIZED SUBGRADE TO 2' BC	3549	SY	30.00	106,456.23
4	EXCAVATION TO 2' BC	3549	SY	3.00	10,645.62
					\$561,611.78

COST OF 28' BB STREET					
ITEM	DESCRIPTION	QUANTITY	UNIT	COST	TOTAL
1	7" PCCP/RRCP TO LIP OF GUTTER	1765	SY	69.00	121,756.56
2	8" LIME STABILIZED SUBGRADE TO 2' BC	2027	SY	26.00	52,697.09
3	8" PORTLAND CEMENT STABILIZED SUBGRADE TO 2' BC	2027	SY	20.00	40,536.22
4	EXCAVATION TO 2' BC	2027	SY	3.00	6,080.43
					\$221,070.30

CITY PORTION EQUALS DIFFERENCE IN CONSTRUCTION COST \$340,541.48

13% ENGINEERING, SURVEYING, & TESTING \$44,270.39

7% CONTINGENCY \$23,837.90

2% BOND \$6,810.83

TOTAL AMOUNT REIMBURSABLE \$415,460.61

Recommendation

Approval

Staff recommends approval of the developer participation agreement with MPM Development, LP to reimburse the developer up to \$415,460.61 for the City's share of the cost to construct the street infrastructure improvements

The request is in accordance with UDC Section 8.4 City Participation in Streets and Drainage Cross Sections.