

Alvest Equipment Services, LLC Lease Agreement

Ordinance Authorizing Lease of Storage Space in Terminal

**Corpus Christi International Airport
Director – Richard McCurley**



June 23, 2026

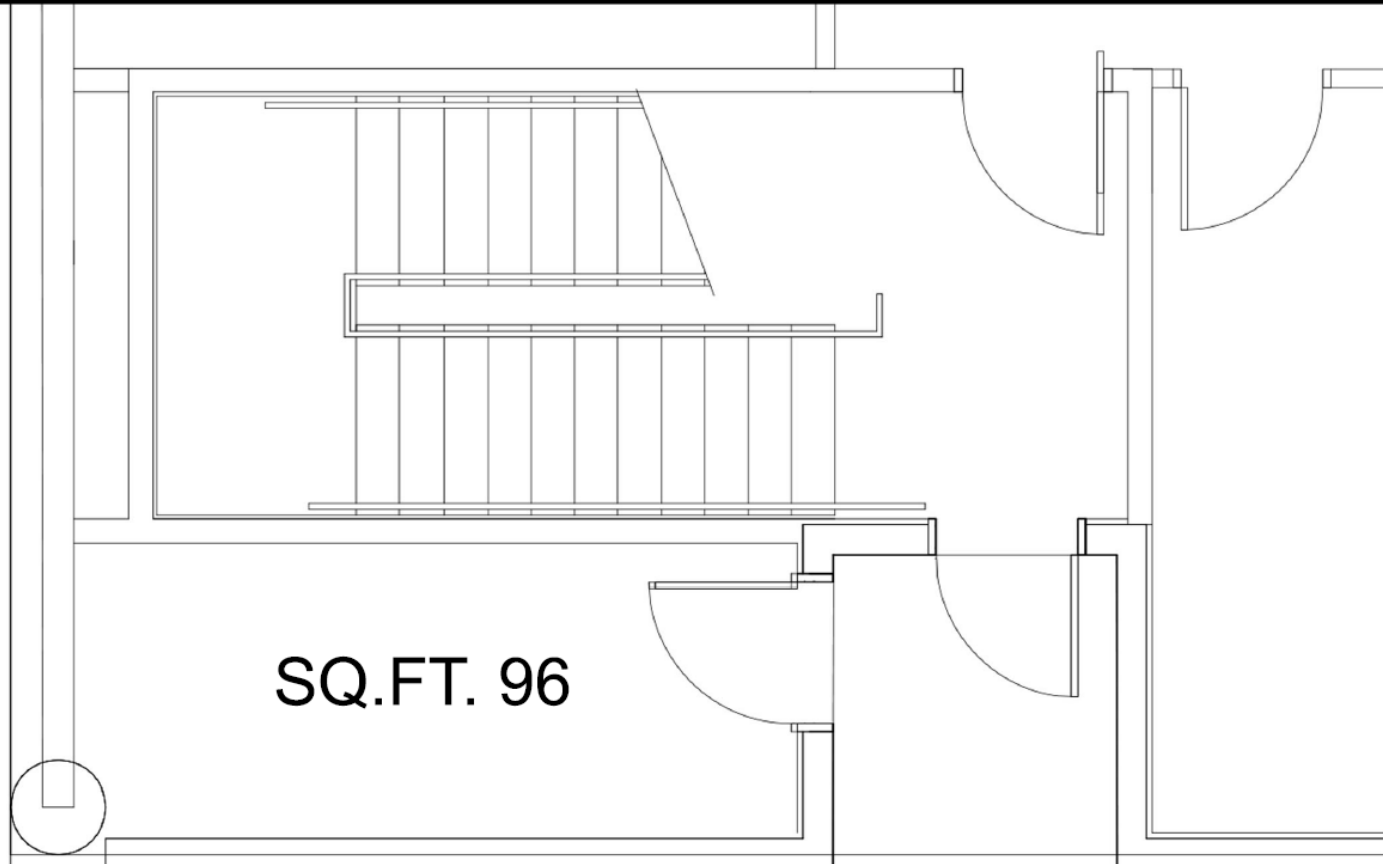
Ground Lease Agreement

Background: Alvest Equipment Services (USA), LLC (AES) provides critical technical support, maintenance, and parts for Ground Support Equipment (GSE) used by airlines and ground handlers. Efficient airport operations rely on the rapid repair and availability of GSE. To streamline their service delivery at CCIA, AES requires dedicated on-site space to house essential tools and inventory.

The proposed area consists of 96 square feet of specialized storage located in the West Breezeway on the first floor. This location provides AES with strategic proximity to the airfield, allowing for immediate access to equipment and tools necessary for daily business operations. The space will be used for the storage of Ground Support Equipment (GSE) repair tools and high-value assets.

Summary: This item is an ordinance to approve a 12-month lease agreement with Alvest Equipment Services (USA), LLC for 96 square feet of storage space. This agreement will generate rental revenue for the Airport Fund of \$754.08 per month.

Recommendation: City staff and the Airport Board Staff recommends approval of the lease agreement providing AES with dedicated storage space.



SQ.FT. 96



EXHIBIT B
WEST BREEZEWAY STORAGE AREA
1000 International Drive

Not to Scale

Sheet No. 2 of 2

Prepared by:	Randy Schumann
Approved by:	Victor Gonzalez
Date:	07/16/2025