

Mary Rhodes Pipeline and Pumping System Improvements

DRAFT

Nicholas Winkelmann, P.E., Director Water Systems and Support Services

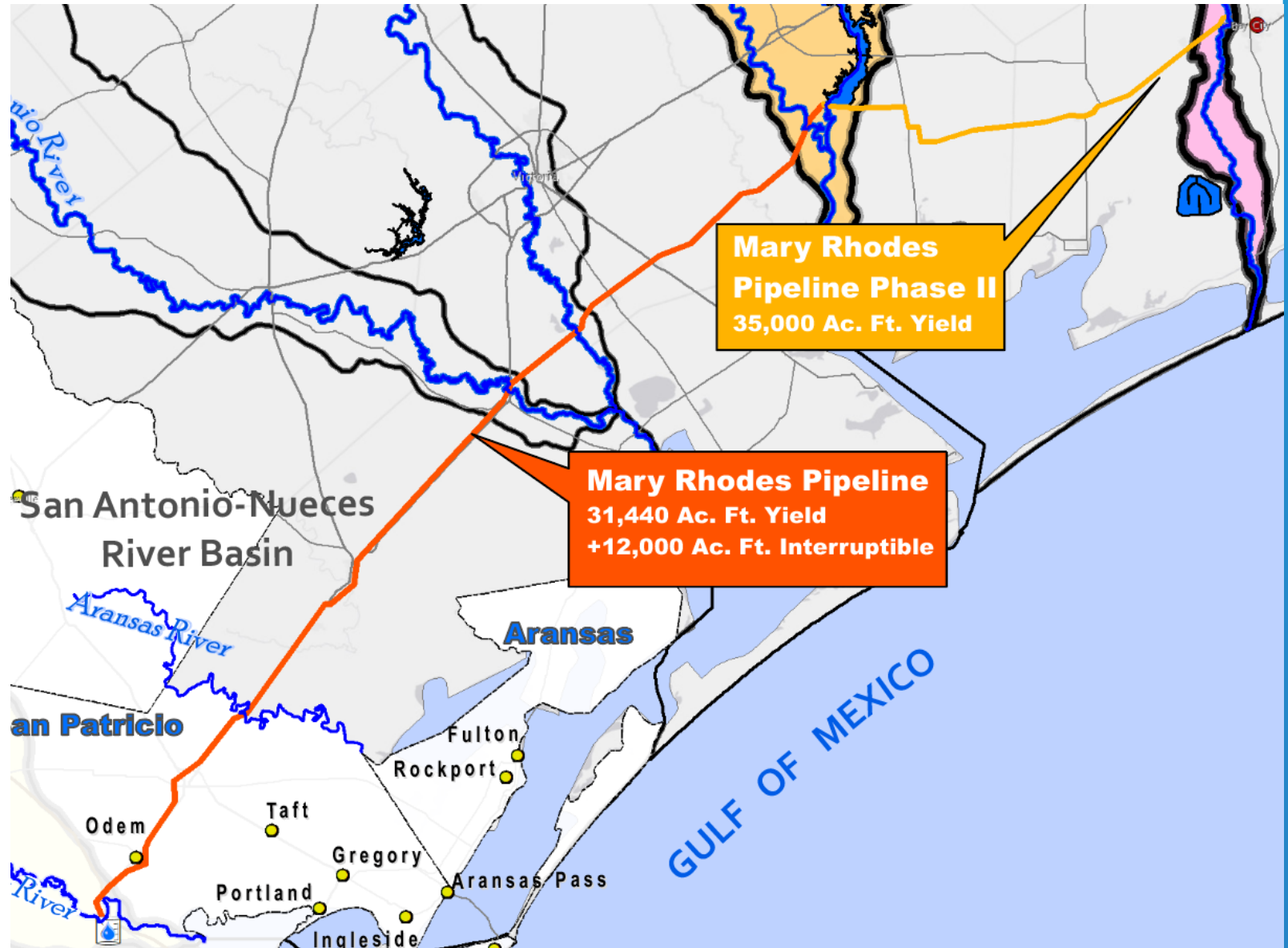
March 6, 2025

- **Mary Rhodes Pipeline (MRP) I**

- 101-mile-long pipeline running from Lake Texana near Edna, Texas to the O.N. Stevens Water Treatment Plant
- Construction started in 1997, completed in 1998

- **Mary Rhodes Pipeline (MRP) II**

- 42-mile-long pipeline that ties into MRP Phase I at the West Delivery Pump Station
- Construction started in 2014, completed in 2016



MRP I and II Water Sources



Lake Texana/LNRA

MRP I

Contract Minimum Amount Take or Pay: 31,440 acre-ft.

Interruptible A (if available): 4,500 acre-ft.

Interruptible B (if available): 7,500 acre-ft.



Colorado River

MRP II

Run of the River Water Rights: 35,000 acre-ft.

MRP Condition Assessment

- Completed May 2024
 - MRP is performing satisfactorily
 - Pipe pressure exceedance areas have been identified
 - Past failures are typically associated with access points, air relief valves, joints
 - Erosion areas reducing the cover over the pipeline have been identified at various water crossings
 - Varying soil corrosivity conditions exist throughout the length of the pipeline and current cathodic upgrades should continue as planned
 - Pump station upgrades are needed and should continue as planned
- Started Operation of the MRP at Schedule 3 (55 MGD) pumping on June 24, 2024
- Since initiating Schedule 3 pumping operations the MRP has provided an additional 2.5 BG of water to the system



Next Steps

Operate the MRP at Schedule 4 pumping through the completion of three separate projects

- AEP upgrades to Bloomington and Woodsboro pump stations
- MRP System Improvement Project
- Installation of combination air/vacuum valves



Bloomington Pump Station



Woodsboro Pump Station

AEP Upgrades

- Installation of additional transformers at both Bloomington and Woodsboro Pump Stations
- Installation of recloser and other electrical supply equipment at both the Bloomington and Woodsboro Pump Stations



MRP System Improvement Project

Bloomington Pump Station

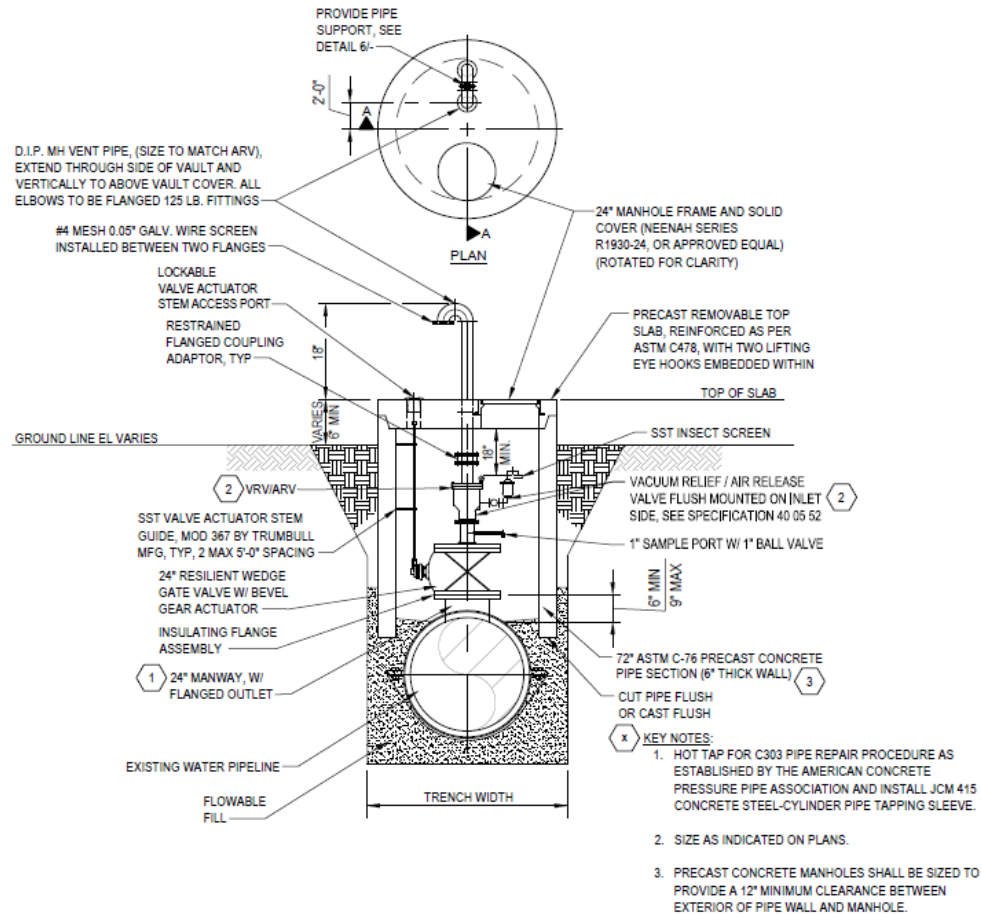
- Additional horizontal split-case centrifugal pump
- Two variable frequency drives
- Electric motor valve actuators
- Electro-magnetic flow meter with concrete vault
- Low voltage emergency generator
- HVAC improvements
- Instruments and control programming for new pump, pump control valves and flow meters

Woodsboro Pump Station

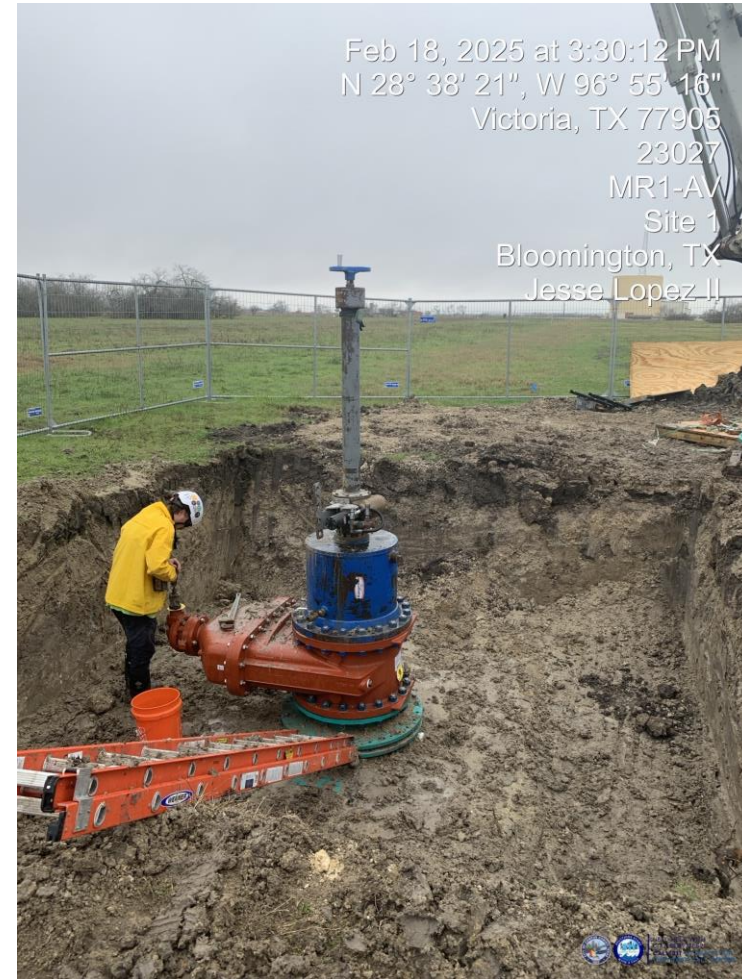
- One variable frequency drive
- Electric motor valve actuators
- Electro-magnetic flow meter and concrete vault
- Low voltage emergency generator
- HVAC improvements
- Instruments and control programming for new pumps, pump control valves and flow meters
- Additional horizontal split-case centrifugal pump

Air/Vacuum Valve Installation

Installation of seven combination air relief/vacuum valves along the MRP

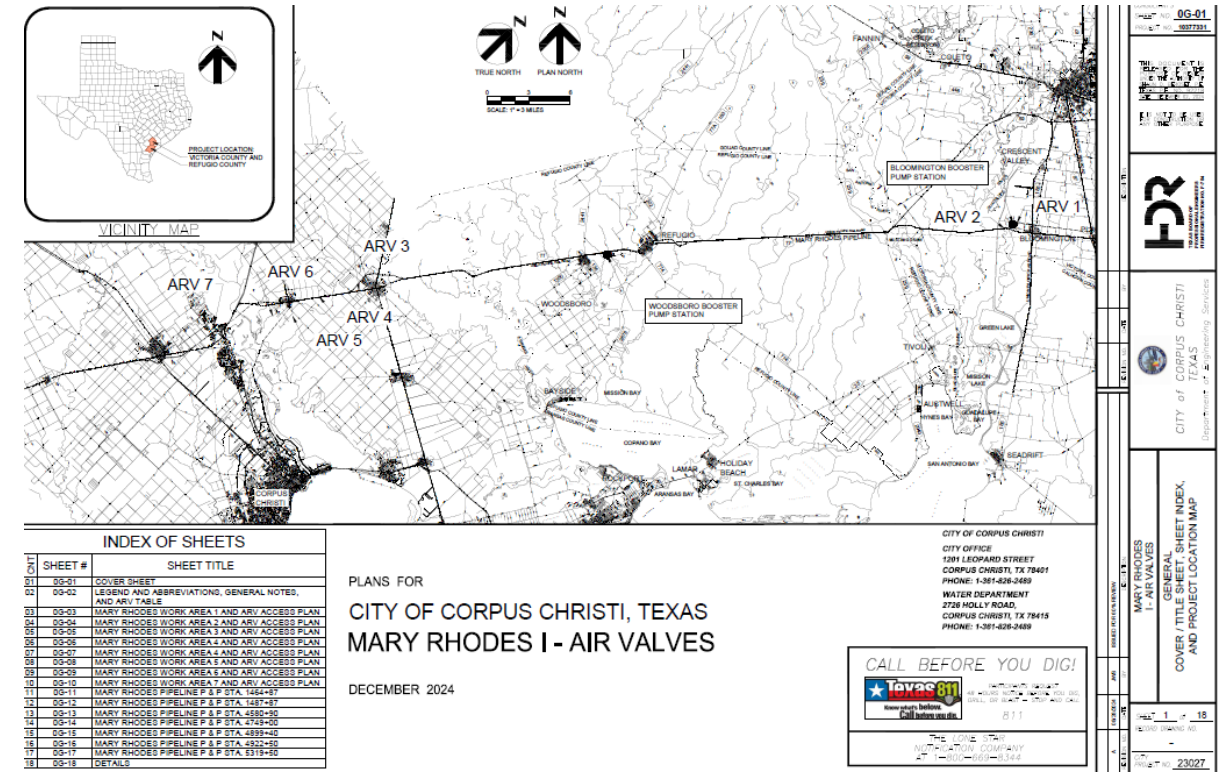


2 VACUUM RELIEF/AIR RELEASE VALVE
NOT TO SCALE



Summary

- AEP upgrades
 - Complete
- Air/Vacuum valve installation
 - Projected substantial completion date is March 2025
- Pump Station Improvement Project
 - Projected substantial completion date is December 2025



CCW and LNRA continue to coordinate and work together to begin Schedule 4 pumping operations mid-March 2025



Thank you!

