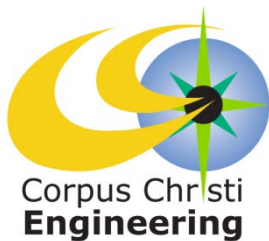




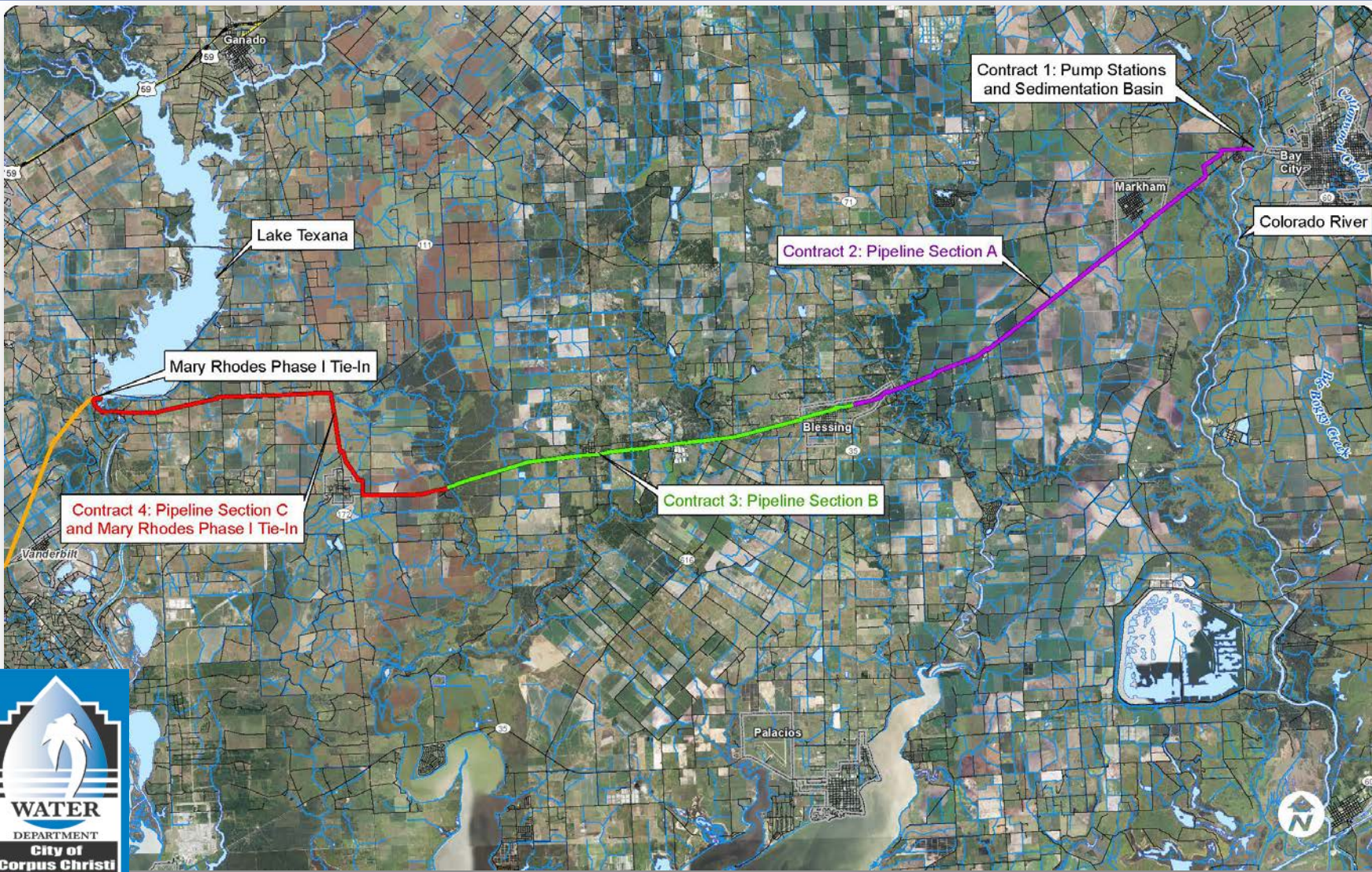
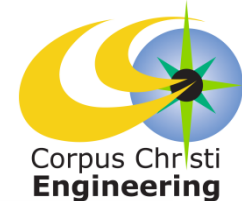
Mary Rhodes Pipeline, Phase 2 Status Update



Council Presentation
August 20, 2013

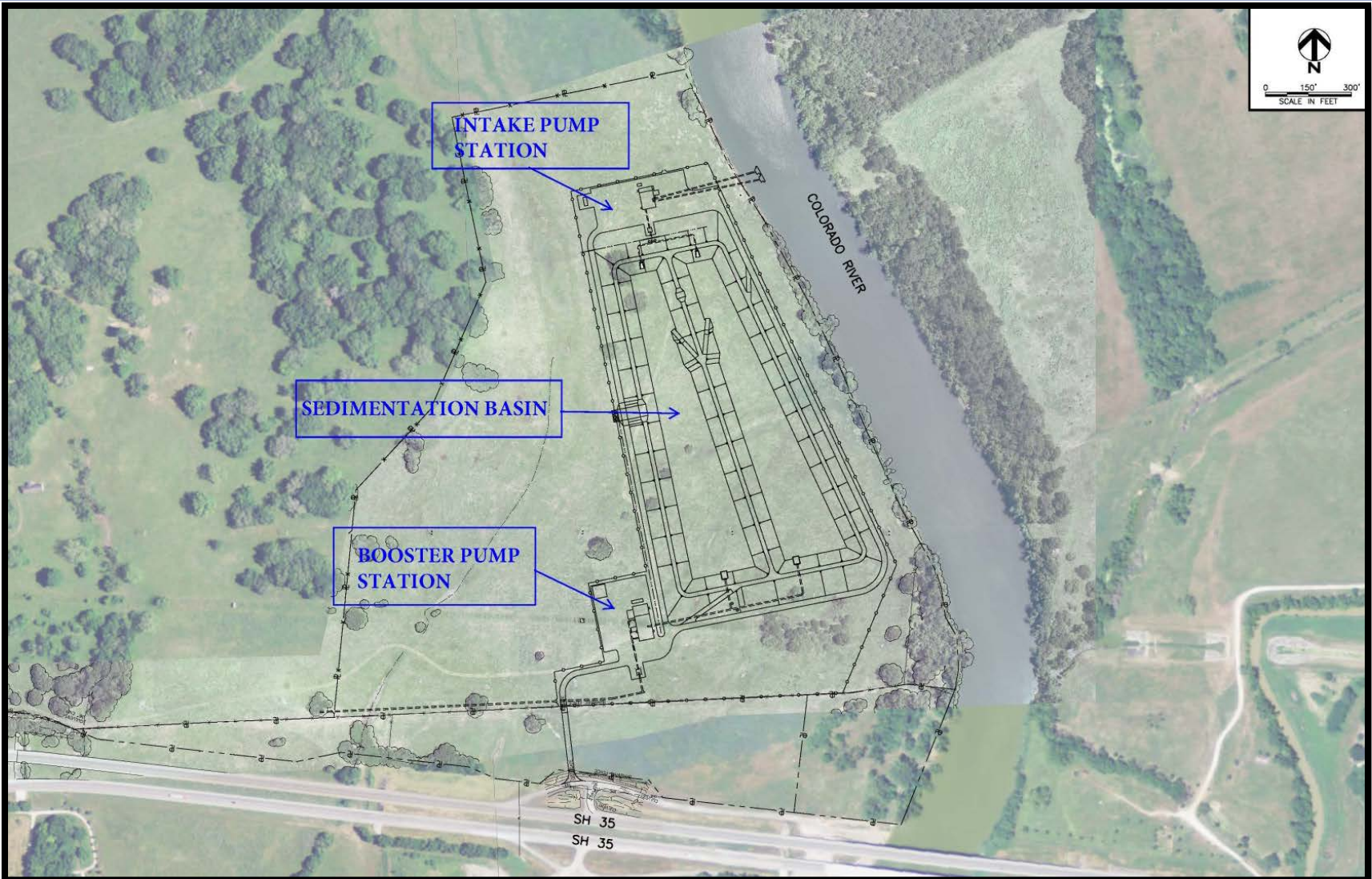
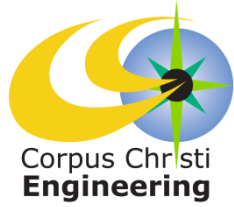


Project Scope and Area





Contract 1: Pump Stations and Sedimentation Basin





Design Phase (4 Construction Packages and 1 Pump/Motor Pre-Purchase Package)

- ✓ Design and Permitting on Schedule
 - ✓ Preliminary Design Report
 - ✓ 60% Design Package
 - ✓ 90% Design Package
 - ✓ 100% Design Package
- ✓ Coordinating with AEP on Power Supply Agreement – Execution of Agreement in September 2013
- ✓ Issued for Bid Documents on Schedule for October 2013

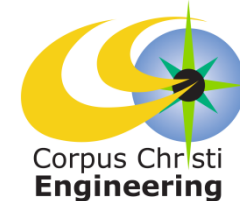
Pump/Motor Pre-Purchase

- Pump Procurement Advertised on August, 2013
- Pump Contract Award Scheduled for November, 2013
- Pumps Procured and Delivered December, 2014





Project Status



Land Acquisition

- ✓ 33% of Easement Length and 50% of Landowners with Signed Easement Agreements – On Target for Scheduled Completion
- ✓ Negotiating Easement Terms with Remaining Landowners
- ✓ Easement Acquisition Scheduled to Complete Before the End of 2013

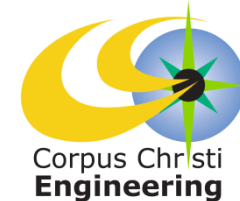
Project Delivery Mitigation

- ✓ Pump Delivery – Float Time Built into Schedule with Pre-Purchase Method
- ✓ Land Acquisition – Acquisition Team Negotiating Remaining Pipeline Easements, Potential Condemnation of Pump Stations/
Sedimentation
Basin Property
- ✓ Power Supply – Project Team Coordinating with AEP throughout Project to Secure Permanent and Temporary Power





Program Budget



PROJECT BUDGET	
Mary Rhodes Pipeline	
Phase 2	
<u>FUND SOURCE:</u>	
Texas Water Development Board Loan.....	\$7,961,825.00
Water Revenue Bonds.....	56,209,685.00
Future Funding Required.....	96,776,493.00
PROJECT TOTAL.....	\$160,948,003.00
<u>FUNDS REQUIRED:</u>	
90% Construction Estimate for Pipeline/Pump Stations/Sedimentation Basin (with 10%contingency for pipelines and 15% contingency for pump station and sedimentation basin).....	130,000,000.00
Engineer Design (Freese and Nichols, Inc.)*.....	11,335,503.00
Legal Services & Future Misc Project Costs (Bruce Hawn, Welder Leshin, LLP)**..	10,812,500.00
Power Supply Costs.....	1,000,000.00
Reimbursements.....	7,800,000.00
TOTAL.....	\$160,948,003.00
PROJECT BUDGET BALANCE.....	\$0.00
*Original Design Contract awarded October 28, 2003 by Motion No. M2003-394	
**Legal Services Agreement awarded July 12, 2011 by Motion No. M2011-164	

