



EAST GA				
Description	Area SF	Acreage	Rent PSF/YR	Total
EGA H-2	15,000	0.34	\$1,500	\$22,500.00
EGA H-3	30,800	0.71	\$1,650	\$50,820.00
EGA of 1 (TERM)	4,900	0.11	\$4,000	\$29,400.00
EGA of 3	5,770	0.13	\$5,450	\$32,600.50
EGA of 4	5,032	0.11	\$5,650	\$28,430.80
EGA of 5	7,464	0.17	\$5,450	\$42,171.40
PARKING LOT	51,602	1.18	\$0.300	\$15,480.60
APRON	62,000	1.42	\$0.325	\$20,150.00
UNDEVELOPED	22,944	0.53	\$0.300	\$6,883.20
FUEL FARM PAD	4,776	0.11	\$0.300	\$1,432.80
<b>Total</b>	<b>210,288</b>	<b>4.81</b>	<b>\$27,325</b>	<b>\$249,849.80</b>

### East GA Apron

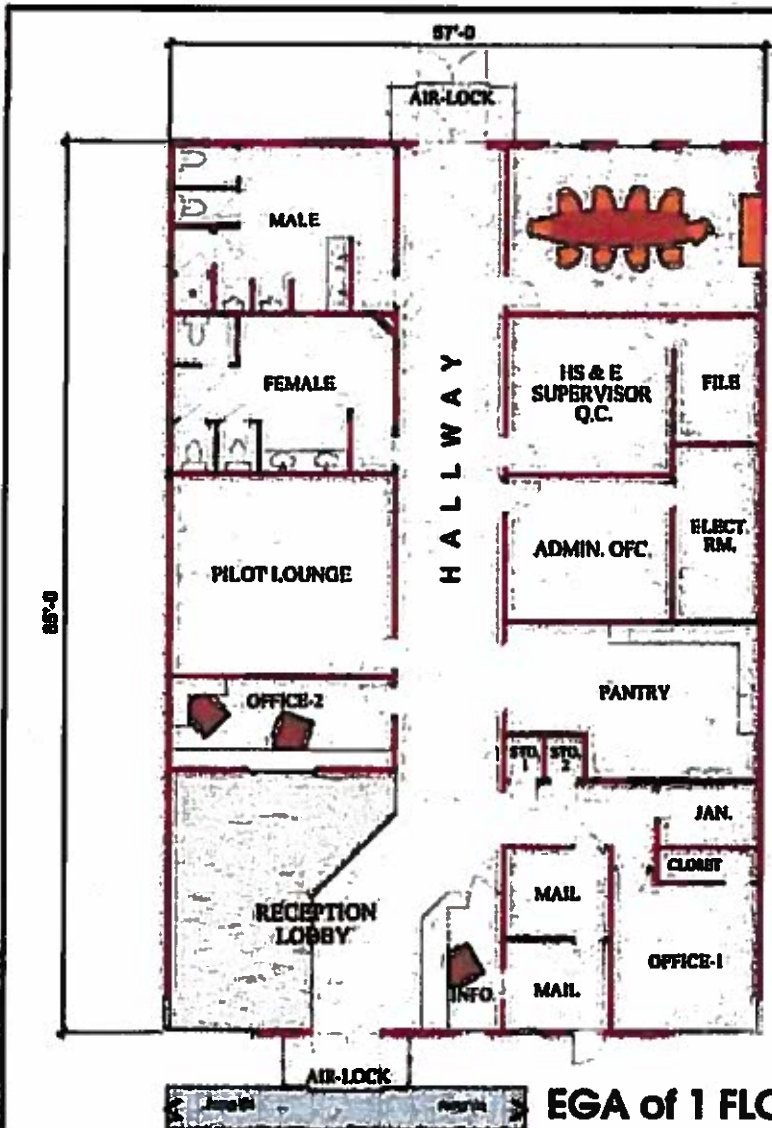
EGA Fuel Farm			
Description	Capacity (Gallons)	Rent/YR	Total
JET A	36,000	\$0.750	\$27,000.00
AVGAS	12,000	\$0.750	\$9,000.00
UNLEADED	2,000	\$0.750	\$1,500.00
DIESEL	2,000	\$0.750	\$1,500.00
<b>Total</b>	<b>52,000</b>		<b>\$39,000.00</b>



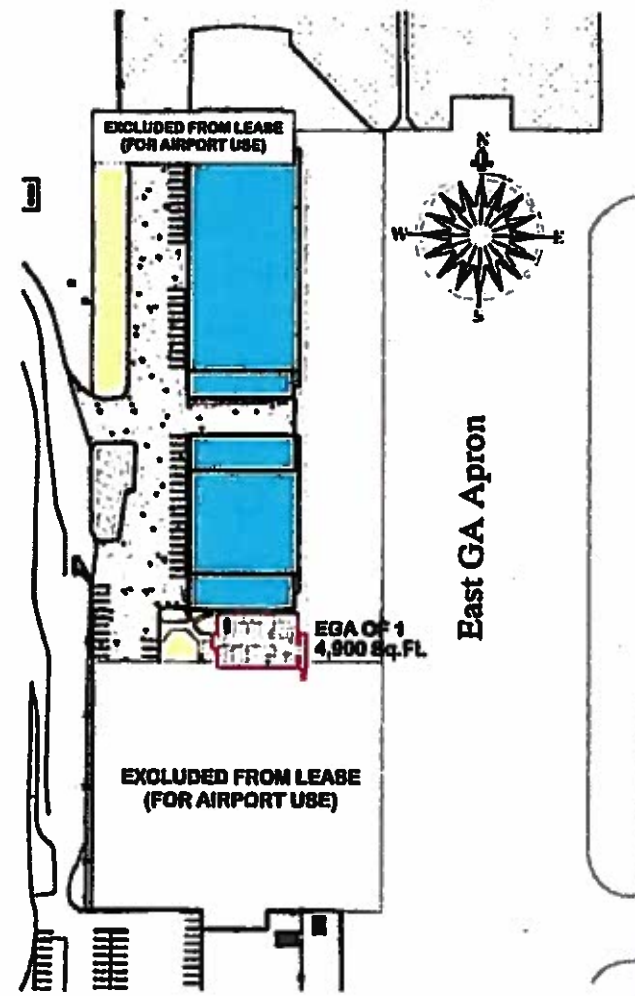
### CORPUS CHRISTI INTERNATIONAL AIRPORT

### EAST FBO LEASED PREMISES AND AREA CALCULATIONS EXHIBIT 1

Prepared by: CCBI  
 Approved by: FRED SEGUNDO  
 Date: 07-03-2014



EGA of 1 FLOOR Area = 4,900 Sq.Ft.



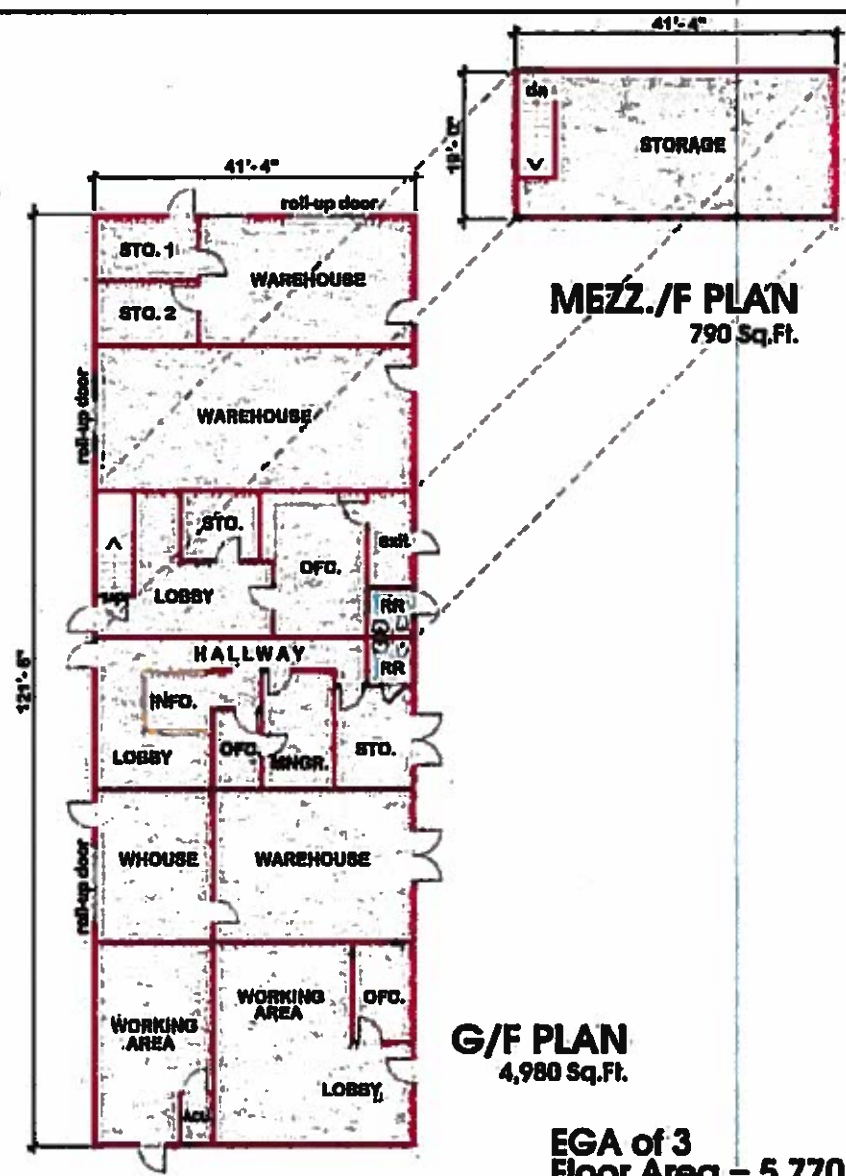
SITE PLAN



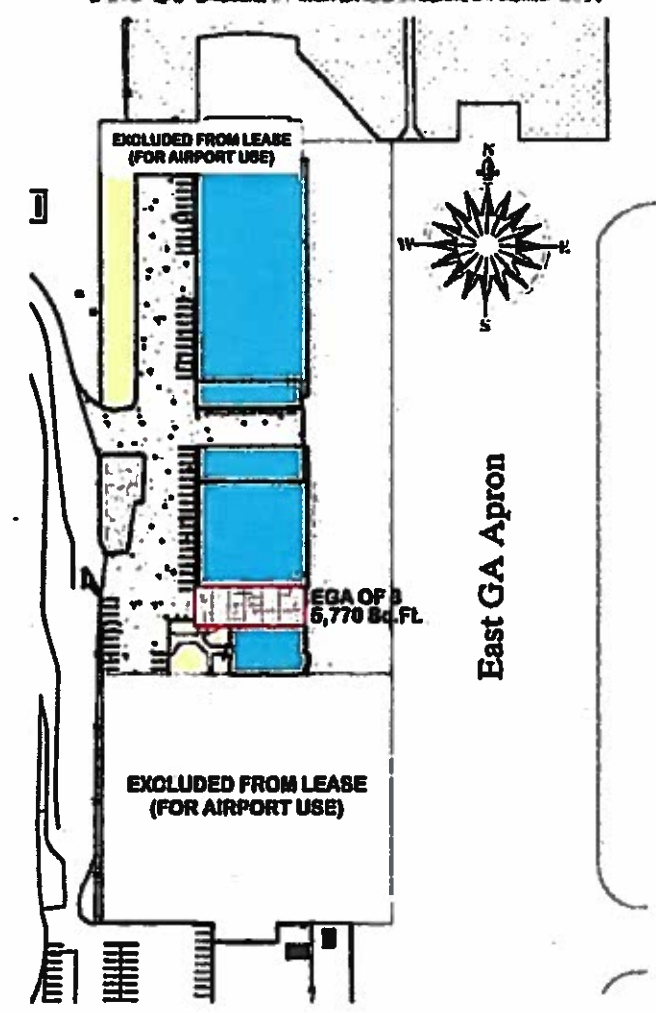
CORPUS CHRISTI INTERNATIONAL AIRPORT

EAST GA of 1 AS-BUILT FLOOR PLAN  
EXHIBIT 1

Prepared by:	CCBI
Approved by:	FRED SEGUNDO
Date:	07-01-2014



EGA of 3  
Floor Area = 5,770 Sq.Ft.

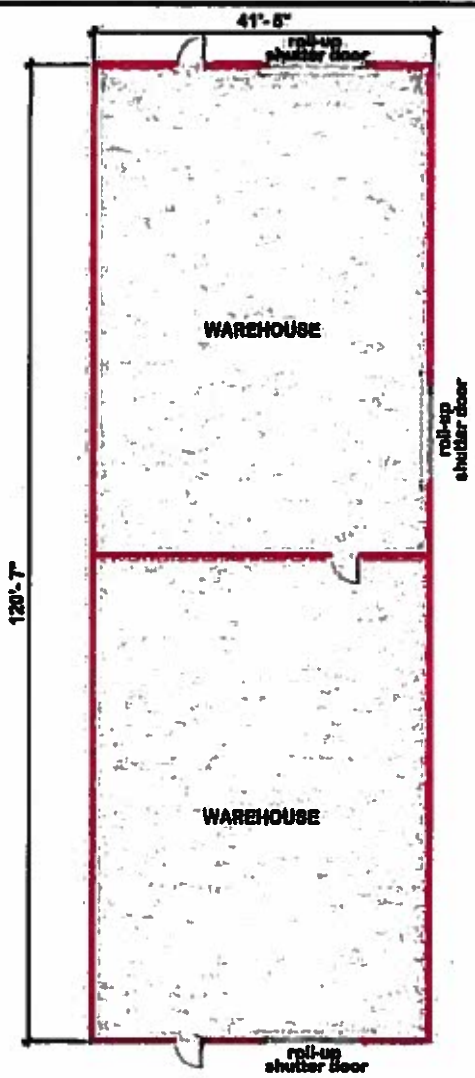


CORPUS CHRISTI INTERNATIONAL AIRPORT

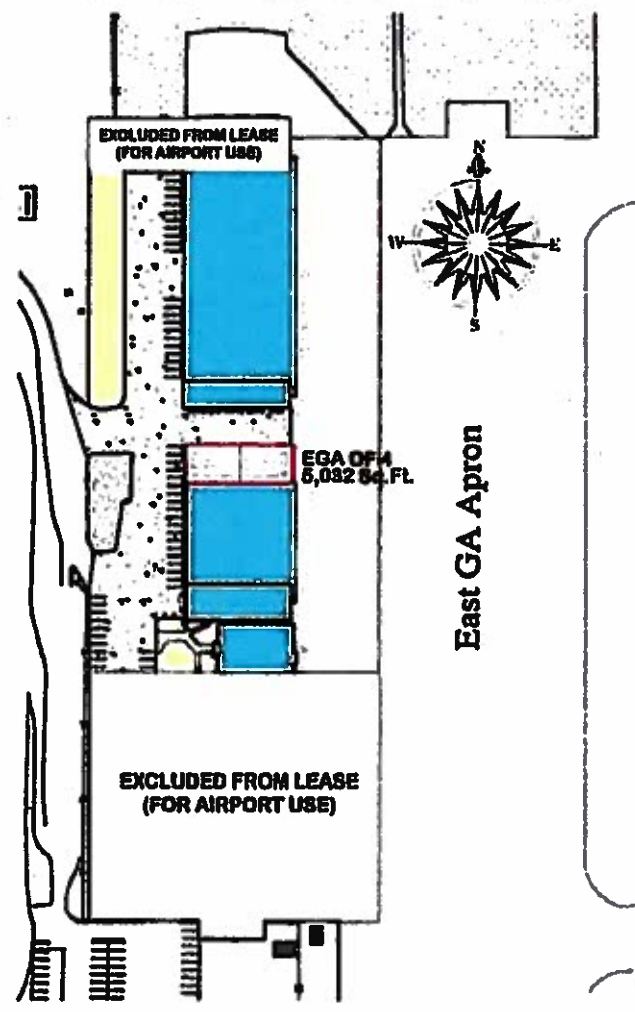
**EAST GA of 3 AS-BUILT FLOOR PLAN  
EXHIBIT 1**

Prepared by: CCBJ  
 Approved by: FRED SEGUNDO  
 Date: 07-01-2014





**EGA of 4  
Floor Area = 5,032 SqFt.**



**SITE PLAN**



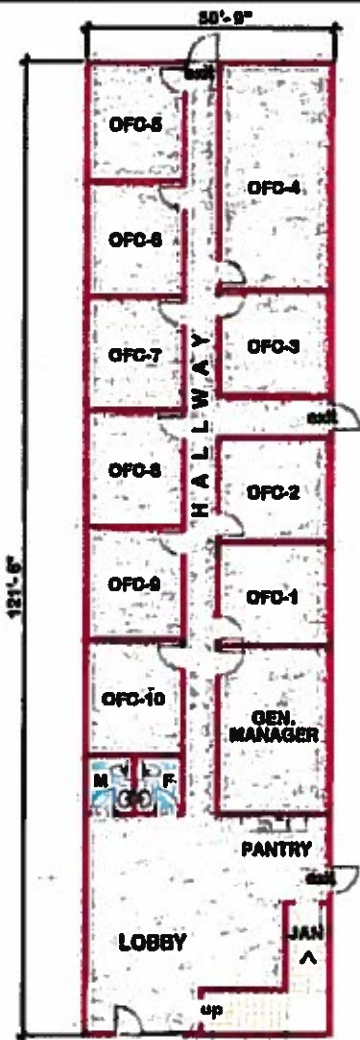
**CORPUS CHRISTI INTERNATIONAL AIRPORT**

**EAST GA of 4 AS-BUILT FLOOR PLAN  
EXHIBIT 1**

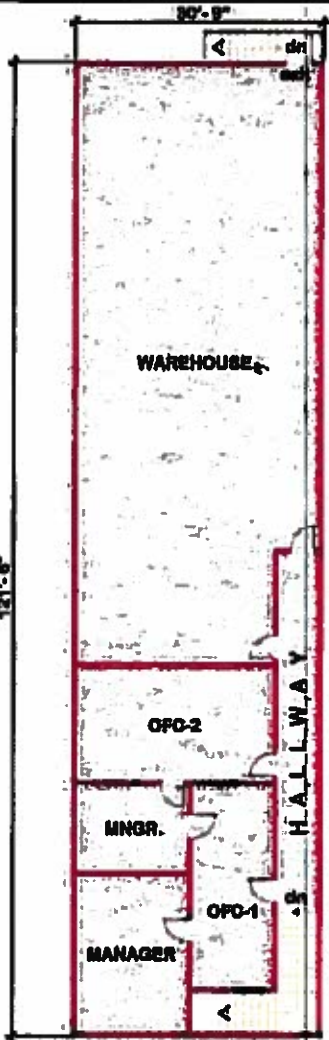
Prepared by:	CCBI
Approved by:	FRED SEGUNDO
Date:	07-01-2014

Sheet No. :

4 of 5

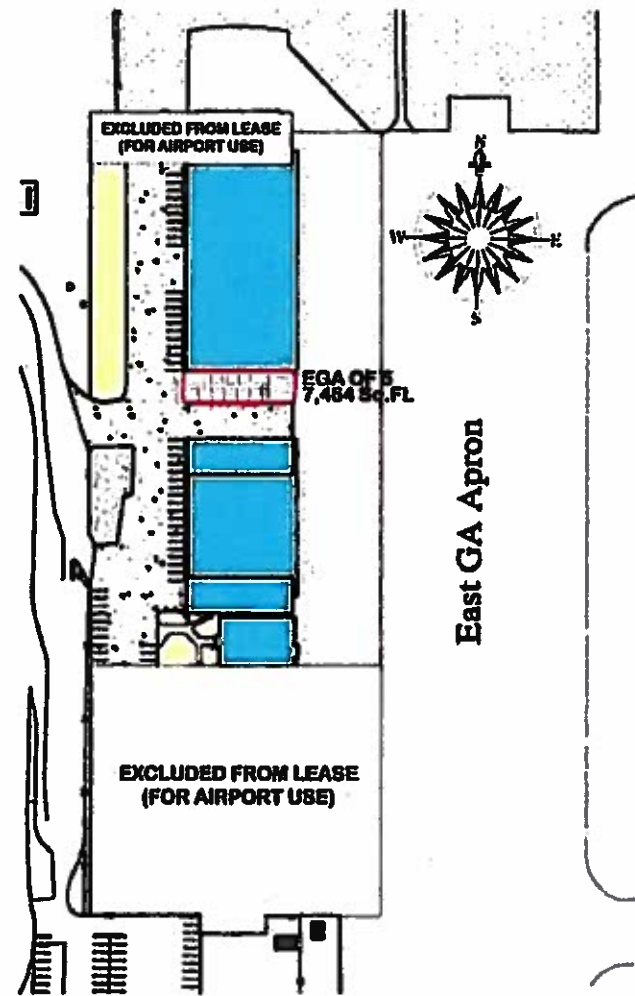


**G/F PLAN**  
3,732 Sq.Ft.



**2/F PLAN**  
3,732 Sq.Ft.

**EGA of 5**  
**Floor Area = 7,464 Sq.Ft.**



**SITE PLAN**



**CORPUS CHRISTI INTERNATIONAL AIRPORT**

**EAST GA of 5 AS-BUILT FLOOR PLAN  
EXHIBIT 1**

Prepared by:	CCBI
Approved by:	FRED SEGUNDO
Date:	07-03-2014