



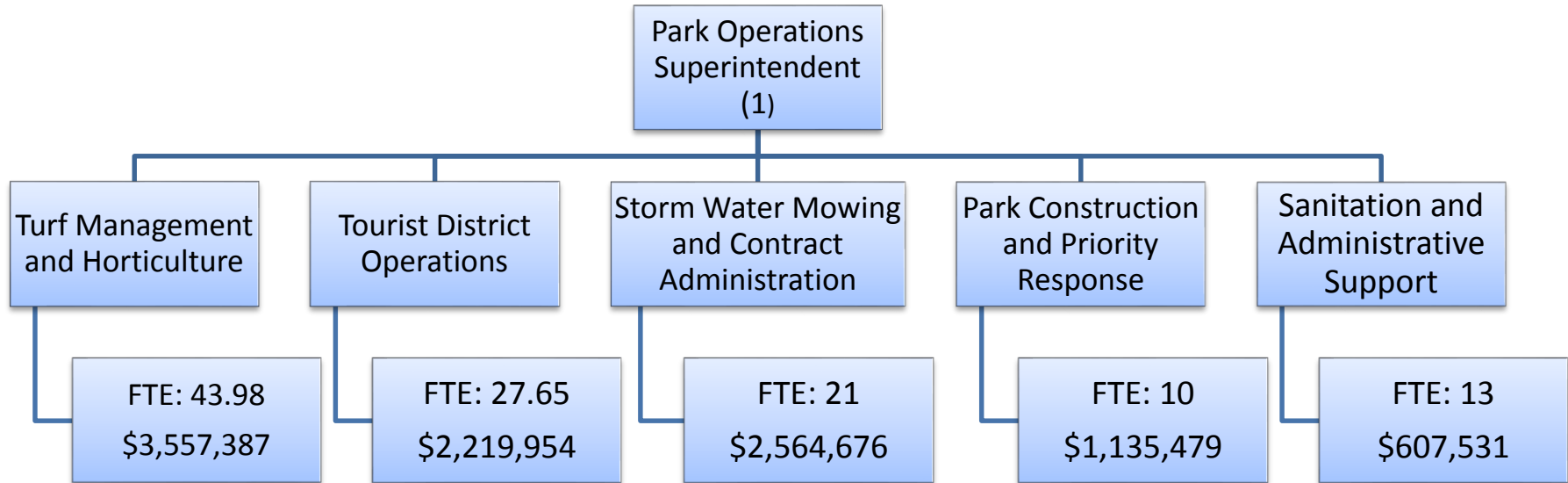
Park Maintenance and Operations Update to City Council



Council Presentation
May 26, 2015



Park Operations Team Overview





Park Operations By The Numbers



Parks	197	
	Parks	Storm Water
Acreage	1,660	2,044
FY 14 Acres Mowed (In House)	17,293	5,371
FY 14 Acres Mowed (Contract)	6,981	8,752
Playgrounds	127	
FY 14 Inspections	414	
FY 14 Repairs	2 major, 39 minor	
FY 14 Removals	4	



Strike Force/Priority Response Team



- Created to trouble shoot safety and aesthetic issues
 - September 2013
 - Four park operations technicians
 - Two vehicles – Mowing, small construction and repair equipment
- System
 - Inspection Routes
 - 7 routes, 53 individual locations
 - Minor repairs, brush, trash addressed along the way
 - Coordination with operating departments, outside agencies



Strike Force/Priority Response Team



	2013	2014	2015	TOTALS
Routes Inspected	14	98	22	134
Planned Work Orders Completed	11	118	28	157
Response Work Orders Completed	10	17	32	59

Examples of issues addressed:

Overgrown medians, parks and storm water

Damaged/Vandalized signs and public property

Storm Response

Special Projects – Downtown, North Beach, Agnes-Laredo Corridor Clean Ups



Mowing Consolidation



- Streamline city-wide mowing
 - Phase One
 - Combine Park and Street/Storm Water Operations
 - 19 FTEs moved from SW to Parks & Recreation
 - In-house mowing crew
 - Administration of Storm Water and Park Mowing Contracts
 - Efficiencies and Improvements
 - Improved turn around time for in-house crews
 - Parks near storm water ditches
 - Different equipment
 - Increased park mowing contract and administration
-



Mowing Consolidation



- Next Steps
 - Summer 2015
 - Mowing Contracts – Add Waste Water Plants
 - FY2016
 - Evaluate current program
 - Other landscaping and maintenance contracts for consolidation
 - Police Department
 - Health Department
 - Facility Maintenance
 - Capital Projects/Surplus Property



Park Maintenance Enhancement



- Oct 2012 - Parks & Recreation Master Plan Approved
 - Includes standards for development and maintenance
- Sept 2014 - Parks Maintenance Increased by \$515,000 for FY2015
 - Additional contract mowing and administration
 - Level B, C and D parks
 - In-house crews to Level A Parks
 - Palm tree trimming contract
 - In-house tree crews focus on playable space and protecting canopy
 - Park Equipment and Safety improvements
 - Playground removals, replacement, repairs
 - Standardization of fencing, signage
 - Equipment and vehicles
 - Master Plan Maintenance Handbook



Questions from Park Fans



????