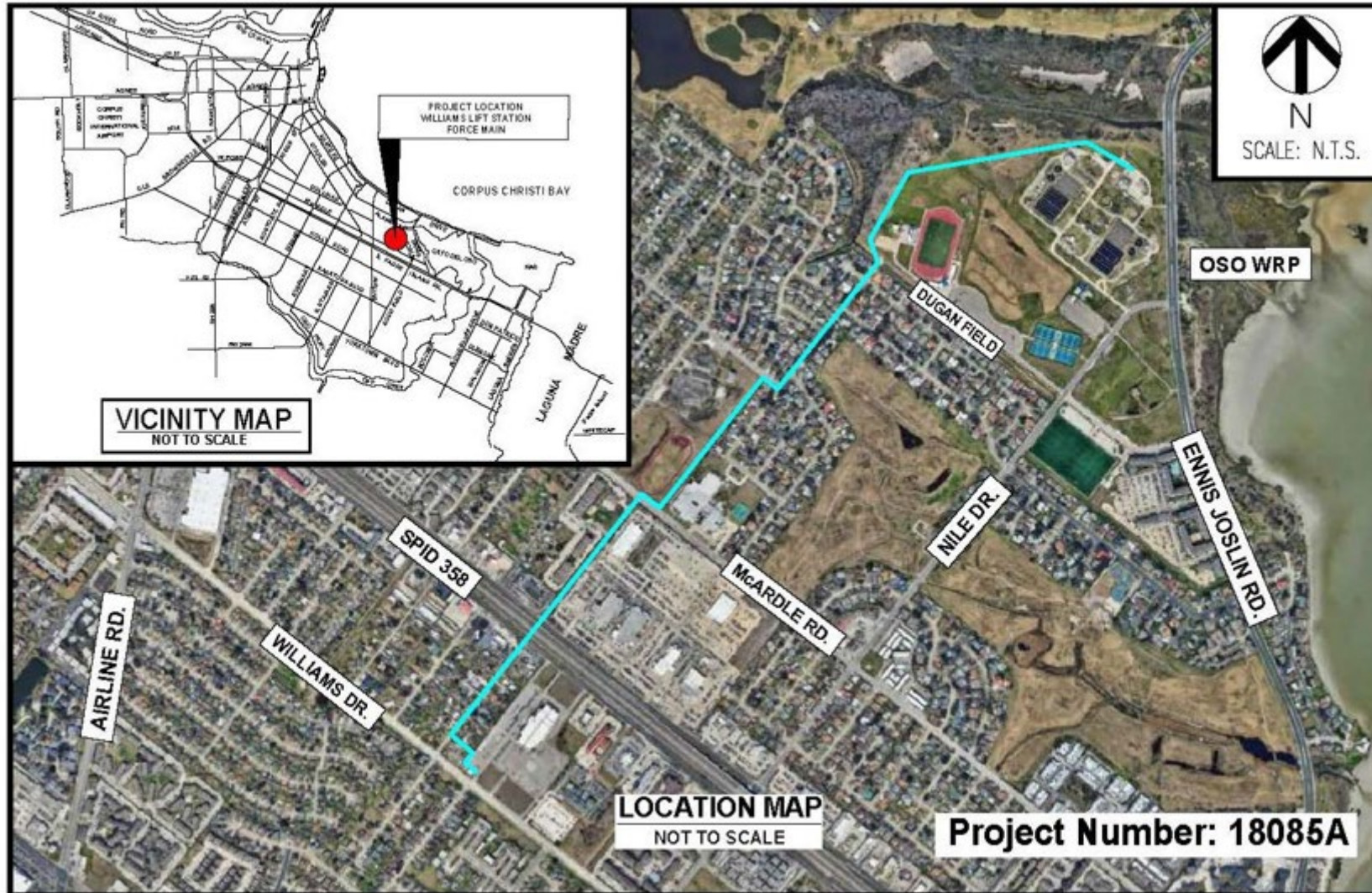


# Williams Lift Station Force Main Construction Contract

Wesley Nebgen  
Director of Water System Infrastructure, Corpus Christi Water  
September 23, 2025



# Project Location





# Background

## Lift Station

- The Williams Lift Station is the largest lift station in the City's wastewater collection system
- This lift station pumps an average daily flow of 10 MGD of wastewater, with the ability to handle a peak flow capacity of 49 MGD



## Force Main

- The existing 36" ductile iron pipe force main was installed in 1978, and is currently 47 years old
- This critical force main conveys approximately 30% of the City's wastewater to the Oso Water Reclamation Plant for treatment



# Project Scope

Proposed improvements include:

- Construction of a new force main that is parallel to the existing force main
- The new force main will be approximately 8,500 linear feet of 42-inch HDPE pipe with the purpose of transporting wastewater from the Williams Lift Station to the Oso WRP
- The new force main will be installed via conventional trenching method and auger bore



# Project Timeline

2020 - 2025	2025	2025 - 2027
October - February	March - September	October - November
Design	Bid/Award	Construction

Project schedule reflects City Council award in September 2025 with anticipated construction completion in November 2027.

## Staff Recommendation

Staff recommends awarding the construction contract for the Williams Lift Station Force Main project to Cash Construction Company, Inc., in the amount of \$18,555,978. The fiscal impact in FY 2025 is an amount of \$12,000,000 with funding available from the Wastewater Capital Fund. The remaining funds will be incurred in FY 2026 in an amount of \$6,555,978.

The top half of the slide features four horizontal, wavy bands of different shades of blue (light blue, medium blue, dark blue, and very dark blue) that create a sense of movement and depth.

Thank you!

