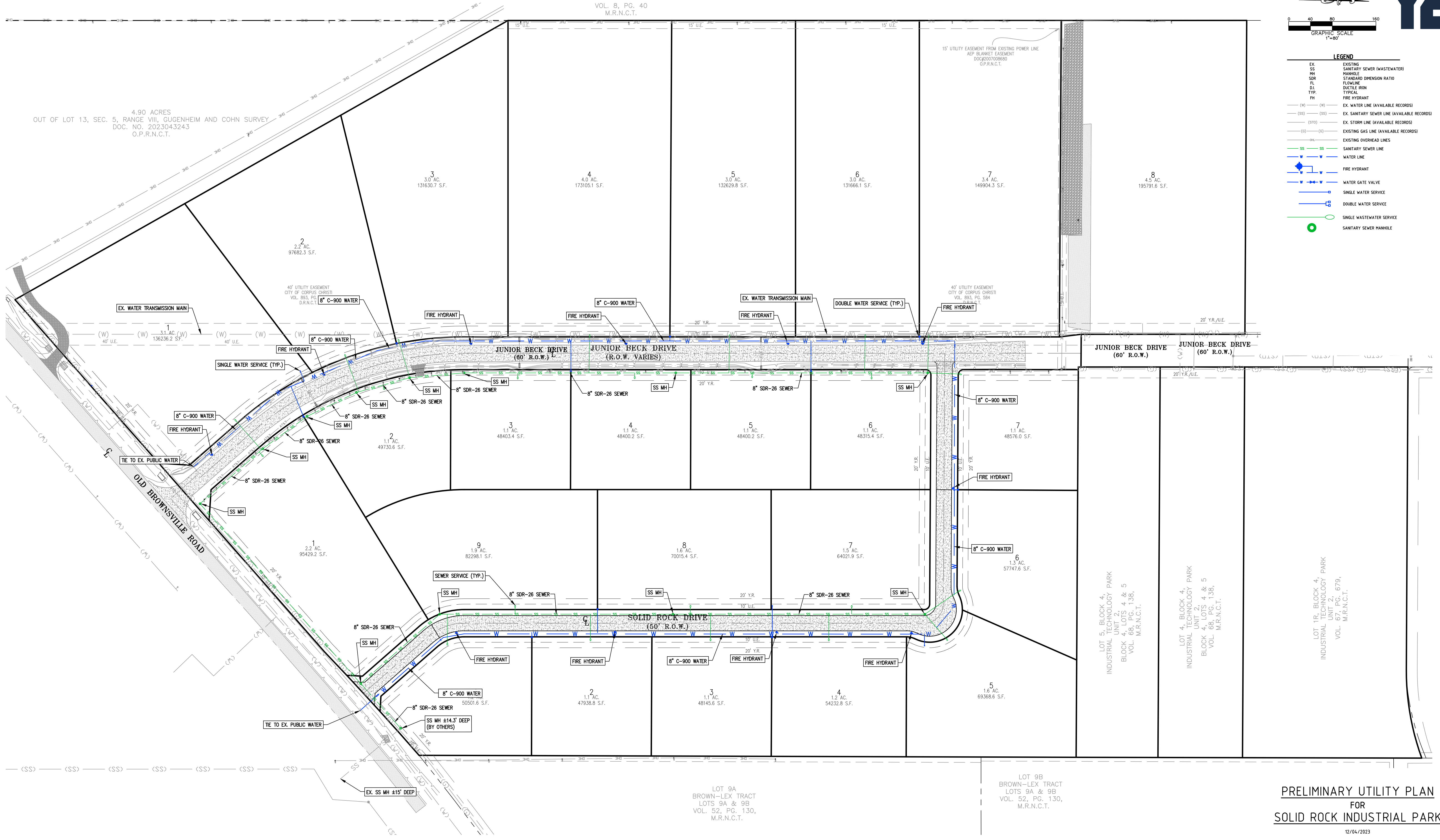


LEGEND

| | |
|-------|---|
| EX | EXISTING SANITARY SEWER (WASTEWATER) |
| SS | MANHOLE |
| SDR | STANDARD DIMENSION RATIO |
| FL | FLOWLINE |
| DI | DUCTILE IRON |
| TYP. | TYPICAL |
| FH | FIRE HYDRANT |
| (W) | EX. WATER LINE (AVAILABLE RECORDS) |
| (SS) | EX. SANITARY SEWER LINE (AVAILABLE RECORDS) |
| (STO) | EX. STORM LINE (AVAILABLE RECORDS) |
| (G) | EXISTING GAS LINE (AVAILABLE RECORDS) |
| OL | EXISTING OVERHEAD LINES |
| SS | SANITARY SEWER LINE |
| W | WATER LINE |
| FH | FIRE HYDRANT |
| WV | WATER GATE VALVE |
| WS | SINGLE WATER SERVICE |
| DS | DOUBLE WATER SERVICE |
| SS | SINGLE WASTEWATER SERVICE |
| SS | SANITARY SEWER MANHOLE |

4.90 ACRES
OUT OF LOT 13, SEC. 5, RANGE VIII, GUGENHEIM AND COHN SURVEY
DOC. NO. 2023043243
O.P.R.N.C.T.



**PRELIMINARY UTILITY PLAN
FOR
SOLID ROCK INDUSTRIAL PARK**

12/04/2023



CIVIL • PLANNING • CONSULTING

9708 S. PADRE ISLAND DR., SUITE A-200 | CORPUS CHRISTI, TEXAS | 78418
361-455-4400 | HYDROLOGICAL | TEXAS ENGINEERING FIRM # 25943
PROJECT NO. 1888-23-01 © 2023 BY YORK ENGINEERING, INC.