



Zoning Case #0515-01

The Mostaghasi Investment Trust

From: "RS-6" Single-Family 6 District
To: "RM-1" Multifamily 1 District

Planning Commission
Presentation
May 6, 2015

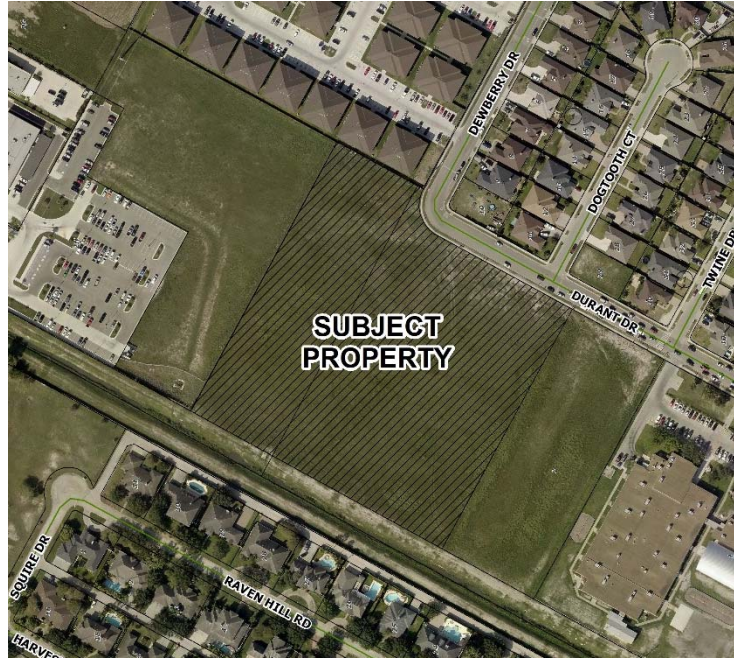


Aerial Overview



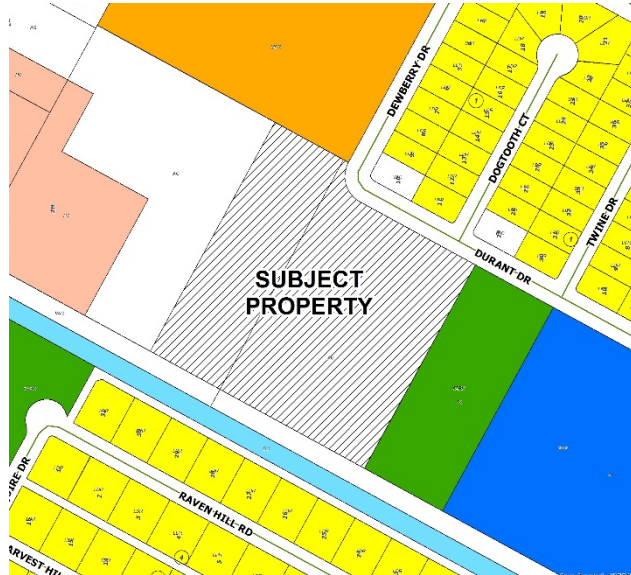





Aerial



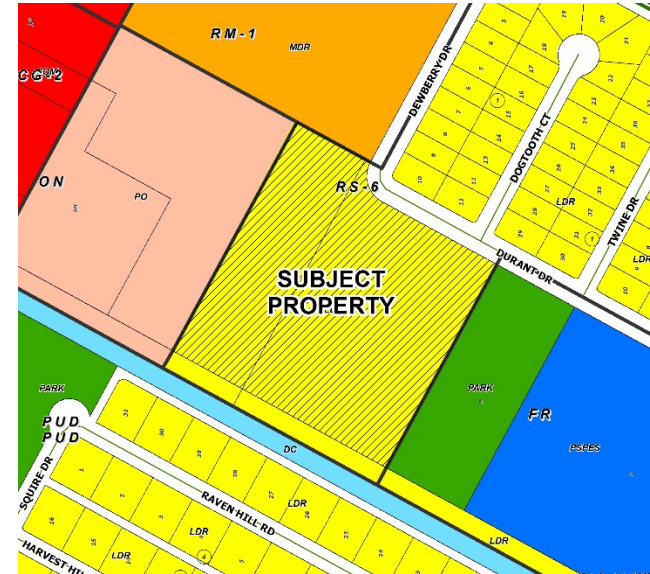






Existing Land Use



- | | | | |
|---|--------|---|---------------------|
|  | Vacant |  | Commercial |
|  | Park |  | Public/ Semi-Public |

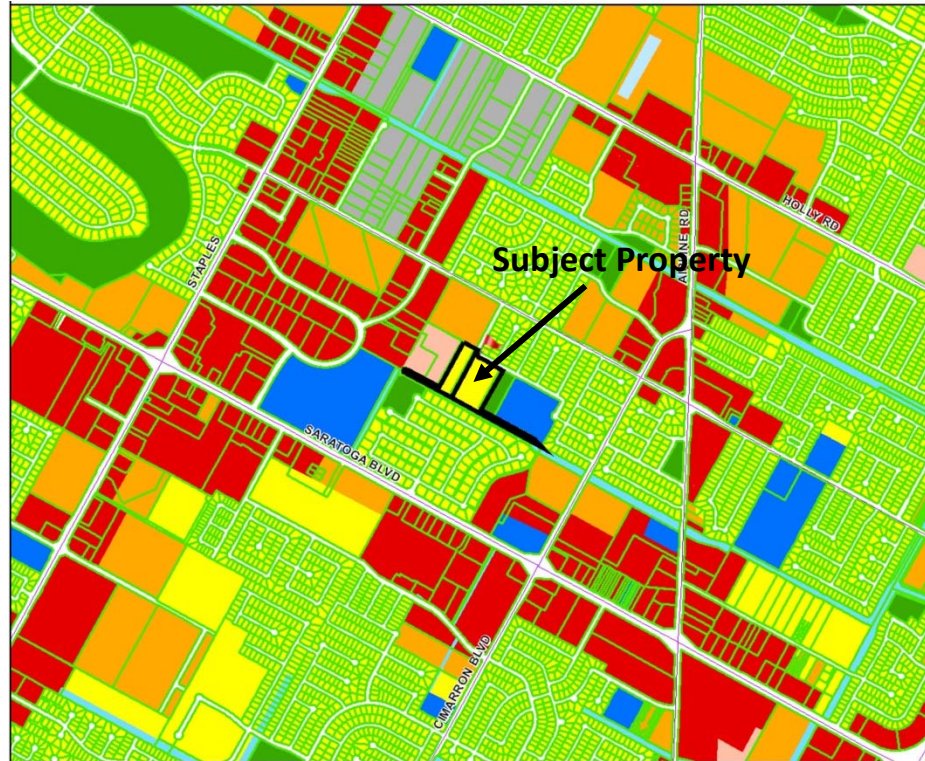
Future Land Use



- | | | | |
|--|----------------------------|---|---------------------|
|  | Low Density Residential |  | Professional Office |
|  | Medium-Density Residential |  | Drainage Corridor |



Future Land Use Map





Pictures

South Across Durant Drive





Pictures

Southeast Across Durant Drive





Pictures

Southwest Across Durant Drive





Pictures

West Portion of Property Adjacent to Wooldridge Creek Apartments





Pictures

North on Dewberry Drive





Pictures

East on Durant Drive





Pictures

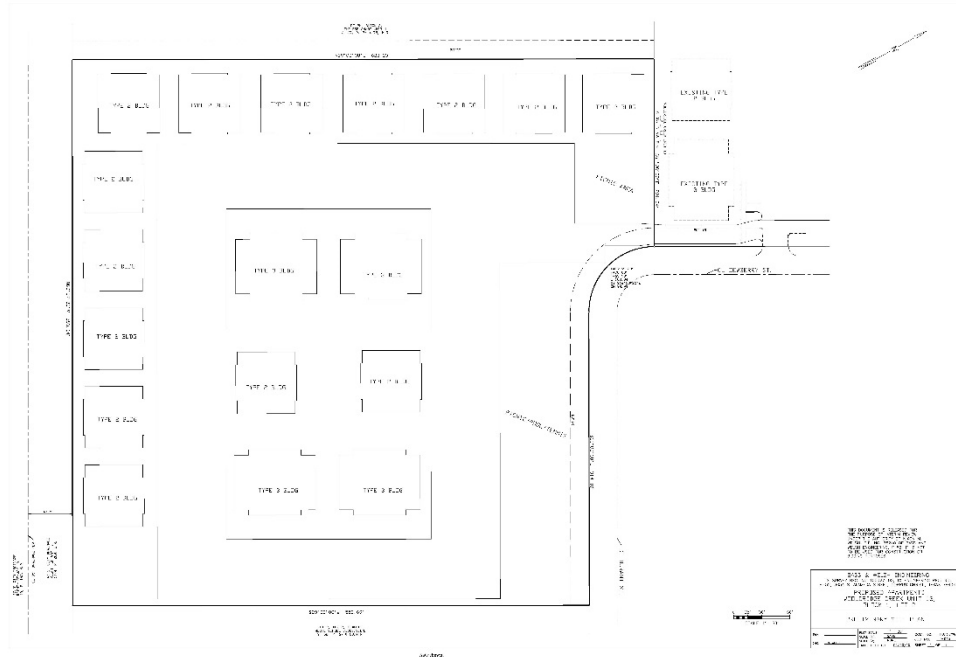
East on Wooldridge Road at Dewberry Drive





Pictures

Proposed Site Plan





Public Notification

28 Notices mailed inside 200' buffer
7 Notices mailed outside 200' buffer

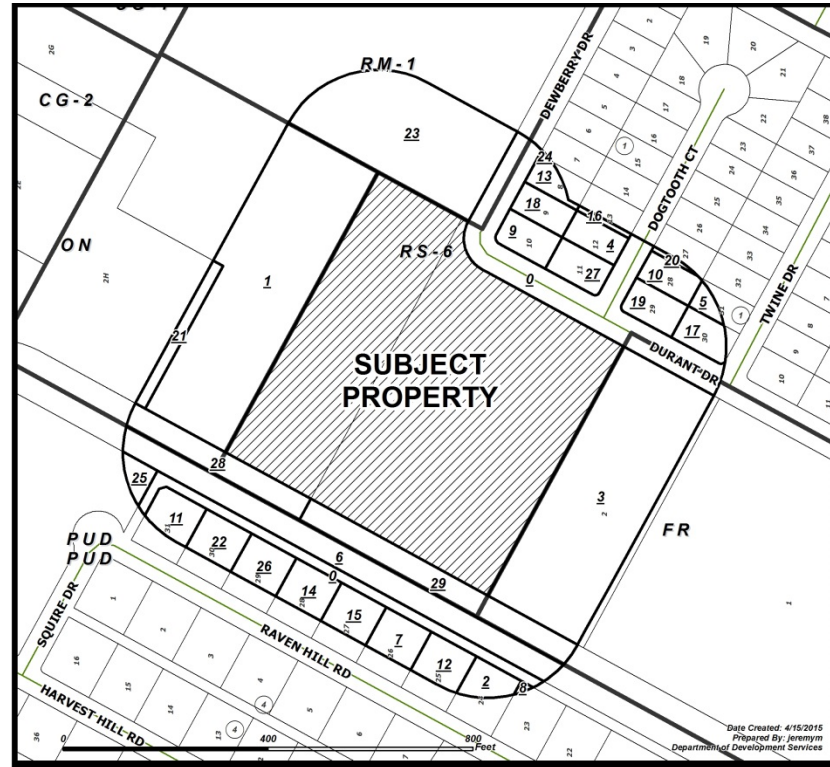
Notification Area



Opposed: 0



In Favor: 0





Staff Recommendation

Denial of the “RM-1” Multifamily 1 District