



Zoning Case #0615-01 N.P. Homes, LLC

From: "RM-1" Multifamily 1 District
To: "CN-1" Neighborhood Commercial District

Planning Commission
Presentation
June 3, 2015

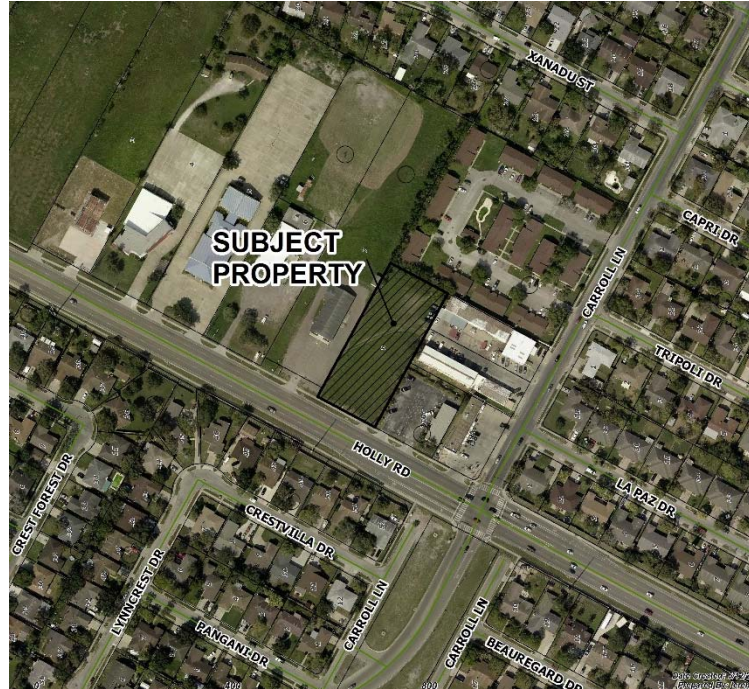


Aerial Overview



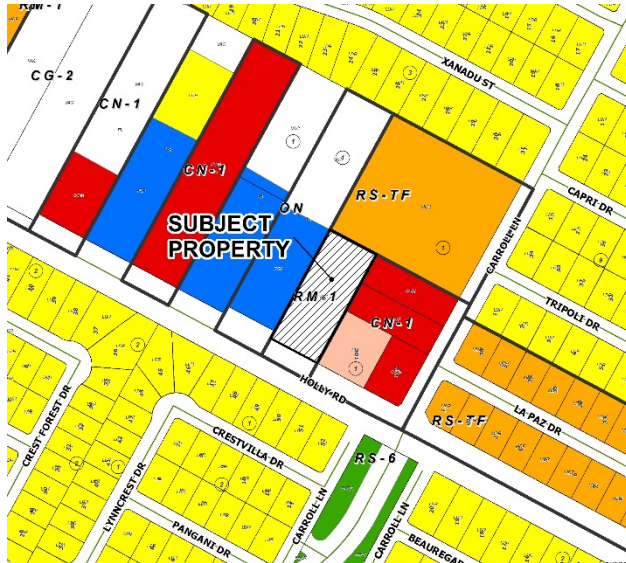


Aerial

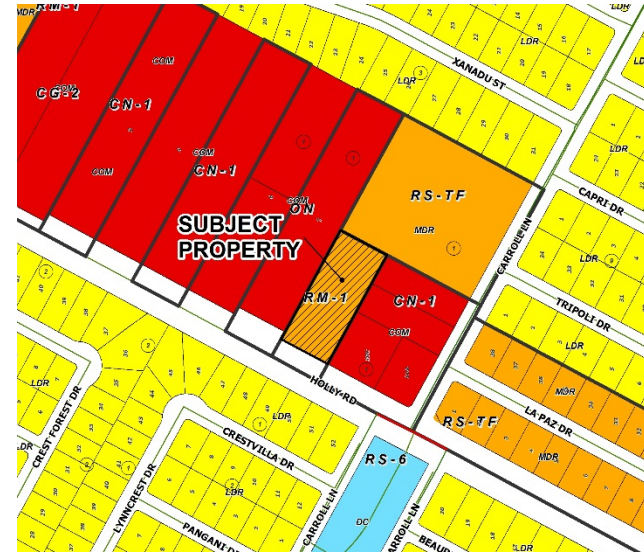




Existing Land Use



Future Land Use



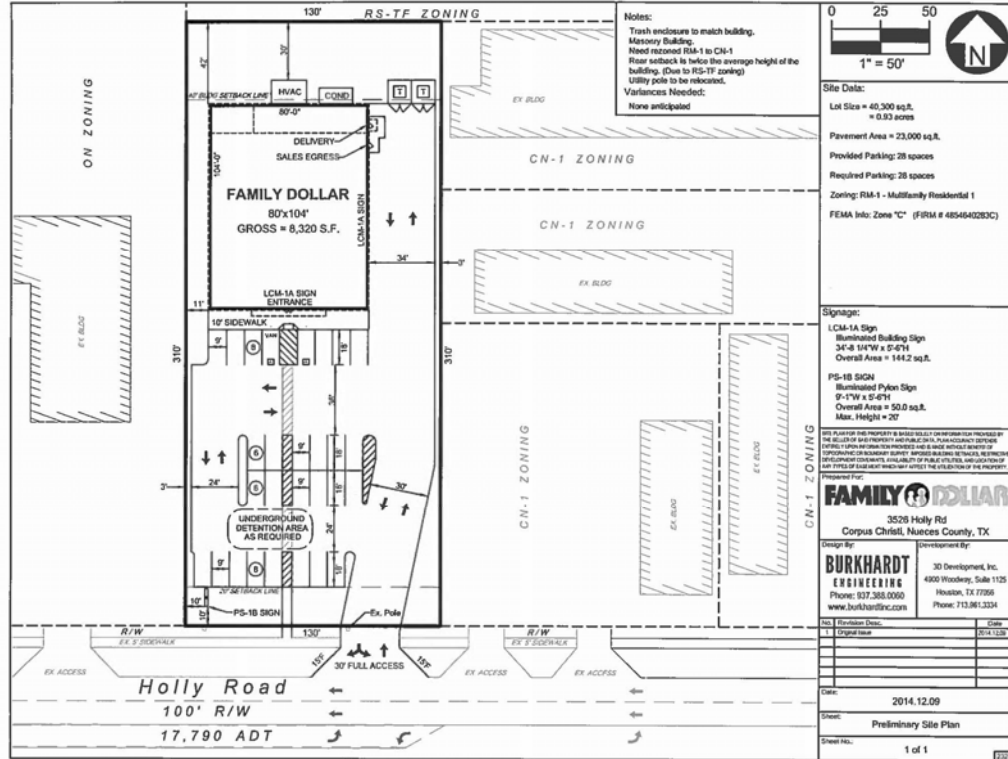


Future Land Use Map





Site Plan





Pictures

Facing North From Holly Road





Pictures

Facing Northeast From Holly Road





Pictures

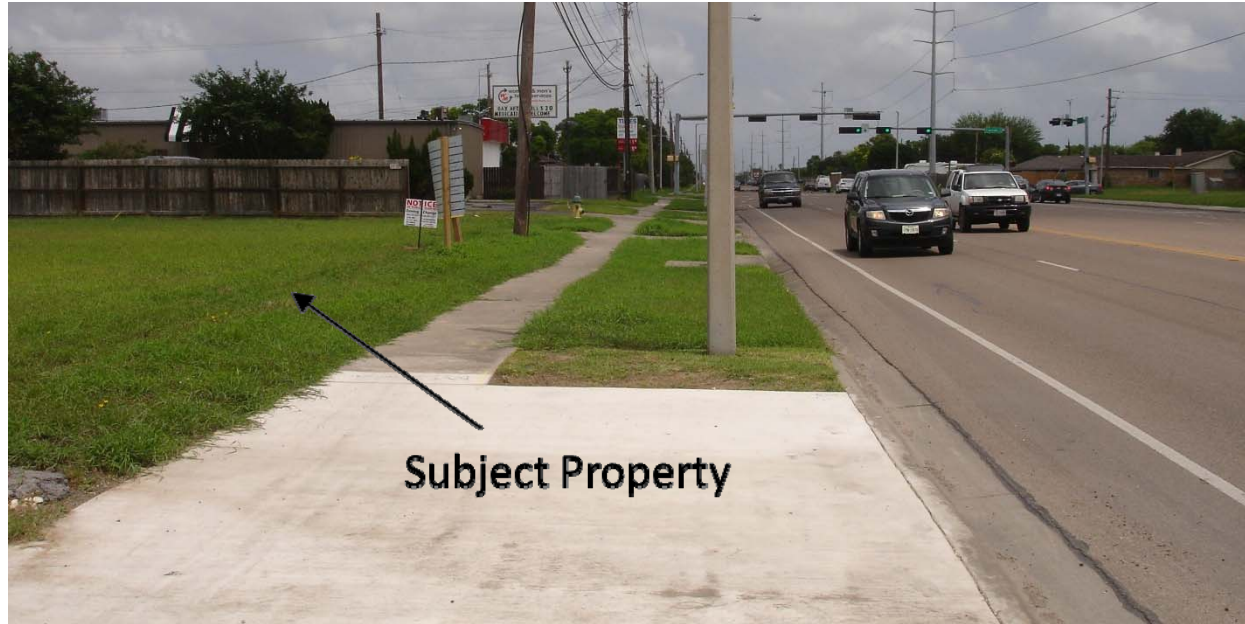
South Across Holly Road From Subject Property





Pictures

Facing East Down Holly Road





Pictures

Facing West Along Holly Road



Subject Property



Public Notification

15 Notices mailed inside 200' buffer
9 Notices mailed outside 200' buffer

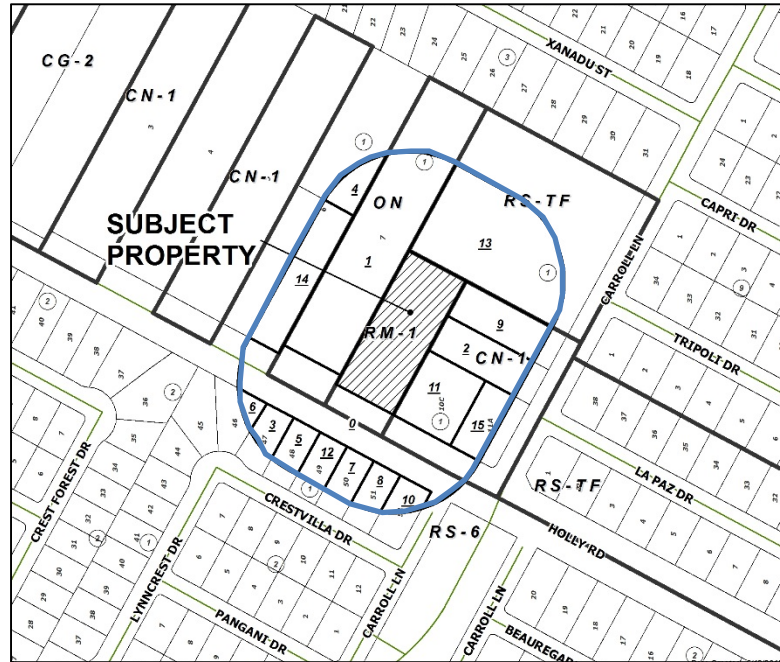
Notification Area



Opposed: 0



In Favor: 0





Staff Recommendation

Approval of the “CN-1” Neighborhood Commercial District