

# Nueces River Pump Station Pipeline and System Upgrades

Nicholas Winkelmann, P.E.  
Director Water Systems and Support Services  
August 12, 2025



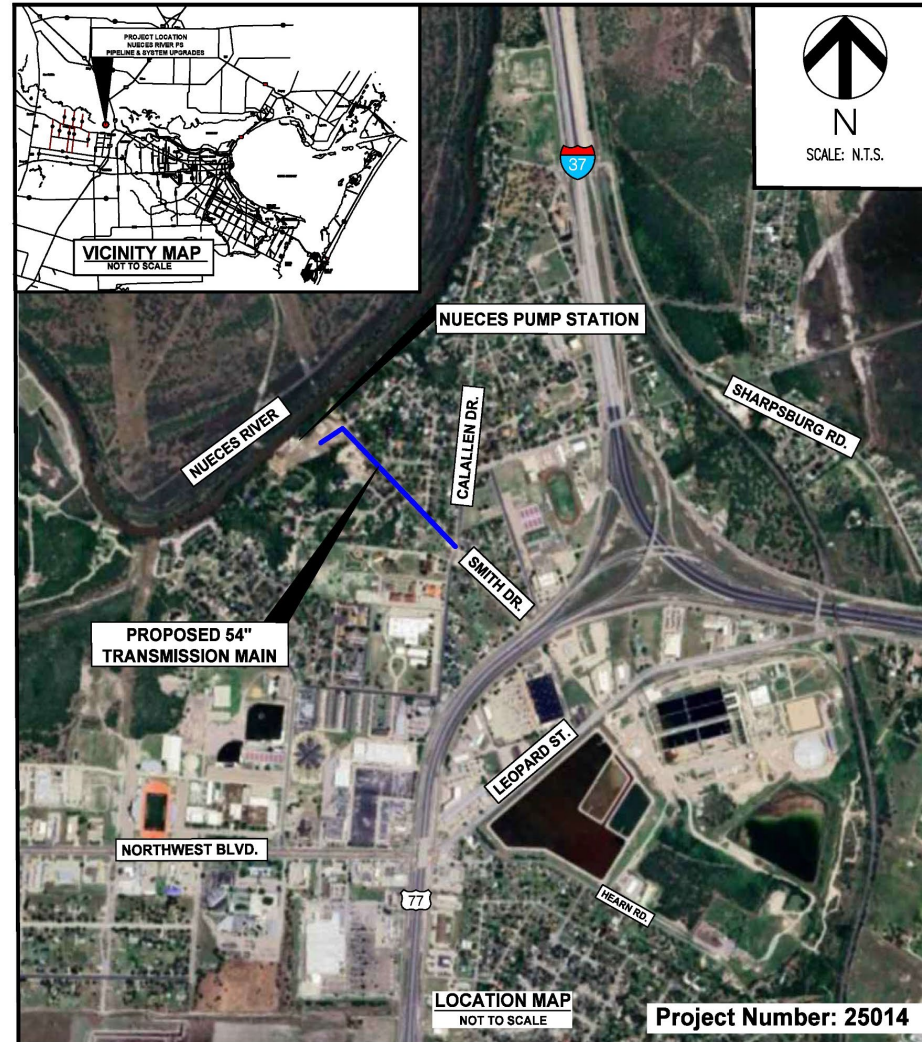
# Background

- The Nueces River Pump Station supplies water from the Nueces River to the O.N. Stevens Water Treatment Plant (ONSWTP) through two 54-inch transmission mains
- The Mary Rhodes Pipeline (MRP) is aligned in the same pipeline corridor with a 72-inch pre-cast cylinder transmission main
- This project is part of a strategic upgrade plan for ONSWTP to improve resiliency and reliability



*Nueces River Pump Station Building 1 and 2*

# Project Location



**NUECES RIVER PUMP STATION  
PIPELINE & SYSTEM UPGRADES**

**CITY COUNCIL EXHIBIT**  
CITY OF CORPUS CHRISTI, TEXAS  
DEPARTMENT OF ENGINEERING SERVICES



# Project Scope

- Hydraulic and transient modeling with modifications to the pump station site piping to improve operational flexibility
  - Will allow for water to be transmitted to ONSWTP from the Nueces River *or* the MRP through varying combinations of the 54-inch and 72-inch transmission mains
- Project will also complete the alignment of the new 54-inch diameter transmission main from Calallen Drive to the Nueces River Pump Station which is approximately 2,400 linear feet
- Slope stabilization
- Stormwater drainage modifications in the pipeline corridor to provide adequate coverage over the transmission mains



# Project Timeline

2025-2026	2026			2027-2028
August - September	O	N	D	January - April
Design	Bid/Award			Construction

Projected schedule reflects City Council award in August 2025 with anticipated construction completion in April 2028.

## Staff Recommendation

Approval of a professional services contract for design, bid, and construction phase services for the Nueces River Pump Station Pipeline and System Upgrades project with LAN, Inc., in the amount not to exceed \$1,540,955.00. The fiscal impact for Corpus Christi Water in FY 2025 is an amount not to exceed \$1,540,955.00 with funding available through the Water Capital Fund.

Four horizontal, wavy bands of blue and cyan colors that span the width of the slide, creating a water-like effect.

Thank you!

