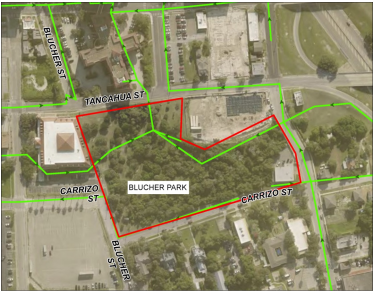


FY 26 thru FY 28

# Capital Improvement Plan

Corpus Christi, Texas



**Project #** 23018  
**Project Name** Blucher Park Wastewater Improvements

<b>Contact</b>	Director of Corpus Christi Water	<b>Department</b>	Wastewater
<b>Type</b>	Improvement/Additions	<b>Category</b>	Wastewater Network
<b>Priority</b>	Priority Level 1	<b>Status</b>	Active
<b>Useful Life</b>	25 years	<b>Council District</b>	1

Description

The wastewater system in the Blucher Park area has been confirmed as a capacity constraint using field data and the wastewater hydraulic model. This project will assess the existing wastewater collection system and a new design will be developed which will significantly modify and upgrade the wastewater infrastructure in this area. The designed improvements will alleviate the capacity constraint(s).

Justification

Successful completion of this project will address a defined capacity constraint as established in the Consent Decree Hydraulic Model. The elimination of this capacity constraint will reduce the potential and likelihood of sanitary sewer overflows (SSO). This project is required to upgrade infrastructure to accommodate wastewater flows and meet the conditions of the consent decree.

Expenditures	Prior	FY 26	FY 27	FY 28	Total
Construction/Rehab	0	0	5,000,000	5,000,000	10,000,000
Design	1,000,000	711,210	0	0	1,711,210
Eng, Admin Reimbursements	100,000	0	250,000	250,000	600,000
Total	1,100,000	711,210	5,250,000	5,250,000	12,311,210

Funding Sources	Prior	FY 26	FY 27	FY 28	Total
Revenue Bonds	1,100,000	711,210	5,250,000	5,250,000	12,311,210
Total	1,100,000	711,210	5,250,000	5,250,000	12,311,210

Budget Impact

This project reduces the potential for fines associated with the consent decree. A reduction in SSO's and I&I will result in a reduction of clean up and maintenance costs.