



# Zoning Case #0714-06 Related Investors, Ltd.

**From:** "FR" Farm Rural District  
**To:** "RS-4.5" Single-Family 4.5 District



Planning Commission  
Presentation  
July 30, 2014



# Aerial Overview



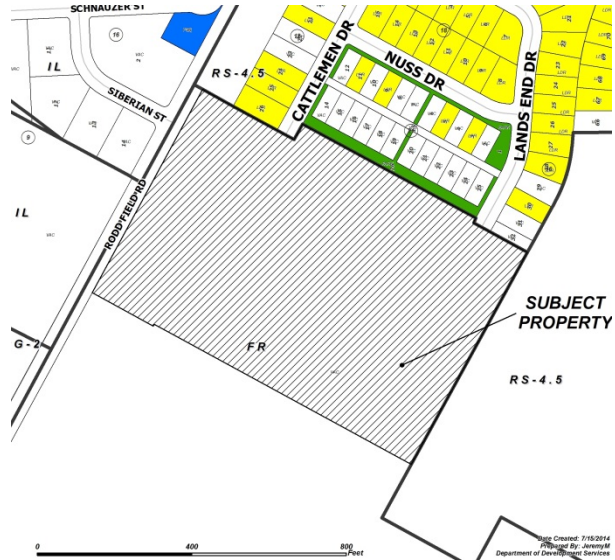


# Aerial

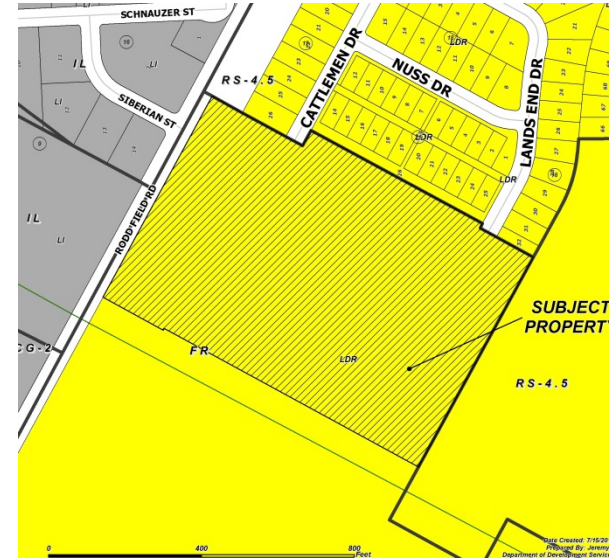





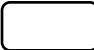



## Existing Land Use



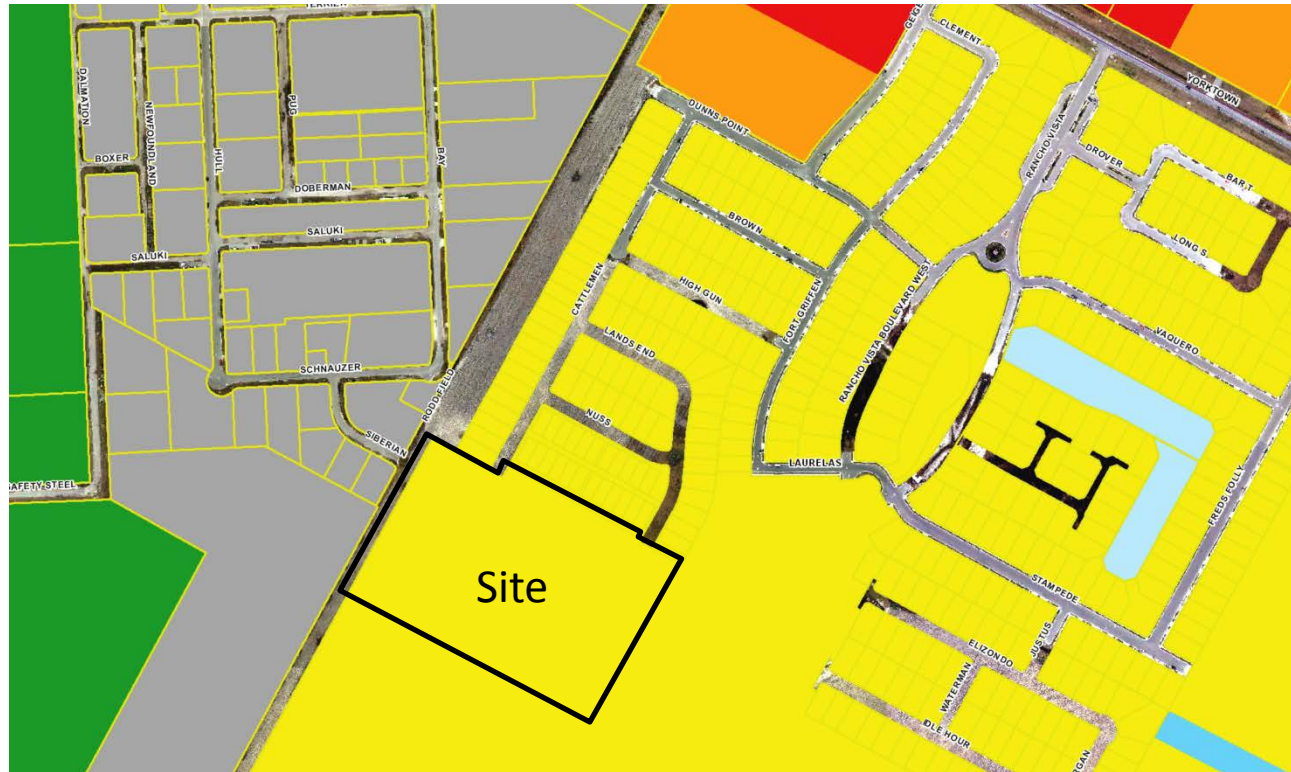
## Future Land Use



-  Park
-  Public/Semi-Public
-  Light Industrial
-  Vacant
-  Low Density Residential



# Future Land Use Map





# Pictures



## North along Cattleman



## Subject Property





# Pictures



Subject Property



West of Subject Property, looking north on future Rodd Field Road





# Public Notification



44 Notices mailed inside 200' buffer  
3 Notice mailed outside 200' buffer

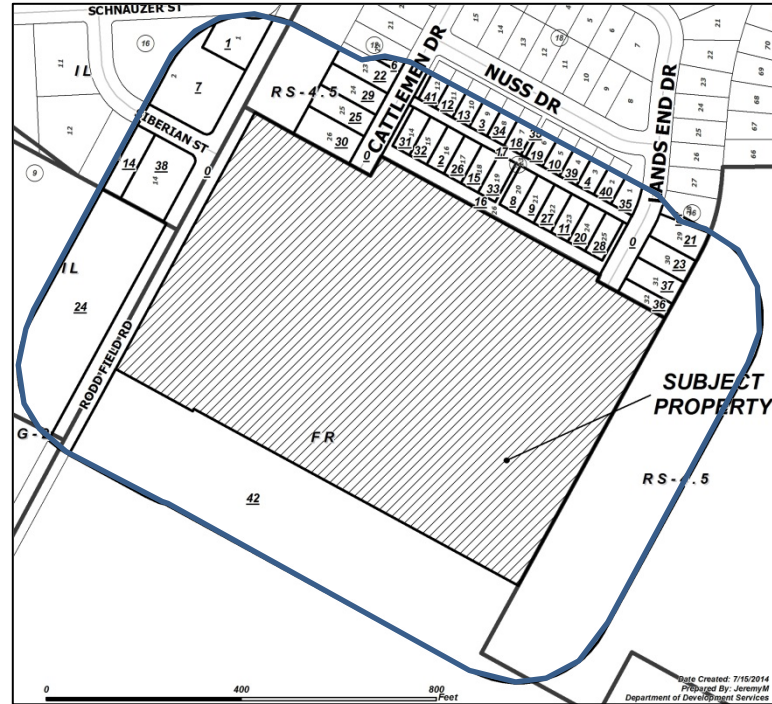
## Notification Area



Opposed:



In Favor:







# Staff Recommendation

---



## **Approval of the** "RS-4.5" Single-Family 4.5 District