

Homeless Recommendations Update

March 27, 2018



Council Briefing
Rudy Bentancourt



Status Update #1 and #4

Recommendation #1 – Coordinated Entry (CE)

- Coordinated Entry – HCD policies and procedures effort with Texas Homeless Network
- CE Policies and Procedures – Approved 3/6
- CE Policies and Procedures transition to HIP for management – 3/9
- The Salvation Army will currently serve as the only CE Entry Point; Participating agencies to be receiving agency

Recommendation #4 – Family Reunification Program

- TSA – Program implemented
-



Status Update #2

Recommendation #2 – Homeless Work Program

- Advisory Council coordination with TAMUCC research methods for class project
 - Task:
 - Research Best Practices (Albuquerque and Ft. Worth)
 - Demystify supportive services
 - Establish a local model with program guidelines
-



Status Update #3

Recommendation #3 – Tiny Homes Pilot Program

- Advisory Council subcommittee has toured Community First Village in Austin, TX on 2/6
 - SkillsUSA April 2018 Competition
 - Create MOU/Agreement
 - Finalize footprint design
 - Establish delivery date
 - Opportunity for future annual coordination/inventory and redesign
 - Collaboration with local students – continue momentum
-



Status Update #3

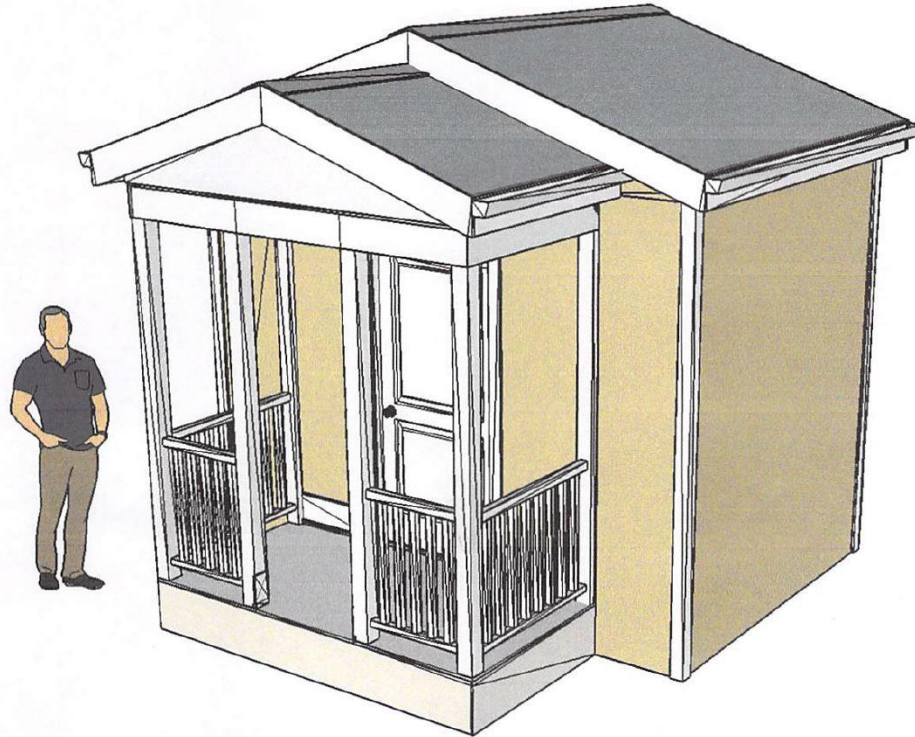
Recommendation #3 – Tiny Homes Pilot Program

Preliminary Criteria

- Chronic Homeless – Veteran Population
 - Ability to pay rent
 - Conditional Entry Program (Homeless Management Information System)
 - One unit for on-site Program Manager
 - One unit for counselors
 - Resident to follow civil laws & rules/regulations of the village
 - Establish vetting process for homeless participants. Assessment for participants (not to be a threat to themselves or others)
 - Furnishings – seeking donations
 - Volunteers needed for garden, walk-ways, shade area, picnic tables, etc.
-

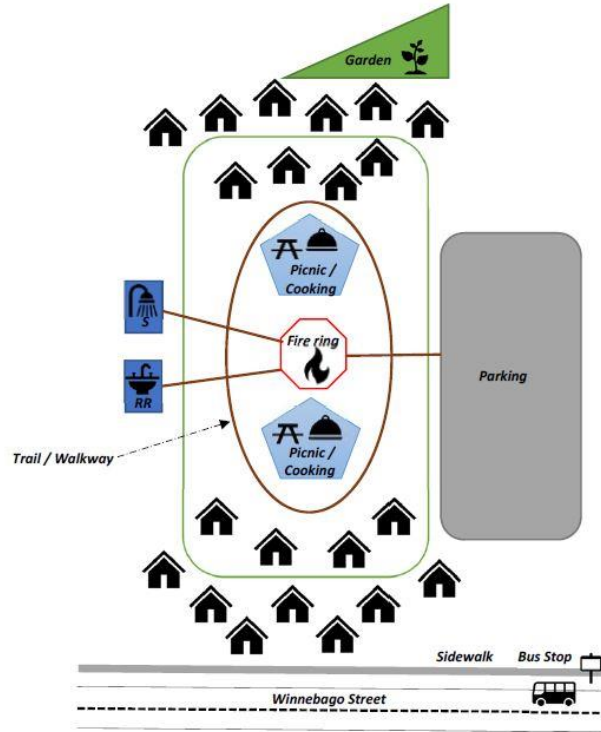


Status Update #3





Status Update #3



02.09.18



Next Steps

**Return to City Council with status update:
June 2018**

- **Short term storage**
- **Identify Land**
- **Identify Restroom/Shower Facilities**

Thank You



QUESTIONS?