



---

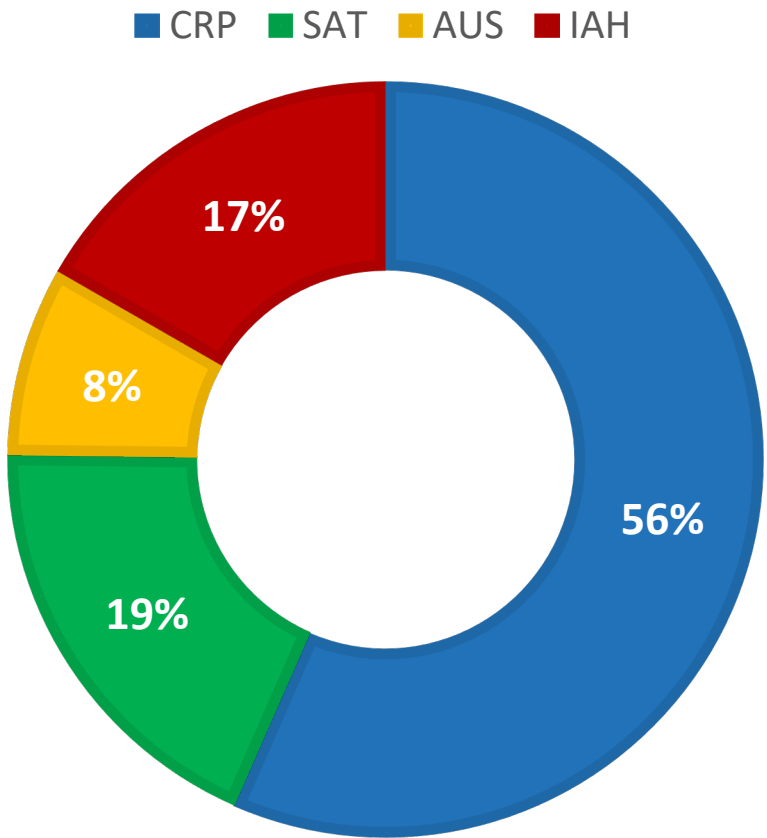
# **Corpus Christi International Airport (CRP)**

## **Air Service Update**

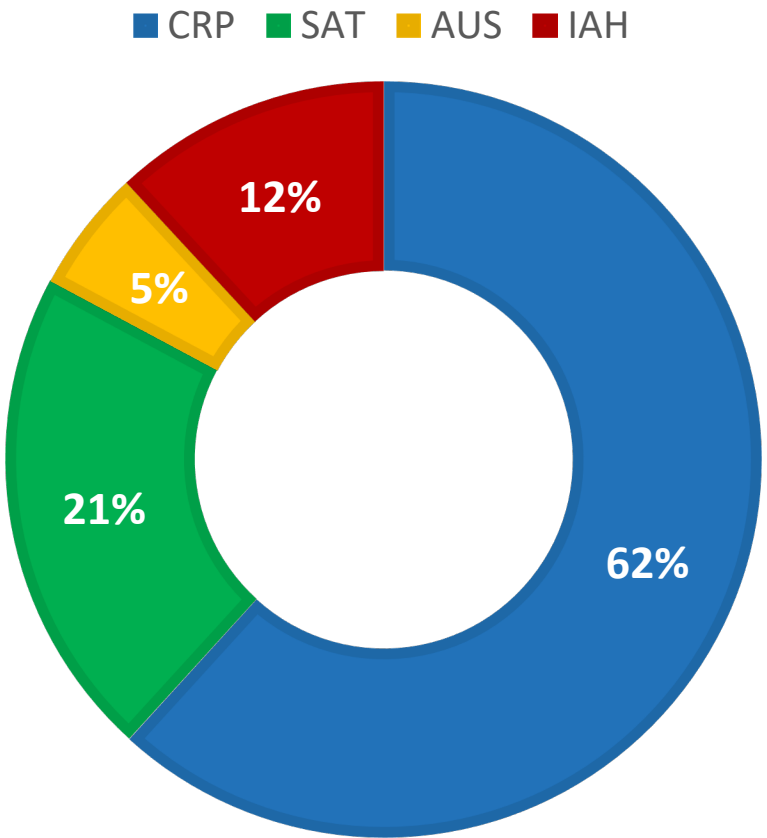
### **September 2022**

# CRP Market Retention

AIRPORT OF ORIGIN  
AUGUST 2022 (WITHIN 45 MILES)



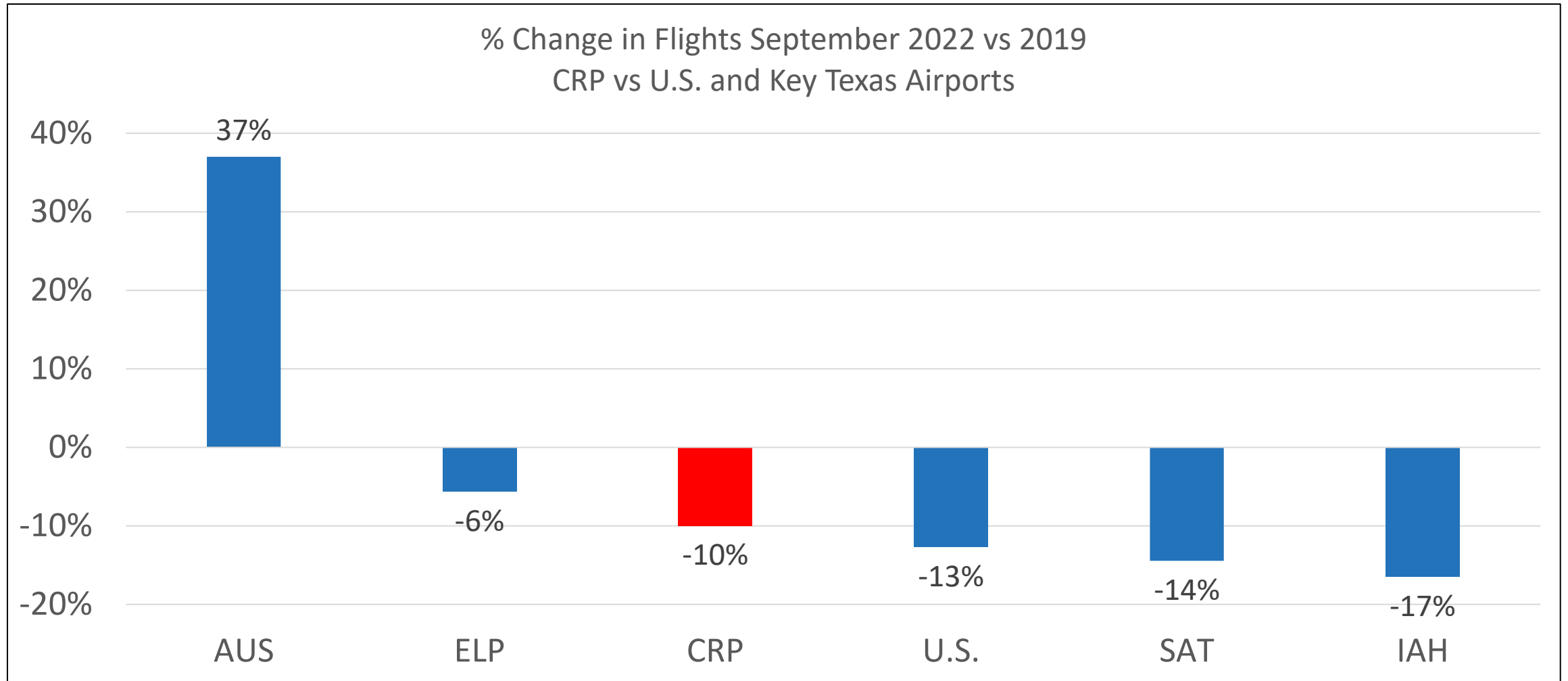
AIRPORT OF ORIGIN  
AUGUST 2021 (WITHIN 45 MILES)



# Latest schedule load pulls CRP capacity down this fall – like many airports across the U.S.

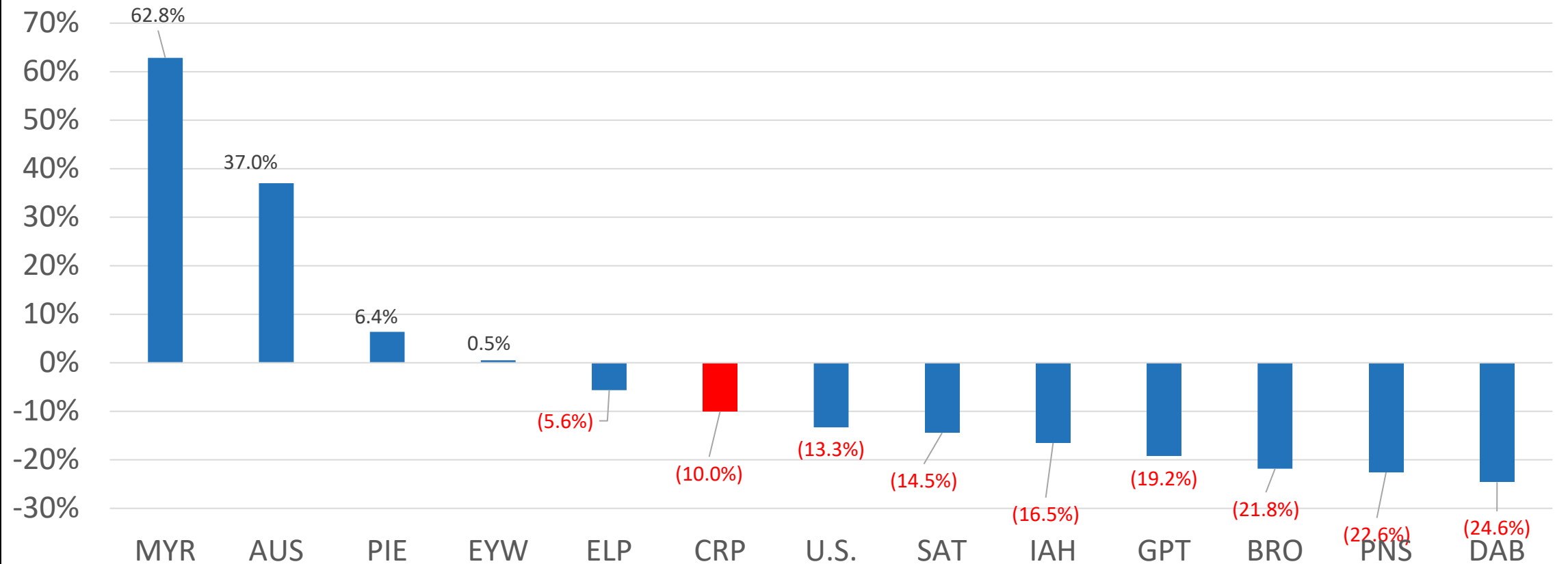
Destination	Airline	Change from 2019 - Monthly Flights and Seats													
		Oct 2022			Nov 2022			Dec 2022			Jan 2023			Feb 2023	
		Flights	Seats		Flights	Seats		Flights	Seats		Flights	Seats		Flights	Seats
Percent Difference															
Dallas/Fort Worth, TX (DFW)	American	(22.6%)	(14.4%)		(33.9%)	(26.8%)		(11.0%)	(8.5%)		42.5%	40.3%		28.7%	26.7%
Houston-Intercontinental, TX (IAH)	United	4.5%	(12.9%)		(13.7%)	(12.3%)		(43.4%)	(45.7%)		13.2%	(15.0%)		5.3%	(21.6%)
Houston-Hobby, TX (HOU)	Southwest	(6.0%)	7.1%		27.8%	38.7%		26.6%	36.1%		(2.6%)	5.6%		(13.0%)	(5.3%)
Total		(10.6%)	(7.0%)		(16.1%)	(2.2%)		(17.5%)	(5.9%)		20.6%	11.1%		9.8%	0.5%

# CRP relative September cuts are generally similar to other regional airports



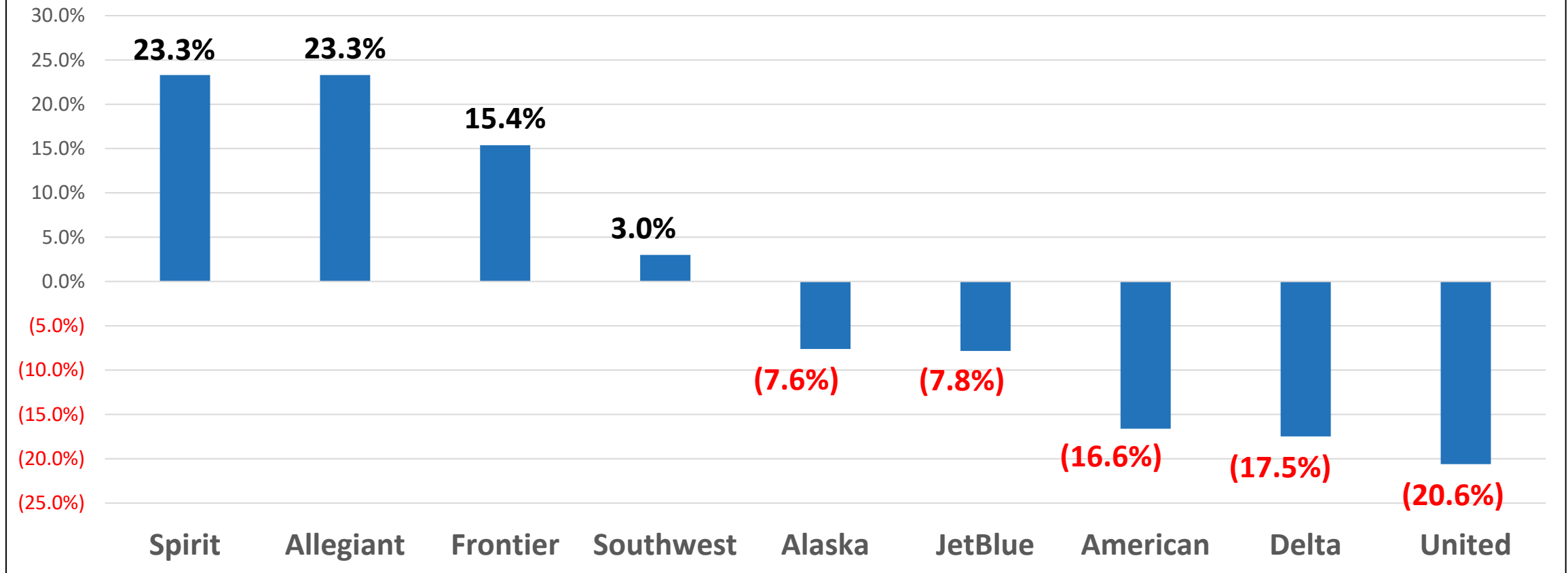
# CRP is comparable to most other regional airports but destination markets outperform

% Change in Flights: September 2022 vs 2019  
CRP vs Selected U.S. Airports



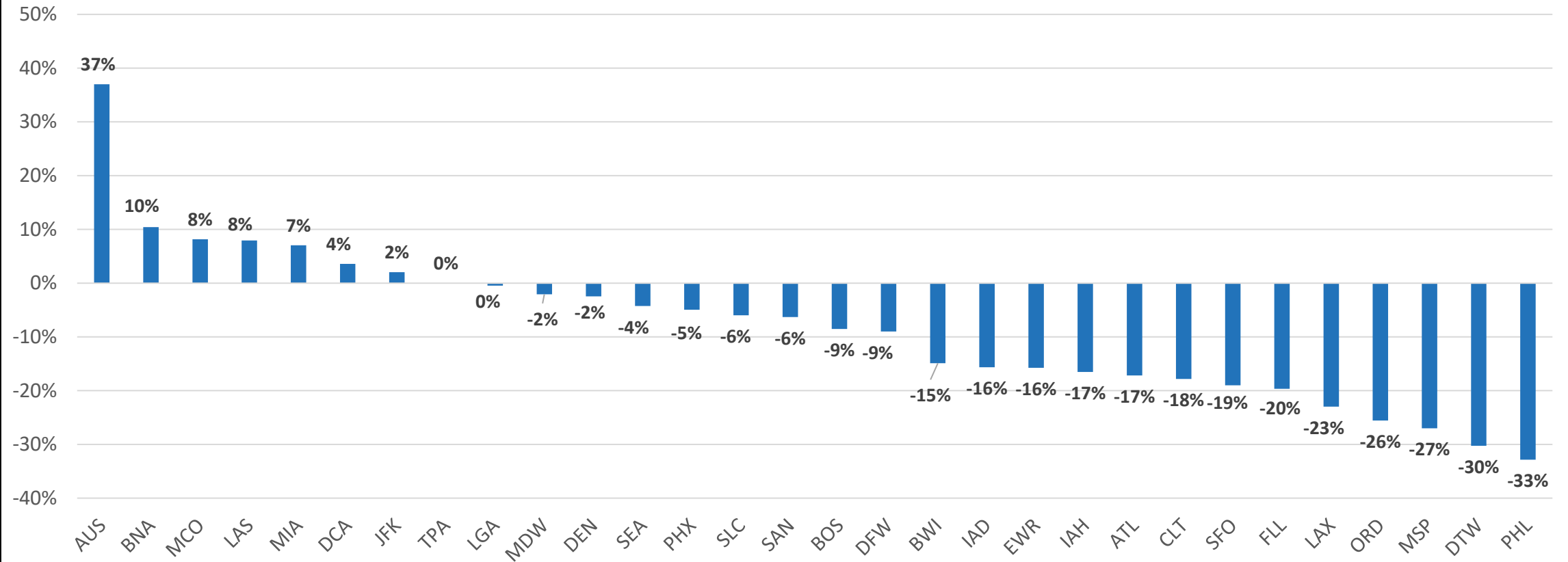
# ULCCs continue to be more aggressive with capacity

September 2022 vs 2019: % Change in Flights  
Top U.S. Airlines



# Top 30 U.S. Airports seat capacity change: September 2022 vs 2019

September 2022 vs 2019: % Change in Flights  
Top 30 U.S. Airports



# Corpus Christi MSA: Total Nonfarm Payrolls (in 000s)

Corpus Christi MSA: Number of Employed People (in 000s)

