

# U.S. Department of Transportation Reconnecting Communities Pilot Grant Application



City Council Presentation  
October 11, 2022



# Grant Information

---

The Reconnecting Communities Pilot Grant Program is the first-ever Federal program dedicated to reconnecting communities that were previously cut off from economic opportunities by transportation infrastructure.

RCP Program's goal is to advance community-supported projects with a priority of economically disadvantaged communities to improve access to daily destinations such as jobs, schools, healthcare, grocery stores, and recreation.

Funding supports planning grants and capital construction grants, and technical assistance to restore community connectivity through the removal, retrofit, mitigation, or replacement of eligible transportation infrastructure facilities.

Eligible facilities include highways, including a road, street, or parkway or other transportation facilities that creates a barrier to community connectivity.

---



# Grant Information

---

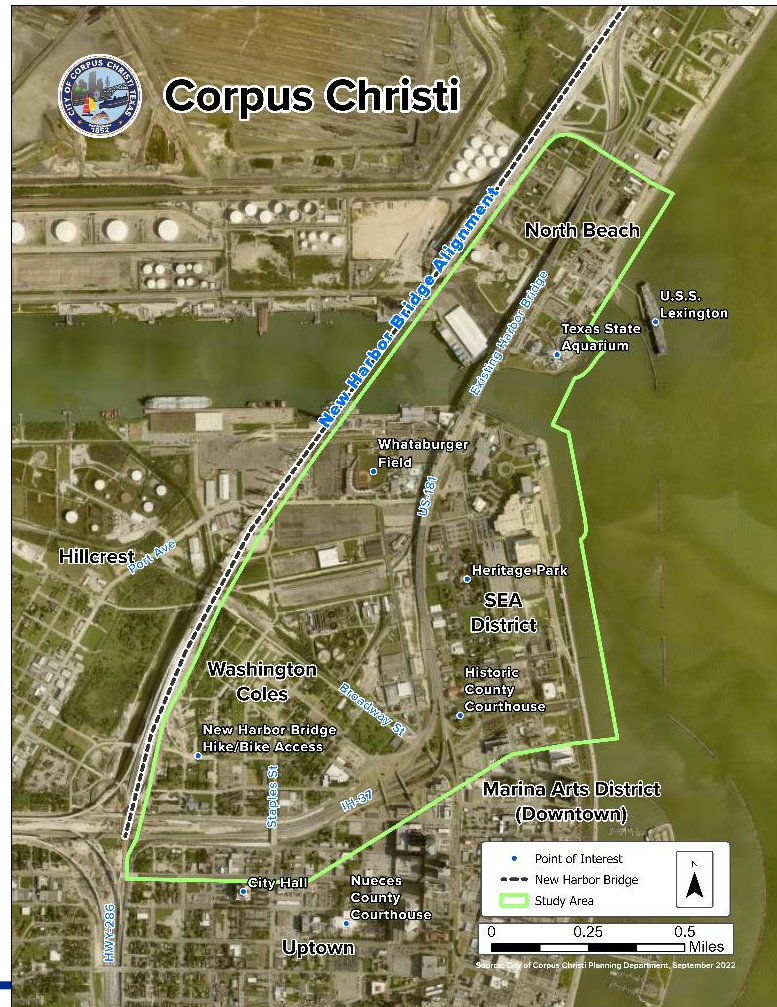
Planning grants may be used to study the feasibility and impacts of removing, retrofitting, or mitigating an existing eligible facility or to conduct planning activities necessary to design a project to remove, retrofit, or mitigate an existing eligible facility. Eligible planning activities include:

- Planning studies of current traffic patterns on the eligible facility proposed for removal, retrofit, or mitigation and the surrounding street network; transportation network capacity; alternative roadway designs or other uses for the right-of-way; impacts to the mobility of freight and people; impacts to the safety of the traveling public; cost; anticipated economic impacts and environmental impacts both human and natural.
- Public engagement activities to provide the public opportunities to provide input into a plan to remove and convert an eligible facility.
- Other transportation planning activities required in advance of a project to remove, retrofit, or mitigate an existing eligible facility to restore community connectivity, as determined by DOT.



## Project Application:

- Developing preliminary engineering designs and cost estimates
- Creating construction project phasing timeline aligned with Harbor Bridge Project
- Design and pilot-programs with community to promote equitable access to wealth-creating neighborhood revitalization
- Emphasis on community and stakeholder participation and partnerships
- Assessing feasibility of Staples Street extension





---

Questions?