


**CITY OF CORPUS CHRISTI
OFFICE OF THE CITY MANAGER**

TO: Peter Zaroni, City Manager
FROM: Neiman Young, PhD., Assistant City Manager
COPY: Mayor and City Council
SUBJECT: Regional Parkway and Secondary Access to The Island
DATE: November 29, 2022



Background

KRIS-6 recently noted an upcoming meeting between TxDOT and North Padre Island community members. The purpose of the meeting will be to discuss the resident's concerns for a second crossing between the mainland of Corpus Christi and the Island.

The meeting was generated out of a request from Ted Mandel (an Island resident) to Chairman Todd Hunter. Chairman Hunter's office intends to first attend a meeting with Island residents and then host a second meeting with TxDOT. According to his office, Chairman Hunter desires to take the lead on having the Island second crossing project added to the State's 10-year transportation plan.

In addition to the Chairman's efforts, the City has worked with multiple partners on this matter. This has included participation with the Corpus Christi MPO on multiple studies to address this concern.

South Loop Transportation Study/ Regional Parkway Mobility Corridor Feasibility Study

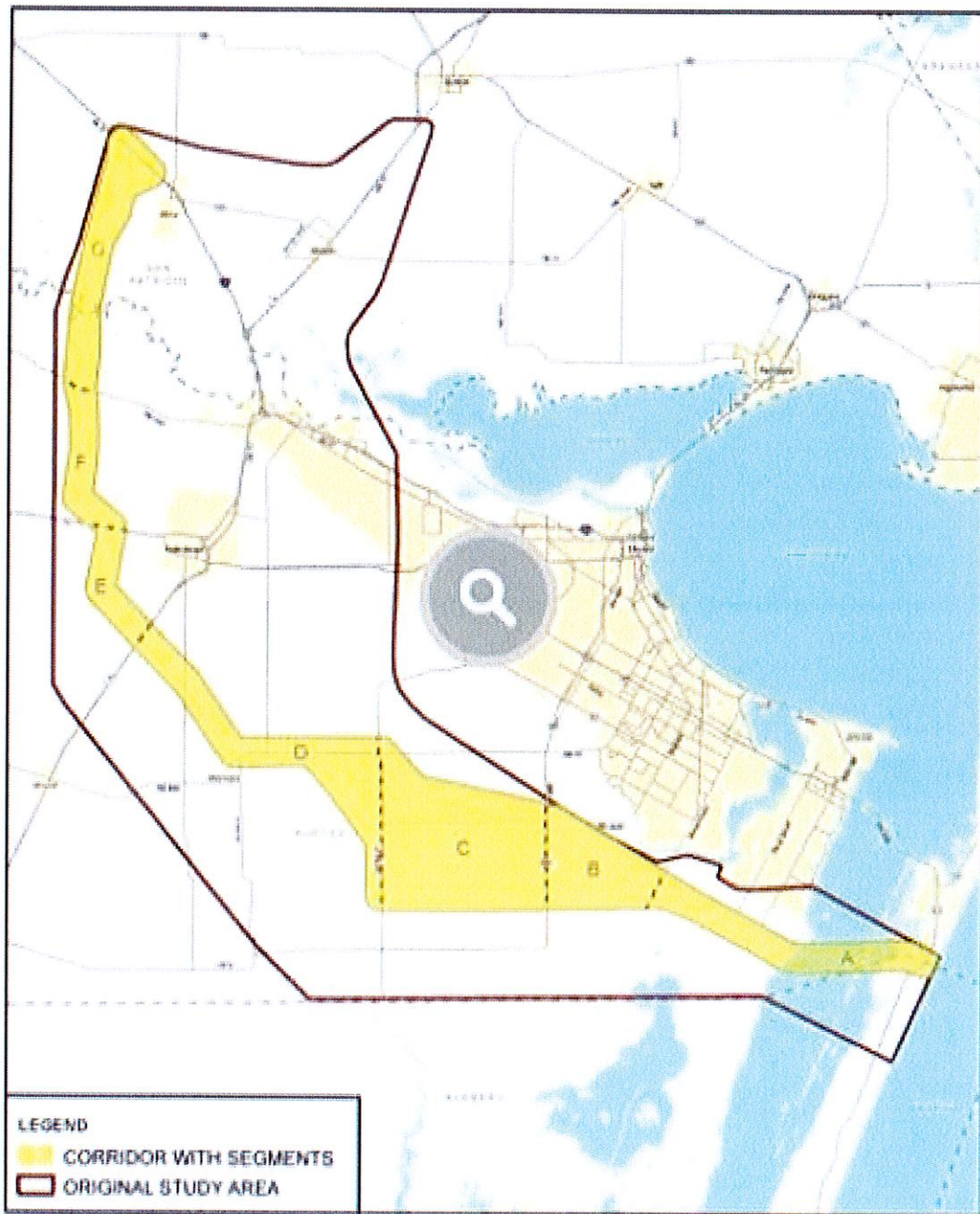
The Corpus Christi MPO began looking at a possible second crossing to North Padre Island with the South Loop Transportation Study, which was completed in 1999. The study recommended a new south loop which would relieve congestion and provide for a second entrance into the Island. The recommended route was from US 77 north of Odem, proceeding south of the City of Corpus Christi, and then east out to North Padre Island.

To further refine the work done within the South Loop Transportation Study, the MPO (with the coordination of the City of Corpus Christi, Nueces County, and San Patricio County) commissioned the Regional Parkway Mobility Corridor Feasibility Study, published in 2013. The purpose of the study was threefold:

- Reduce congestion and facilitate regional mobility, connectivity, and system linkages;

- Accommodate potential economic and population growth and address safety issues; and
- Provide an alternate hurricane evacuation route.

The study utilized an alternative evaluation approach to narrow down the 52-mile corridor identified in South Loop Transportation study and divided it into seven (7) segments identified A through G, with segment A being the second crossing out to N. Padre Island.



The Regional Parkway Planning and Environmental Linkages (PEL) Study

The third and most recent study was the Regional Parkway Planning and Environmental Linkages (PEL) Study, published in 2017. The purpose of this study was to further refine transportation needs and simplify the planning process by focusing on the alignment of Segments A and B identified in Regional Parkway Mobility Corridor Feasibility Study only.

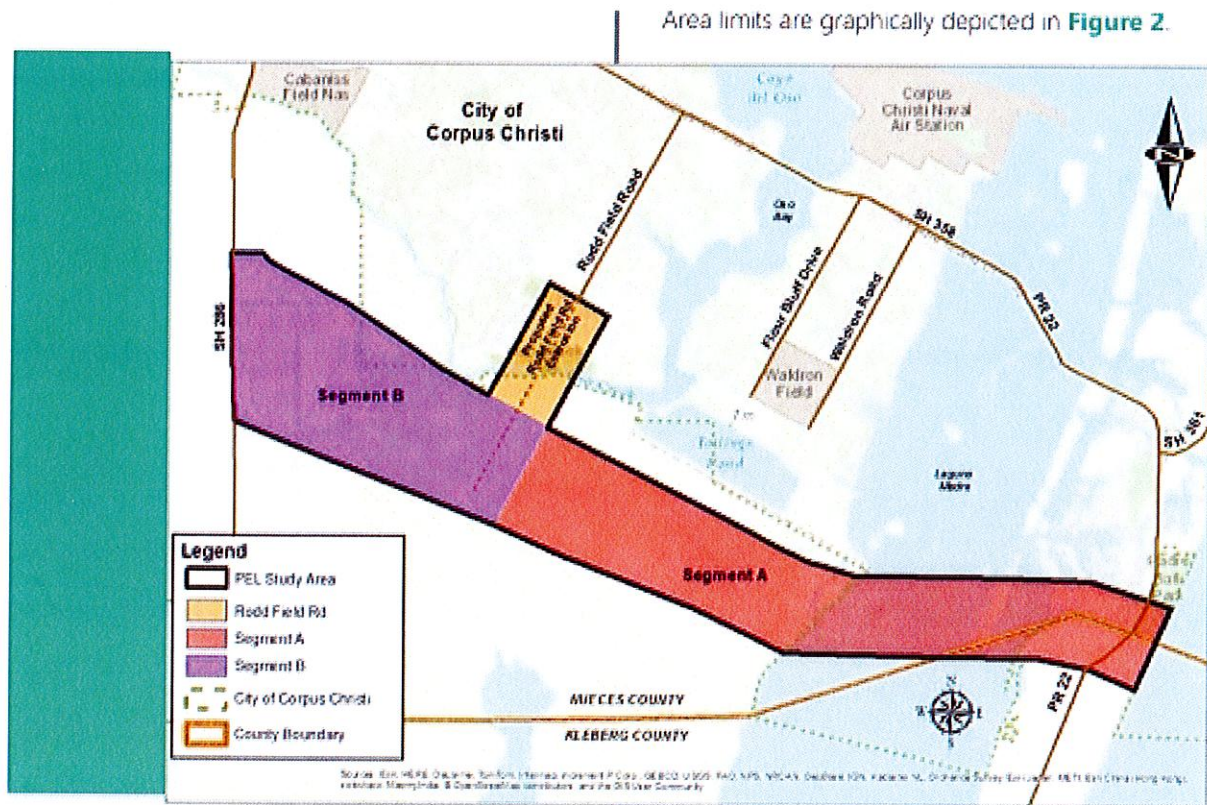
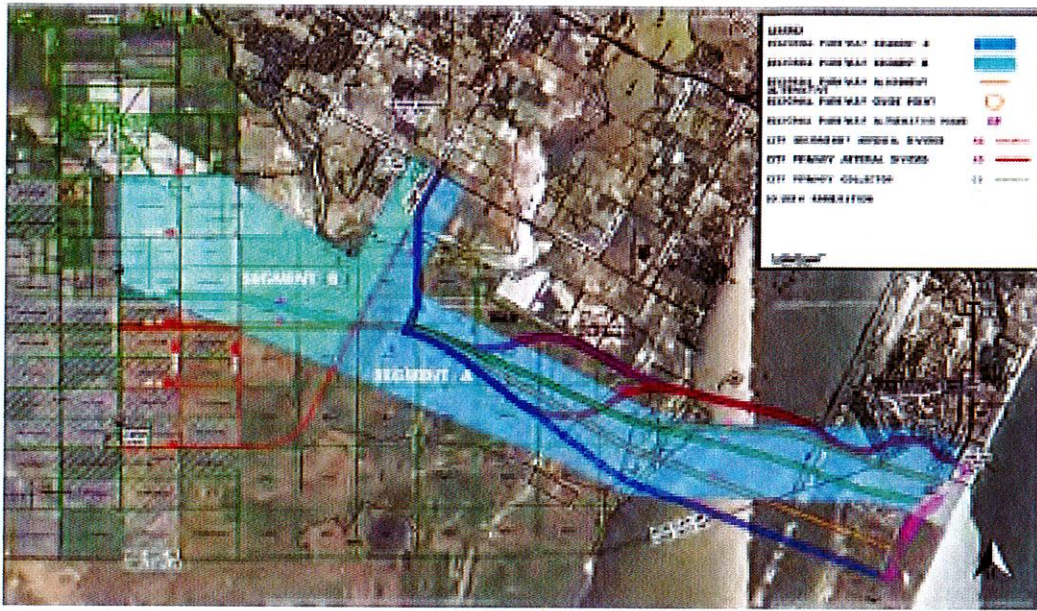


Figure 2. Regional Parkway PEL Study Area

2-3

In total, eight (8) alternative routes were considered in Segment A (Island Crossing), four (4) in Segment B (SH 286 to future Rodd Field Rd.), and three (3) for Rodd Field Road before selecting the preferred routing.



The preferred alternative of the proposed PEL routes was then adopted into the City of Corpus Christi Urban Transportation Plan.

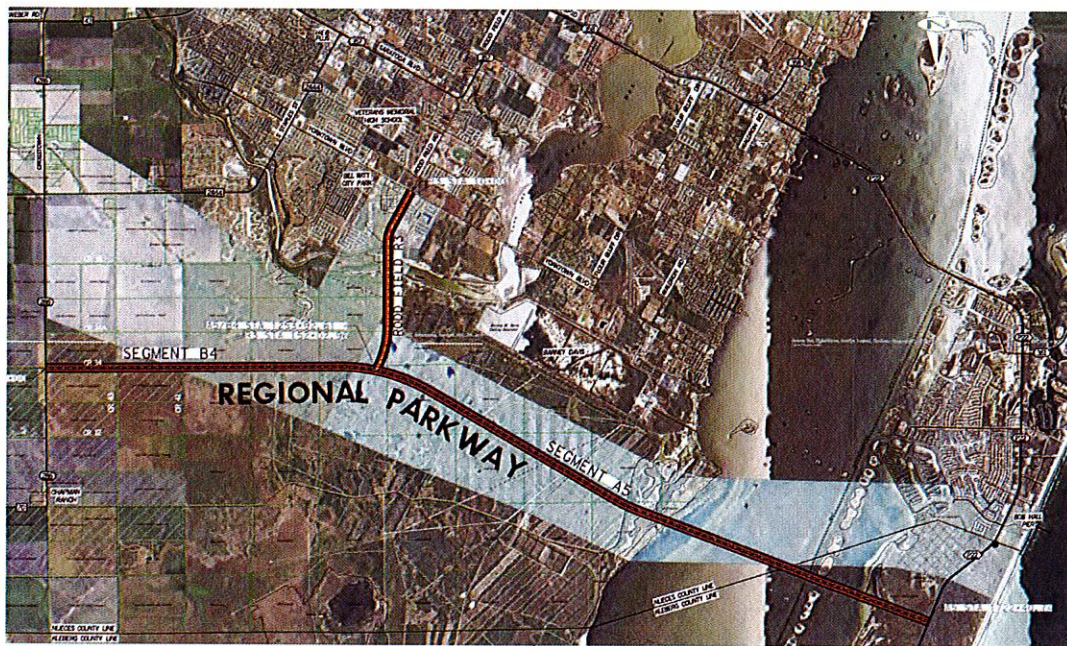


Figure 8: Recommended Regional Parkway - Segment A5, B4 and R3

The next step to move forward with the PEL would be to start the required National Environmental Policy Act (NEPA) process. The adopted Metropolitan Transportation Plan (MTP) 2020-2045 identifies the NEPA process for Segment B and Rodd Field Rd. extension (estimated cost of \$2.27 million) along with construction (estimated cost of \$84 million) beyond the 10- Year planning horizon. The NEPA process and construction of Segment A are identified within the MTP but are on the unfunded needs list.