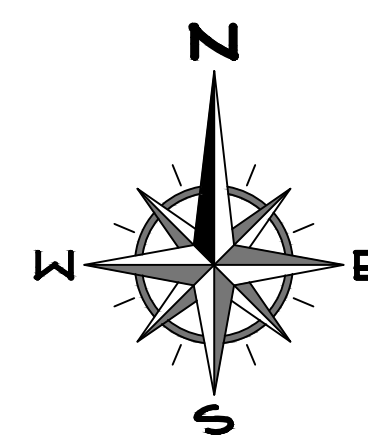


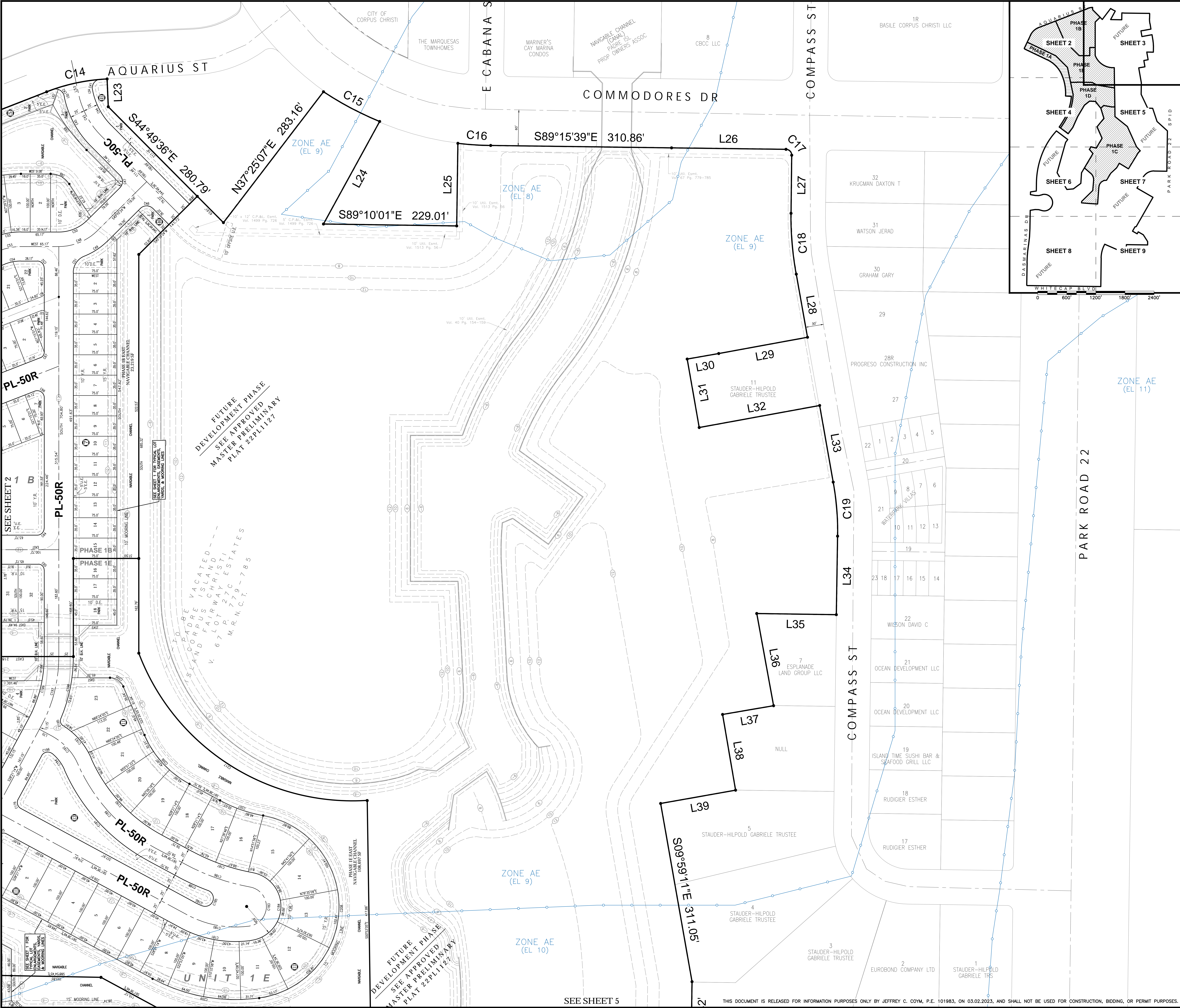
LOT AREAS					LOT AREAS					LOT AREAS					LOT AREAS					LOT AREAS						
BK	LOT	SF	BK	LOT	SF	BK	LOT	SF	BK	LOT	SF	BK	LOT	SF	BK	LOT	SF	BK	LOT	SF	BK	LOT	SF	BK	LOT	SF
1	PARK	5,644	4	1	PARK	13,835	8	13	2,662	15	12	13	5,600	15	12	13	5,600	15	12	13	5,600	15	12	13	5,600	
2	PARK	6,805	4	2	PARK	17,219	8	14	2,625	15	13	14	5,600	15	13	14	5,600	15	13	14	5,600	15	13	14	5,600	
3	5,000	4	3	1	PARK	2,459	8	15	2,625	15	14	15	5,600	15	14	15	5,600	15	14	15	5,600	15	14	15	5,600	
4	5,000	4	4	2	PARK	17,219	8	16	2,625	15	15	16	5,600	15	15	16	5,600	15	15	16	5,600	15	15	16	5,600	
5	5,000	4	5	3	PARK	10,772	8	17	2,625	15	16	17	5,600	15	16	17	5,600	15	16	17	5,600	15	16	17	5,600	
6	5,000	4	6	4	2,000	4,392	8	18	2,625	15	17	18	5,600	15	17	18	5,600	15	17	18	5,600	15	17	18	5,600	
7	5,000	4	7	5	3,500	5,000	8	19	2,625	15	18	19	5,600	15	18	19	5,600	15	18	19	5,600	15	18	19	5,600	
8	5,000	4	8	6	3,891	5,000	8	20	2,625	15	19	20	5,600	15	19	20	5,600	15	19	20	5,600	15	19	20	5,600	
9	5,000	4	9	7	4,200	5,000	8	21	2,656	15	20	21	5,511	15	20	21	5,511	15	20	21	5,511	15	20	21	5,511	
10	5,000	4	10	8	3,500	5,000	8	22	2,656	15	21	22	6,089	15	21	22	6,089	15	21	22	6,089	15	21	22	6,089	
11	5,000	4	11	9	3,500	5,000	8	23	2,656	15	22	23	5,689	15	22	23	5,689	15	22	23	5,689	15	22	23	5,689	
12	5,163	4	12	10	3,500	5,000	8	24	2,656	15	23	24	5,689	15	23	24	5,689	15	23	24	5,689	15	23	24	5,689	
13	5,453	4	13	11	3,500	5,000	8	25	2,656	15	24	25	5,677	15	24	25	5,677	15	24	25	5,677	15	24	25	5,677	
14	5,516	4	14	12	3,500	5,000	8	26	2,656	15	25	26	5,650	15	25	26	5,650	15	25	26	5,650	15	25	26	5,650	
15	5,581	4	15	13	3,500	5,000	8	27	2,656	15	26	27	5,650	15	26	27	5,650	15	26	27	5,650	15	26	27	5,650	
16	5,646	4	16	14	3,500	5,000	8	28	2,656	15	27	28	5,650	15	27	28	5,650	15	27	28	5,650	15	27	28	5,650	
17	5,771	4	17	15	3,500	5,000	8	29	2,656	15	28	29	5,650	15	28	29	5,650	15	28	29	5,650	15	28	29	5,650	
18	6,144	4	18	16	3,500	5,000	8	30	2,656	15	29	30	5,650	15	29	30	5,650	15	29	30	5,650	15	29	30	5,650	
19	6,891	4	19	17	3,500	5,000	8	31	2,656	15	30	31	5,650	15	30	31	5,650	15	30	31	5,650	15	30	31	5,650	
20	6,854	4	20	18	3,500	5,000	8	32	2,656	15	31	32	5,650	15	31	32	5,650	15	31	32	5,650	15	31	32	5,650	
21	6,369	4	21	19	3,500	5,000	8	33	2,656	15	32	33	5,650	15	32	33	5,650	15	32	33	5,650	15	32	33	5,650	
22	4,590	4	22	20	3,500	5,000	8	34	2,656	15	33	34	5,650	15	33	34	5,650	15	33	34	5,650	15	33	34	5,650	
23	6,373	4	23	21	3,500	5,000	8	35	2,656	15	34	35	5,650	15	34	35	5,650	15	34	35	5,650	15	34	35	5,650	
24	6,549	4	24	22	3,500	5,000	8	36	2,656	15	35	36	5,650	15	35	36	5,650	15	35	36	5,650	15	35	36	5,650	
25	6,545	4	25	23	3,500	5,000	8	37	2,656	15	36	37	5,650	15	36	37	5,650	15	36	37	5,650	15	36	37	5,650	
26	PARK	17,904	4	24	10,020	5,000	8	38	2,656	15	37	38	5,650	15	37	38	5,650	15	37	38	5,650	15	37	38	5,650	
27	PARK	13,191	4	25	3,280	5,000	8	39	2,656	15	38	39	5,650	15	38	39	5,650	15	38	39	5,650	15	38	39	5,650	
28	PARK	2,860	4	26	3,171	5,000	8	40	2,656	15	39	40	5,650	15	39	40	5,650	15	39	40	5,650	15	39	40	5,650	
29	4,564	4	29	24	3,062	5,000	8	41	2,656	15	40	41	5,650	15	40	41	5,650	15	40	41	5,650	15	40	41	5,650	
30	4,841	4	30	25	2,952	5,000	8	42	2,656	15	41	42	5,650	15	41	42	5,650	15	41	42	5,650	15	41	42	5,650	
31	4,841	4	31	26	3,041	5,000	8	43	2,656	15	42	43	5,650	15	42	43	5,650	15	42	43	5,650	15	42	43	5,650	
32	4,841	4	32	27	3,303	5,000	8	44	2,656	15	43	44	5,650	15	43	44	5,650	15	43	44	5,650	15	43	44	5,650	
33	4,841	4	33	28	3,688	5,000	8	45	2,656	15	44	45	5,650	15	44	45	5,650	15	44	45	5,650	15	44	45	5,650	
34	4,600	4	34	29	4,004	5,000	8	46	2,656	15	45	46	5,650	15	45	46	5,650	15	45	46	5,650	15	45	46	5,650	
35	4,500	4	35	30	3,960	5,000	8	47	2,656	15	46	47	5,650	15	46	47	5,650	15	46	47	5,650	15	46	47	5,650	
36	4,500	4	36	31	3,565	5,000	8	48	2,656	15	47	48	5,650	15	47	48	5,650	15	47	48	5,650	15	47	48	5,650	
37	4,500	4	37	32	4,479	5,000	8	49	2,656	15	48	49	5,650	15	48	49	5,650	15	48	49	5,650	15	48	49	5,650	
38	4,601	4	38	33	3,015	5,000	8	50	2,656	15	49	50	5,650	15	49	50	5,650	15	49	50	5,650	15	49	50	5,650	
39	9,854	4	39	34	2,625	5,000	8	51	2,656	15	50	51	5,650	15	50	51	5,650	15	50	51	5,650	15	50	51	5,650	
40	4,765	4	40	35	2,625	5,000	8	52	2,656	15	51	52	5,650	15	51	52	5,650	15	51	52	5,650	15	51	52	5,650	
41	4,500	4	41	36	2,625	5,000	8	53	2,656	15	52	53	5,650	15	52	53	5,650	15	52	53	5,650	15	52	53	5,650	
42	4,500	4	42	37	2,625	5,000	8	54	2,656	15	53	54	5,650	15	53	54	5,650	15	53	54	5,650	15	53	54	5,650	
43	4,500	4	43	38	2,625	5,000	8	55	2,656	15	54	55	5,650	15	54	55	5,650	15	54	55	5,650	15	54	55	5,650	
44	4,500	4	44	39	2,625	5,000	8	56	2,656	15	55	56	5,650	15	55	56	5,650	15	55	56	5,650	15	55	56	5,650	
45	4,500	4	45	40	2,625	5,000	8	57	2,656	15	56	57	5,650	15	56	57	5,650	15	56	57	5,650	15	56	57	5,650	
46	4,500	4	46	41	2,625	5,000	8	58	2,656	15	57	58	5,650	15	57	58	5,650	15	57	58	5,650	15	57	58	5,650	
47	4,500	4	47	42	2,625	5,000	8	59	2,656	15	58	59	5,650	15	58	59	5,650	15	58	59	5,650	15	58	59	5,650	
48	4,500	4	48	43	2,625	5,000	8	60	2,656	15	59	60	5,650	15	59	60	5,650	15	59	60	5,650	15	59	60	5,650	
49	4,500	4	49	44	2,625	5,000	8	61	2,656	15	60	61	5,650	15	60	61	5,650	15	60	61	5,650	15	60	61	5,650	
50	4,500	4	50	45	2,625	5,000	8	62	2,656	15	61	62	5,650	15	61	62	5,650	15	61	62	5,650	15	61	62	5,650	
51	4,500	4	51	46	2,625	5,000	8	63	2,656	15	62	63	5,650	15	62	63	5,650	15	62	63	5,650	15	62	63	5,650	
52	4,500	4	52	47	2,625	5,000	8	64	2,656	15	63	64	5,650	15	63	64	5,650	15	63	64	5,650	15	63	64	5,650	
53	4,500	4	53	48	2,625	5,000	8	65	2,656	15	64	65	5,650	15	64	65	5,650	15	64	65	5,650	15	64	65	5,650	
54	4,500	4	54	49	2,625	5,000	8	66	2,656	15	65	66	5,650	15	65	66	5,650	15	65	66	5,650	15	65	66	5,650	
55	4,500	4	55	50	2,625	5,000	8	67	2,656	15	66	67	5,650	15	66	67	5,650	15	66	67	5,650	15	66	67	5,650	
56	4,500	4	56	51	2,625	5,000	8	68	2,656	15	67	68	5,650	15	67	68	5,650	15	67	68	5,650	15	67	68	5,650	
57	4,500	4	57	52	2,625	5,000	8	69	2,656	15	68	69	5,650	15	68	69	5,650	15	68	69	5,650	15	68	69	5,650	
58	4,500	4	58	53	2,625	5,000	8																			



(Sheet 2 of 9)



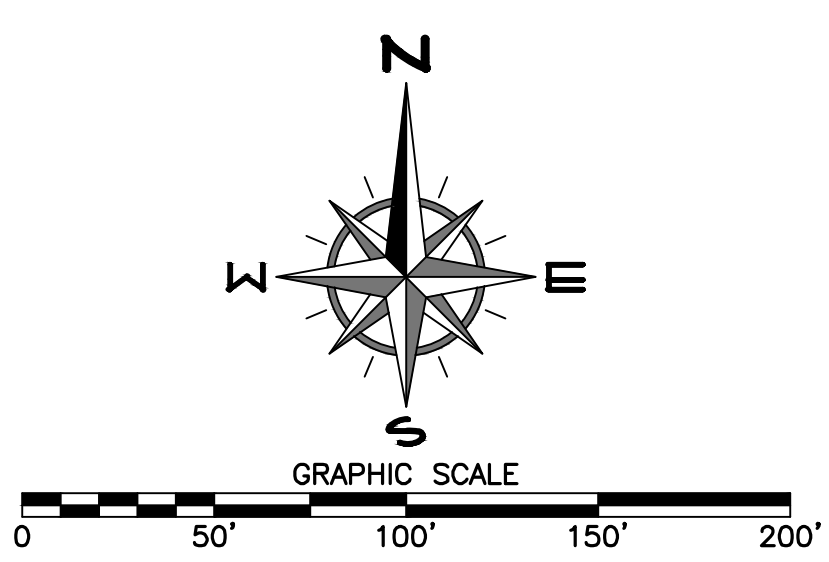
BOUNDARY CURVE DATA						
NO.	Δ	RADIUS	LENGTH	TANGENT	CHORD	CH. BEARING
C1	80°27'22"	9.98	15.75	10.06	14.17	N43°40'56"E
C2	08°00'58"	2652.84	370.85	185.73	370.55	N40°48'03"E
C3	07°38'43"	2559.67	641.55	171.03	340.34	S04°48'55"E
C4	208°54'23"	169.95	62.62	326.59	N00°46'04"E	
C5	15°11'13"	1430.48	379.17	378.73	378.73	N33°06'38"E
C6	15°11'13"	1430.48	379.17	190.70	378.06	N33°06'38"E
C7	34°06'20"	104.62	62.28	320.09	61.36	S31°30'06"E
C8	19°02'48"	1718.10	301.27	151.02	308.86	S30°32'33"E
C9	19°02'48"	1718.10	301.27	151.02	308.86	S30°32'33"E
C10	28°07'40"	940.79	685.25	235.68	452.23	N10°33'02"E
C11	32°27'31"	617.98	425.59	221.62	417.23	N44°35'51"E
C12	89°57'56"	15.00	23.55	14.99	21.21	S19°31'30"E
C13	43°35'22"	350.60	23.21	130.94	243.41	N68°27'51"E
C14	11°11'09"	53.37	106.74	7.74	106.74	N76°00'00"E
C15	11°10'09"	56.21	109.43	48.59	109.26	N62°06'30"E
C16	63°33'37"	493.90	56.55	28.31	56.57	N86°16'00"E
C17	89°58'58"	10.00	15.75	10.00	14.14	N43°40'56"E
C18	11°11'09"	53.37	106.74	7.74	106.74	N76°00'00"E
C19	11°13'25"	56.45	107.32	9.39	106.83	N44°17'22"E
C20	60°59'25"	254.65	63.21	149.27	258.45	S60°13'32"E
C21	52°37'04"	179.52	164.86	86.76	159.26	N59°36'20"E
C22	28°01'30"	69.61	294.26	180.14	291.34	N15°04'01"E



Preliminary Plat
WHITECAP
NORTH PADRE ISLAND

BEING 241.836 ACRES OUT OF A PORTION OF TRACT 27C AND 27D OF THE PADRE ISLAND - CORPUS CHRISTI ISLAND FAIRWAY ESTATES, HEREINAFTER REFERRED TO AS P.I.C.C.I.F.E., LOTS 27C AND 27D, A MAP OF WHICH IS RECORDED IN VOL. 67, PG. 779-785, MAP RECORDS, NUECES COUNTY, TEXAS, A PORTION OF P.I.C.C.I.F.E., BLOCKS 45 & 46, A MAP OF WHICH IS RECORDED IN VOL. 42, PG. 153-154, MAP RECORDS, NUECES COUNTY, TEXAS, A PORTION OF P.I.C.C.I.F.E., BLOCK 3, A MAP OF WHICH IS RECORDED IN VOL. 40, PG. 145-146, MAP RECORDS, NUECES COUNTY, TEXAS, ALL OF P.I.C.C.I.F.E., BLOCKS 37, 38, 39, AND 40, A MAP OF WHICH IS RECORDED IN VOL. 41, PG. 128-129, MAP RECORDS, NUECES COUNTY, TEXAS, A PORTION OF P.I.C.C.I.F.E., BLOCKS 24-35, A MAP OF WHICH IS RECORDED IN VOL. 40, PG. 154-159, MAP RECORDS, NUECES COUNTY, TEXAS, A PORTION OF P.I.C.C.I.F.E., BLOCKS 43 & 44, A MAP OF WHICH IS RECORDED IN VOL. 42, PG. 10-11, MAP RECORDS, NUECES COUNTY, TEXAS, AND PORTIONS OF P.I.C.C.I.F.E., BLOCKS 34, 35, AND 36, A MAP OF WHICH IS RECORDED IN VOL. 40, PG. 183-184, MAP RECORDS, NUECES COUNTY, TEXAS, SAID BLOCKS 26, 35, 36, 43, 44, AND A PORTION OF BLOCK 34 NOW VACATED AS PER PLAT RECORDED IN VOL. 67, PG. 686, MAP RECORDS, NUECES COUNTY, TEXAS, SAID 241.836 ACRES ALSO BEING REFERENCED IN CORRECTION WARRANTY DEED, DOC. NO. 2018045542, OFFICIAL RECORDS, NUECES COUNTY, TEXAS, AND DESCRIBED BY METES & BOUNDS OF A 28.629 ACRE TRACT (TRACT 1), A 72.316 ACRE TRACT (TRACT 2), A 74.440 ACRE TRACT (TRACT 3), AND A 30.884 ACRE TRACT (TRACT 4), AND SPECIAL WARRANTY DEED, DOC. NO. 2022027962, OFFICIAL RECORDS, NUECES COUNTY, TEXAS, AND DESCRIBED BY METES & BOUNDS OF A 39.60 ACRE TRACT, SAID & EXCEPT 3.766 ACRES OF A 60-FOOT WIDE STREET TRACT, ALSO KNOWN AS 'AQUARIUS STREET RE-ALIGNMENT', RECORDED IN DOC. NO. 2011039226, OFFICIAL RECORDS, NUECES COUNTY, TEXAS.

(Sheet 3 of 9)



LJA ENGINEERING

TEXAS ENGINEERING FIRM F-1386

TEXAS SURVEYING FIRM 10014001

5350 S. Staples Street, Suite 425

Corpus Christi, Texas 78411

phone: 361.991.8550

www.LJA.com

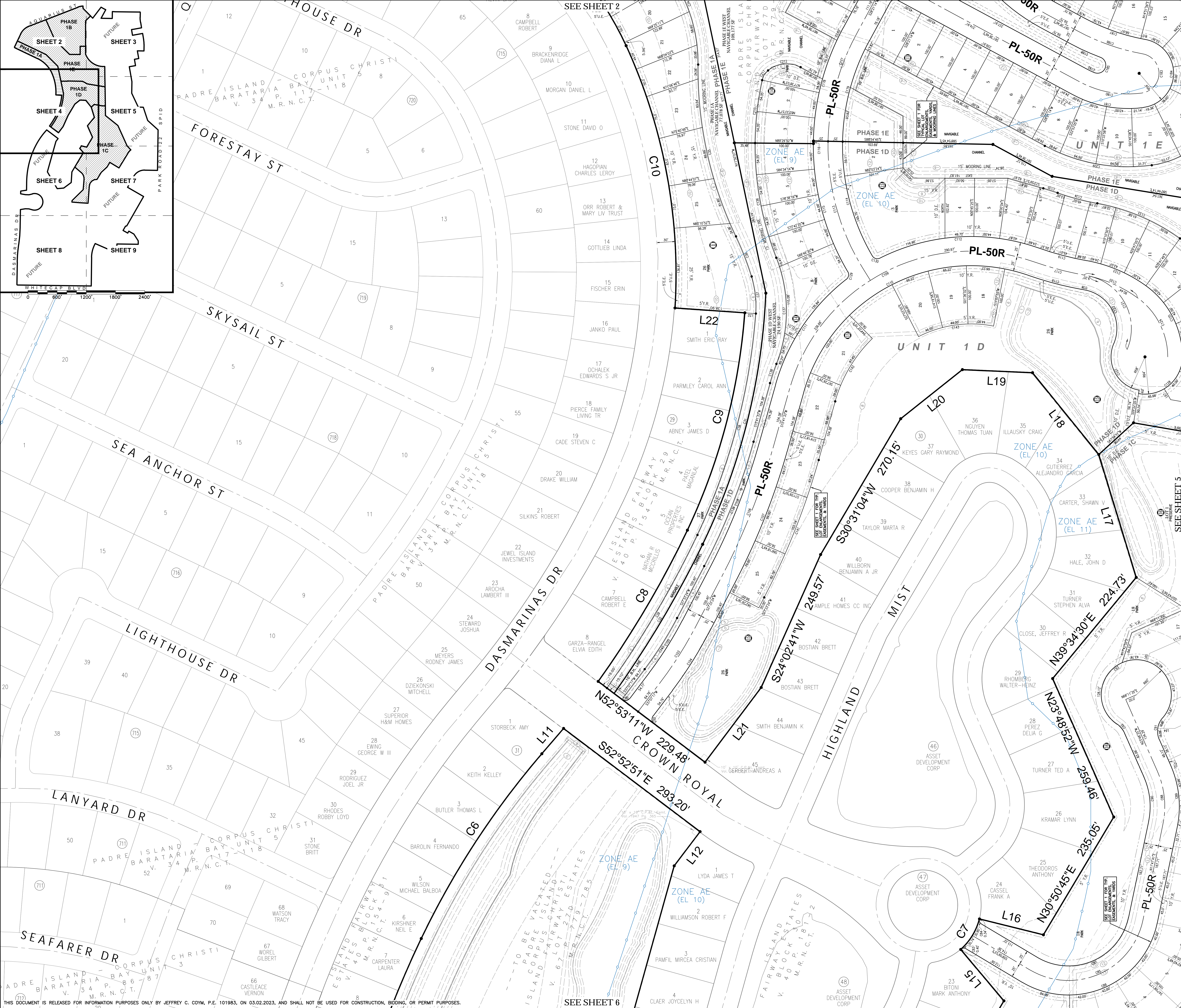
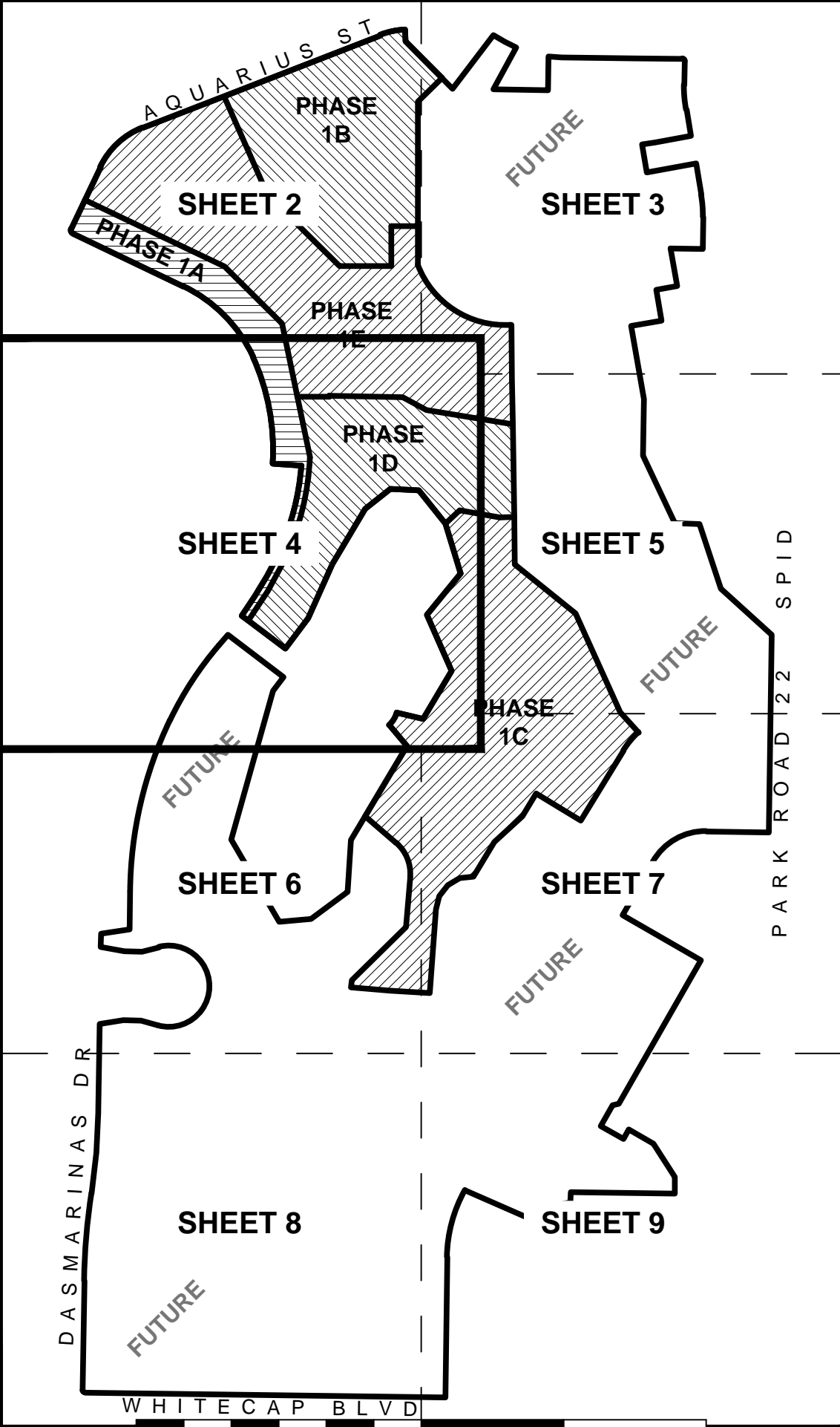
LJA C986-21143

BOUNDARY LINE DATA				
NO.	BEARING	LENGTH	NO.	BEARING
L1	N07°12'31"E	9.87'	L26	S89°15'39"E
L2	N81°19'28"E	101.69'	L27	S00°42'49"W
L3	S89°05'55"E	74.31'	L28	S10°06'06"E
L4	S74°13'03"E	74.31'	L29	S79°38'09"W
L5	S75°49'07"W	74.25'	L30	S80°04'16"W
L6	N89°11'10"W	73.86'	L31	S09°55'44"E
L7	N79°52'11"W	101.66'	L32	N79°37'29"E
L8	N00°43'06"E	55.99'	L33	S09°59'42"E
L9	N81°30'14"E	121.50'	L34	S00°54'41"W
L10	N00°56'05"E	159.98'	L35	N89°09'11"W
L11	N40°34'27"E	57.24'	L36	S10°22'07"E
L12	S37°05'42"W	73.43'	L37	S80°14'25"W
L13	N84°46'44"E	135.17'	L38	S09°45'35"E
L14	N53°19'48"E	190.19'	L39	S79°55'10"W
L15	N40°01'58"W	115.07'	L40	S87°44'57"E
L16	S76°03'33"E	112.87'	L41	S29°47'00"W
L17	N16°54'25"W	220.32'	L42	S29°52'05"E
L18	N39°02'15"W	180.41'	L43	S78°11'24"W
L19	N87°28'42"W	120.19'	L44	S29°47'04"W
L20	S51°27'50"W	135.13'	L45	S59°59'36"E
L21	S36°57'46"W	160.17'	L46	N28°38'51"E
L22	N86°00'41"W	119.90'	L47	S60°12'57"E
L23	S02°16'21"E	47.77'	L48	S32°44'41"E
L24	S28°44'12"W	200.97'	L49	S00°41'24"W
L25	N07°49'34"E	141.97'	L50	S02°01'48"W

BOUNDARY CURVE DATA				
NO.	Δ	RADIUS	LENGTH	TANGENT
C1	90°27'24"	9.98'	15.76'	10.06'
C2	08°00'35"	2652.84'	370.85'	185.73'
C3	07°38'43"	2599.67'	341.55'	171.03'
C4	209°54'23"	169.95'	622.62'	328.39'
C5	25°06'31"	1698.20'	744.20'	378.17'
C6	15°11'13"	1430.48'	379.17'	190.70'
C7	34°09'20"	104.62'	62.28'	32.06'
C8	10°02'48"	1718.10'	301.27'	151.02'
C9	21°00'26"	1056.90'	387.52'	195.96'
C10	28°07'40"	940.79'	461.85'	235.68'
C11	38°27'31"	617.68'	425.59'	221.62'
C12	89°57'56"	15.00'	23.55'	14.99'
C13	43°17'02"	330.00'	249.30'	130.94'
C14	18°31'58"	330.00'	106.74'	53.84'
C15	11°09'02"	562.51'	109.43'	54.89'
C16	06°33'37"	493.90'	56.55'	28.31'
C17	89°58'58"	10.00'	15.70'	10.00'
C18	10°52'08"	553.81'	105.06'	52.89'
C19	11°32'55"	463.32'	93.39'	46.85'
C20	60°59'25"	254.65'	271.07'	149.27'
C21	52°37'04"	179.52'	164.86'	88.76'
C22	28°01'30"	601.61'	294.26'	150.14'

SEE SHEET 5

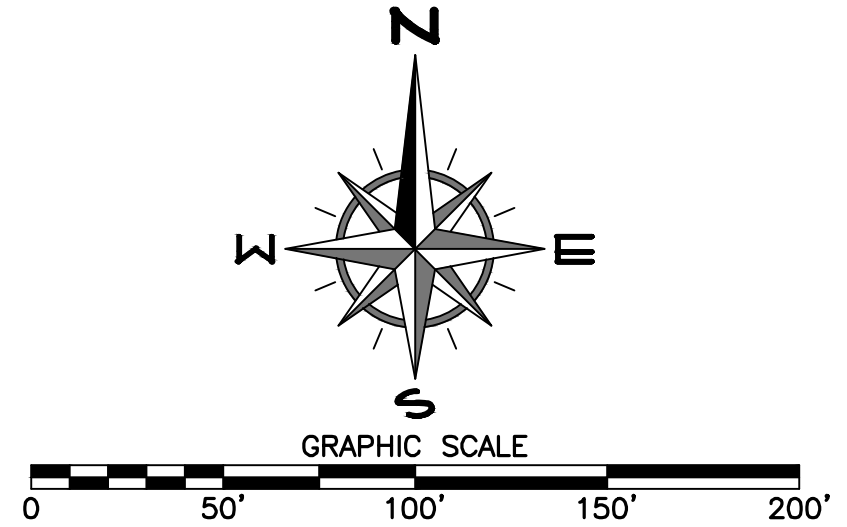
THIS DOCUMENT IS RELEASED FOR INFORMATION PURPOSES ONLY BY JEFFREY C. COYM, P.E. 101983, ON 03.02.2023, AND SHALL NOT BE USED FOR CONSTRUCTION, BIDDING, OR PERMIT PURPOSES.



Preliminary Plat
WHITECAP
NORTH PADRE ISLAND

BEGING 241.836 ACRES OUT OF A PORTION OF TRACT 27C AND 27D OF THE PADRE ISLAND - CORPUS CHRISTI ISLAND FAIRWAY ESTATES, HEREINAFTER REFERRED TO AS P.I.C.C.I.F.E., LOTS 27C AND 27D, A MAP OF WHICH IS RECORDED IN VOL. 67, PG. 773-785, MAP RECORDS, NUECES COUNTY, TEXAS, A PORTION OF P.I.C.C.I.F.E., BLOCKS 45 & 46, A MAP OF WHICH IS RECORDED IN VOL. 42, PG. 153-154, MAP RECORDS, NUECES COUNTY, TEXAS, A PORTION OF P.I.C.C.I.F.E., BLOCK 3, A MAP OF WHICH IS RECORDED IN VOL. 40, PG. 145-146, MAP RECORDS, NUECES COUNTY, TEXAS, ALL OF P.I.C.C.I.F.E., BLOCKS 37, 38, 39, AND 40, A MAP OF WHICH IS RECORDED IN VOL. 41, PG. 128-129, MAP RECORDS, NUECES COUNTY, TEXAS, A PORTION OF P.I.C.C.I.F.E., BLOCKS 24-25, A MAP OF WHICH IS RECORDED IN VOL. 40, PG. 154-159, MAP RECORDS, NUECES COUNTY, TEXAS, A PORTION OF P.I.C.C.I.F.E., BLOCKS 43 & 44, A MAP OF WHICH IS RECORDED IN VOL. 42, PG. 10-11, MAP RECORDS, NUECES COUNTY, TEXAS, AND PORTIONS OF P.I.C.C.I.F.E., BLOCKS 34, 35, AND 36, A MAP OF WHICH IS RECORDED IN VOL. 40, PG. 183-184, MAP RECORDS, NUECES COUNTY, TEXAS, SAID BLOCKS 26, 35, 36, 43, 44, AND A PORTION OF BLOCK 34 NOW VACATED AS PER PLAT RECORDED IN VOL. 67, PG. 686, MAP RECORDS, NUECES COUNTY, TEXAS, SAID 241.836 ACRES ALSO BEING REFERENCED IN CORRECTION WARRANTY DEED, DOC. NO. 2018045542, OFFICIAL RECORDS, NUECES COUNTY, TEXAS, AND DESCRIBED BY METES & BOUNDS OF A 28.629 ACRE TRACT (TRACT 1), A 72.316 ACRE TRACT (TRACT 2), A 74.440 ACRE TRACT (TRACT 3), AND A 30.884 ACRE TRACT (TRACT 4), AND SPECIAL WARRANTY DEED, DOC. NO. 2022027962, OFFICIAL RECORDS, NUECES COUNTY, TEXAS, AND DESCRIBED BY METES & BOUNDS OF A 39.60 ACRE TRACT, SAID & EXCEPT 3.786 ACRES OF A 60-FOOT WIDE STREET TRACT, ALSO KNOWN AS AQUARIUS STREET RE-ALIGNMENT, RECORDED IN DOC. NO. 2011039226, OFFICIAL RECORDS, NUECES COUNTY, TEXAS.

(Sheet 4 of 9)

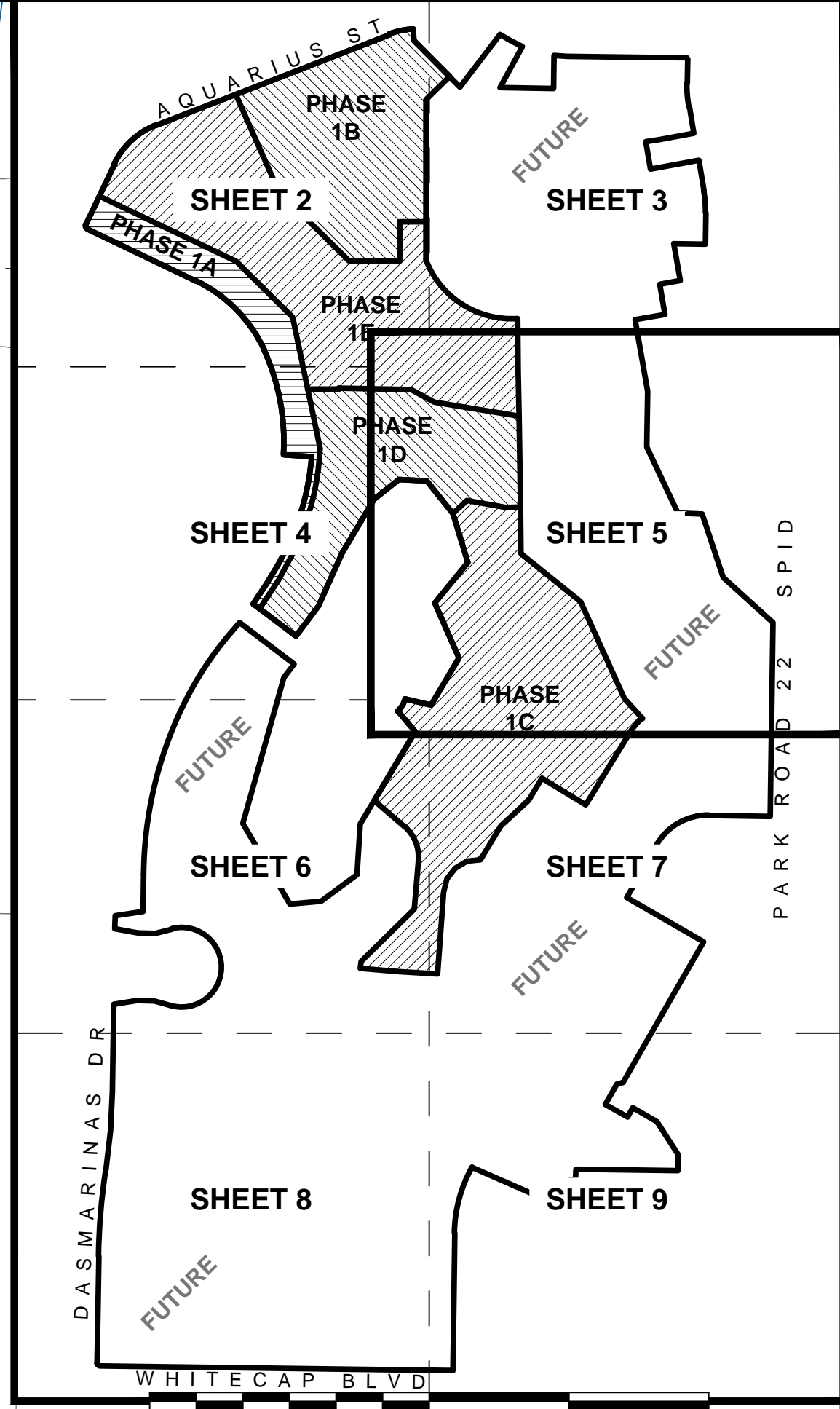
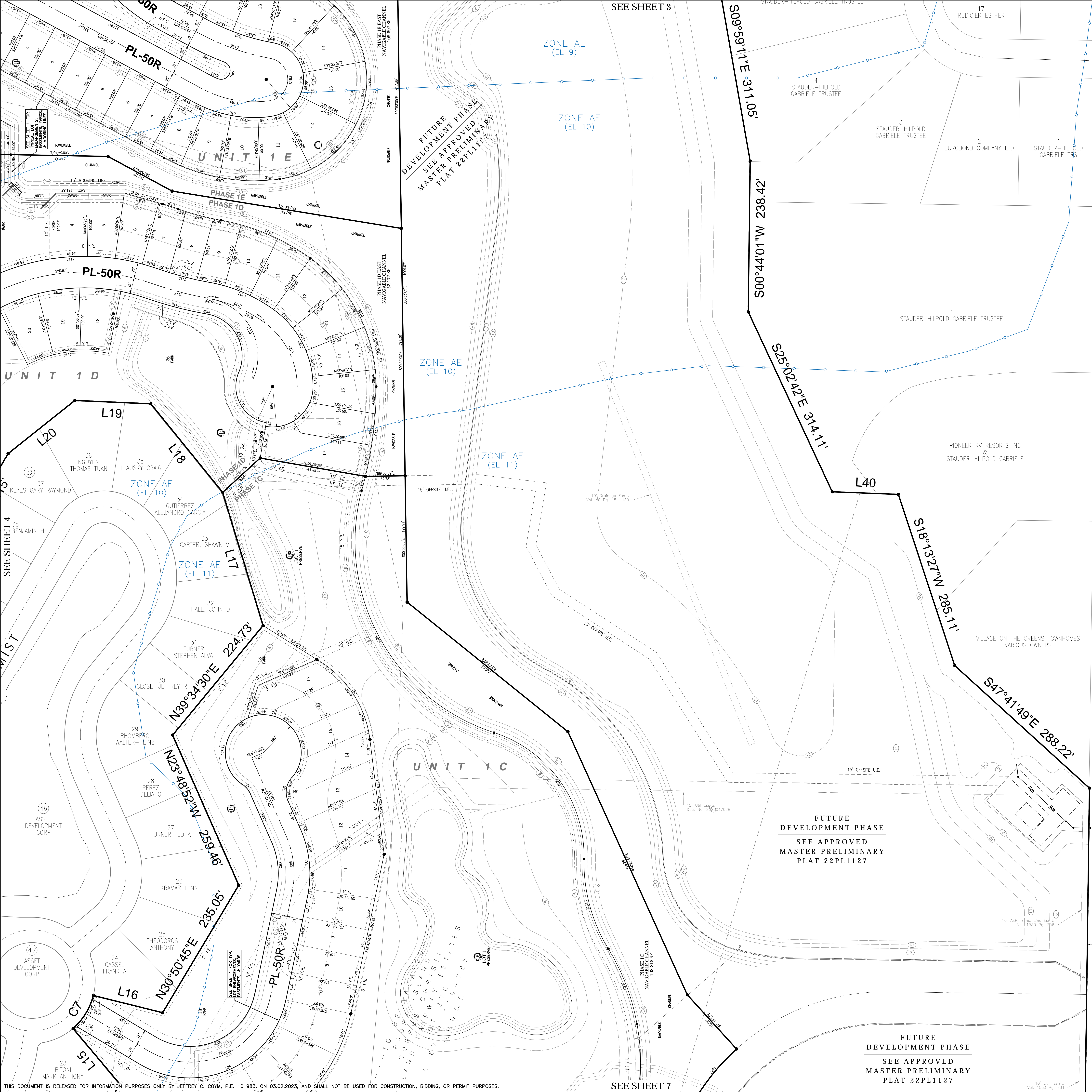


LJA ENGINEERING
TEXAS ENGINEERING FIRM F-1386
TEXAS SURVEYING FIRM 10014001
5350 S. Staples Street, Suite 425
Corpus Christi, Texas 78411
phone.361.991.8550
www.LJA.com

LJA C986-21143

BOUNDARY LINE DATA					
NO.	BEARING	LENGTH	NO.	BEARING	LENGTH
L1	N07°12'31"E	9.87'	L26	S89°15'33"E	198.76'
L2	N81°19'28"E	101.69'	L27	S00°42'49"W	99.93'
L3	S89°05'55"E	74.31'	L28	S10°06'06"E	110.22'
L4	S74°13'03"E	74.31'	L29	S79°38'09"W	155.16'
L5	S75°49'07"W	74.25'	L30	S80°04'16"W	54.93'
L6	N89°11'10"W	73.86'	L31	S09°55'44"E	119.53'
L7	N79°52'11"W	101.66'	L32	N79°37'29"E	210.45'
L8	N00°43'06"E	55.99'	L33	S09°59'42"E	133.72'
L9	N81°30'14"E	121.50'	L34	S09°54'41"W	135.04'
L10	N00°56'05"E	159.98'	L35	N89°09'11"W	136.86'
L11	N40°34'27"E	57.24'	L36	S10°22'07"E	160.91'
L12	S37°05'42"W	73.43'	L37	S80°14'25"W	89.00'
L13	N84°46'44"E	135.17'	L38	S02°45'35"E	132.00'
L14	N53°19'48"E	190.19'	L39	S79°55'10"W	130.87'
L15	N40°01'58"W	115.07'	L40	S87°44'57"E	104.73'
L16	S78°03'33"E	112.87'	L41	S29°47'00"W	170.73'
L17	N16°42'25"W	220.32'	L42	S29°52'06"W	87.94'
L18	N39°02'15"W	180.41'	L43	S78°11'24"W	27.65'
L19	N87°28'42"W	120.19'	L44	S29°47'04"W	100.29'
L20	S51°27'50"W	135.13'	L45	S59°39'36"E	109.90'
L21	S36°57'48"W	160.17'	L46	N28°38'51"E	45.99'
L22	N86°00'41"W	119.90'	L47	S60°12'57"E	120.20'
L23	S02°16'21"E	47.77'	L48	S32°44'41"E	165.63'
L24	S28°44'12"W	200.97'	L49	S00°41'24"W	70.34'
L25	N07°49'34"E	141.97'	L50	S02°01'48"W	44.63'

BOUNDARY CURVE DATA					
NO.	Δ	RADIUS	LENGTH	TANGENT	CHORD
C1	90°27'24"	9.98'	15.76'	10.06'	14.17'
C2	08°00'35"	2652.84'	370.85'	185.73'	370.55'
C3	07°38'43"	2599.67'	341.95'	171.03'	341.30'
C4	209°54'23"	169.95'	622.62'	328.39'	N00°46'04"E
C5	25°06'31"	1698.20'	744.20'	378.17'	N13°06'15"E
C6	15°11'13"	1430.48'	379.17'	190.70'	S37°06'58"E
C7	34°09'20"	104.62'	62.28'	32.09'	S13°30'06"W
C8	10°02'48"	1718.10'	301.27'	151.02'	S00°88'S30°32'33"W
C9	21°00'26"	1056.90'	387.52'	195.96'	S85°35'S14°46'48"W
C10	28°07'40"	940.79'	461.85'	235.68'	S87°23'S10°33'02"W
C11	32°27'31"	617.98'	425.59'	221.62'	S44°45'25"E
C12	89°57'56"	15.00'	23.55'	14.99'	N19°31'01"W
C13	43°17'02"	330.00'	249.30'	130.94'	N43°40'27"E
C14	18°31'58"	330.00'	106.74'	53.84'	N06°28'S78°00'59"E
C15	11°09'02"	562.51'	109.43'	54.89'	N02°06'50"W
C16	06°33'37"	49.390'	56.55'	28.31'	S62°N86°16'00"W
C17	88°58'58"	10.00'	15.70'	10.00'	N44°16'50"W
C18	10°52'08"	553.81'	105.06'	52.89'	N04°55'45"W
C19	11°32'55"	463.32'	93.39'	48.85'	N04°17'22"W
C20	60°59'25"	254.65'	271.07'	149.27'	S80°13'32"W
C21	52°37'04"	179.52'	164.86'	88.76'	N59°36'20"E
C22	28°01'30"	601.61'	294.28'	150.14'	N15°04'01"E



Preliminary Plat
WHITECAP
NORTH PADRE ISLAND

BEING 241.836 ACRES OUT OF A PORTION OF TRACT 27C AND 27D OF THE PADRE ISLAND - CORPUS CHRISTI ISLAND FAIRWAY ESTATES, HEREINAFTER REFERRED TO AS P.I.C.C.I.F.E., LOTS 27C AND 27D, A MAP OF WHICH IS RECORDED IN VOL. 67, PG. 779-785, MAP RECORDS, NUECES COUNTY, TEXAS, A PORTION OF P.I.C.C.I.F.E., BLOCKS 45 & 46, A MAP OF WHICH IS RECORDED IN VOL. 42, PG. 153-154, MAP RECORDS, NUECES COUNTY, TEXAS, A PORTION OF P.I.C.C.I.F.E., BLOCK 3, A MAP OF WHICH IS RECORDED IN VOL. 40, PG. 145-146, MAP RECORDS, NUECES COUNTY, TEXAS, ALL OF P.I.C.C.I.F.E., BLOCKS 37, 38, 39, AND 40, A MAP OF WHICH IS RECORDED IN VOL. 41, PG. 128-129, MAP RECORDS, NUECES COUNTY, TEXAS, A PORTION OF P.I.C.C.I.F.E., BLOCKS 24-33, A MAP OF WHICH IS RECORDED IN VOL. 40, PG. 154-159, MAP RECORDS, NUECES COUNTY, TEXAS, A PORTION OF P.I.C.C.I.F.E., BLOCKS 43 & 44, A MAP OF WHICH IS RECORDED IN VOL. 42, PG. 10-11, MAP RECORDS, NUECES COUNTY, TEXAS, AND PORTIONS OF P.I.C.C.I.F.E., BLOCKS 34, 35, AND 36, A MAP OF WHICH IS RECORDED IN VOL. 40, PG. 183-184, MAP RECORDS, NUECES COUNTY, TEXAS, SAID BLOCKS 26, 35, 36, 43, 44, AND A PORTION OF BLOCK 34 NOW VACATED AS PER PLAT RECORDED IN VOL. 67, PG. 686, MAP RECORDS, NUECES COUNTY, TEXAS, SAID 241.836 ACRES ALSO BEING REFERENCED IN CORRECTION WARRANTY DEED, DOC. NO. 2018045542, OFFICIAL RECORDS, NUECES COUNTY, TEXAS, AND DESCRIBED BY METES & BOUNDS OF A 28.629 ACRE TRACT (TRACT 1), A 72.316 ACRE TRACT (TRACT 2), A 74.440 ACRE TRACT (TRACT 3), AND A 30.884 ACRE TRACT (TRACT 4), AND SPECIAL WARRANTY DEED, DOC. NO. 2022027962, OFFICIAL RECORDS, NUECES COUNTY, TEXAS, AND DESCRIBED BY METES & BOUNDS OF A 39.60 ACRE TRACT, SAVE & EXCEPT 3.766 ACRES OF A 60-FOOT WIDE STREET TRACT, ALSO KNOWN AS 'AQUARIUS STREET RE-ALIGNMENT', RECORDED IN DOC. NO. 2011039226, OFFICIAL RECORDS, NUECES COUNTY, TEXAS.

(Sheet 5 of 9)

LJA ENGINEERING
TEXAS ENGINEERING FIRM F-1386
TEXAS SURVEYING FIRM 10014001
5350 S. Staples Street, Suite 425
Corpus Christi, Texas 78411
phone: 361.991.8550
www.LJA.com
LJA C986-21143

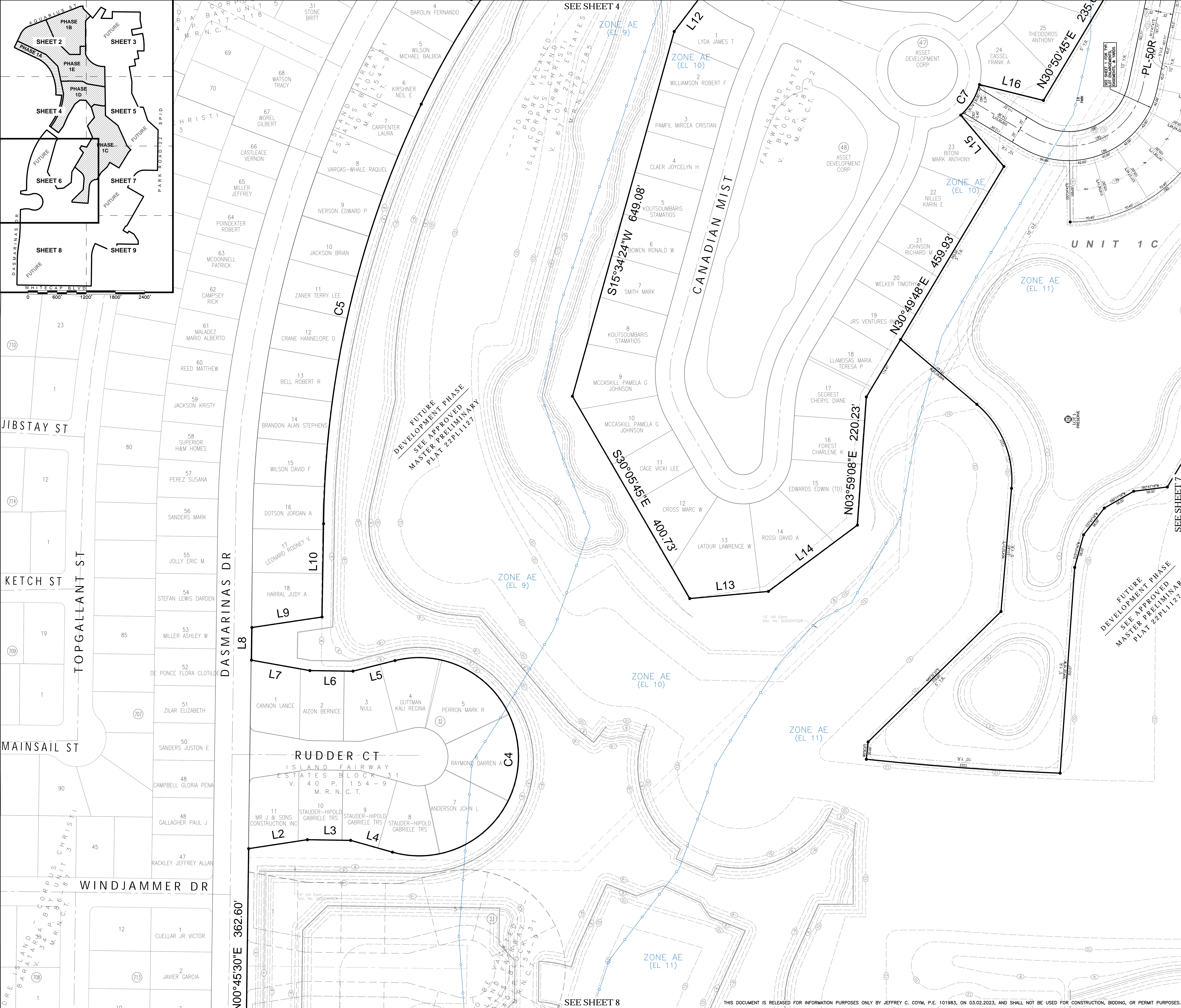
BOUNDARY LINE DATA					
NO.	BEARING	LENGTH	NO.	BEARING	LENGTH
L1	N07°12'31"E	9.87'	L26	S89°15'33"E	198.76'
L2	N81°19'28"E	101.69'	L27	S00°42'49"W	99.93'
L3	S89°05'55"E	74.31'	L28	S10°06'06"E	110.22'
L4	S74°13'03"E	74.31'	L29	S79°38'09"W	155.16'
L5	S75°49'07"W	74.25'	L30	S80°04'16"W	54.93'
L6	N89°11'10"W	73.86'	L31	S09°55'44"E	119.53'
L7	N79°52'11"W	101.66'	L32	N79°37'29"E	210.45'
L8	N00°43'06"E	55.99'	L33	S09°59'42"E	133.72'
L9	N81°30'14"E	121.50'	L34	S00°54'41"W	135.04'
L10	N00°56'05"E	159.98'	L35	N89°09'11"W	136.86'
L11	N40°34'27"E	57.24'	L36	S10°22'07"E	160.91'
L12	S37°05'42"W	73.43'	L37	S80°14'25"W	89.00'
L13	N84°46'44"E	135.17'	L38	S09°45'35"E	132.00'
L14	N53°19'48"E	190.19'	L39	S79°55'10"W	130.87'
L15	N40°01'58"W	115.07'	L40	S87°44'57"E	104.73'
L16	S76°03'33"E	112.87'	L41	S29°47'00"W	170.73'
L17	N16°49'25"W	220.32'	L42	S29°52'06"W	87.94'
L18	N39°02'15"W	180.41'	L43	S78°11'24"W	27.65'
L19	N87°28'42"W	120.19'	L44	S29°47'04"W	100.29'
L20	S51°27'50"W	135.13'	L45	S59°59'36"E	109.90'
L21	S36°57'46"W	160.17'	L46	N29°38'51"E	45.99'
L22	N86°00'41"W	119.90'	L47	S60°12'57"E	120.20'
L23	S02°16'21"E	47.77'	L48	S32°44'41"E	165.63'
L24	S28°44'12"W	200.97'	L49	S00°41'24"W	70.34'
L25	N00°49'34"E	141.97'	L50	S02°01'48"W	44.63'

BOUNDARY CURVE DATA					
NO.	Δ	RADIUS	LENGTH	TANGENT	CHORD
C1	90°27'24"	9.98'	15.76'	10.06'	14.17'
C2	08°00'35"	2652.84'	370.85'	185.73'	370.55'
C3	07°38'43"	2559.67'	341.55'	171.03'	341.30'
C4	209°54'23"	169.95'	622.62'	---	328.39'
C5	25°06'31"	1698.20'	744.20'	378.17'	738.26'
C6	15°11'13"	1430.48'	379.17'	190.70'	378.06'
C7	34°06'20"	104.62'	62.28'	32.09'	61.36'
C8	10°02'48"	1718.10'	301.27'	151.02'	300.88'
C9	21°00'26"	1056.90'	387.52'	195.96'	385.35'
C10	28°07'40"	940.79'	461.85'	235.68'	457.23'
C11	38°27'31"	617.98'	425.59'	221.62'	417.23'
C12	89°57'56"	15.00'	23.55'	14.99'	21.21'
C13	43°17'02"	330.00'	249.30'	130.94'	243.41'
C14	18°31'58"	330.00'	106.74'	53.84'	106.28'
C15	11°09'02"	562.11'	109.43'	54.89'	109.26'
C16	06°33'37"	493.90'	56.55'	28.31'	56.52'
C17	88°58'58"	10.00'	15.70'	10.00'	14.14'
C18	11°05'08"	553.81'	105.06'	52.89'	104.90'
C19	11°32'55"	463.32'	93.59'	46.85'	93.23'
C20	60°59'25"	254.65'	271.07'	149.27'	258.45'
C21	52°37'04"	179.52'	164.86'	88.76'	159.13'
C22	28°01'30"	601.61'	294.28'	150.14'	291.34'

FUTURE DEVELOPMENT PHASE
SEE APPROVED MASTER PRELIMINARY PLAT 22PL1127

FUTURE DEVELOPMENT PHASE
SEE APPROVED MASTER PRELIMINARY PLAT 22PL1127

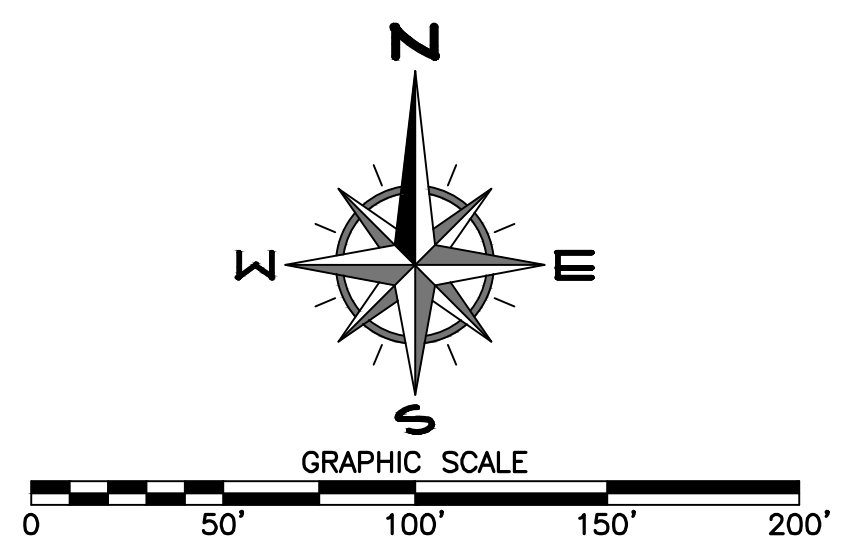
SEE SHEET 3



Preliminary Plat
WHITECAP
NORTH PADRE ISLAND

BEING 241.836 ACRES OUT OF A PORTION OF TRACT 27C AND 27D OF THE PADRE ISLAND - CORPUS CHRISTI ISLAND FAIRWAY ESTATES, HEREFTER REFERRED TO AS P.I.C.C.I.F.E., LOTS 27C AND 27D, A MAP OF WHICH IS RECORDED IN VOL. 67, PG. 773-785, MAP RECORDS, NUECES COUNTY, TEXAS, A PORTION OF P.I.C.C.I.F.E., BLOCKS 45 & 46, A MAP OF WHICH IS RECORDED IN VOL. 42, PG. 153-154, MAP RECORDS, NUECES COUNTY, TEXAS, A PORTION OF P.I.C.C.I.F.E., BLOCK 3, A MAP OF WHICH IS RECORDED IN VOL. 40, PG. 145-146, MAP RECORDS, NUECES COUNTY, TEXAS, ALL OF P.I.C.C.I.F.E., BLOCKS 37, 38, 39, AND 40, A MAP OF WHICH IS RECORDED IN VOL. 41, PG. 128-129, MAP RECORDS, NUECES COUNTY, TEXAS, A PORTION OF P.I.C.C.I.F.E., BLOCKS 24-33, A MAP OF WHICH IS RECORDED IN VOL. 40, PG. 154-159, MAP RECORDS, NUECES COUNTY, TEXAS, A PORTION OF P.I.C.C.I.F.E., BLOCKS 43 & 44, A MAP OF WHICH IS RECORDED IN VOL. 42, PG. 10-11, MAP RECORDS, NUECES COUNTY, TEXAS, AND PORTIONS OF P.I.C.C.I.F.E., BLOCKS 34, 35, AND 36, A MAP OF WHICH IS RECORDED IN VOL. 40, PG. 183-184, MAP RECORDS, NUECES COUNTY, TEXAS, SAID BLOCKS 26, 35, 36, 43, 44, AND A PORTION OF BLOCK 34 NOW VACATED AS PER PLAT RECORDED IN VOL. 67, PG. 686, MAP RECORDS, NUECES COUNTY, TEXAS, SAID 241.836 ACRES ALSO BEING REFERENCED IN CORRECTION WARRANTY DEED, DOC. NO. 2018045542, OFFICIAL RECORDS, NUECES COUNTY, TEXAS, AND DESCRIBED BY METES & BOUNDS OF A 28.629 ACRE TRACT (TRACT 1), A 72.316 ACRE TRACT (TRACT 2), A 74.440 ACRE TRACT (TRACT 3), AND A 30.884 ACRE TRACT (TRACT 4), AND SPECIAL WARRANTY DEED, DOC. NO. 2022027962, OFFICIAL RECORDS, NUECES COUNTY, TEXAS, AND DESCRIBED BY METES & BOUNDS OF A 39.60 ACRE TRACT, SAID & EXCEPT 3.786 ACRES OF A 60-FOOT WIDE STREET TRACT, ALSO KNOWN AS 'AQUARIUS STREET RE-ALIGNMENT', RECORDED IN DOC. NO. 2011039226, OFFICIAL RECORDS, NUECES COUNTY, TEXAS.

(Sheet 6 of 9)

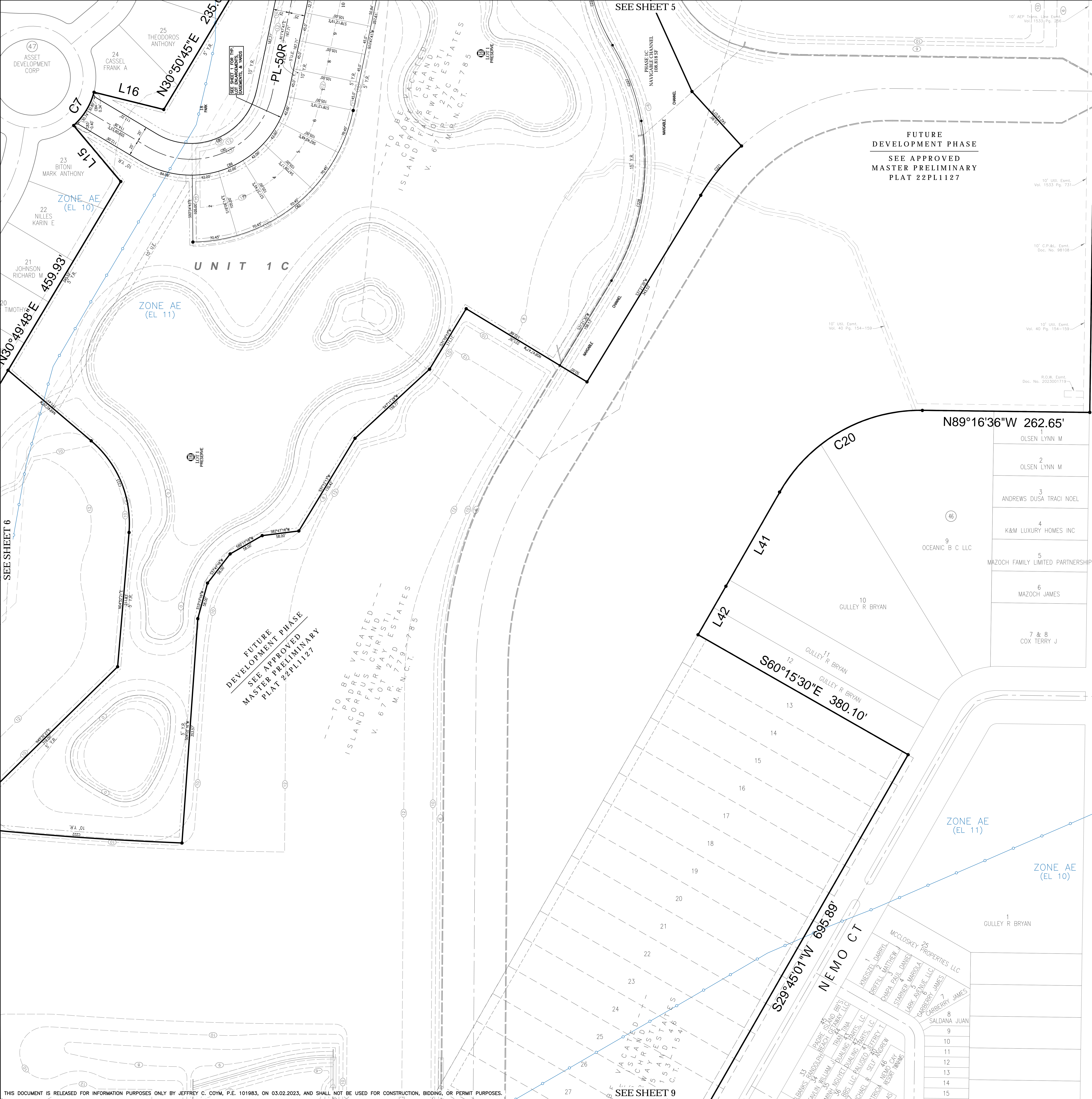


LJA ENGINEERING
TEXAS ENGINEERING FIRM F-1386
TEXAS SURVEYING FIRM 10014001
5360 S. Staples Street, Suite 425
Corpus Christi, Texas 78411
phone: 361.991.8550
www.LJA.com

LJA C986-21143

BOUNDARY LINE DATA				
NO.	BEARING	LENGTH	NO.	BEARING
L1	N07°12'31"E	9.87'	L26	S89°15'33"E
L2	N81°19'28"E	101.69'	L27	S00°42'49"W
L3	S89°05'55"E	74.31'	L28	S10°06'06"E
L4	S74°13'03"E	74.31'	L29	S79°38'09"W
L5	S75°49'07"W	74.25'	L30	S80°04'16"W
L6	N89°11'10"W	73.86'	L31	S09°55'44"E
L7	N79°52'11"W	101.66'	L32	N79°37'29"E
L8	N00°43'06"E	55.99'	L33	S09°59'42"E
L9	N81°30'14"E	121.50'	L34	S00°54'41"W
L10	N00°56'05"E	159.98'	L35	N89°09'11"W
L11	N40°34'27"E	57.24'	L36	S10°22'07"E
L12	S37°05'42"W	73.43'	L37	S80°14'25"W
L13	N84°46'44"E	135.17'	L38	S09°45'35"E
L14	N53°19'48"E	190.19'	L39	S79°55'10"W
L15	N40°01'58"W	115.07'	L40	S87°44'57"E
L16	S78°03'33"E	112.87'	L41	S29°47'00"W
L17	N16°54'25"W	220.32'	L42	S29°52'06"W
L18	N39°02'15"W	180.41'	L43	S78°11'24"W
L19	N87°28'42"W	120.19'	L44	S29°47'04"W
L20	S51°27'50"W	135.13'	L45	S59°39'36"E
L21	S36°57'48"W	160.17'	L46	N28°38'51"E
L22	N86°00'41"W	119.90'	L47	S60°12'57"E
L23	S02°16'21"E	47.77'	L48	S32°44'41"E
L24	S28°44'12"W	200.97'	L49	S00°41'24"W
L25	N07°49'34"E	141.97'	L50	S02°01'48"W

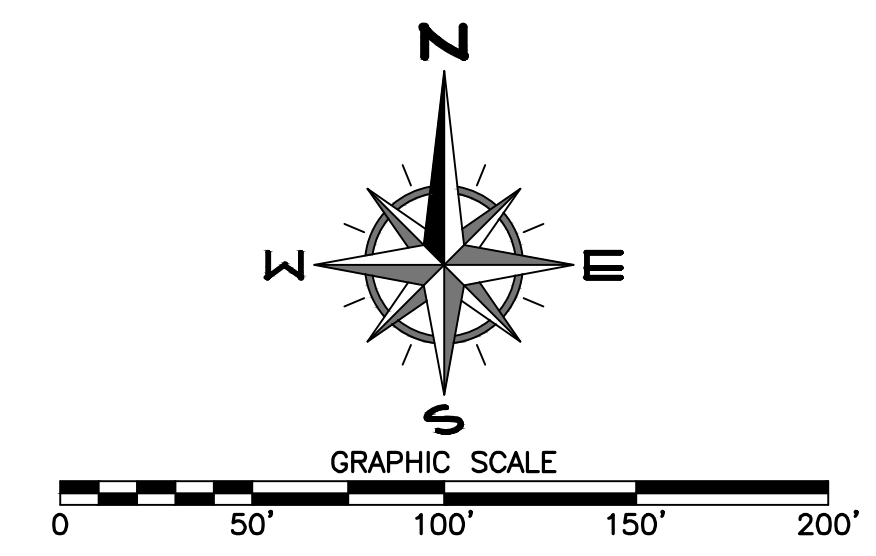
BOUNDARY CURVE DATA						
NO.	Δ	RADIUS	LENGTH	TANGENT	CHORD	CH. BEARING
C1	90°27'24"	9.98'	15.76'	10.06'	14.17'	N43°40'56"W
C2	08°00'35"	2652.84'	370.85'	185.73'	370.55'	N04°48'03"E
C3	07°38'43"	2359.67'	341.95'	171.03'	341.30'	S04°48'55"W
C4	209°54'23"	169.95'	622.62'	---	328.39'	N00°46'04"E
C5	25°06'31"	1698.20'	744.20'	378.17'	738.26'	N13°06'15"E
C6	15°11'13"	1430.48'	379.17'	190.70'	378.06'	N33°06'58"E
C7	34°06'20"	104.62'	62.28'	32.09'	61.36'	S31°30'06"W
C8	10°02'48"	1718.10'	301.27'	151.02'	300.88'	S30°32'33"W
C9	21°00'26"	1056.90'	387.52'	195.96'	385.35'	S14°46'46"W
C10	28°07'40"	940.79'	461.85'	235.68'	457.23'	N10°33'02"W
C11	38°27'31"	617.98'	425.59'	221.62'	417.23'	S44°45'25"E
C12	89°57'56"	15.00'	23.55'	14.99'	21.21'	N19°31'01"W
C13	43°17'02"	330.00'	249.30'	130.94'	243.41'	N47°06'27"E
C14	18°31'58"	330.00'	106.74'	53.84'	106.28'	N78°00'59"E
C15	11°09'02"	562.11'	109.43'	54.89'	109.26'	N52°08'50"W
C16	06°33'37"	493.90'	56.55'	28.31'	56.52'	N86°16'00"W
C17	88°58'58"	10.00'	15.70'	10.00'	14.14'	N44°18'50"W
C18	10°52'08"	553.81'	105.06'	52.89'	104.90'	N04°55'45"W
C19	11°32'55"	463.32'	93.39'	46.85'	93.23'	N04°17'26"W
C20	65°59'25"	254.65'	271.07'	149.27'	258.45'	S80°13'32"W
C21	52°37'04"	179.52'	164.86'	88.76'	159.13'	N59°36'20"E
C22	28°01'30"	601.61'	294.26'	150.14'	291.34'	N15°04'01"E



Preliminary Plat
WHITECAP
NORTH PADRE ISLAND

BEING 241.836 ACRES OUT OF A PORTION OF TRACT 27C AND 27D OF THE PADRE ISLAND - CORPUS CHRISTI ISLAND FAIRWAY ESTATES, HEREFTER REFERRED TO AS P.I.C.C.I.F.E., LOTS 27C AND 27D, A MAP OF WHICH IS RECORDED IN VOL. 67, PG. 779-785, MAP RECORDS, NUECES COUNTY, TEXAS, A PORTION OF P.I.C.C.I.F.E., BLOCKS 45 & 46, A MAP OF WHICH IS RECORDED IN VOL. 42, PG. 153-154, MAP RECORDS, NUECES COUNTY, TEXAS, A PORTION OF P.I.C.C.I.F.E., BLOCK 3, A MAP OF WHICH IS RECORDED IN VOL. 40, PG. 145-146, MAP RECORDS, NUECES COUNTY, TEXAS, ALL OF P.I.C.C.I.F.E., BLOCKS 37, 38, 39, AND 40, A MAP OF WHICH IS RECORDED IN VOL. 41, PG. 128-129, MAP RECORDS, NUECES COUNTY, TEXAS, A PORTION OF P.I.C.C.I.F.E., BLOCKS 24-33, A MAP OF WHICH IS RECORDED IN VOL. 40, PG. 154-159, MAP RECORDS, NUECES COUNTY, TEXAS, A PORTION OF P.I.C.C.I.F.E., BLOCKS 43 & 44, A MAP OF WHICH IS RECORDED IN VOL. 42, PG. 10-11, MAP RECORDS, NUECES COUNTY, TEXAS, AND PORTIONS OF P.I.C.C.I.F.E., BLOCKS 34, 35, AND 36, A MAP OF WHICH IS RECORDED IN VOL. 40, PG. 183-184, MAP RECORDS, NUECES COUNTY, TEXAS, SAID BLOCKS 26, 35, 36, 43, 44, AND A PORTION OF BLOCK 34 NOW VACATED AS PER PLAT RECORDED IN VOL. 67, PG. 686, MAP RECORDS, NUECES COUNTY, TEXAS, SAID 241.836 ACRES ALSO BEING REFERENCED IN CORRECTION WARRANTY DEED, DOC. NO. 2018045542, OFFICIAL RECORDS, NUECES COUNTY, TEXAS, AND DESCRIBED BY METES & BOUNDS OF A 28.629 ACRE TRACT (TRACT 1), A 72.316 ACRE TRACT (TRACT 2), A 74.440 ACRE TRACT (TRACT 3), AND A 30.884 ACRE TRACT (TRACT 4), AND SPECIAL WARRANTY DEED, DOC. NO. 2022027962, OFFICIAL RECORDS, NUECES COUNTY, TEXAS, AND DESCRIBED BY METES & BOUNDS OF A 39.60 ACRE TRACT, SAVE & EXCEPT 3.786 ACRES OF A 60-FOOT WIDE STREET TRACT, ALSO KNOWN AS 'AQUARIUS STREET RE-ALIGNMENT', RECORDED IN DOC. NO. 2011039226, OFFICIAL RECORDS, NUECES COUNTY, TEXAS.

(Sheet 7 of 9)

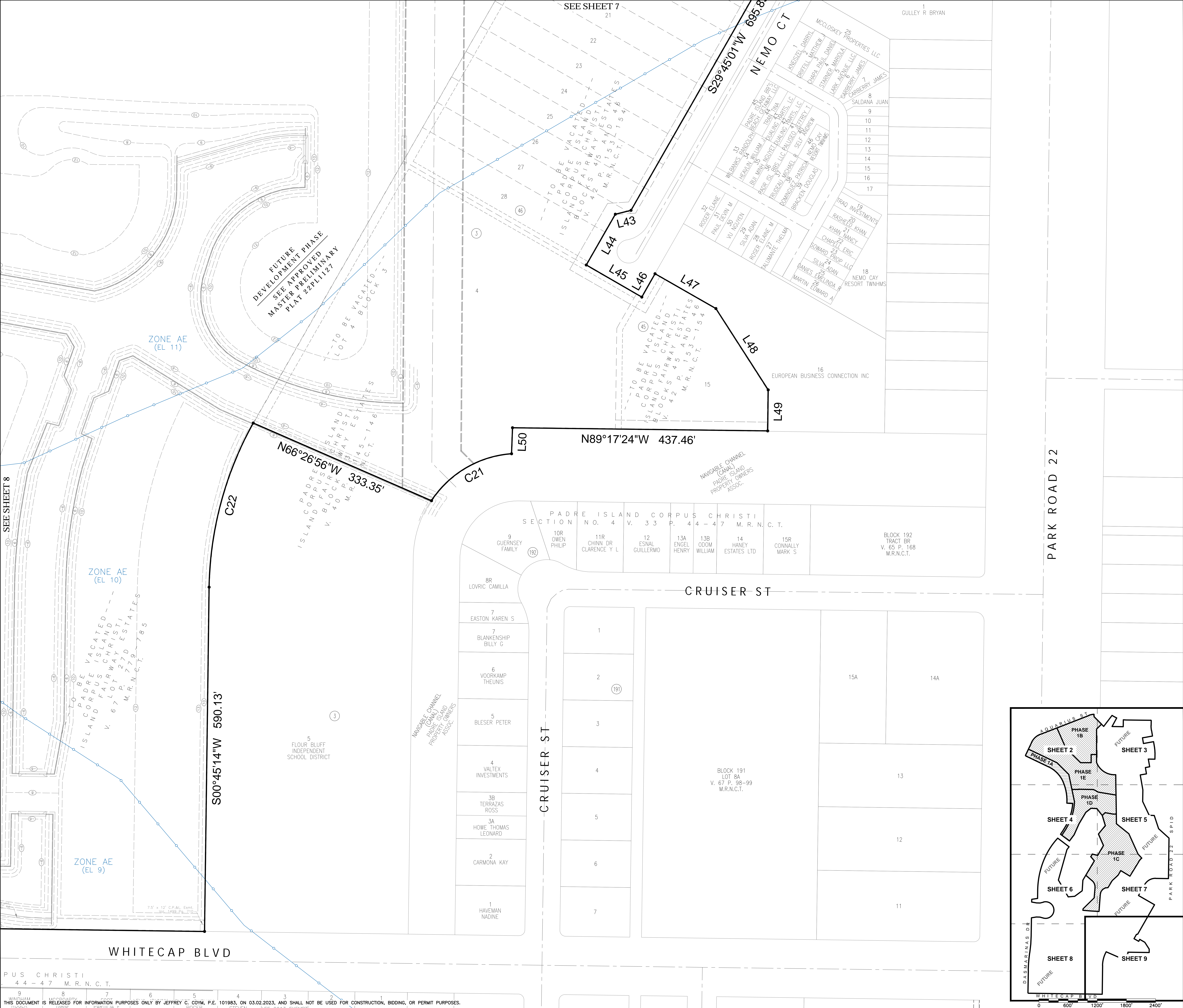


LJA ENGINEERING
TEXAS ENGINEERING FIRM F-1386
TEXAS SURVEYING FIRM 10014001
5360 S. Staples Street, Suite 425
Corpus Christi, Texas 78411
phone: 361.991.8550
www.LJA.com

LJA C986-21143

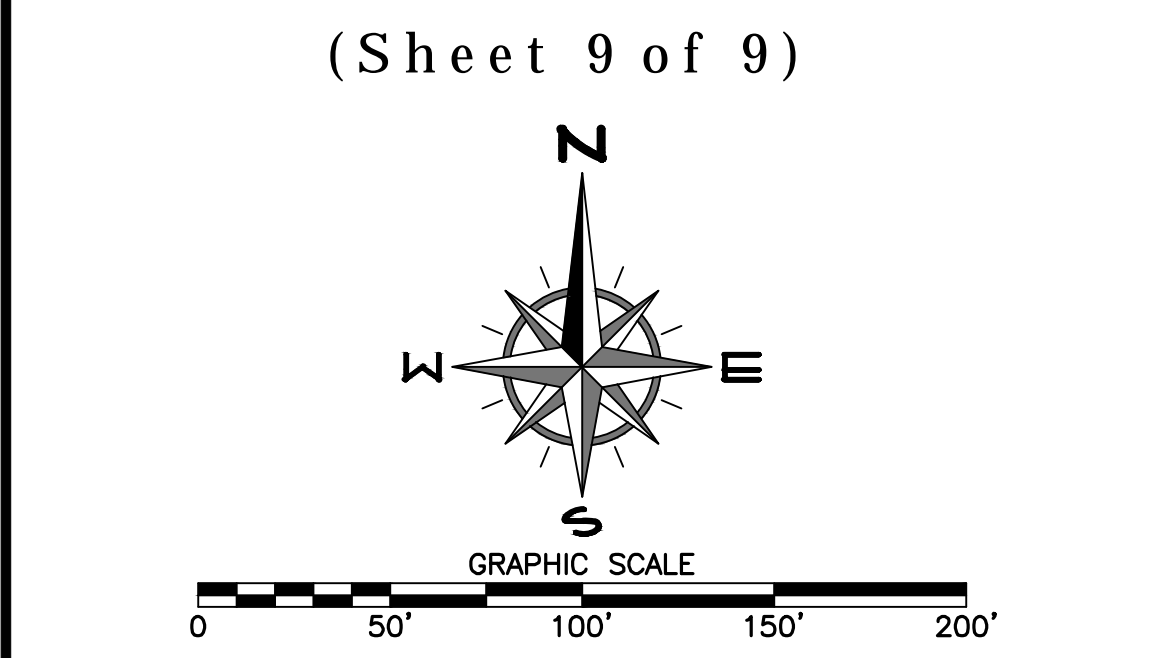
BOUNDARY LINE DATA					
NO.	BEARING	LENGTH	NO.	BEARING	LENGTH
L1	N07°12'31"E	9.87'	L26	S89°15'33"E	198.76'
L2	N81°19'28"E	101.69'	L27	S00°42'49"W	99.93'
L3	S89°05'55"E	74.31'	L28	S10°06'06"E	110.22'
L4	S74°13'03"E	74.31'	L29	S79°38'09"W	155.16'
L5	S75°49'07"W	74.25'	L30	S80°04'16"W	54.93'
L6	N89°11'10"W	73.86'	L31	S09°55'44"E	119.53'
L7	N79°52'11"W	101.66'	L32	N79°37'29"E	210.45'
L8	N00°43'06"E	55.99'	L33	S09°59'42"E	133.72'
L9	N81°30'14"E	121.50'	L34	S00°54'41"W	135.04'
L10	N00°56'05"E	159.98'	L35	N89°09'11"W	136.86'
L11	N40°34'27"E	57.24'	L36	S10°22'07"E	160.91'
L12	S37°05'42"W	73.43'	L37	S80°14'25"W	89.00'
L13	N84°46'44"E	135.17'	L38	S09°45'35"E	132.00'
L14	N53°19'48"E	190.19'	L39	S79°55'10"W	130.87'
L15	N40°01'58"W	115.07'	L40	S87°44'57"E	104.73'
L16	S78°03'33"E	112.87'	L41	S29°47'00"W	170.73'
L17	N16°54'25"W	220.32'	L42	S29°52'06"W	87.94'
L18	N39°02'15"W	180.41'	L43	S78°11'24"W	27.65'
L19	N87°28'42"W	120.19'	L44	S29°47'04"W	100.29'
L20	S51°27'50"W	135.13'	L45	S59°59'36"E	109.90'
L21	S36°57'48"W	160.17'	L46	S29°38'51"E	45.99'
L22	N86°00'41"W	119.90'	L47	S60°12'57"E	120.20'
L23	S02°16'21"E	47.77'	L48	S32°44'41"E	165.63'
L24	S28°44'12"W	200.97'	L49	S00°41'24"W	70.34'
L25	N07°49'34"E	141.97'	L50	S02°01'48"W	44.63'

BOUNDARY CURVE DATA							
NO.	Δ	RADIUS	LENGTH	TANGENT	CHORD	CH. BEARING	
C1	90°27'24"	9.98'	15.76'	10.06'	14.17'	N43°40'56"W	
C2	08°00'35"	2652.84'	370.85'	185.73'	370.55'	N04°48'03"E	
C3	07°38'43"	2359.67'	341.55'	171.03'	341.30'	S04°48'55"W	
C4	209°54'23"	169.95'	622.62'	---	328.39'	N00°46'04"E	
C5	25°06'31"	1698.20'	744.20'	378.17'	738.26'	N13°06'15"E	
C6	15°11'13"	1430.48'	379.17'	190.70'	378.06'	N33°06'58"E	
C7	34°06'20"	104.62'	62.28'	32.09'	61.36'	S31°30'06"W	
C8	10°02'48"	1718.10'	301.27'	151.02'	300.88'	S30°32'33"W	
C9	21°00'26"	1056.90'	387.52'	195.96'	385.35'	S14°46'46"W	
C10	28°07'40"	940.79'	461.85'	235.68'	457.23'	N10°33'02"W	
C11	32°27'31"	617.98'	425.59'	221.62'	417.23'	S44°45'25"E	
C12	89°57'56"	15.00'	23.55'	14.99'	21.21'	N19°31'01"W	
C13	43°17'02"	330.00'	249.30'	130.94'	243.41'	N47°06'27"E	
C14	18°31'58"	330.00'	106.74'	53.84'	106.28'	N78°00'59"E	
C15	11°09'02"	562.11'	109.43'	54.89'	109.26'	N82°08'00"W	
C16	06°33'37"	49.390'	56.55'	28.31'	56.52'	N86°16'00"W	
C17	88°58'58"	10.00'	15.70'	10.00'	14.14'	N44°18'50"W	
C18	10°52'08"	553.81'	105.06'	52.89'	104.90'	N04°55'45"W	
C19	11°32'55"	463.32'	93.39'	46.85'	93.23'	N04°17'20"W	
C20	60°59'25"	254.65'	271.07'	149.27'	258.45'	S80°13'32"W	
C21	52°37'04"	179.52'	164.86'	88.76'	159.13'	N59°36'20"E	
C22	28°01'30"	601.61'	294.28'	150.14'	291.34'	N15°04'01"E	



Preliminary Plat
WHITECAP
NORTH PADRE ISLAND

BEING 241.836 ACRES OUT OF A PORTION OF TRACT 27C AND 27D OF THE PADRE ISLAND - CORPUS CHRISTI ISLAND FAIRWAY ESTATES, HEREINAFTER REFERRED TO AS P.I.C.C.I.F.E., LOTS 27C AND 27D, A MAP OF WHICH IS RECORDED IN VOL. 67, PG. 779-785, MAP RECORDS, NUECES COUNTY, TEXAS, A PORTION OF P.I.C.C.I.F.E., BLOCKS 45 & 46, A MAP OF WHICH IS RECORDED IN VOL. 42, PG. 153-154, MAP RECORDS, NUECES COUNTY, TEXAS, A PORTION OF P.I.C.C.I.F.E., BLOCK 3, A MAP OF WHICH IS RECORDED IN VOL. 40, PG. 145-146, MAP RECORDS, NUECES COUNTY, TEXAS, ALL OF P.I.C.C.I.F.E., BLOCKS 37, 38, 39, AND 40, A MAP OF WHICH IS RECORDED IN VOL. 41, PG. 128-129, MAP RECORDS, NUECES COUNTY, TEXAS, A PORTION OF P.I.C.C.I.F.E., BLOCKS 24-35, A MAP OF WHICH IS RECORDED IN VOL. 40, PG. 154-159, MAP RECORDS, NUECES COUNTY, TEXAS, A PORTION OF P.I.C.C.I.F.E., BLOCKS 43 & 44, A MAP OF WHICH IS RECORDED IN VOL. 42, PG. 10-11, MAP RECORDS, NUECES COUNTY, TEXAS, AND PORTIONS OF P.I.C.C.I.F.E., BLOCKS 34, 35, AND 36, A MAP OF WHICH IS RECORDED IN VOL. 40, PG. 183-184, MAP RECORDS, NUECES COUNTY, TEXAS, SAID BLOCKS 26, 35, 36, 43, 44, AND A PORTION OF BLOCK 34 NOW VACATED AS PER PLAT RECORDED IN VOL. 67, PG. 686, MAP RECORDS, NUECES COUNTY, TEXAS, SAID 241.836 ACRES ALSO BEING REFERENCED IN CORRECTION WARRANTY DEED, DOC. NO. 2018045542, OFFICIAL RECORDS, NUECES COUNTY, TEXAS, AND DESCRIBED BY METES & BOUNDS OF A 28.629 ACRE TRACT (TRACT 1), A 72.316 ACRE TRACT (TRACT 2), A 74.440 ACRE TRACT (TRACT 3), AND A 30.884 ACRE TRACT (TRACT 4), AND SPECIAL WARRANTY DEED, DOC. NO. 2022027962, OFFICIAL RECORDS, NUECES COUNTY, TEXAS, AND DESCRIBED BY METES & BOUNDS OF A 39.60 ACRE TRACT, SAVE & EXCEPT 3.786 ACRES OF A 60-FOOT WIDE STREET TRACT, ALSO KNOWN AS 'AQUARIUS STREET RE-ALIGNMENT', RECORDED IN DOC. NO. 2011039226, OFFICIAL RECORDS, NUECES COUNTY, TEXAS.



LJA ENGINEERING
TEXAS ENGINEERING FIRM F-1386
TEXAS SURVEYING FIRM 10014001
5350 S. Staples Street, Suite 425
Corpus Christi, Texas 78411
phone: 361.991.8550
www.LJA.com

LJA C986-21143

BOUNDARY LINE DATA					
NO.	BEARING	LENGTH	NO.	BEARING	LENGTH
L1	N07°12'31"E	9.87'	L26	S89°15'33"E	198.76'
L2	N81°19'28"E	101.69'	L27	S00°42'49"W	99.93'
L3	S89°05'55"E	74.31'	L28	S10°06'06"E	110.22'
L4	S74°13'03"E	74.31'	L29	S79°38'09"W	155.16'
L5	S75°49'07"W	74.25'	L30	S80°04'16"W	54.93'
L6	N89°11'10"W	73.86'	L31	S09°55'44"E	119.53'
L7	N79°52'11"W	101.66'	L32	N79°37'29"E	210.45'
L8	N00°43'06"E	55.99'	L33	S09°59'42"E	133.72'
L9	N81°30'14"E	121.50'	L34	S00°54'41"W	135.04'
L10	N00°56'05"E	159.98'	L35	N89°09'11"W	136.86'
L11	N40°34'27"E	57.24'	L36	S10°22'07"E	160.91'
L12	S37°05'42"W	73.43'	L37	S80°14'25"W	89.00'
L13	N84°46'44"E	135.17'	L38	S09°45'35"E	132.00'
L14	N53°19'48"E	190.19'	L39	S79°55'10"W	130.87'
L15	N40°01'58"W	115.07'	L40	S87°44'57"E	104.73'
L16	S76°03'33"E	112.87'	L41	S29°47'00"W	170.73'
L17	N16°54'25"W	220.32'	L42	S29°52'06"W	87.94'
L18	N39°02'15"W	180.41'	L43	S78°11'24"W	27.65'
L19	N87°28'42"W	120.19'	L44	S29°47'04"W	100.29'
L20	S51°27'50"W	135.13'	L45	S59°59'36"E	109.90'
L21	S36°57'46"W	160.17'	L46	S29°38'51"E	45.99'
L22	N86°00'41"W	119.90'	L47	S60°12'57"E	120.20'
L23	S02°16'21"E	47.77'	L48	S32°44'41"E	165.63'
L24	S28°44'12"W	200.97'	L49	S00°41'24"W	70.34'
L25	N07°49'34"E	141.97'	L50	S02°01'48"W	44.63'

BOUNDARY CURVE DATA					
NO.	Δ	RADIUS	LENGTH	TANGENT	CHORD
C1	90°27'24"	9.98'	15.76'	10.06'	14.17'
C2	08°00'35"	2652.84'	370.85'	185.73'	370.55'
C3	07°38'43"	2359.67'	341.59'	171.03'	341.30'
C4	209°54'23"	169.95'	622.62'	—	328.39'
C5	25°06'31"	1698.20'	744.20'	378.17'	738.26'
C6	15°11'13"	1430.48'	379.17'	190.70'	378.06'
C7	34°06'20"	104.62'	62.28'	32.09'	61.36'
C8	10°02'48"	1718.10'	301.27'	151.02'	300.88'
C9	21°00'26"	1056.90'	387.52'	195.96'	385.35'
C10	28°07'40"	940.79'	461.85'	235.68'	457.23'
C11	38°27'31"	617.68'	425.59'	221.62'	417.23'
C12	89°57'56"	15.00'	23.55'	14.99'	21.21'
C13	43°17'02"	330.00'	249.30'	130.94'	243.41'
C14	18°31'58"	330.00'	106.74'	53.84'	106.28'
C15	11°09'02"	562.11'	109.43'	54.89'	109.26'
C16	06°33'37"	493.90'	56.55'	28.31'	56.52'
C17	88°58'58"	10.00'	15.70'	10.00'	14.14'
C18	10°52'08"	553.81'	105.06'	52.89'	104.90'
C19	11°32'55"	463.32'	93.39'	46.85'	93.23'
C20	60°59'25"	254.65'	271.07'	149.27'	258.45'
C21	52°37'04"	179.52'	164.86'	88.76'	159.13'
C22	28°01'30"	601.61'	294.28'	150.14'	291.34'