



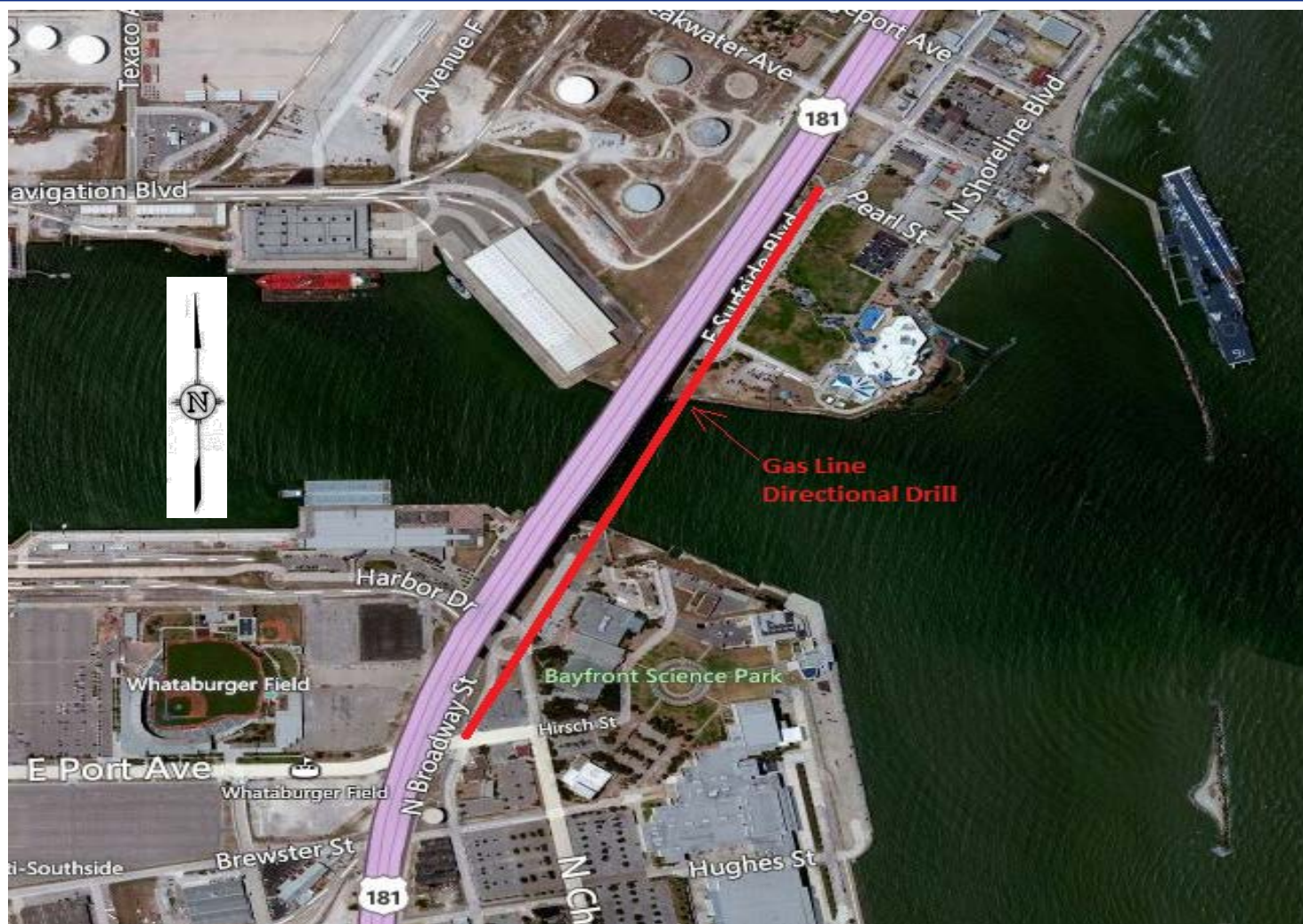
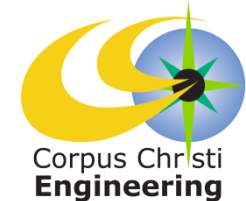
CORPUS CHRISTI SHIP CHANNEL GAS MAIN CROSSING

City Council Presentation
April 23, 2013



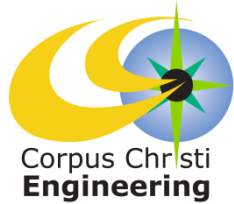


CORPUS CHRISTI SHIP CHANNEL GAS MAIN CROSSING





Project Schedule



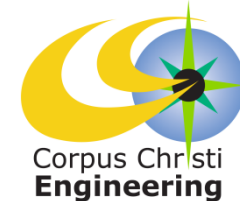
2013									2014		
Apr	May	Jun	Jul	Aug	Sep	Oct	Nov	Dec	Jan	Feb	Mar
	Design			Bid & Award			Construction				

Projected 10 Month Total Project Duration





Project Budget

**PROJECT FUNDS AVAILABLE:**

Gas CIP FY 2012-2013.....	\$379,600.00
Gas CIP FY 2013-2014.....	295,200.00
TOTAL.....	\$674,800.00

FUNDS REQUIRED:

Construction (preliminary estimate).....	\$436,200.00
Contingency (10%).....	43,620.00

Engineer Fees:

Engineer (HDR Engineering)	68,300.00
Geotechnical Study and Testing (TBD).....	13,496.00

Reimbursements:

TOTAL.....	\$70,854.00
-------------------	--------------------

ESTIMATED PROJECT BUDGET BALANCE.....	\$42,330.00
--	--------------------

