



# Flour Bluff Collection Center



Council Presentation  
August 25, 2015

<b><u>Solid Waste Department</u></b>	<b>ADOPTED 2014-2015</b>	<b>2015-2016</b>	<b>2016-2017</b>	<b>2017-2018</b>	<b>2018-2019</b>
<b>REVENUE</b>	<b>37,279,134</b>	<b>38,172,400</b>	<b>38,553,657</b>	<b>38,938,821</b>	<b>39,327,932</b>
<b>Decision Packages:</b>					
\$1 rate reduction for Carts		(1,100,000)	(1,100,000)	(1,100,000)	(1,100,000)
Revenue after \$1 rate reduction		<b>37,072,400</b>	<b>37,453,657</b>	<b>37,838,821</b>	<b>38,227,932</b>
<b>\$1 rate increase for \$14.5M Debt</b>		<b>1,100,000</b>	<b>1,100,000</b>	<b>1,100,000</b>	<b>1,100,000</b>
Add \$0.60 Fee Increase		660,000	660,000	660,000	660,000
<b>Rate Increase-.10/month in 2017, .15 in 2018 &amp; 2019</b>			<b>110,000</b>	<b>276,500</b>	<b>444,500</b>
<b>Expenditures</b>	<b>27,681,250</b>	<b>28,071,197</b>	<b>28,471,827</b>	<b>28,883,554</b>	<b>29,306,817</b>
<b>Decision Packages:</b>					
Equipment Lease Purchase		65,000	314,000	490,000	500,000
Expenditure after increase in leases		<b>28,136,197</b>	<b>28,785,827</b>	<b>29,373,554</b>	<b>29,806,817</b>
<b>\$14.5M in Add'l Debt</b>		<b>984,000</b>	<b>984,000</b>	<b>984,000</b>	<b>984,000</b>
<b>SW Contribution to General Fund</b>	<b>9,597,884</b>	<b>9,597,884</b>	<b>9,597,884</b>	<b>9,597,884</b>	<b>9,597,884</b>
SW Contrib.-rate red./Add leases		8,936,202	8,667,830	8,465,267	8,421,115
Surplus (Shortfall)		(661,681)	(930,053)	(1,132,616)	(1,176,769)
Add \$0.60 Fee Increase		660,000	660,000	660,000	660,000
Surplus (Shortfall)		(1,681)	(270,053)	(472,616)	(516,769)
\$14.5M in Add'l Debt		(984,000)	(984,000)	(984,000)	(984,000)
Surplus (Shortfall)		(985,681)	(1,254,053)	(1,456,616)	(1,500,769)
\$1 rate increase for \$14.5M Debt		1,100,000	1,100,000	1,100,000	1,100,000
Surplus (Shortfall)		114,319	(154,053)	(356,616)	(400,769)
Rate Increase-.10/month in 2017, .15 in 2018 & 2019			110,000	276,500	444,500
Surplus (Shortfall)			(44,053)	(80,116)	43,731
<b>Rates:</b>					
<b>Residential</b>	<b>24.31</b>	<b>24.91</b>	<b>25.01</b>	<b>25.16</b>	<b>25.31</b>
<b>Commercial</b>	<b>43.43</b>	<b>44.63</b>	<b>44.83</b>	<b>45.13</b>	<b>45.43</b>



# Approved Solid Waste Capital Projects



➤ Six approved \$14.5M Certificates of Obligation Projects:

1. Flour Bluff Collection Center
2. JC Elliott Office Building
3. Pavement/Life Cycle Replacement
4. Cefe Valenzuela Landfill Disposal Cell Interim Cover
5. Cefe Valenzuela Landfill Disposal Cell Construction 1B and 1C
6. Cefe Valenzuela Landfill Outfall Modifications



# Flour Bluff Collection Center



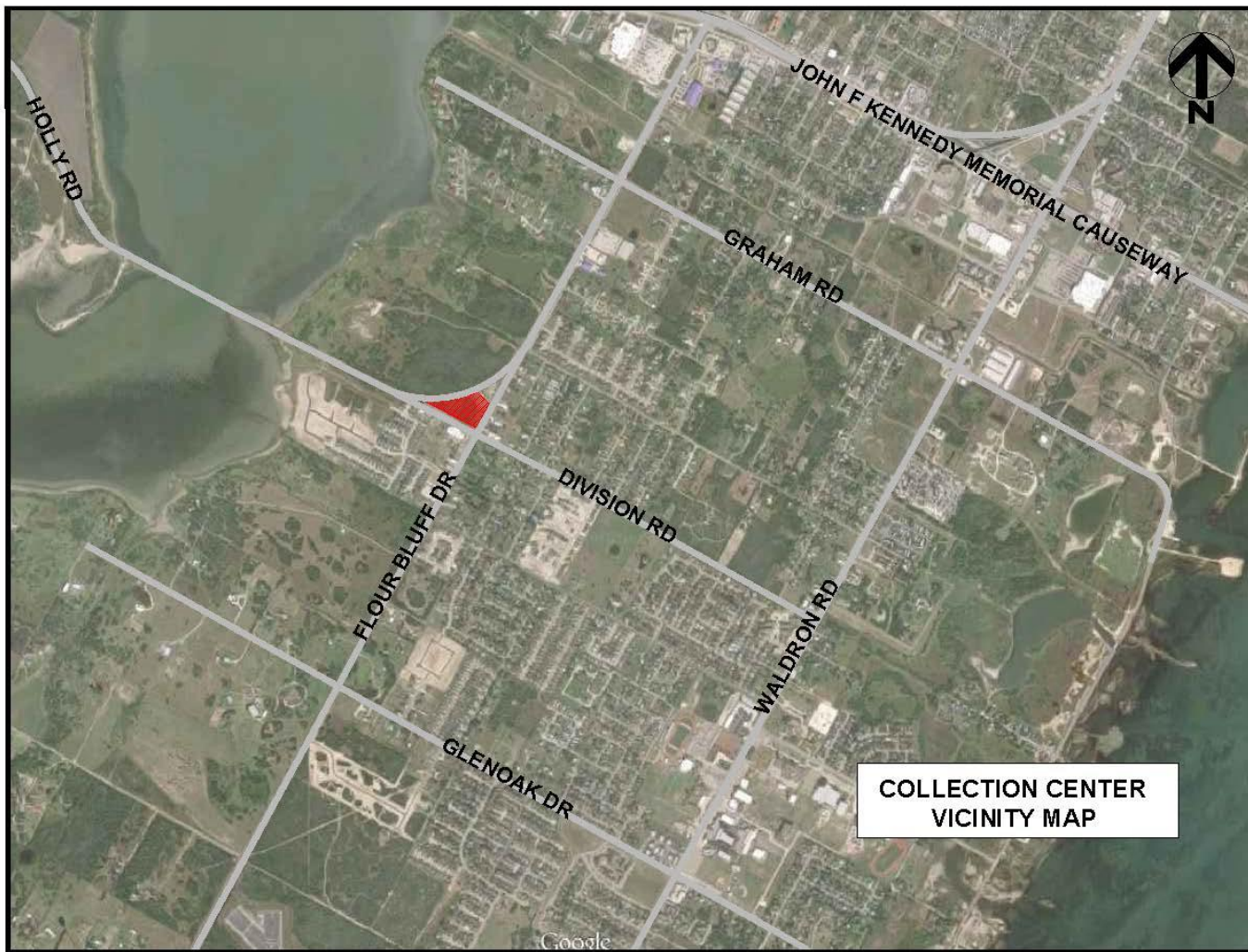
- Total Project Budgeted Cost - \$4.650M
  - Funding Source:
    - ✓ Certificates of Obligation
- Operating Costs - \$293K
  - Includes 4 FTEs
  - Funding Source:
    - ✓ Solid Waste Revenues
    - ✓ Covered by customer growth
    - ✓ Will not require an increase in rates



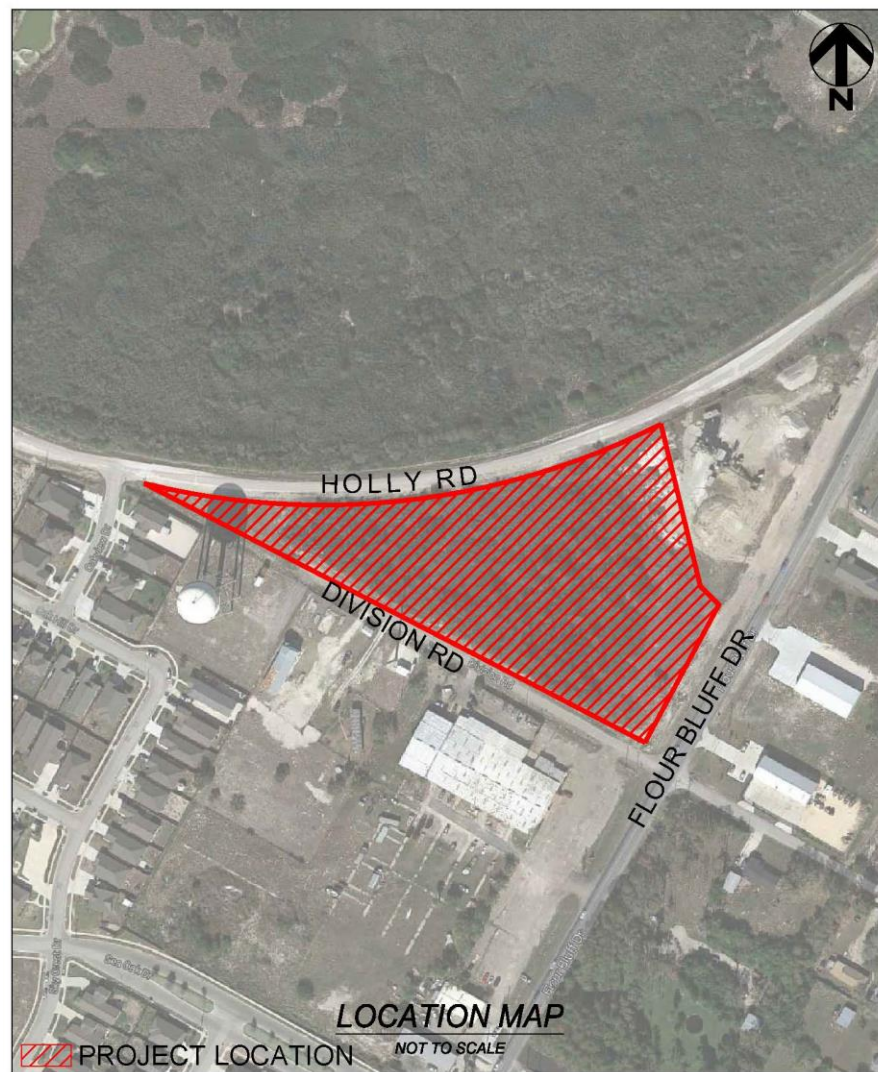
# Flour Bluff Collection Center



- Provides easy drop-off for:
  - Brush
  - Bulky items
  - Tires
  - Used Motor Oil
  - Household Hazardous Waste
  - Electronics (E-Waste)
  - Single-stream Recycling (Blue Bins)
- Covered drop-off area
- Concrete all-weather pads & driveways
- Screened Fencing around property
- Access from Holly Road
- Video security
- Staffed during operating hours
  - Thursday through Sunday
  - Open to public 8 hours
  - Staffed 10 hours









# Conceptual Project Layout



**draft**







# Conceptual Project Layout



**draft**





# Conceptual Project Layout



**draft**



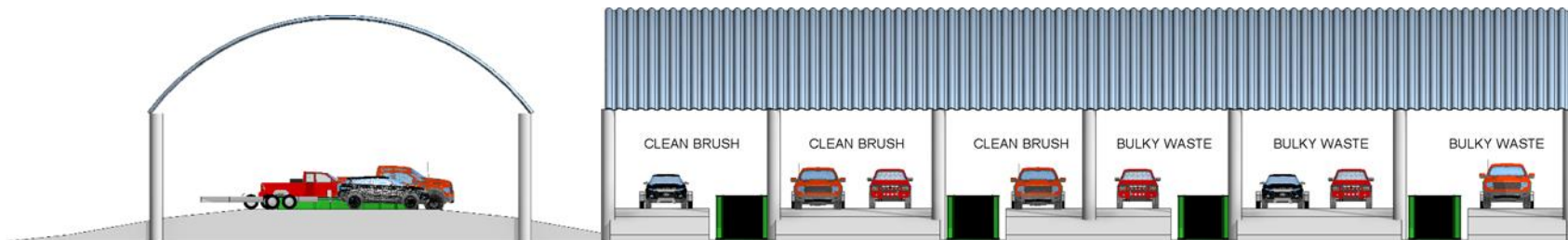
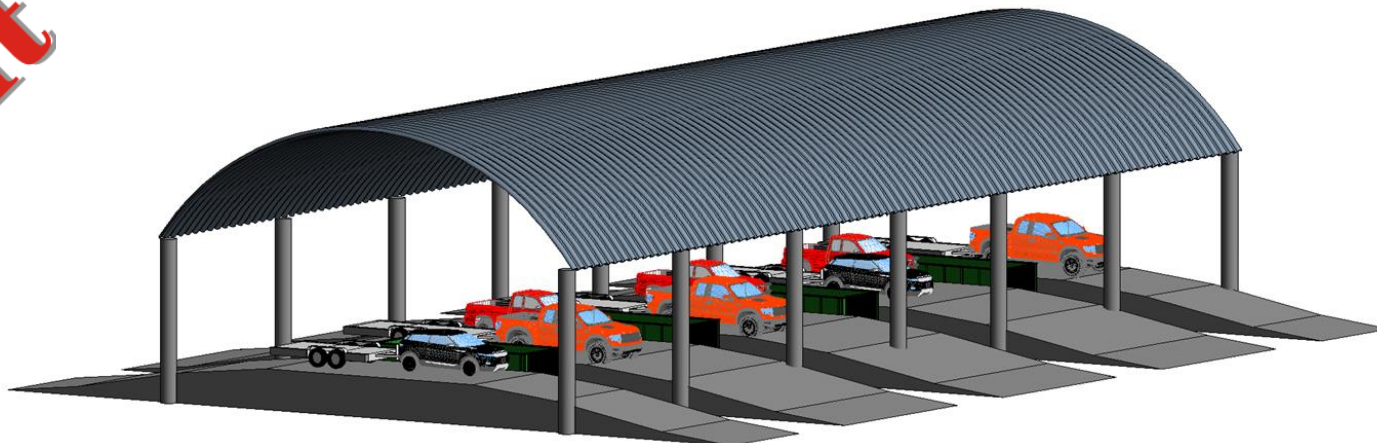
**Three-Dimensional Perspective, As Seen from  
the Flour Bluff Drive/Division Street Intersection**



# Conceptual Project Layout



**draft**

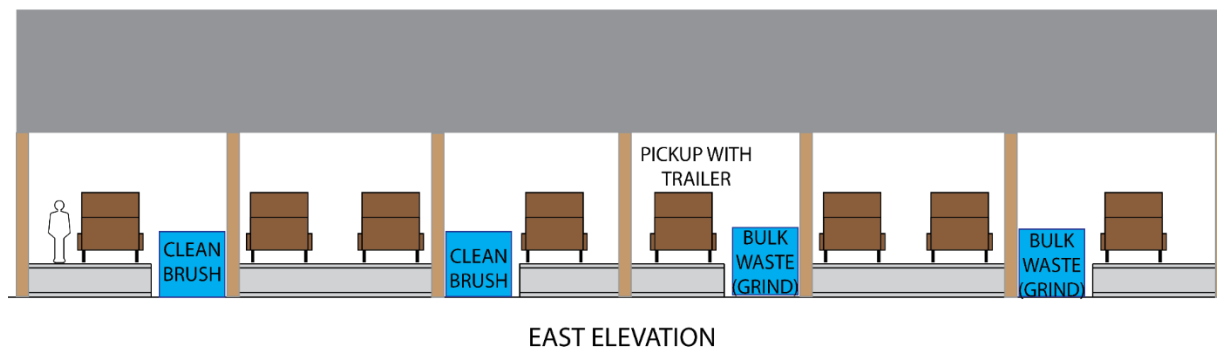
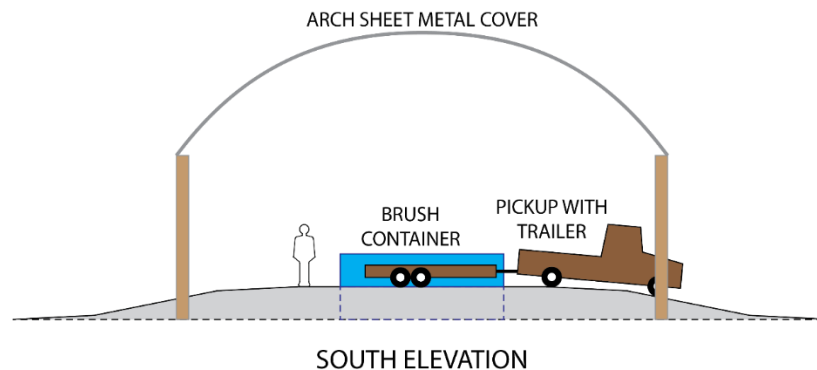




# Conceptual Project Layout



**draft**







# Conceptual Project Layout



**draft**



- |           |                      |
|-----------|----------------------|
| HALL      | STORAGE              |
| MECH      | TRAINING / CLASSROOM |
| MEN'S     | UNISEX               |
| OFFICE    | WAITING              |
| RECEPTION | WOMEN'S              |



NORTH ELEVATION - ENTRANCE



~1,600 sf, excluding porches





# Conceptual Perimeter Fencing



**draft**



**Lightweight Cast Concrete Panels**

**Chain Link with Colored Slats**



# Next Steps



Flour Bluff Collection Center Project Timeline																			
	July		August 2015					September 2015				October 2015				November 2015			
Activity	27-Jul	3-Aug	10-Aug	17-Aug	24-Aug	31-Aug	7-Sep	14-Sep	21-Sep	28-Sep	5-Oct	12-Oct	19-Oct	26-Oct	2-Nov	9-Nov	16-Nov	23-Nov	
Conceptual Design																			
Council Presentation (Resolution to Proceed)																			
Develop & Issue RFQ/P																			
Prelim Design																			
Public Mtgs/Workshops																			
RFQ/P for Design & Construction																			
Council Award																			
Design/Construction																			



# Questions?