



# **Zoning Case #0815-03 The Clower Company**

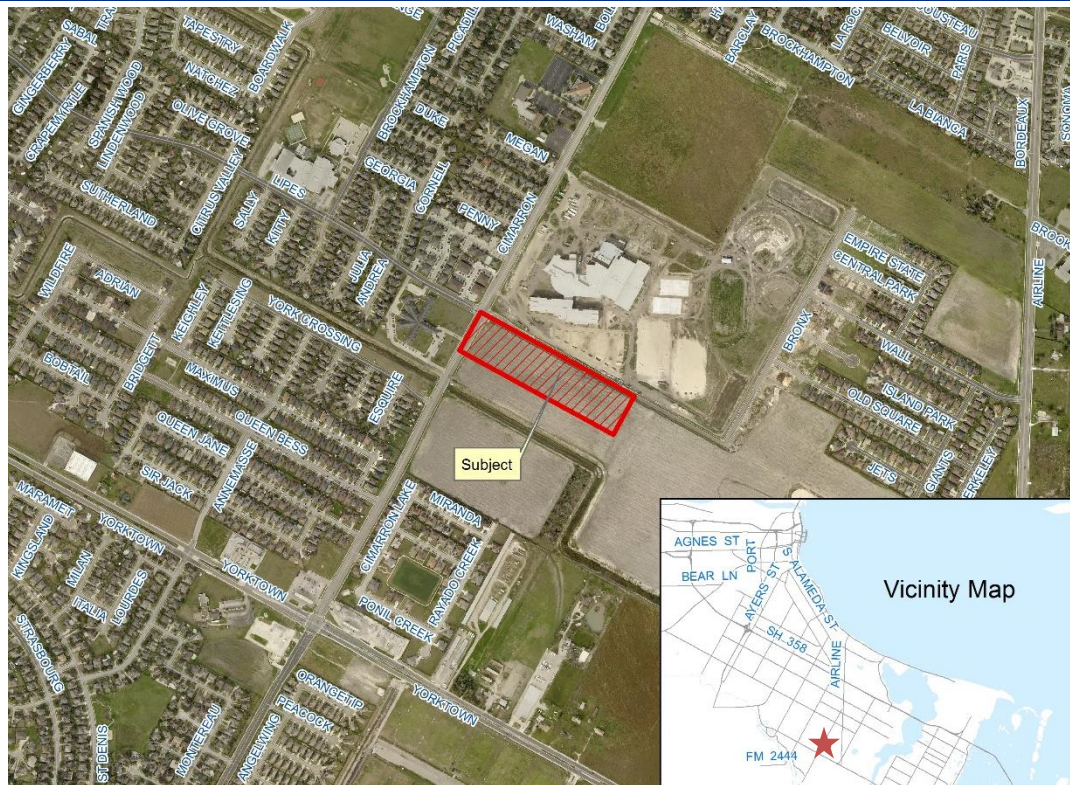
**From:** "FR" Farm Rural District

**To:** "CN-1" Neighborhood Commercial District

Planning Commission  
Presentation  
August 26, 2015

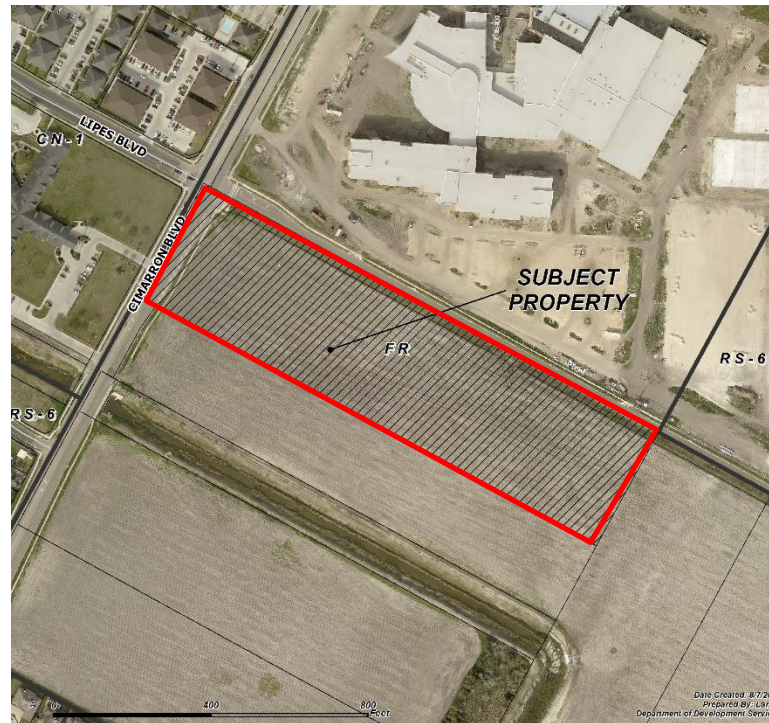


# Aerial Overview



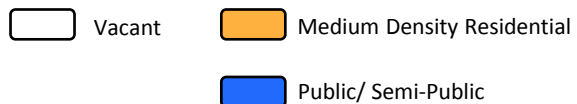
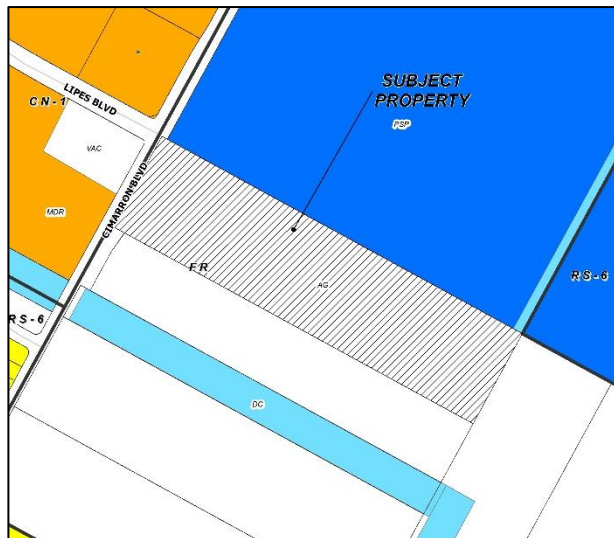


# Aerial

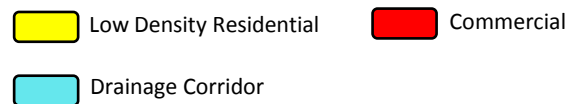
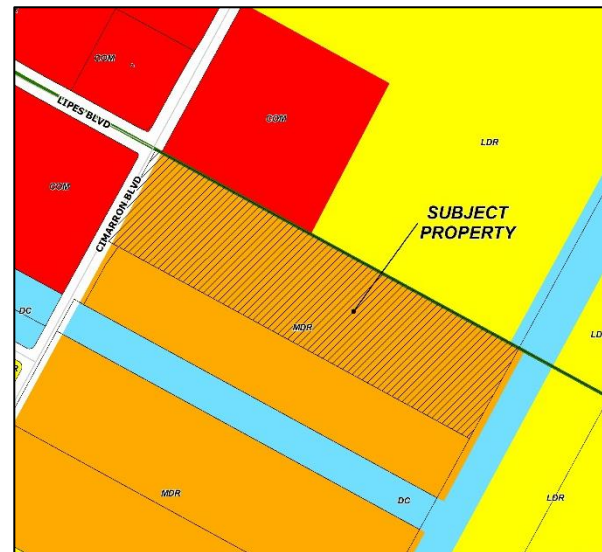




## Existing Land Use



## Future Land Use









# Facing East Across Cimarron Boulevard

---





## West Across Cimarron Boulevard from Subject Property

---







# South on Cimarron Boulevard

---







# North on Cimarron Boulevard





# Facing South Across Lipes Boulevard

---





# Facing North Across Lipes Boulevard From Subject Property

---





# Facing West on Lipes Boulevard Toward Cimarron Boulevard

---







# Facing East on Lipes Boulevard





# Public Notification

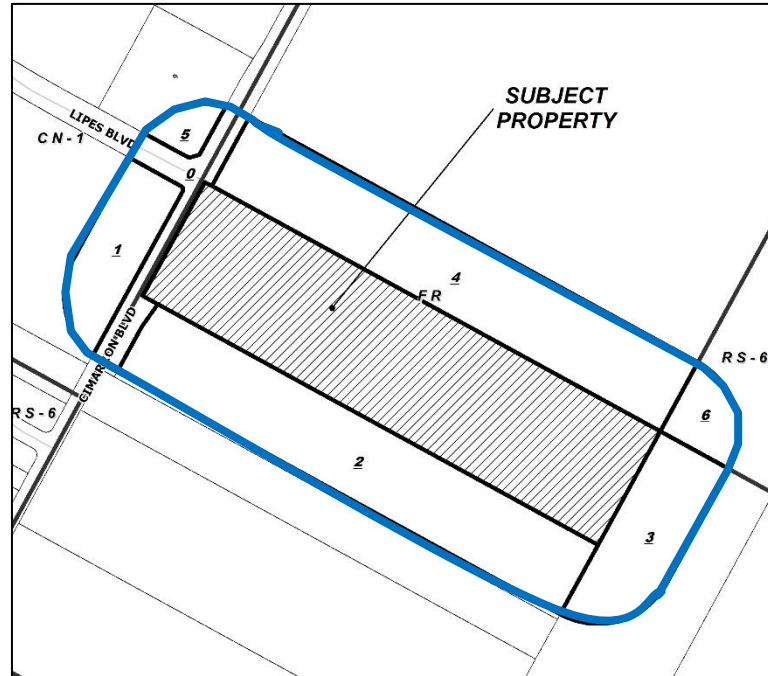
6 Notices mailed inside 200' buffer  
7 Notices mailed outside 200' buffer

Notification Area

Opposed: 0 (0.00%)



In Favor: 0





# Staff Recommendation

---

**Approval of the “CN-1” Neighborhood  
Commercial District on approximately 4 acres  
at the intersection**

**Denial of the “CN-1” District on the back 4.922  
acres and, in lieu thereof, approval of the “RM-  
1” Multifamily 1 District**