



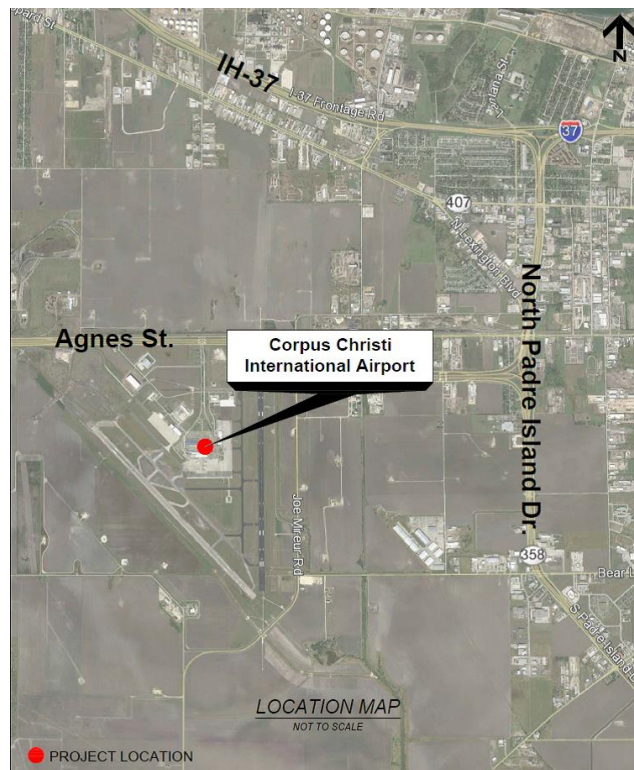
# Corpus Christi International Airport Professional Services Agreements for Capital Improvement Program Projects



Council Presentation  
February 9, 2016



# Location Map



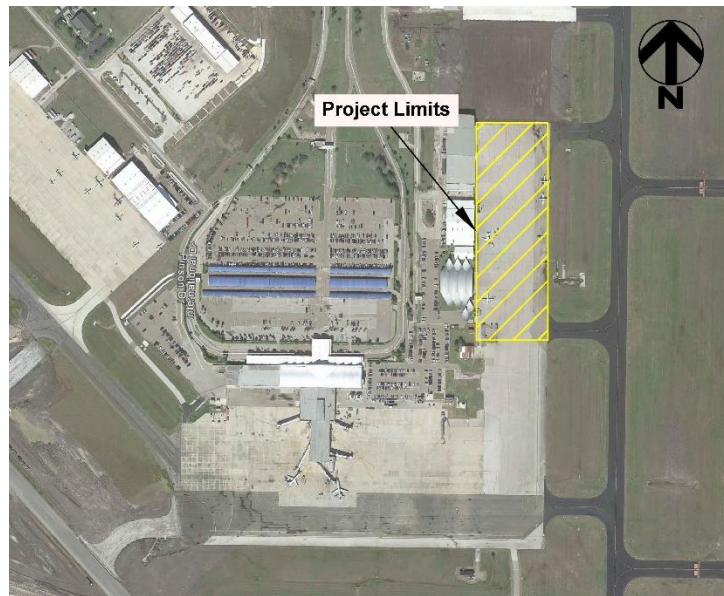


# Project Scope - KSA



## The project scope includes:

- KSA Task 1 – design paving improvements to the East General Aviation Apron
- 36,389 square yards of 16" reinforced Portland cement concrete pavement (PCCP) will replace existing Asphalt Pavement (HMAC)





# Project Scope - Garver



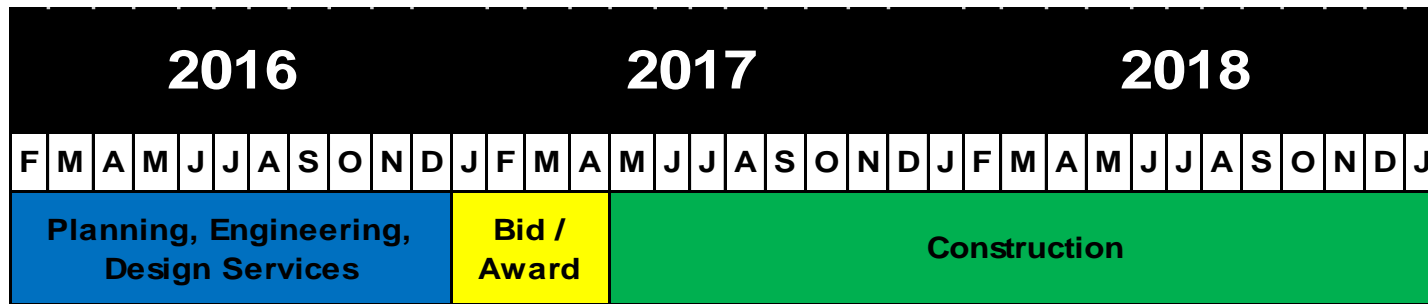
## The project scope includes:

- Garver Task 1 – design replacement and upgrades to CCIA Perimeter Fence
- 9 miles of existing 6' fencing will be replaced with 9 miles of 8' fencing with a concrete ribbon curb to prevent wildlife incursions





# Project Schedule



**Project Estimate: 1095 Calendar Days  $\approx$  36 Months**

Projected Schedule reflects City Council award in February 2016