

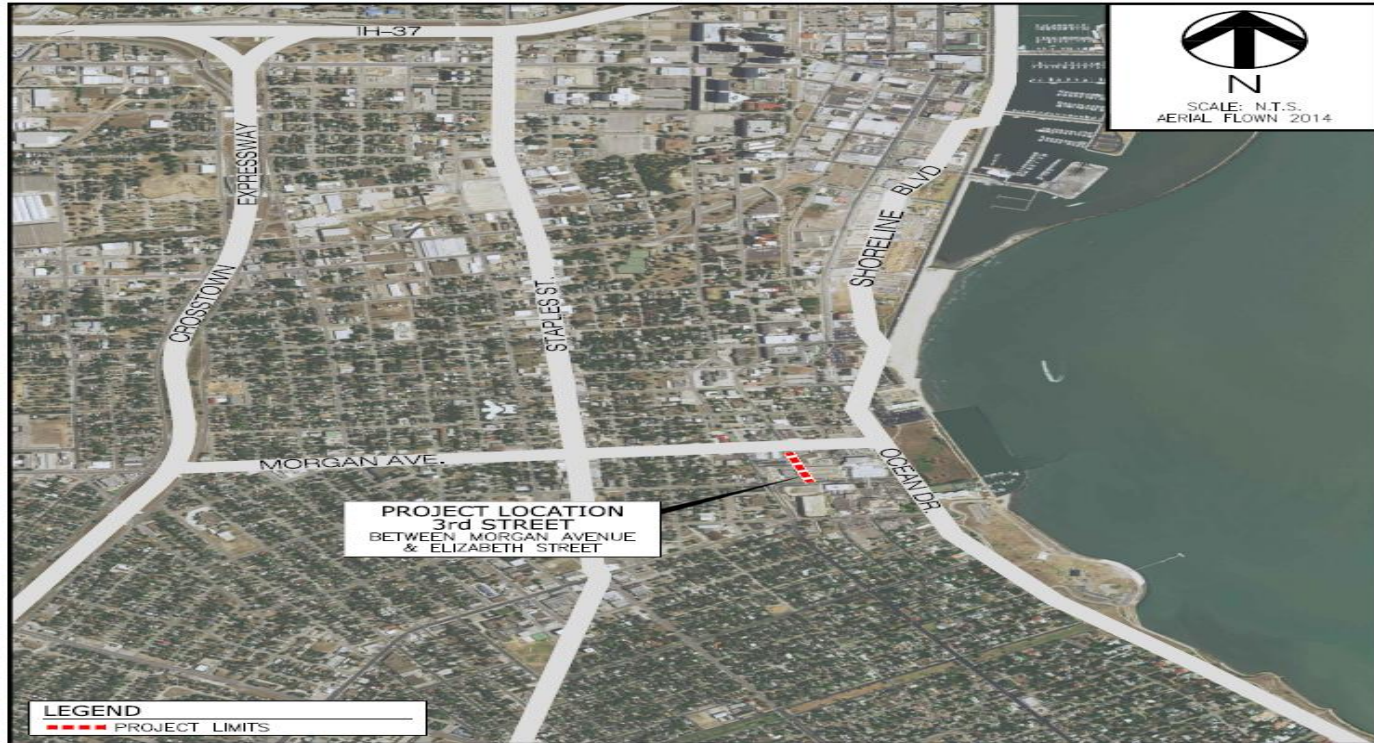
Removing One-Way Traffic Flow Along Third Street (Morgan Ave. to Elizabeth St.)



Council Presentation
March 29, 2016

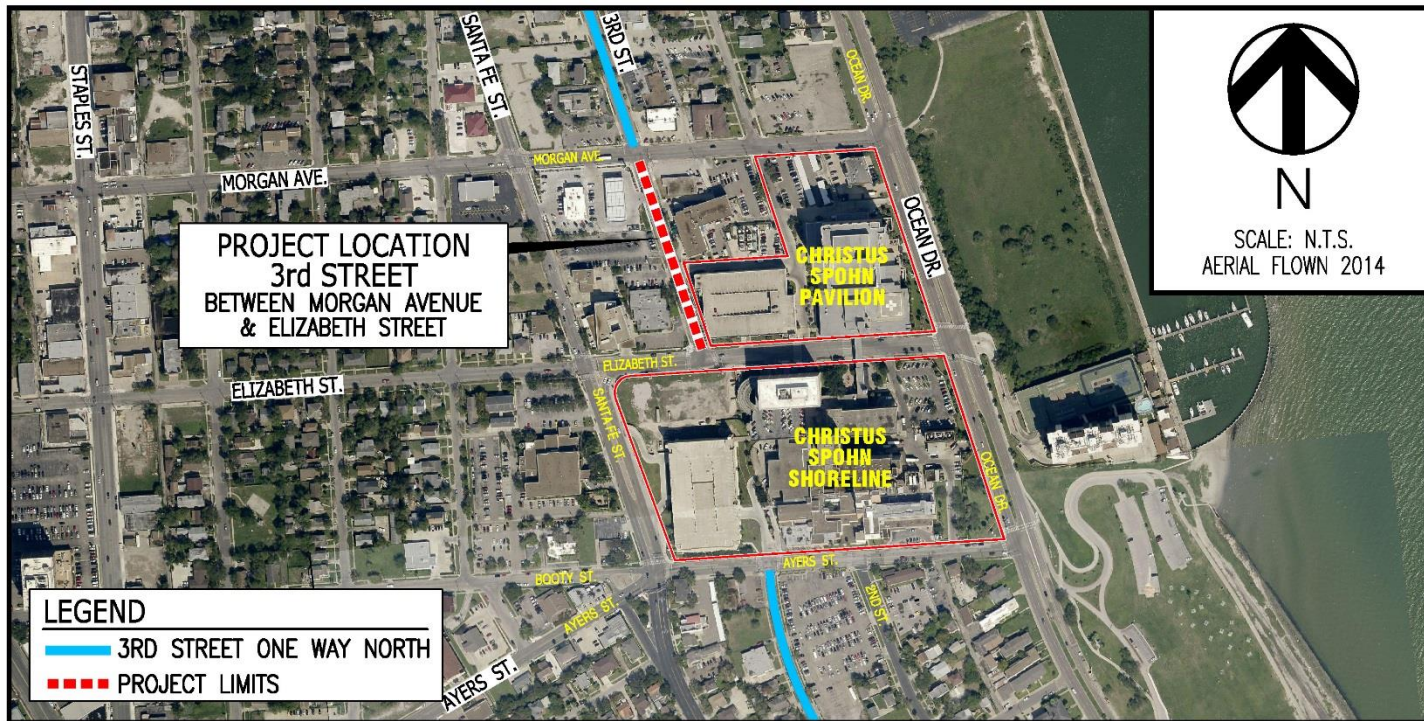
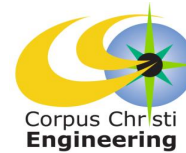


Location Map



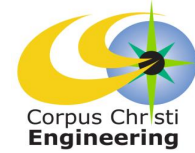


Vicinity Map





Project Scope

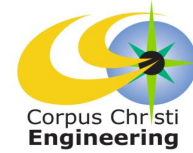


Transportation/Traffic Engineering Enhancements

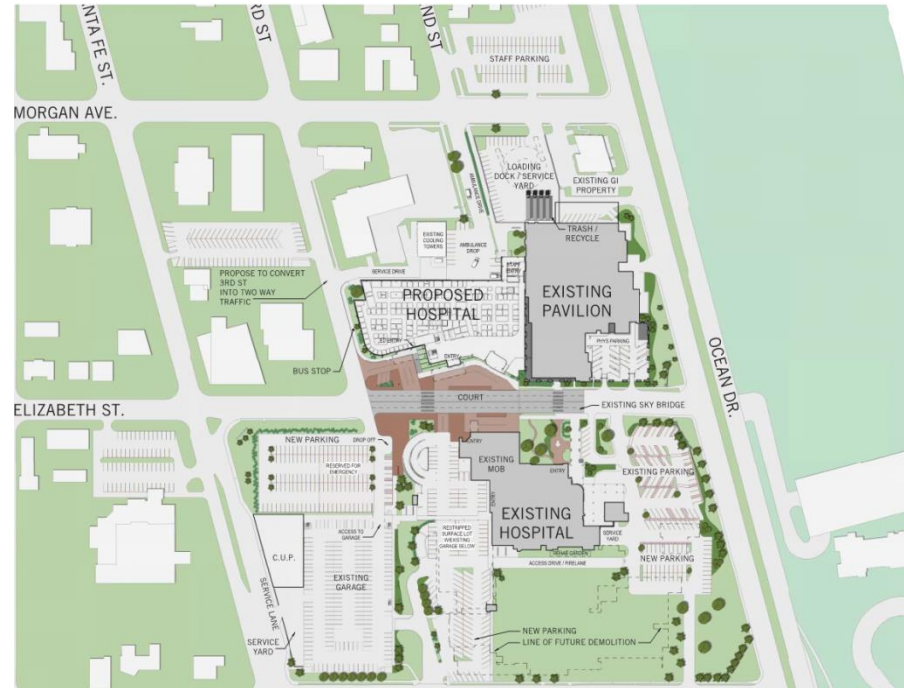
- Removal of One-Way Designation Along Third Street, Between Morgan Ave. and Elizabeth St. (**Ordinance Amendment**)
- Improved Access and Safety Enhancements for Patients, Visitors and Employees
- New Parking
- Replacing Signalized Intersection at Third St. & Elizabeth St. Into an All-Way STOP Intersection



Project Site Plan



Proposed CHRISTUS Spohn Shoreline Hospital Expansion





Project Site Plan

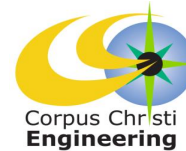


Proposed "Gateway" - Hospital Entry (Elizabeth Street)





Traffic Impact Analysis (TIA)

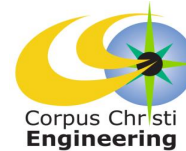


Findings & Recommendations :

- Remove the One-Way Designation Along Third St. (Morgan Ave. to Elizabeth St.) (**Ordinance Amendment**)
- Convert the Signalized Intersection at Third St. & Elizabeth St. into an All-Way STOP Intersection
- Hospital Expansion Will Not Adversely Affect Existing Traffic Flow Around the Surrounding Streets
- Level of Service (LOS) Meets Current City Requirements
- Improved Pedestrian Access



Project Schedule



Proposed Spohn Hospital Expansion Timeline:

- Design Phase: January 2015 – May 2016
- Construction Phase: December 2015 – December 2018

***The Proposed Ordinance Amendment Will Become Effective When Existing ONE-WAY Signs Along Third Street Are Removed**