

Harbor Bridge Replacement Project

Corpus Christi, Texas

Enhancements to Mobility for City of Corpus Christi



April 19, 2016



Flatiron/Dragados USA, JV

Equity Owner: Flatiron Constructors,
Inc.

Dragados USA, Inc.

Team includes:

- cable-stayed bridge experts;
- proven local Texas designers and contractors;
- leaders in delivering design-build projects in North America.



**Longest Cable Stay Span in North America
1,655' Main Span**



Rendering View from Whataburger Field



Rendering View from Whataburger Field at Night



**Corpus Christi: A Beacon of Coastal Beauty
Iconic Nighttime Aesthetics**

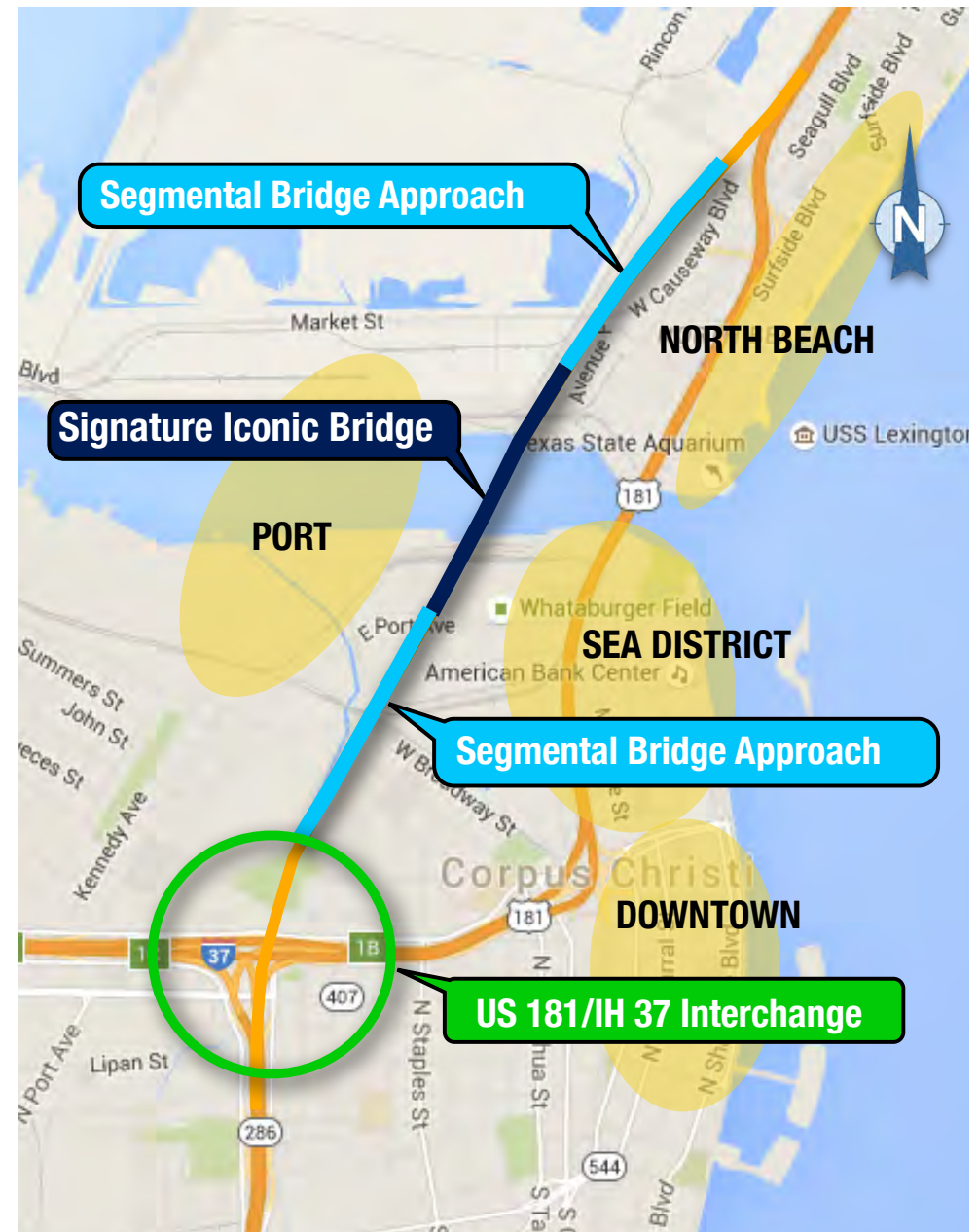
Interchange Enhancements

Enhanced Connectivity

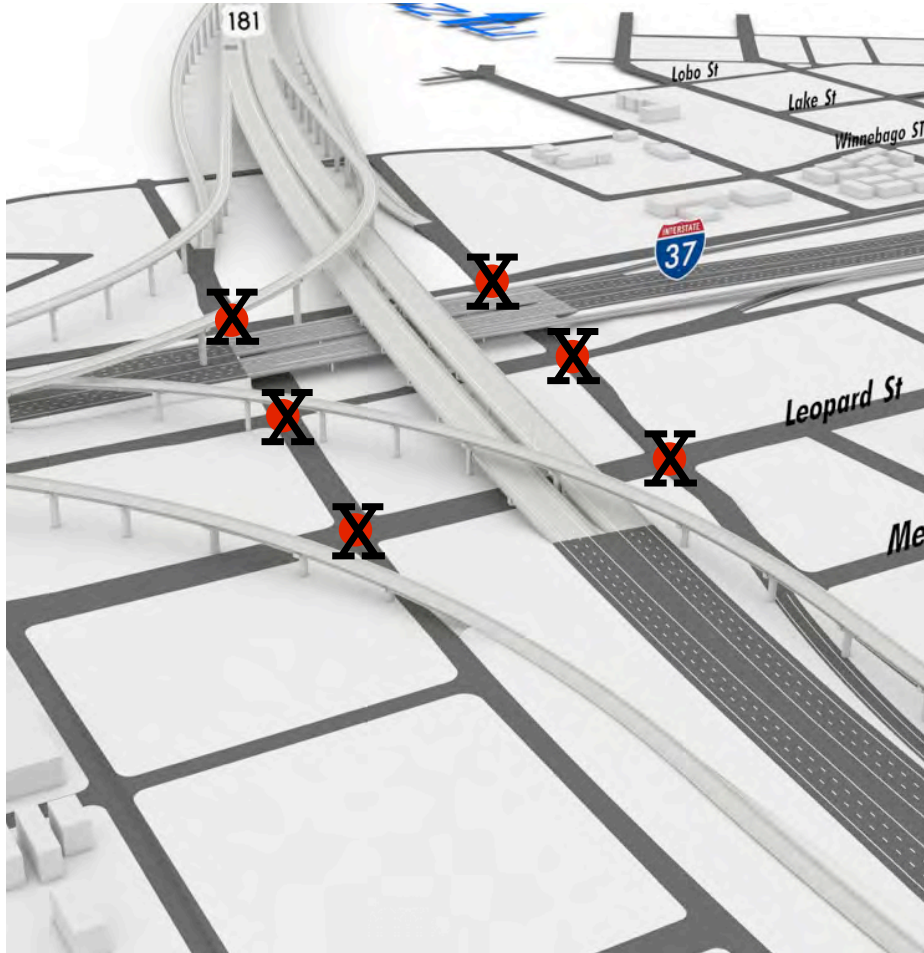
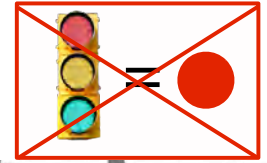
- Enhanced Port Access
- North Beach Area
- Enhanced SEA District Access
- Same Neighborhood Access

Bicycle/Pedestrian Connectivity

Visual Quality



Enhanced Mobility for All Traffic by Eliminating 6 Signals



Red Alternative Interchange



Enhanced Interchange
Creating Multiple Free Flowing Gateways

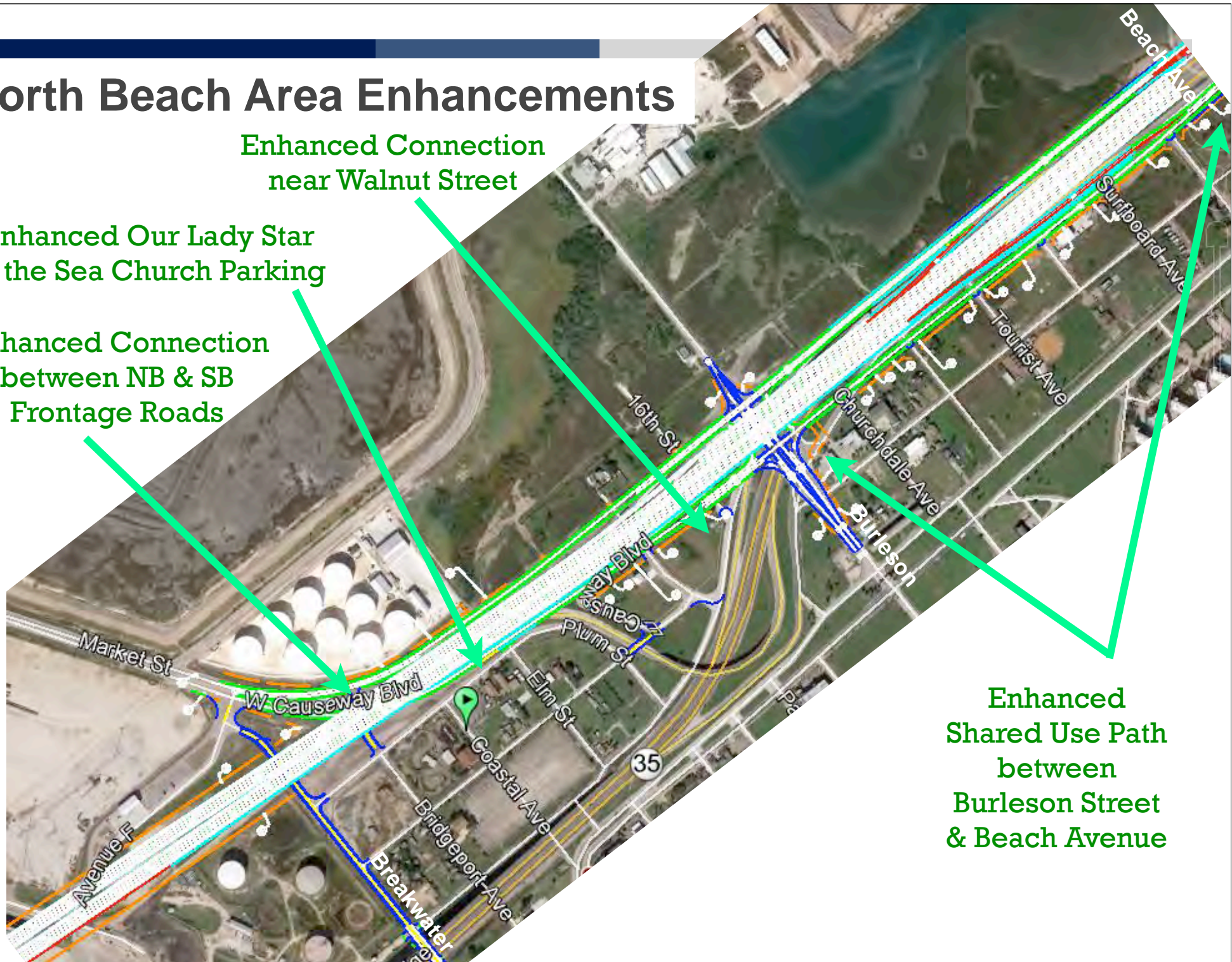
North Beach Area Enhancements

Enhanced Connection
near Walnut Street

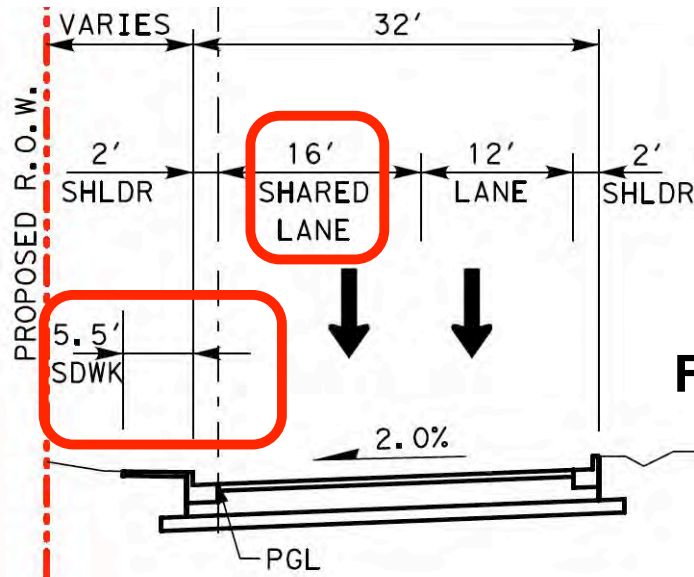
Enhanced Our Lady Star
of the Sea Church Parking

Enhanced Connection
between NB & SB
Frontage Roads

Enhanced
Shared Use Path
between
Burleson Street
& Beach Avenue



North Beach Area - Shared Use Path Enhancement



**Northbound
Frontage Road**

**Red
Alternative
Shared Lane
for Bicyclists**

**10' Shared Use Path for
2-Directional Bicycles
and Pedestrians**

**Enhancement
Shared Use Path
for Bicyclists
and Pedestrians**

Enhanced SEA District Access: To IH 37 & SH 286 (SB)



Enhanced SEA District Access: To IH 37 & US 181 (NB)



Neighborhood Access Remains Same as **Red Alternative**

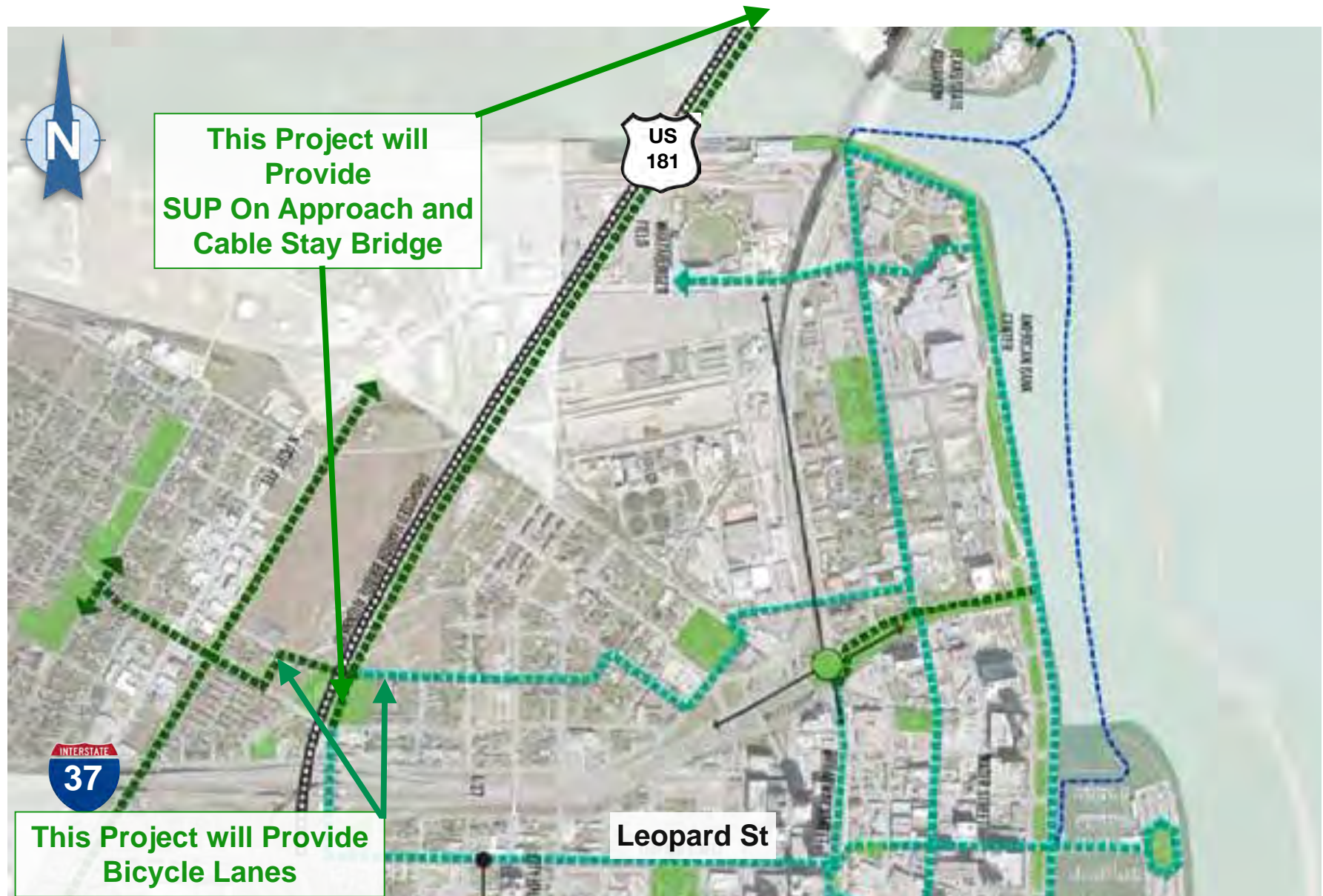


Pedestrian/Bicycle Connectivity



May 12, 2015 R/UDAT Downtown Area Development Plan

Same Connectivity as **Red Alternative Alignment**

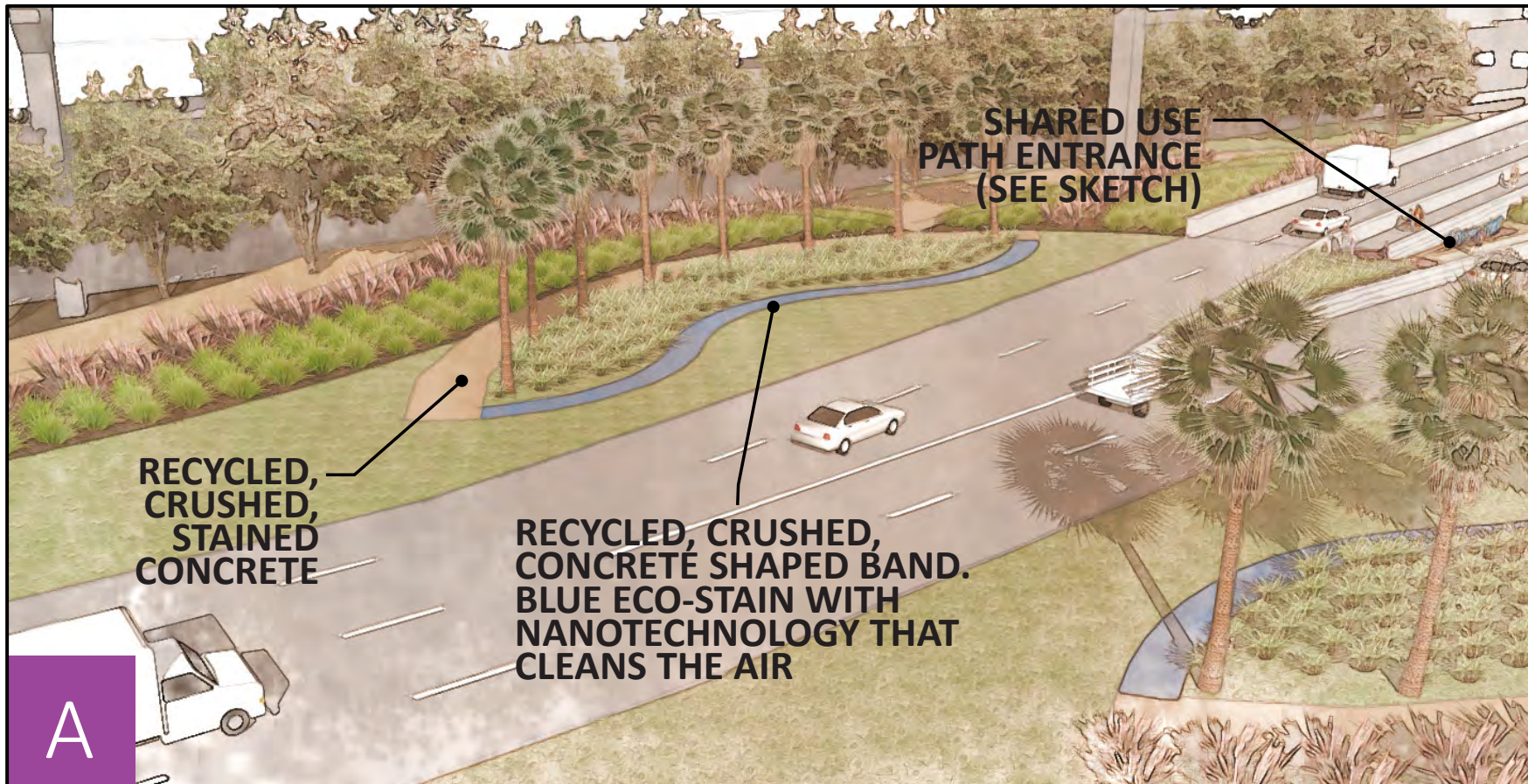


Visual Quality



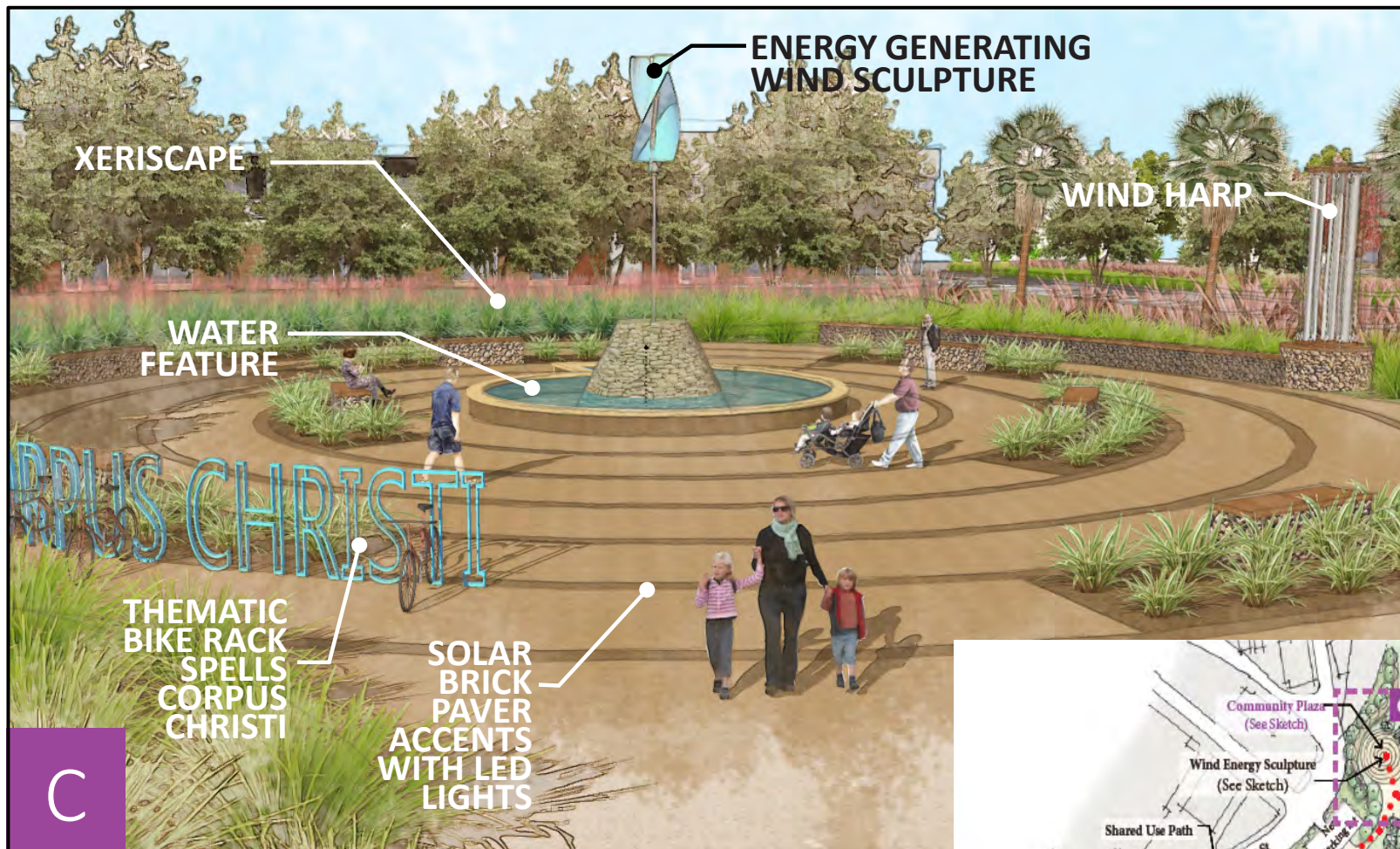
Corpus Christi: A Beacon of Coastal Beauty

Northbound Bridge Landscape Gateway

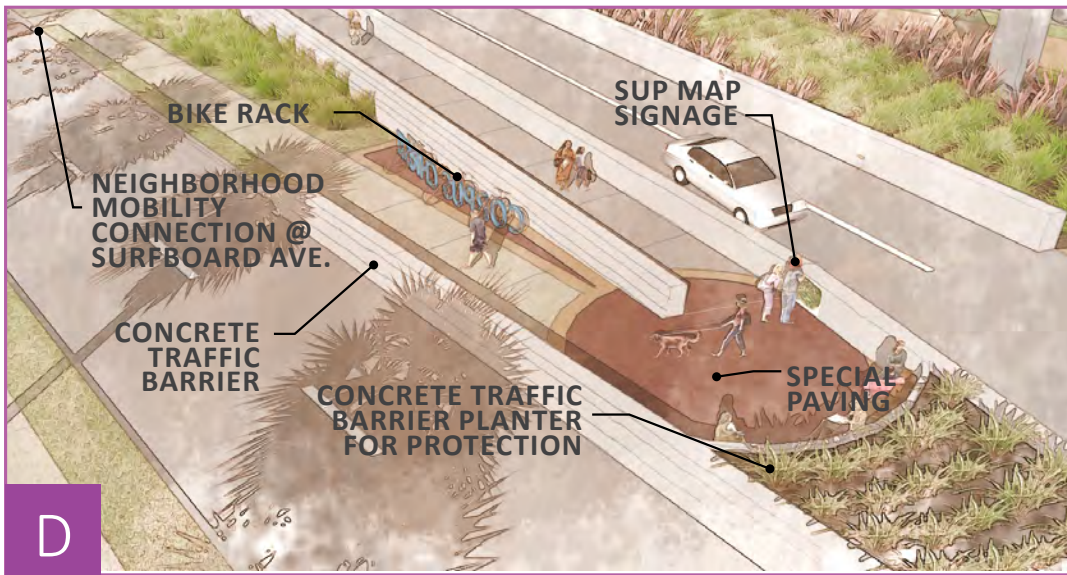




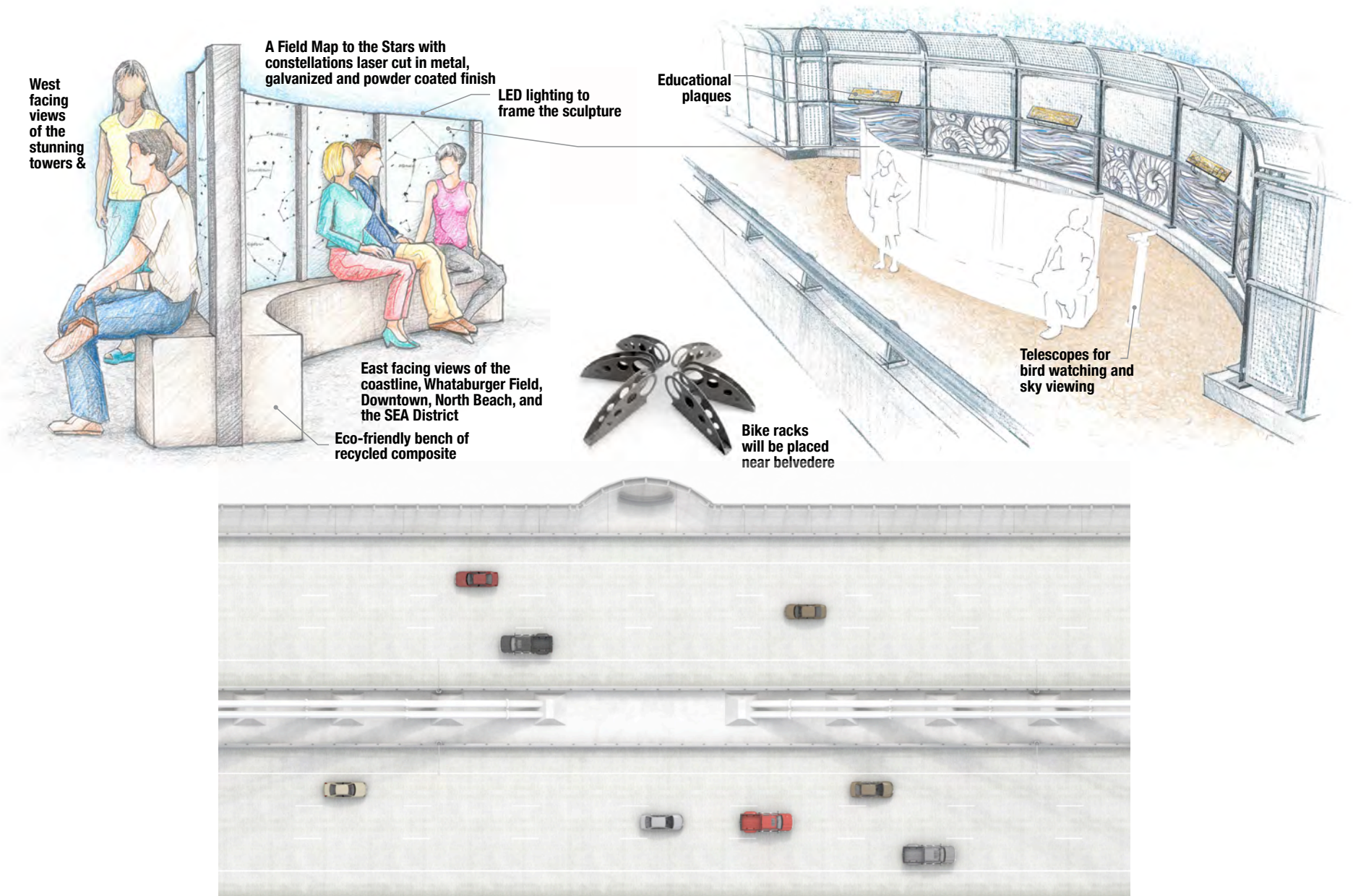
Community Plaza Concept



North Beach Area Shared Use Path Gateway Entrance



Shared Use Path Belvedere on Bridge



Design Charette with Community to Select Aesthetic Features

Full Day in Corpus Christi

Select a Day in Coming Months

(Either July, August, September or October)



Design Charette to Select Aesthetic Features

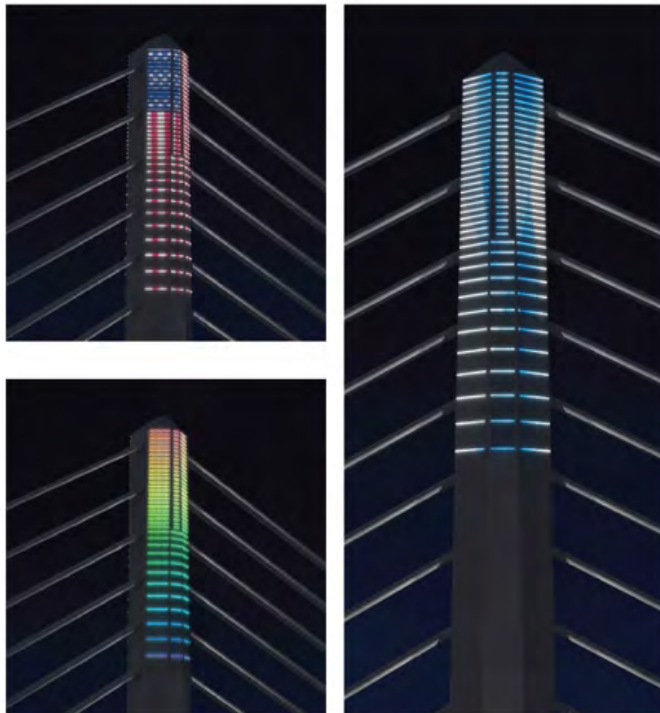
Bridge Aesthetic Lighting Color Patterns

Pedestrian Railing Style

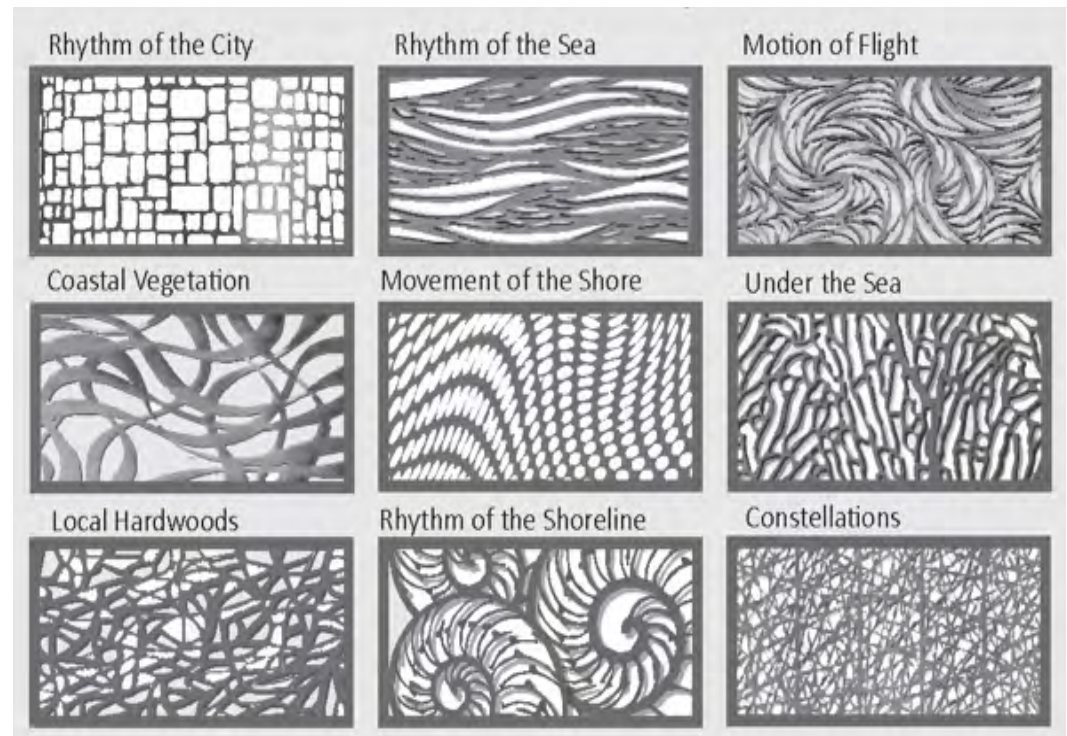
Roadway Sign Structure Column Details/Way Finding Sculptures

Concrete Texture/Pattern for Abutments and Noise Walls

Lighting Patterns



Railing Style



New Rendering View - Lake St and Josephine St



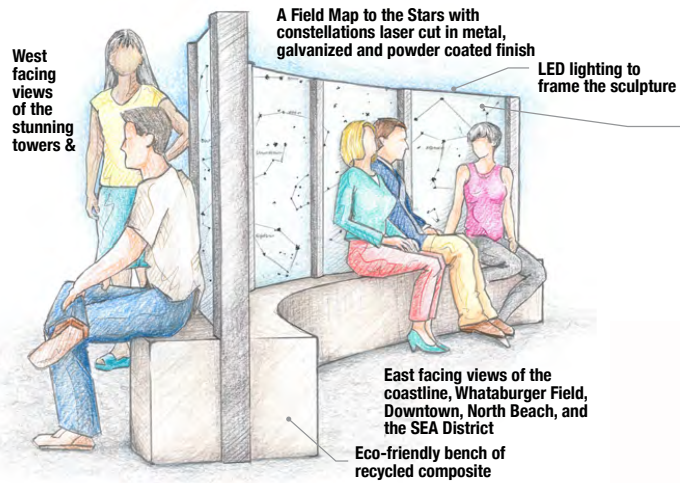
Existing



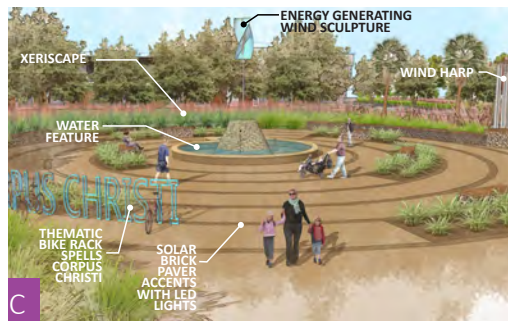
New
Imagine the
Natural
Beauty of
this
Connectivity

A photograph of a cable-stayed bridge at night. The bridge's piers and cables are illuminated with vibrant rainbow-colored lights, creating a striking contrast against the dark sky. The bridge deck is visible, and the surrounding area includes streetlights and some trees in the foreground.

Community Involvement
Design Charette
Sustainability Workshop
Public Input Meetings
Neighborhood Meetings
Construction Sidewalk Talks
Educational Program for Students
Various Community Events
Job Fair



Flatiron/Dragados LLC
500 North Shoreline Boulevard
Suite 500
Corpus Christi, Texas 78401



Corpus Christi: A Beacon of Coastal Beauty