

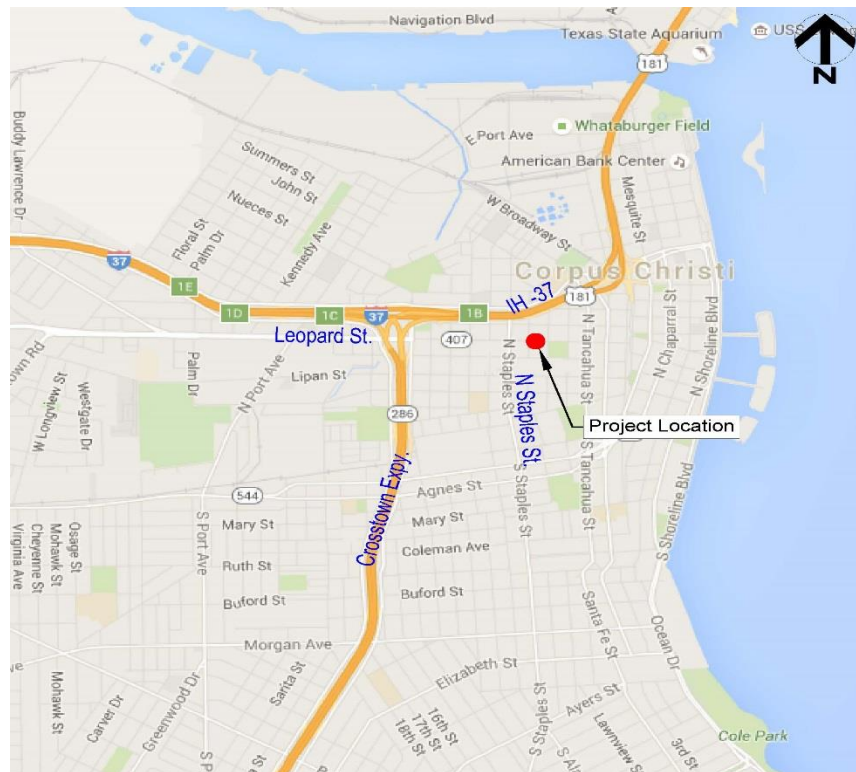
One-Way Streets and Parking Prohibition – Artesian Street and Mestina Street



**Council Presentation
May 10, 2016**

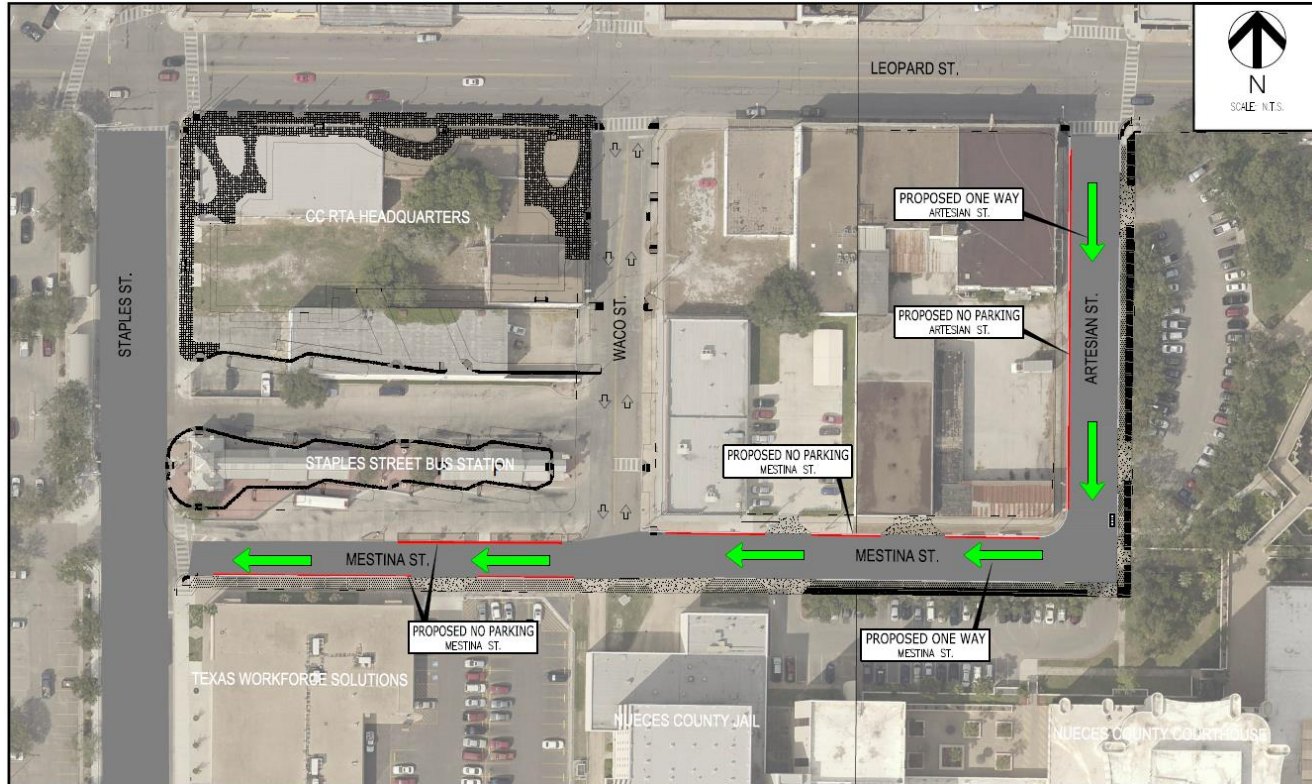
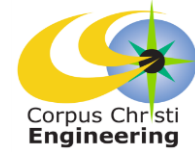


Project Vicinity



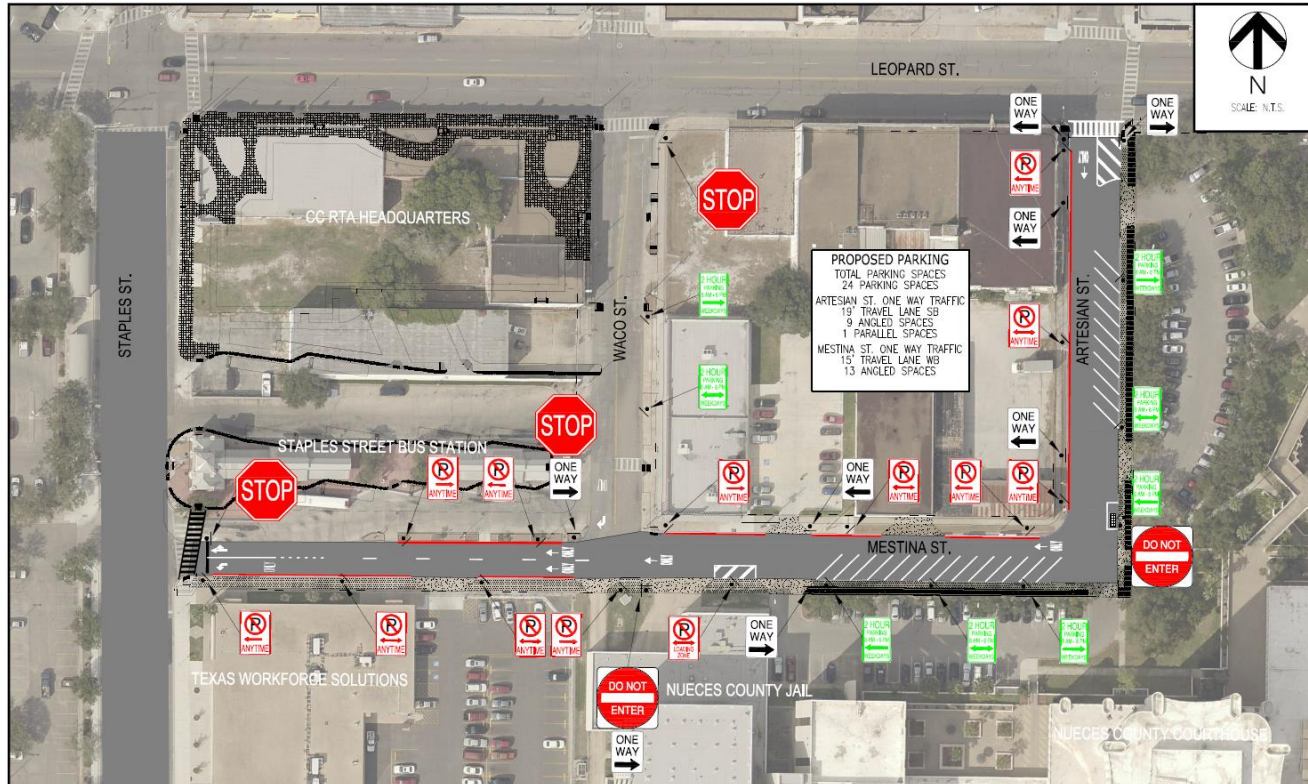
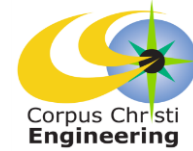


Location Map





Signs and Markings Plan

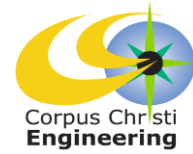




Scope



- Staples Street Station – Grand Opening May 2016
- Headquarters for RTA & Greyhound Bus Lines
- Proposed One-way Streets
 - Artesian between Leopard and Mestina
 - Mestina between Artesian and Waco
- Proposed Parking Prohibitions
 - Artesian from Leopard to Mestina (west side)
 - Mestina from Artesian to Waco (north side)
 - Mestina from Waco to Staples (both sides)
- More on street parking (angle parking)



Questions?
