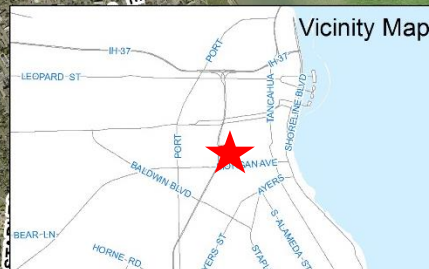
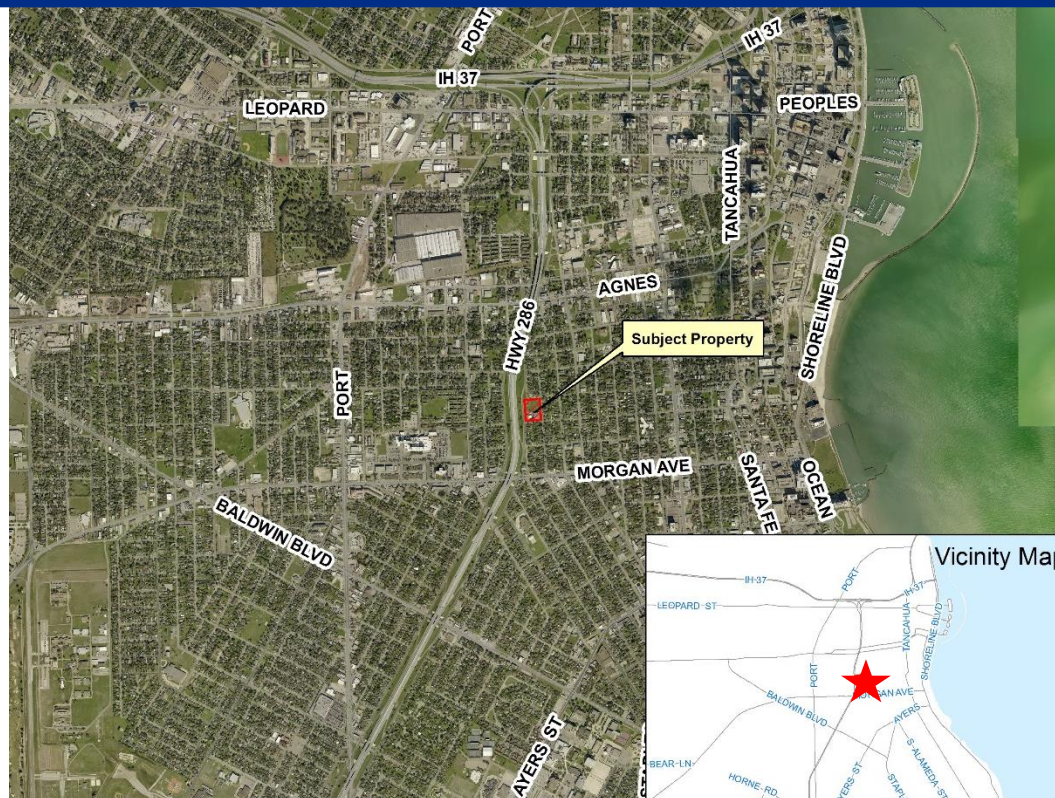


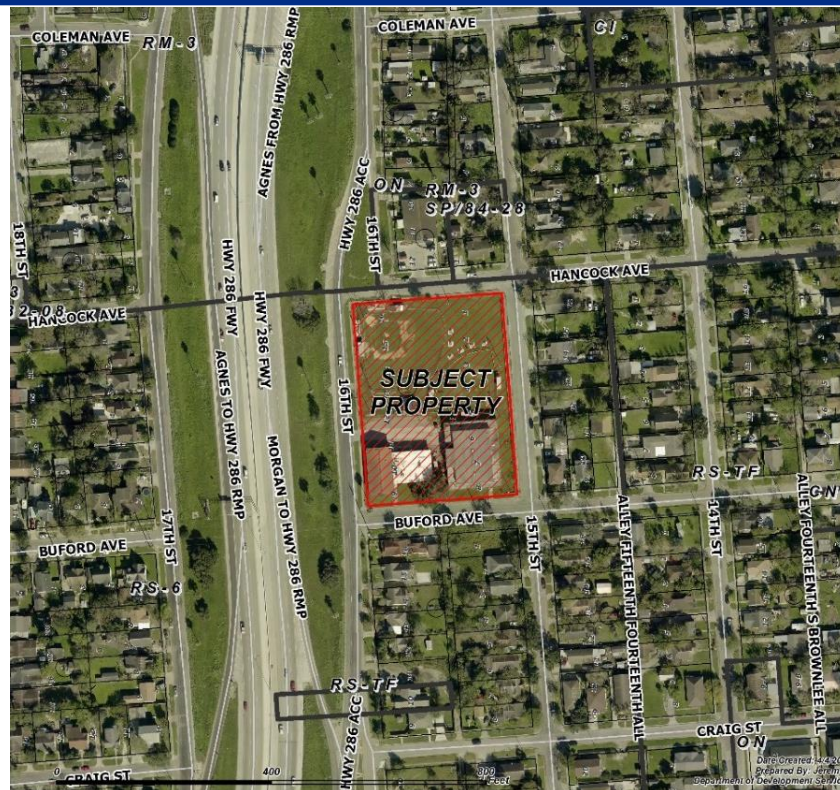


Aerial Overview



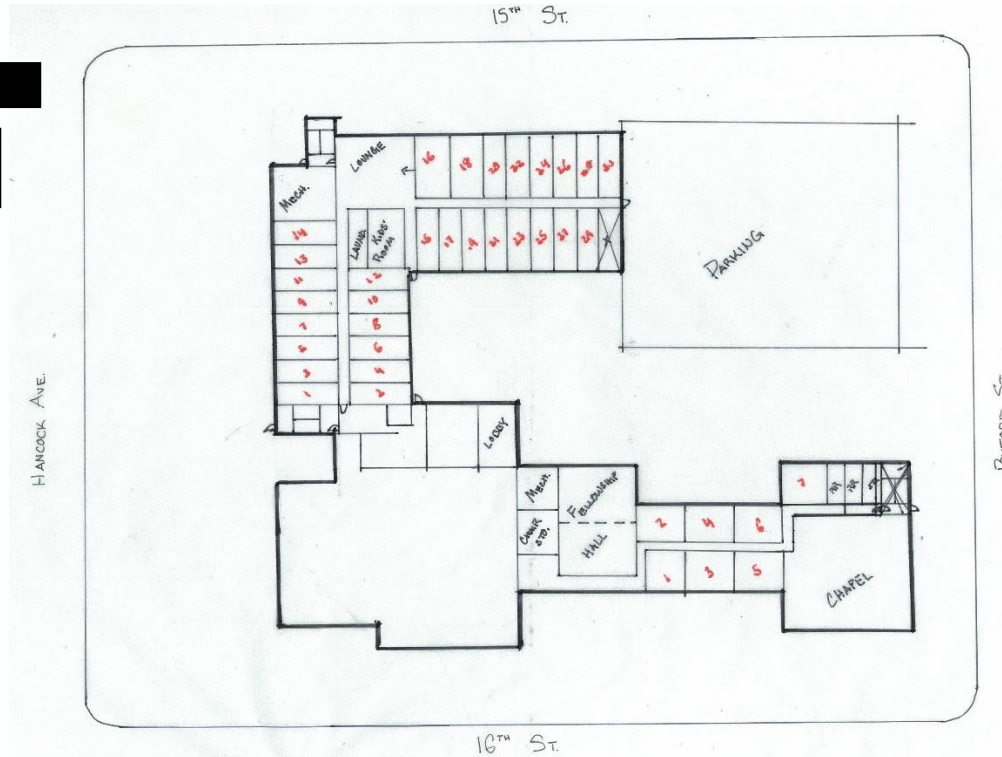


Aerial Overview





Site Plan





Conditions

1. **Uses:**
 - Transitional Housing Facility
 - Up to 220 beds
 - Meals for residents only.
 2. **Intake Facilities:** Adequate waiting area inside the facility.
 3. **Security:** Monitored by staff at all times.
 4. **Landscaping:** Per the UDC
 - 100% along 15th Street
 - 80% along Buford Avenue
 - 67% along Hancock Avenue
 - 60% along 16th Street.
-



Conditions

5. **Building Design:**

- Up to 50% of the façade can include metal elements.
- Windows and doors required to face the abutting residential development.

6. **Building Height:** 35 feet.

7. **Lighting:**

- Per UDC
- Freestanding light poles at a 15-foot maximum height.

8. **Parking:** No driveways on 15th Street.

9. **Time Limit:** 24 months
