



McGee Beach Nourishment

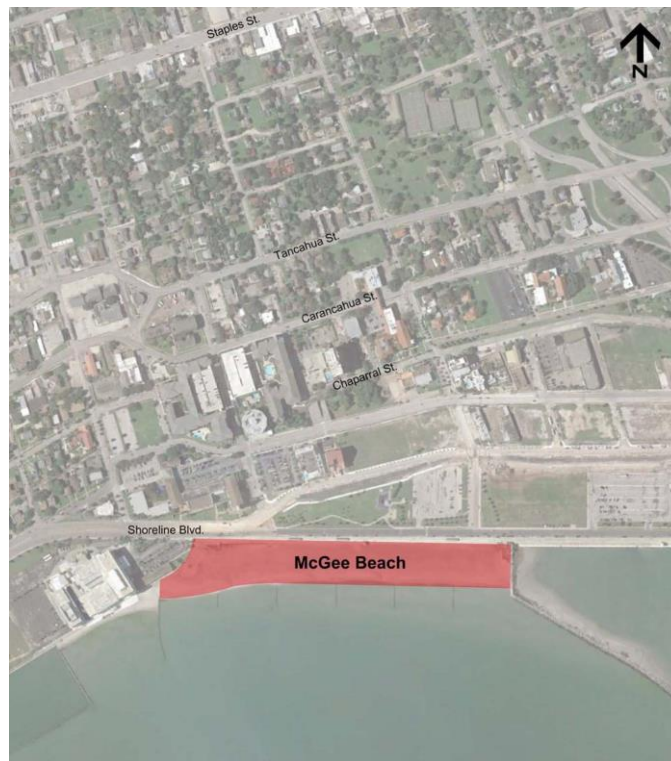
Feasibility Assessment for Dredging Marina at "R Pier"



Type A Board Presentation
May 16, 2016



Project Location





Project Scope



The project scope for study/consideration includes:

- Limited field data collection consisting of
 - bathymetric survey
 - Gradiometer survey
 - Bottom probing of southern portion of the R Pier
- Development of recommendations for sediment sampling, lab testing, and geotechnical analysis by third party
- Development recommendations for dredging locations, depth, and possible placement locations such as McGee Beach
- Development of conceptual-level opinion of probable construction cost
- Preparation of a technical memo containing the information above as well as recommendations of any required additional data collection