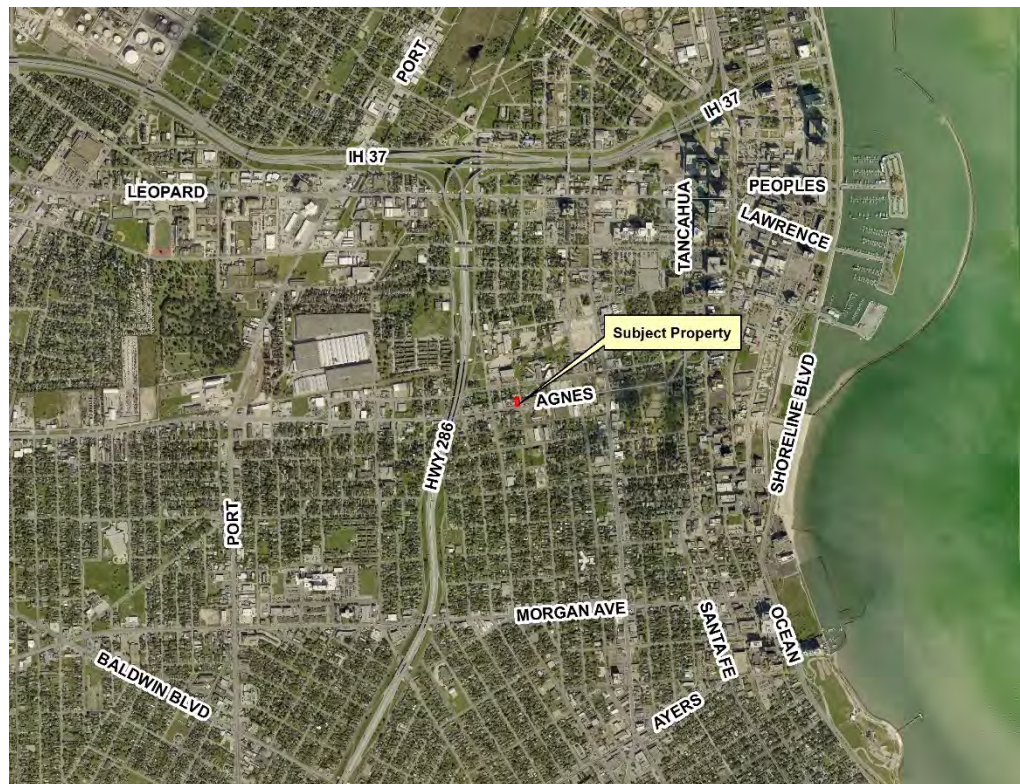


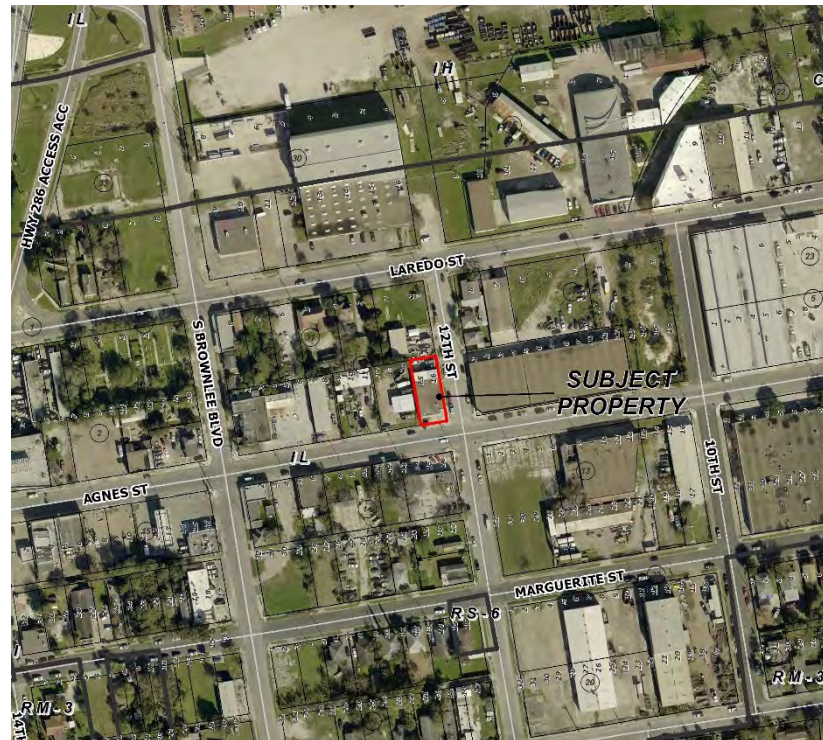


Aerial Overview



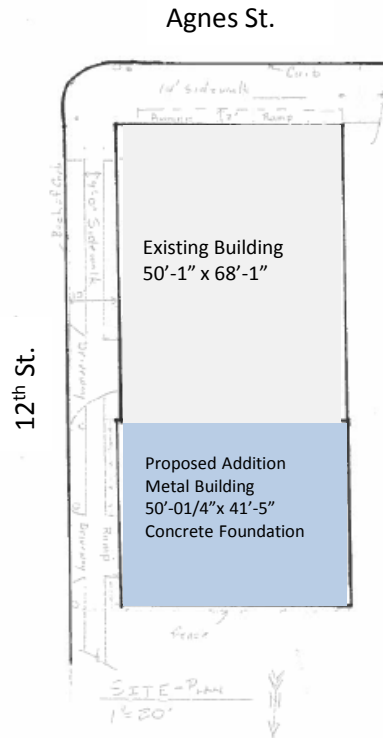


Aerial





Site Plan





Staff Recommendation

Denial of the “CI” Intensive Commercial
District
And, in lieu thereof,
Approval of the
“CI/SP” Intensive Commercial
District with a Special Permit
subject to the following conditions:



Special Permit Conditions

1. Uses.

- “CI” Intensive Commercial District Uses
- Repair of engines, transmissions, air-conditioning systems or radiators.

2. **Limitations.** All vehicle service operations on the Property shall occur within an enclosed structure.

3. **Time Limit.**

- 12 months to submit a building permit application
 - Special Permit shall expire if the allowed uses are discontinued for more than six consecutive months.
-