

# Regional Parkway Planning and Environmental Linkages (PEL)

**SEGMENT A**  
PARK RD. 22 - RODD FIELD RD.

**SEGMENT B**  
RODD FIELD RD. - SH 286

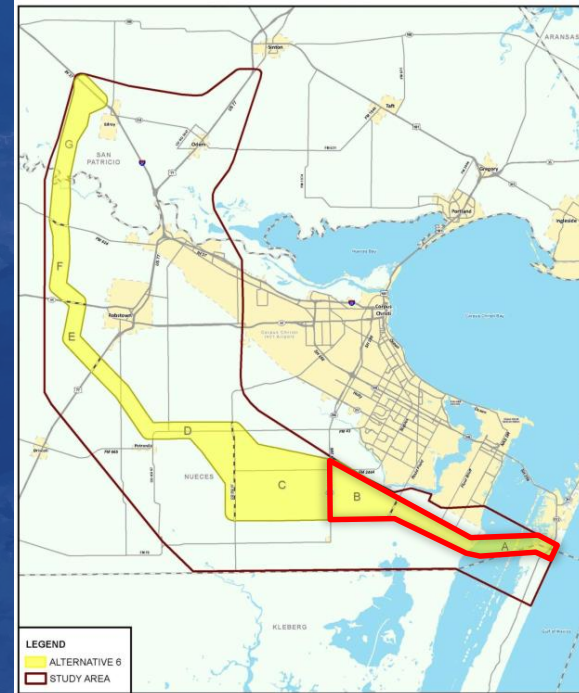


# Discussion Topics

1. Study Overview
2. Purpose and Need
3. Alternatives Analysis
4. Looking Ahead

# Study Overview

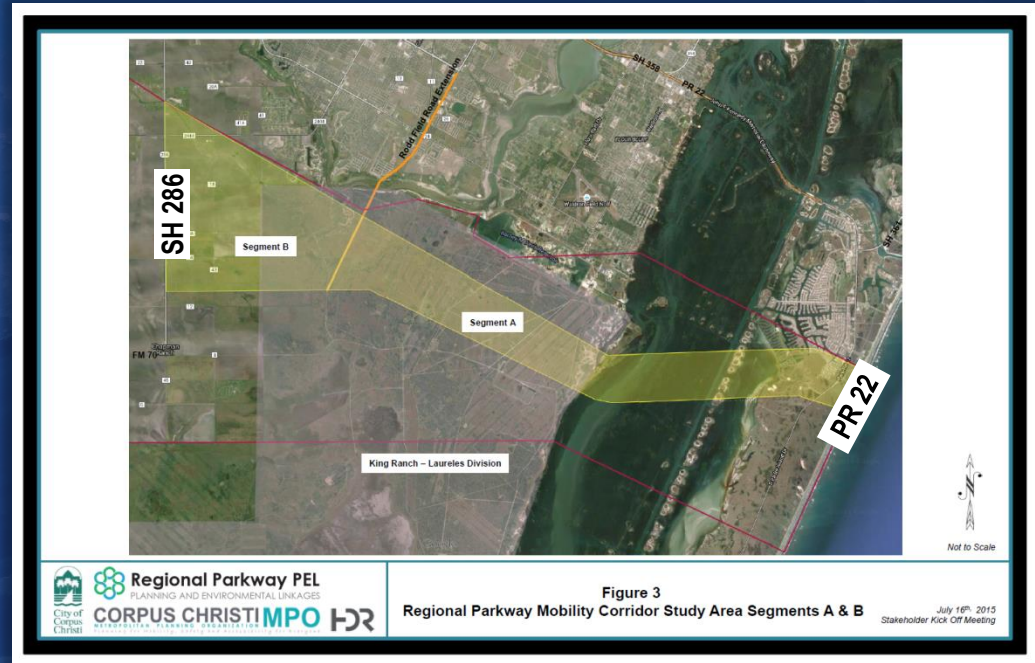
## Regional Parkway Mobility Corridor





# Current PEL Focus Segments A & B

## Study Overview



# The PEL Process



# Purpose and Need



Reduce congestion and facilitate regional mobility and connectivity



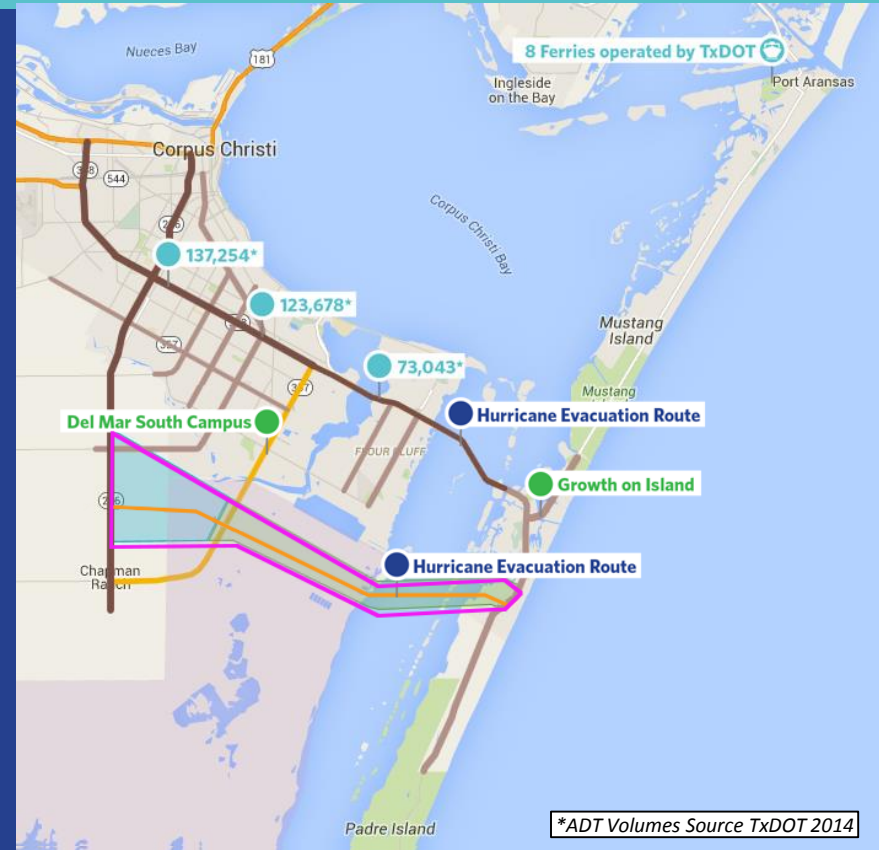
Address safety issues and provide an alternate hurricane evacuation route



Facilitate economic and population growth



Preserve right-of-way and adopt into the City Urban Transportation Plan

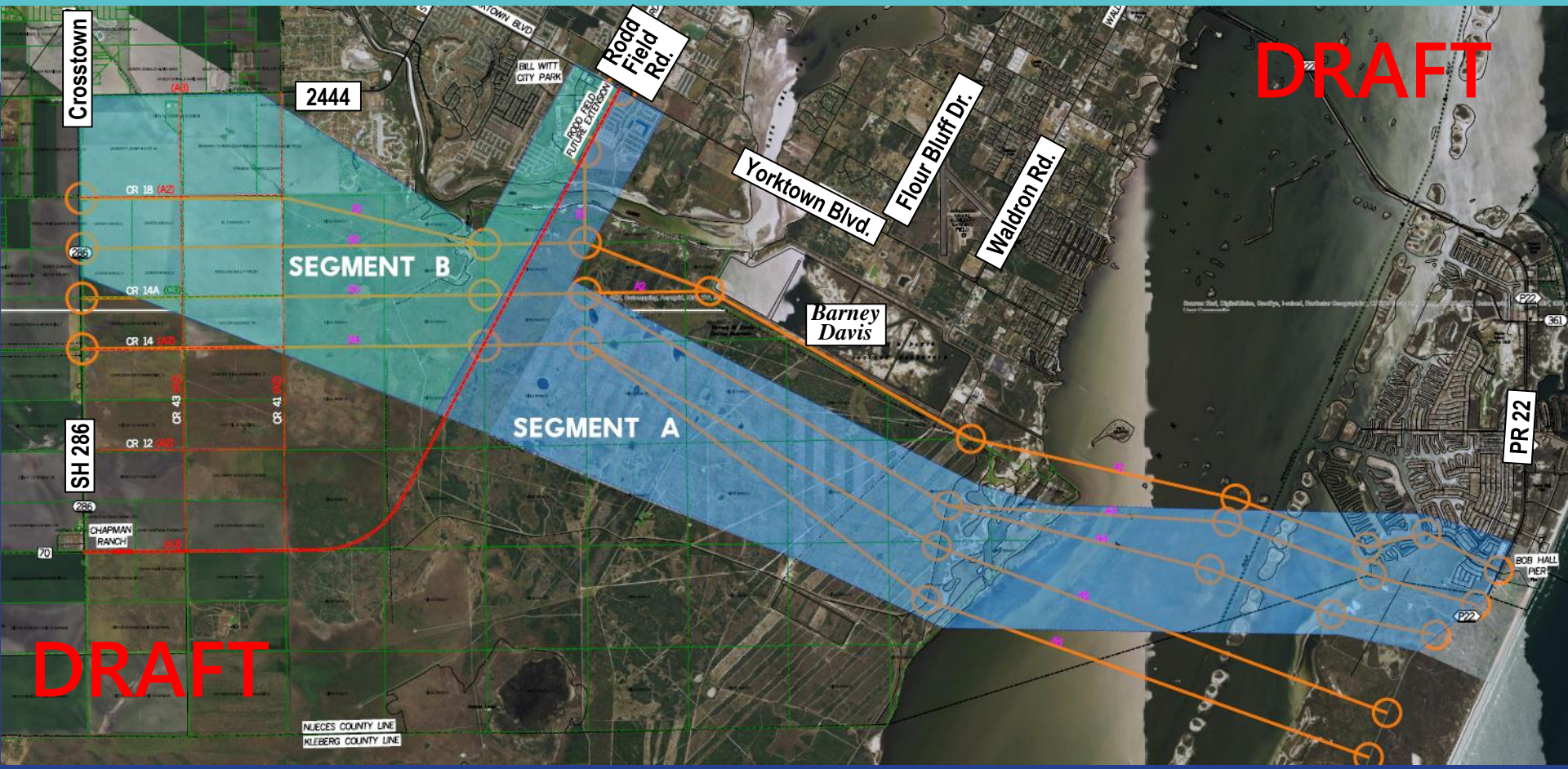


# What happens if nothing is done?





# Alternatives Analysis





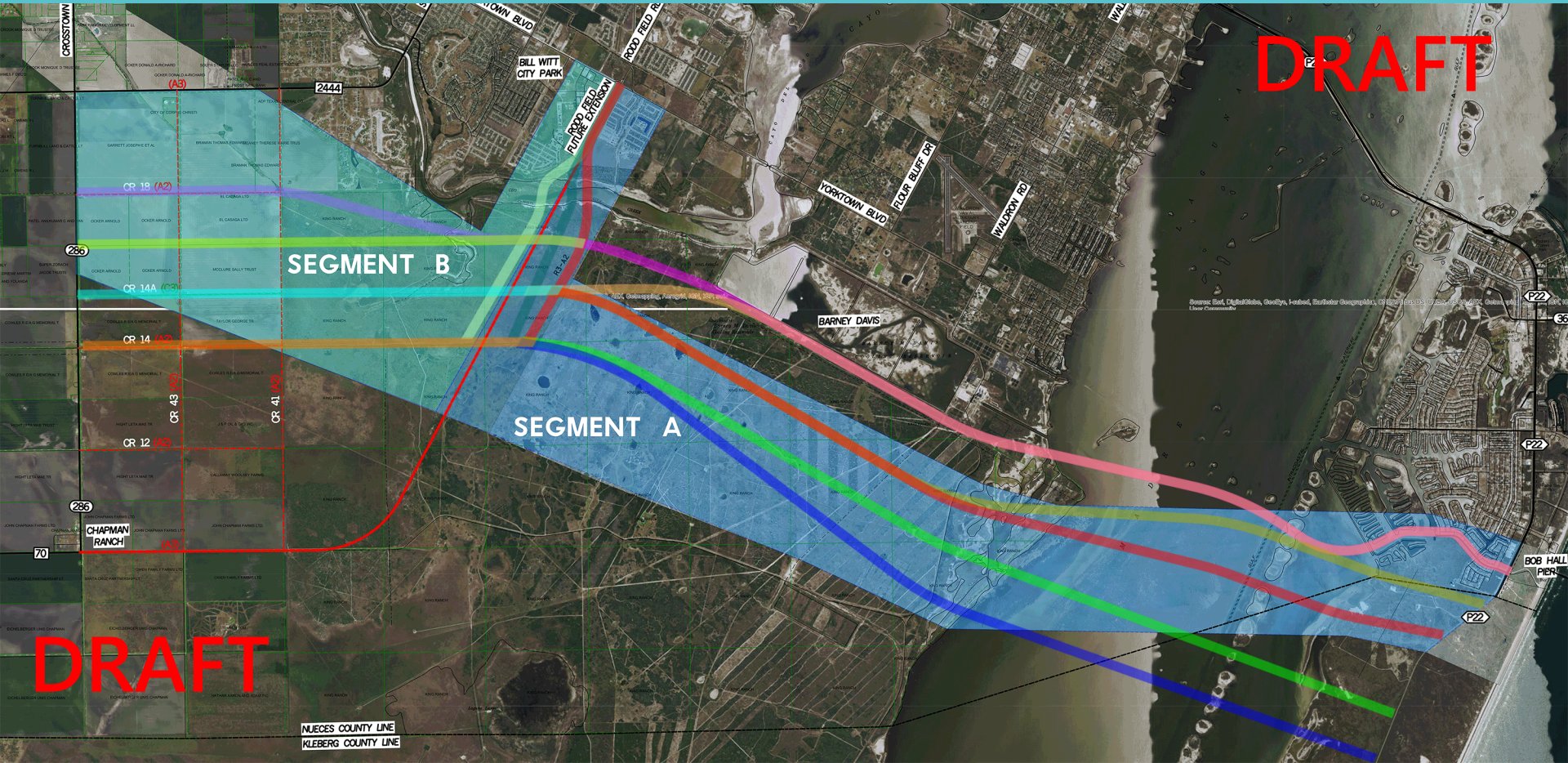
# Alternatives Analysis

## Initial Screening - Pass/Fail Evaluation



Continuous Public Outreach

# Alternatives Analysis



# Alternatives Analysis

## Secondary Screening – Development of Evaluation Criteria / Decision Matrix

Public Input

Environmental

Engineering

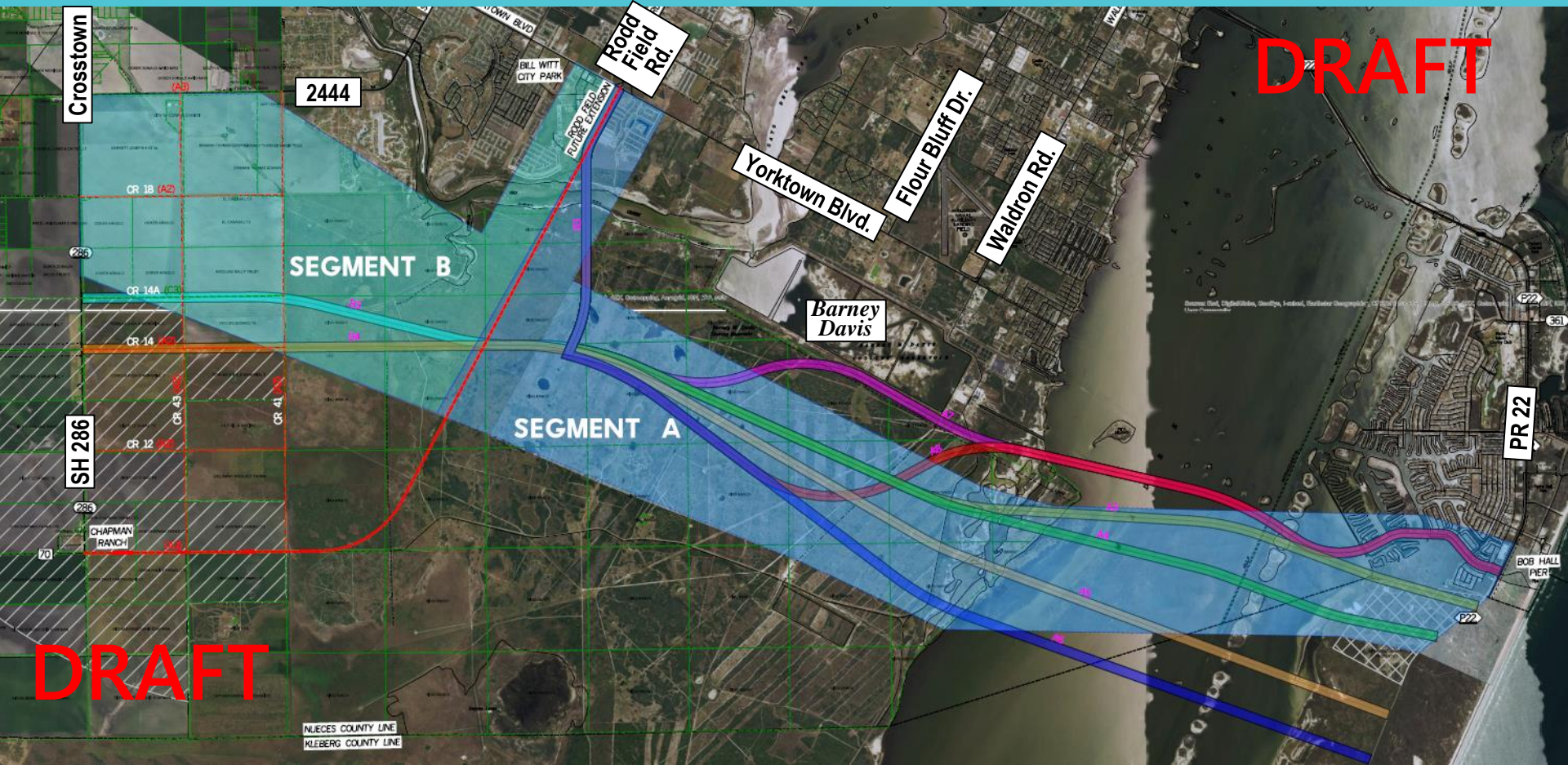
Mobility

Continuous Public Outreach





# Alternatives Analysis



# What it could look like



Your input is an important component  
in identifying a preferred alternative!



# Looking Ahead

Spring/Summer 2016



Continued  
Stakeholder  
Outreach

Spring/Summer 2016



Complete  
Alternatives  
Analysis

Summer/Fall 2016



Complete  
Final Report

Winter 2016



City amends  
Urban  
Transportation  
Plan



# Questions?



Jeff Pollack  
361-884-0687



Raymond Chong  
361-826-3552



Leah Olivarri  
361-884-5000



Bob Leahey  
512-912-5141

