



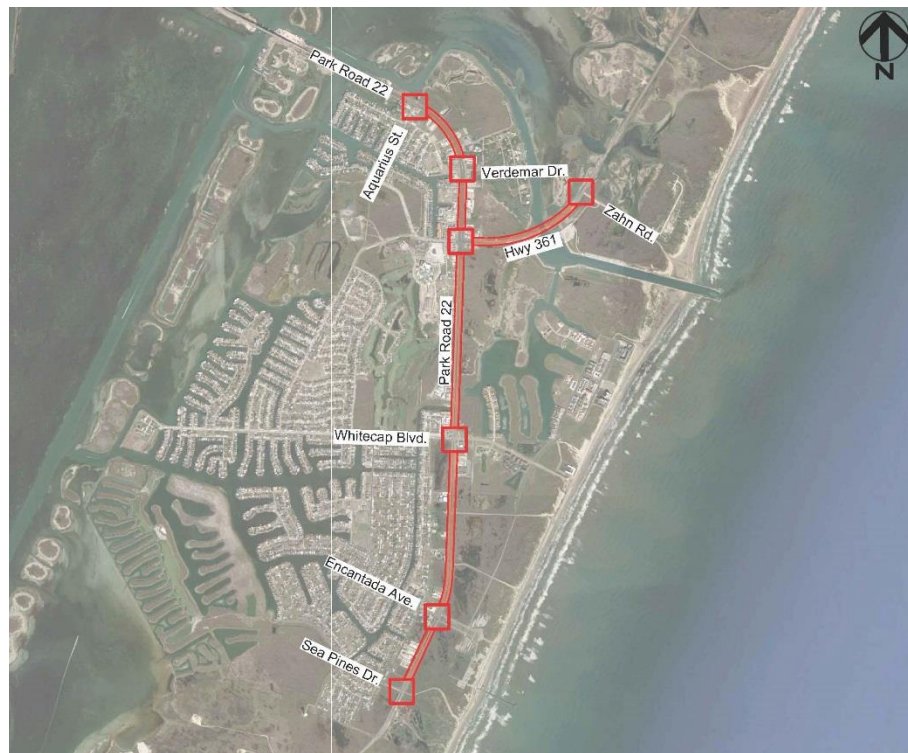
Padre Island Mobility and Access Management Study Street Bond 2014 Proposition 2



**Council Presentation
August 9, 2016**



Project Location





Project Scope



This is a joint City/MPO project that provides for an Access Management Study on Park Road 22 from Aquarius Street to Sea Pines Drive and on State Highway 361 from Park Road 22 to Zahn Road as follows:

- The study evaluates existing conditions and potential development impacting mobility, safety, and economic growth while reducing conflict points, congestion, accident rates, and air pollution.
- Recommendations for short-term and long-term strategies.
- Cost Sharing 20/80 with City/State respectively



Project Schedule



2016				2017	
Aug	Sep	Oct	Nov	Dec	Jan
Access Mgt Study		Short-Range		Long-Range Strategies	



Questions?
