



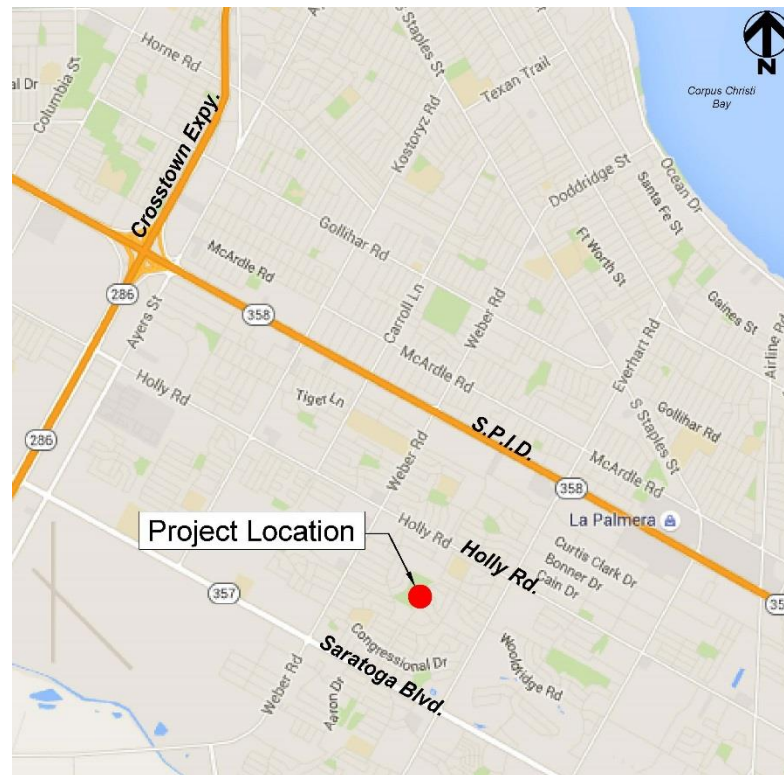
# Schanen Hike and Bike Trail



Council Presentation  
September 27, 2016

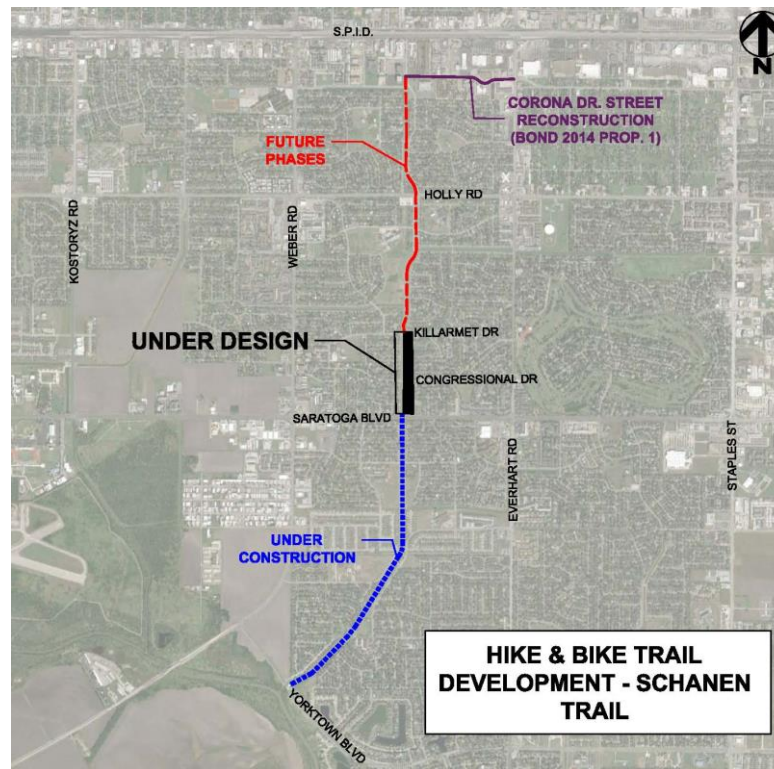


# Location Map





# Vicinity Map





# Project Scope



- Continuation of trail halfway toward Holly Rd.
- Change in material to concrete from decomposed granite
- Material change due to trail being in floodway due to space limitations
- Project limits at Killarmet Dr. allows for access to Schanen Park and Tom Browne Middle School



# Project Schedule



2016						2017						
Mar	Apr	May	June	July	Aug	Sep	Oct	Nov	Dec	Jan	Feb	Mar
Design				Bid			Construction					