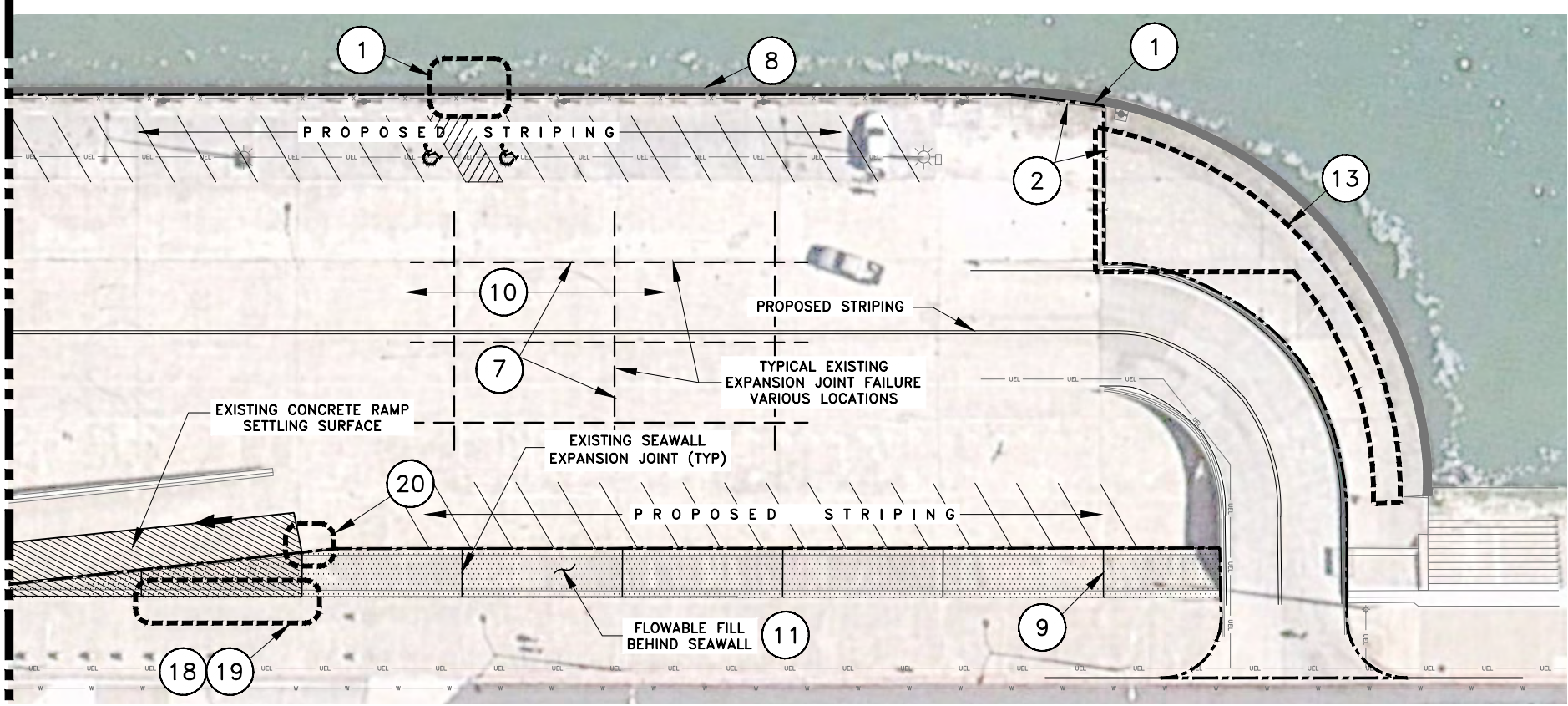
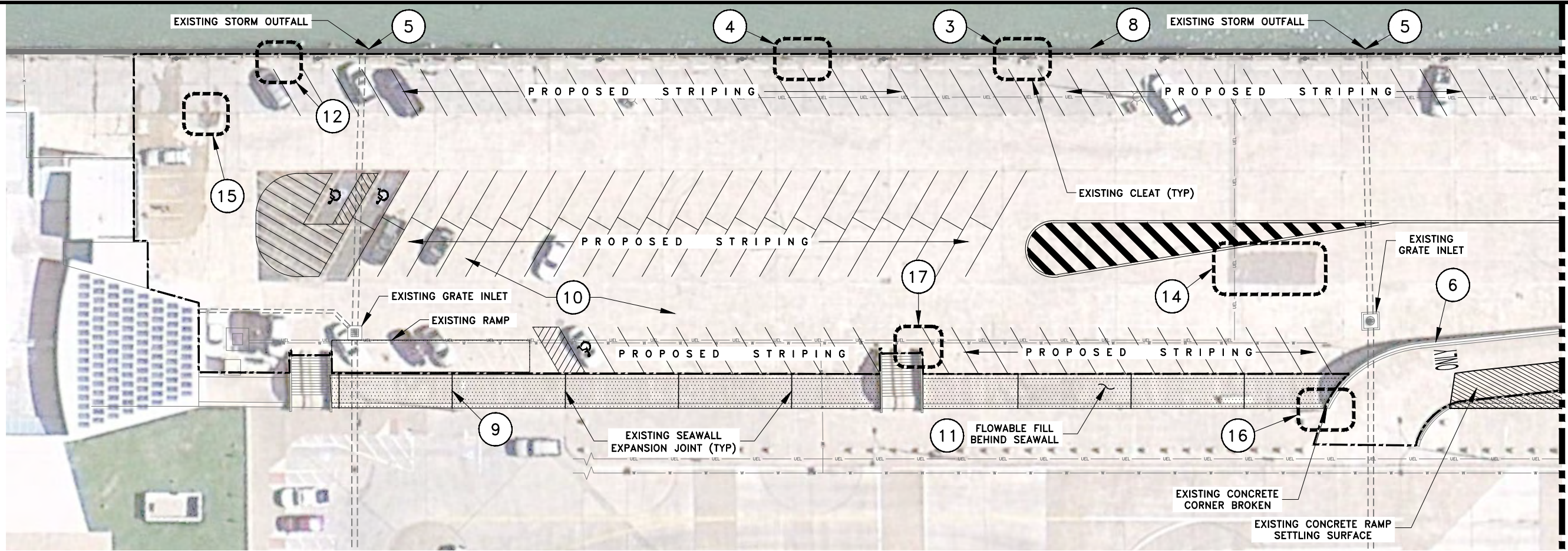


R:\E\NAME: R:\CLIENTS\CITY OF CC-7\12040 - Barge Dock Improvements - Project #3426\CAD\CONSTRUCTION DRAWINGS\1 - PLAN OF IMPROVEMENTS.dwg, rcavanagh Tue, Sep 27 2016 @ 11:06 am X-EXISTING.dwg, LJA-Tblock-11x17-EXHIBIT.dwg




BASE BID	
ITEM AND PHOTO	ITEM DESCRIPTION
TYPICAL REPAIRS	
1	CLEAN AND SEAL CONCRETE AROUND BOLLARDS
2	REMOVE AND REPLACE DAMAGED BOLLARDS
3	CLEAN AND SEAL CONCRETE AROUND CLEATS
4	REPAIR DAMAGE TO CONCRETE BULKHEAD CAP
5	FILL VOID AROUND STORM OUTFALL
6	CLEAN AND RESEAL EXPANSION JOINTS AT RAMP WALL
7	CLEAN AND RESEAL EXPANSION JOINTS AT PAVEMENT
8	CLEAN AND RESEAL EXPANSION JOINTS BETWEEN BULKHEAD AND PAVEMENT
9	CLEAN AND RESEAL EXPANSION JOINTS AT SEAWALL
10	CLEAN AND SEAL CONCRETE SURFACE CRACKING
11	FLOWABLE FILL BEHIND SEAWALL
12	CLEAN AND REPAIR CONCRETE SPALLING
-	STRIPING
SPECIFIC REPAIRS	
13-15	REMOVE AND REPLACE DAMAGED CONCRETE
16-17	CONCRETE POINT REPAIR
ALTERNATE NO. 1	
18-20	REMOVE AND REPLACE SETTLED/UPHEAVED CONCRETE SEAWALL AND PAVING
ALTERNATE NO. 2	
-	PAVEMENT SEALANT
ALTERNATE NO. 3	
-	PARKING LOT GLASGRID AND HMAC OVERLAY

THIS DOCUMENT IS RELEASED TEMPORARILY FOR INTERIM REVIEW PURPOSES ONLY BY D. SCOTT JONES P.E., 81986 ON 9/27/16, AND SHALL NOT BE USED FOR CONSTRUCTION, BIDDING, OR PERMIT PURPOSES.


BARGE DOCK IMPROVEMENTS

PROPOSED IMPROVEMENTS

CITY PROJECT NO. 3426



Corpus Christi
Engineering



LJA Engineering, Inc.
TBE FIRM REG. NO. F-1386

1 OF 4

RVE NAME: R:\CLIENTS\CITY OF CC-7\12040 - Barge Dock Improvements - Project #3426\CAD\CONSTRUCTION DRAWINGS\2 - FIELD CONDITION PHOTOS.dwg rcavanagh Tue, Sep 27, 2016 @ 11:11 am LJA-Block-11x17-EXHIBIT.dwg



1
CLEAN AND SEAL CONCRETE
AROUND BOLLARDS



2
REMOVE AND REPLACE
DAMAGED BOLLARDS



3
CLEAN AND RESEAL
CONCRETE AROUND CLEATS



4
REPAIR DAMAGE TO
CONCRETE BULKHEAD CAP



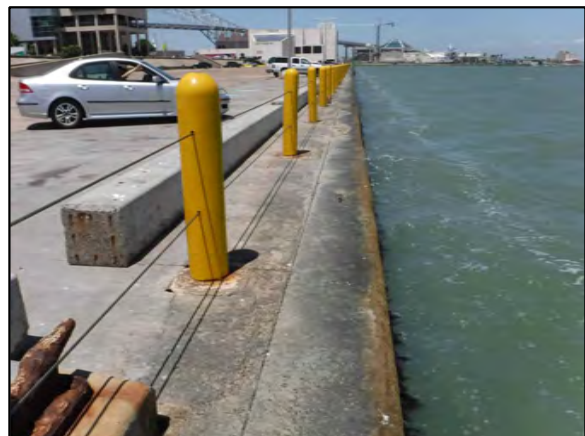
5
FILL VOID AROUND
STORM OUTFALL



6
CLEAN AND RESEAL EXPANSION
JOINTS AT RAMP WALL



7
CLEAN AND RESEAL EXPANSION
JOINTS AT PAVEMENT



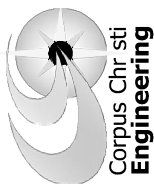
8
CLEAN AND RESEAL EXPANSION JOINTS
BETWEEN BULKHEAD AND PAVEMENT

THIS DOCUMENT IS
RELEASED TEMPORARILY
FOR INTERIM REVIEW
PURPOSES ONLY BY
D. SCOTT JONES P.E.,
81986 ON 9/27/16, AND
SHALL NOT BE USED FOR
CONSTRUCTION, BIDDING,
OR PERMIT PURPOSES.

BARGE DOCK IMPROVEMENTS

PHOTOS OF EXISTING CONDITIONS

CITY PROJECT NO. 3426



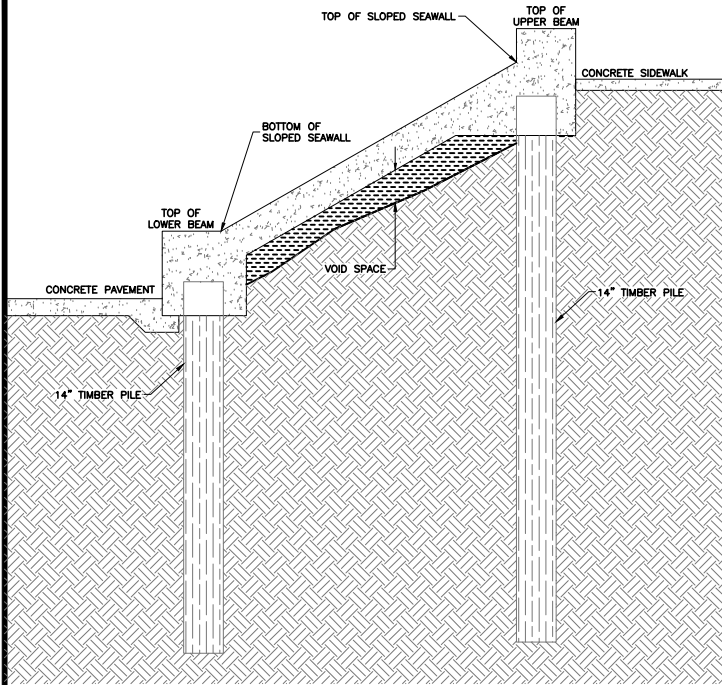
RVE NAME: R:\CLIENTS\CITY OF CO-7\12040 - Barge Dock Improvements - Project #3426\CAD\CONSTRUCTION DRAWINGS\3 - FIELD CONDITION PHOTOS.dwg - rcavanough Tue, Sep 27, 2016 @ 11:12 am LJA-Block-11x17-EXHIBIT.dwg



9 CLEAN AND RESEAL EXPANSION JOINTS AT SEAWALL



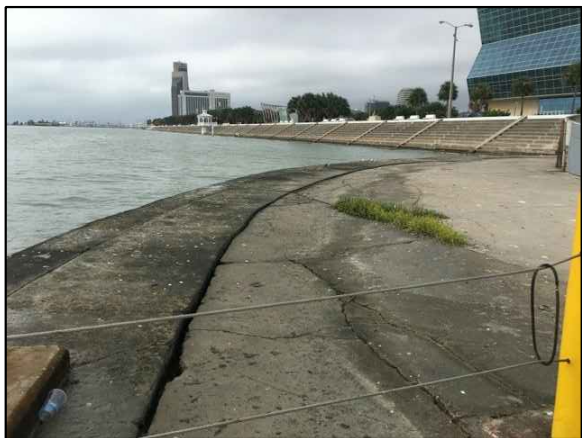
10 CLEAN AND SEAL CONCRETE SURFACE CRACKING



11 FLOWABLE FILL BEHIND SEAWALL
SCALE: N.T.S.



12 CLEAN AND REPAIR CONCRETE SPALLING



13 REMOVE AND REPLACE DAMAGED CONCRETE



14 REMOVE AND REPLACE DAMAGED CONCRETE



15 REMOVE AND REPLACE DAMAGED CONCRETE



16 CONCRETE POINT REPAIR

THIS DOCUMENT IS RELEASED TEMPORARILY FOR INTERIM REVIEW PURPOSES ONLY BY D. SCOTT JONES P.E., 81986 ON 9/27/16, AND SHALL NOT BE USED FOR CONSTRUCTION, BIDDING, OR PERMIT PURPOSES.

BARGE DOCK IMPROVEMENTS

PHOTOS OF EXISTING CONDITIONS

CITY PROJECT NO. 3426



RVE: NAME: R:\CLIENTS\CITY OF CC-7\12040 - Barge Dock Improvements - Project #3426\CAD\CONSTRUCTION DRAWINGS\4 - FIELD_CONDITION PHOTOS.dwg rcavanough Tue, Sep 27, 2016 @ 11:12 am LJA-Tblock-11x17-EXHIBIT.dwg



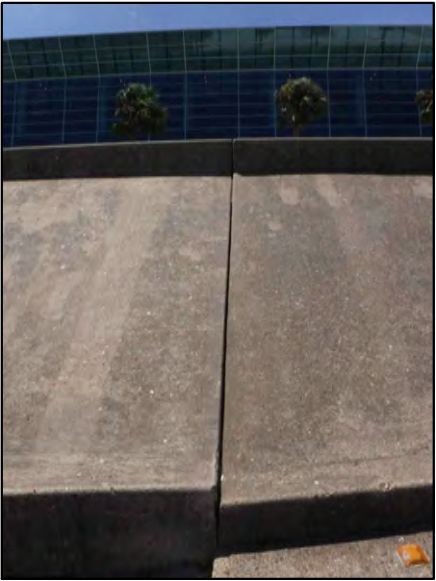
17

CONCRETE POINT REPAIR



18

ALTERNATE NO. 1
REMOVE AND REPLACE
SETTLED/UPHEAVED CONCRETE



19

ALTERNATE NO. 1
REMOVE AND REPLACE
SETTLED/UPHEAVED CONCRETE



20

ALTERNATE NO. 1
REMOVE AND REPLACE
SETTLED/UPHEAVED CONCRETE