



Zoning Case #0317-06 Prosperity Bank

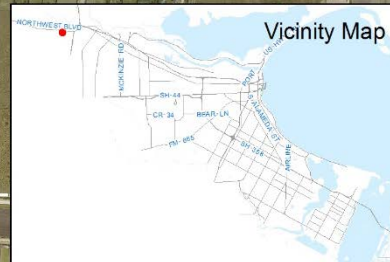
From: "RS-6" Single-Family 6 District

To: "CG-2" General Commercial District

Planning Commission Presentation
April 5, 2017



Aerial Overview



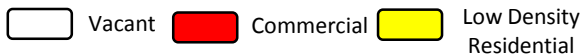
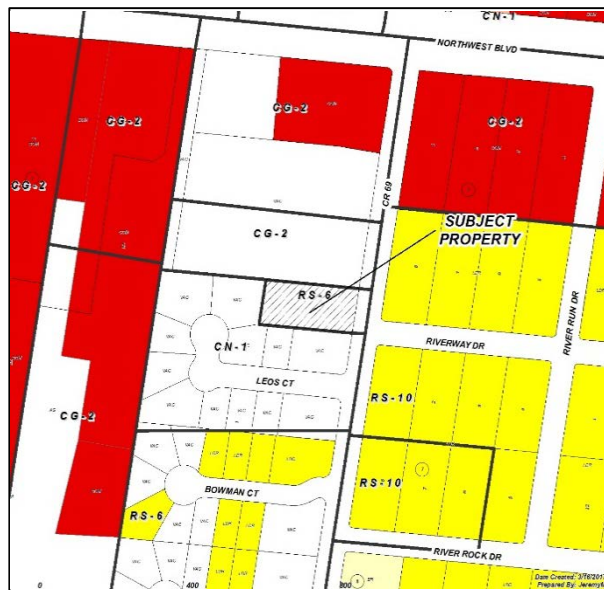


Aerial Map

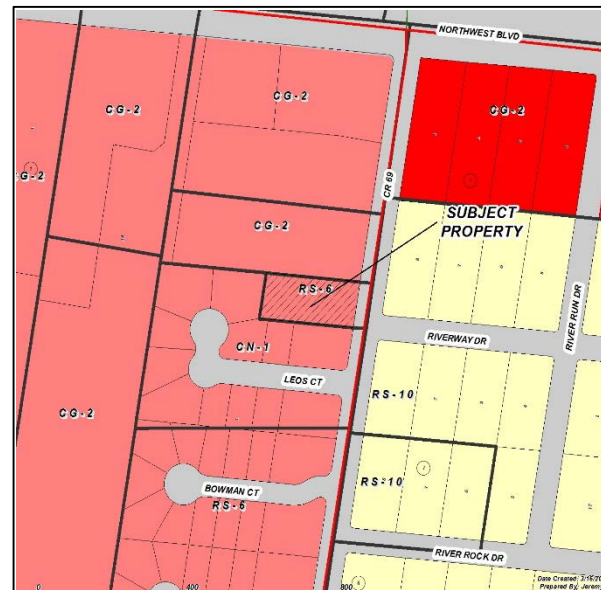




Existing Land Use

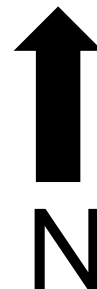


Future Land Use





Future Land Use Map



- Mixed Use
- Medium Density Residential
- Commercial



Subject Property Viewing West 3825 County Road 69





Facing North from Subject Property





Facing West from Subject Property





Facing South from Subject Property





Public Notification

16 Notices mailed inside 200' buffer

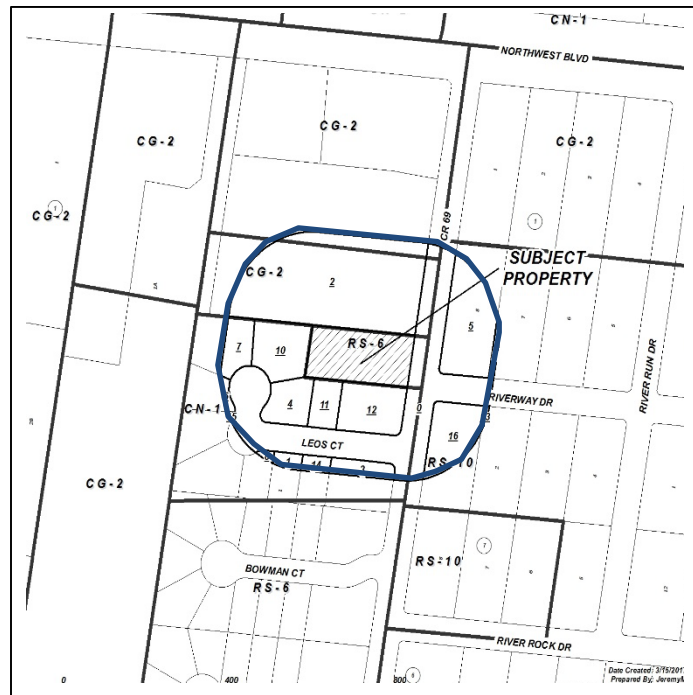
7 Notices mailed outside 200' buffer

Notification Area

Opposed: 0



In Favor: 0





Staff Recommendation

Approval of the
“CG-2” General Commercial
District