

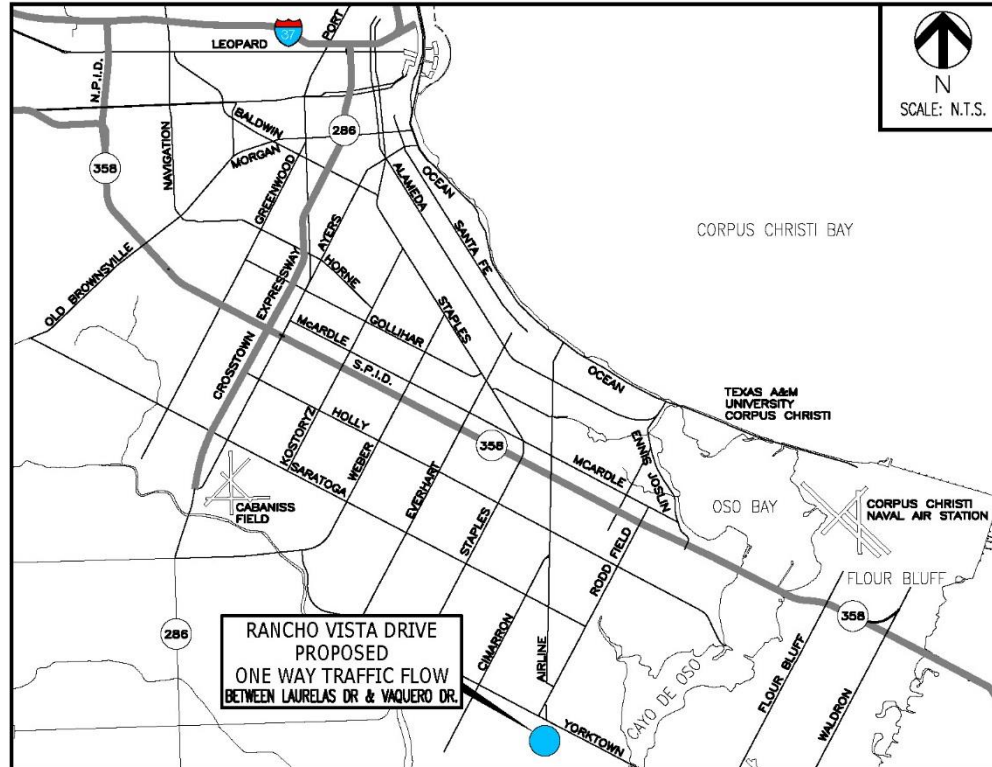
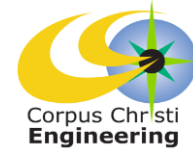
Designating One-Way Traffic Flow- Rancho Vista Blvd (East & West)



Council Presentation
May 23, 2017



Project Vicinity



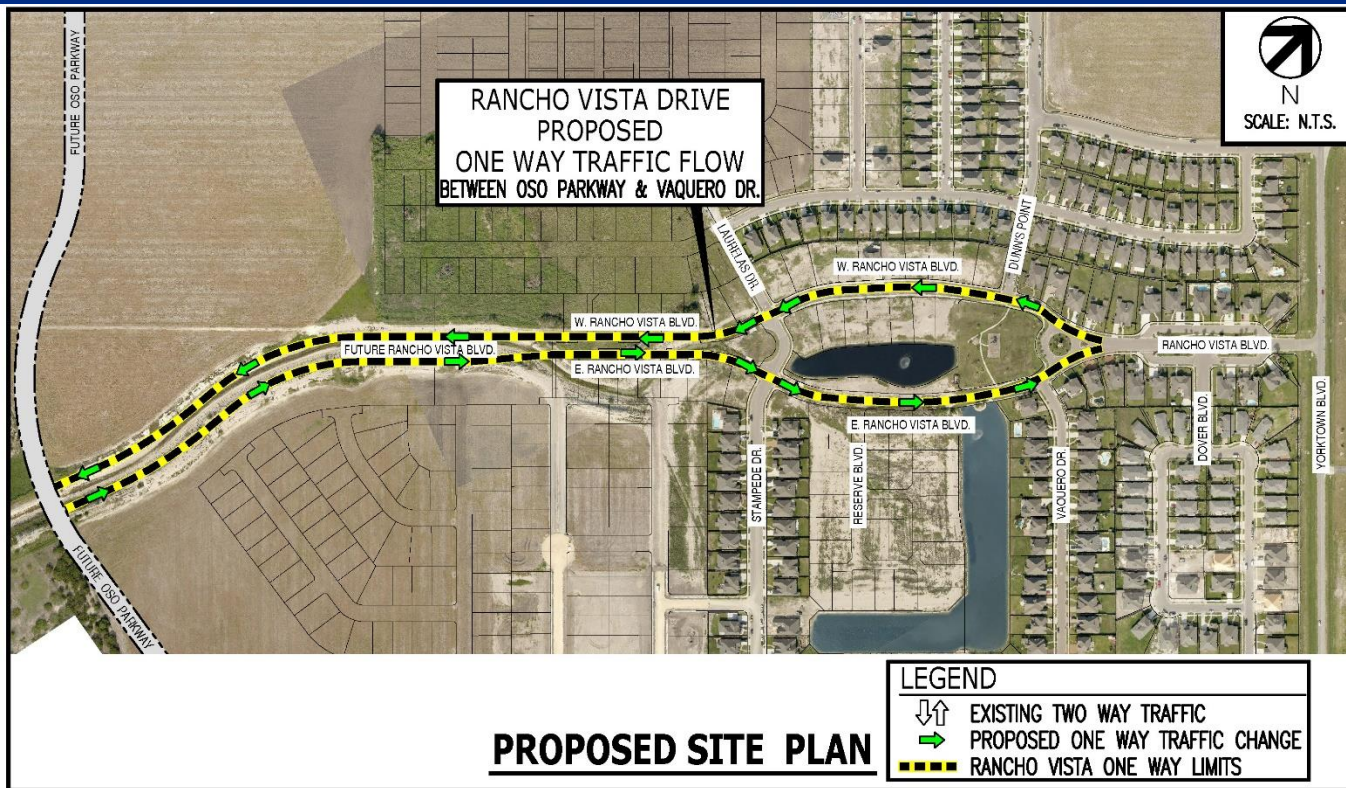


Existing Traffic Circulation





Proposed Traffic Circulation

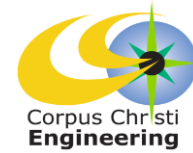




Recommendations



- Designate Existing & Future Sections of Rancho Blvd West & Rancho Blvd East as One-Way Traffic Flow
 - Rancho Vista Blvd (West) - 300' East of Dunn's Point and Oso Parkway
 - Rancho Vista Blvd (East) – 200' East of Vaquero Drive to Oso Parkway



Questions?
