

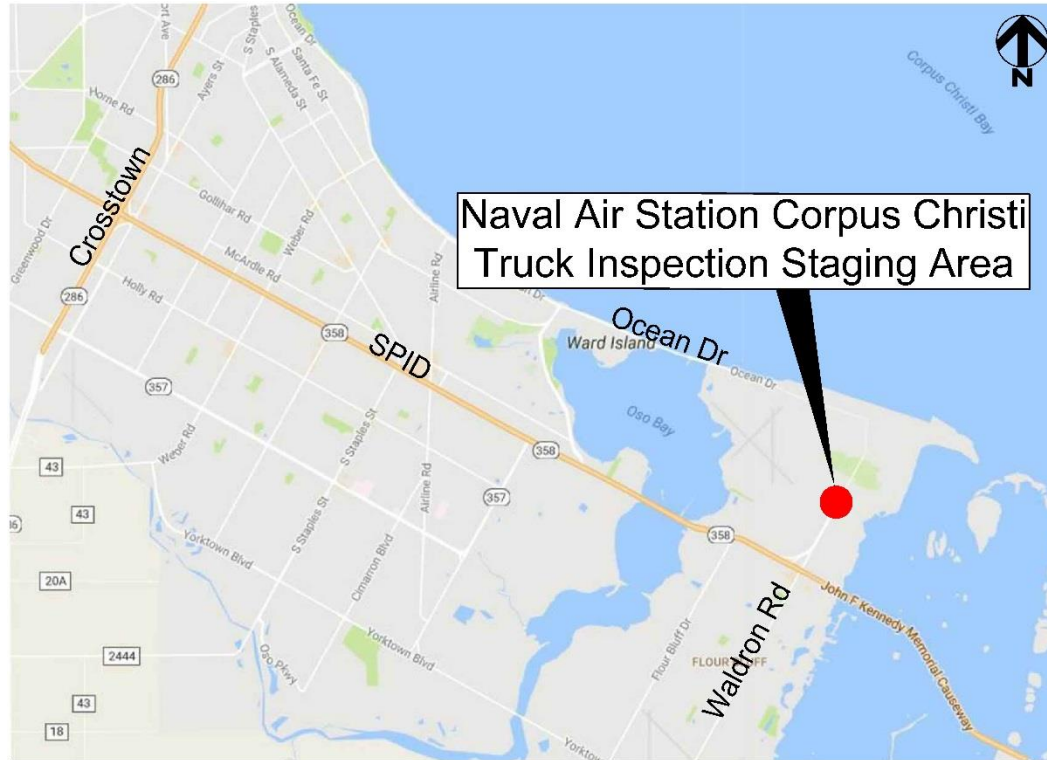
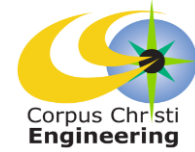
NASCC Truck Inspection Staging Area



Council Presentation
May 23, 2017

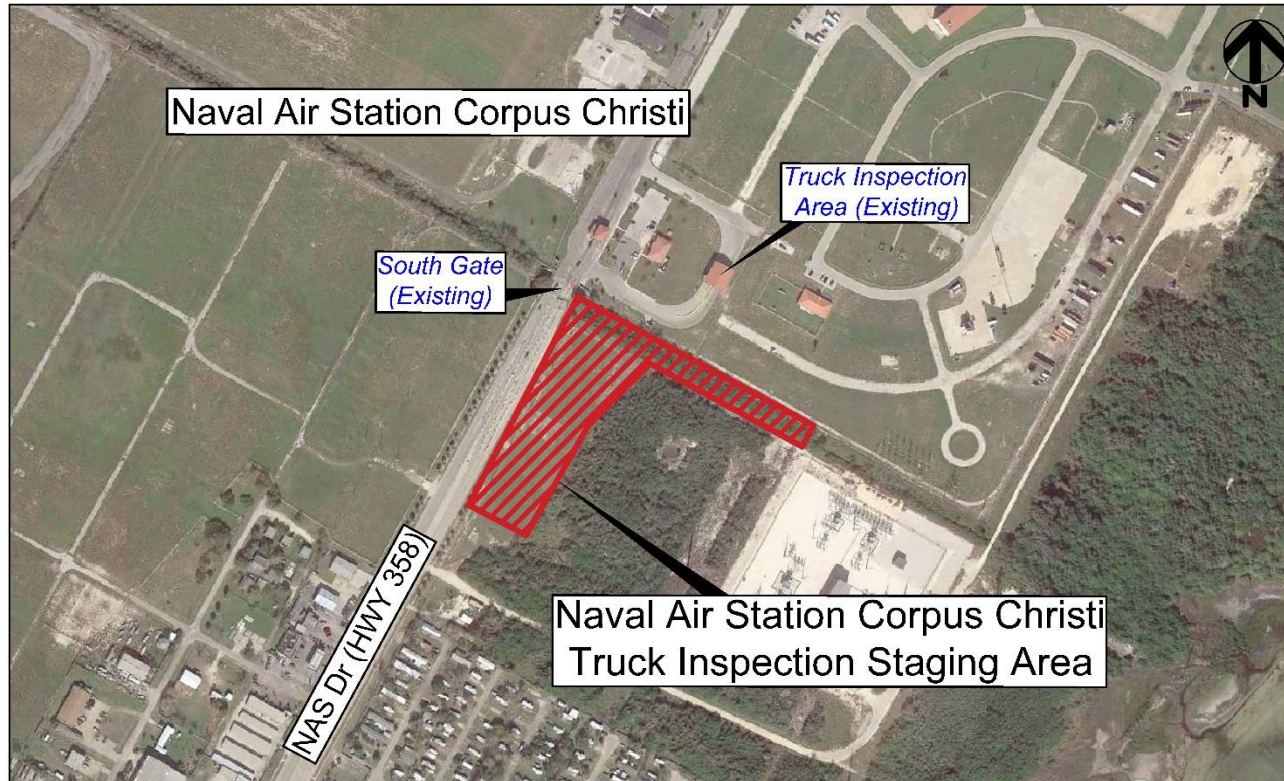
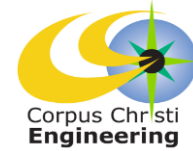


Project Location



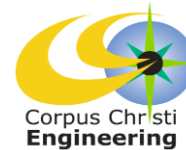


Project Vicinity





Project Scope



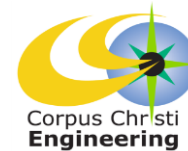
Provides improved security and safer vehicle movements to enhance NASCC infrastructure and mission with the new Truck Staging Area at the south gate of NASCC that includes:

- New concrete pavement staging area and driveways
- New bridge with dual 48" RCP over the existing approximate 60' channel
- Channel excavation, clearing and stabilization (250LF Base Bid with 1,000LF by Additive Alternative)
- New lighting, chain-link security fencing and gates with other miscellaneous. site and other improvements

* NASCC will provide construction inspection and oversight with coordination with City Engineering Services



Project Schedule



2016							2017										
J	J	A	S	O	N	D	J	F	M	A	M	J	J	A	S	O	N
Design							Bid Award			Construction							

Construction Estimate: 180 days