

## EXHIBIT A

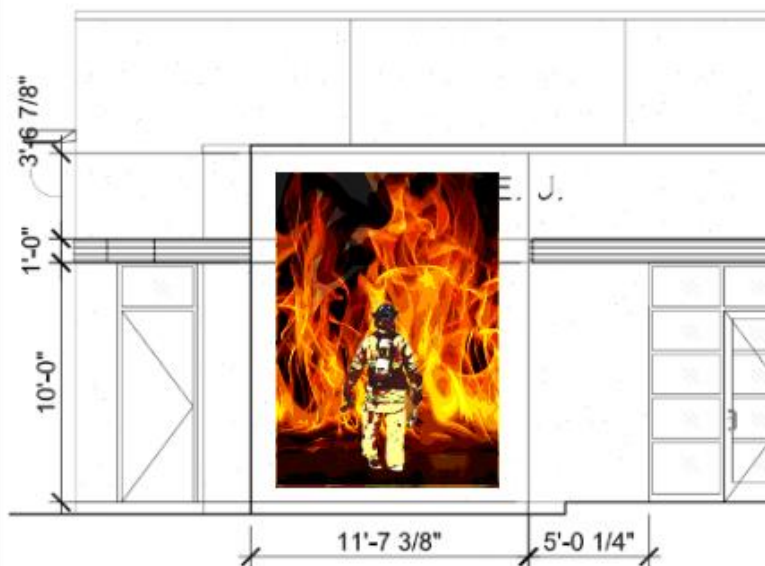
### Fire Station No. 18 Public Art

Three tile mosaics attached to the exterior:

- 8 x 12 foot image of a Corpus Christi Fire Fighter in bunker gear entering a fire
- Approximately 2.5 x 2.5 foot mosaic of the Corpus Christi Fire Department's Patch
- Approximately 2.5 x 2.5 foot mosaic of the Corpus Christi Maltese Cross



### Mosaic 8'x12'



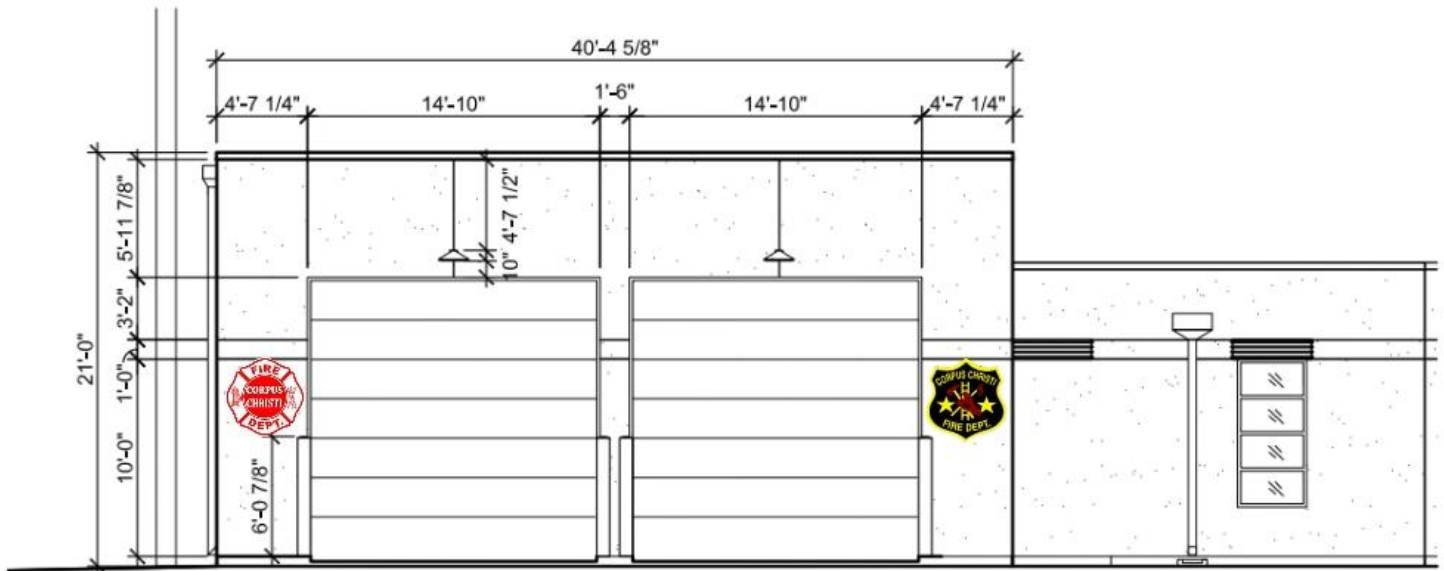
NOTE: FIELD VERIFY ALL DIMENSIONS PRIOR TO ART INSTALLATION

PARTIAL EXTERIOR ELEVATION

SCALE: 1/4" = 1'-0"

## EXHIBIT A

Fire Station No. 18  
Public Art



Maltese Cross



Fire Department Patch