



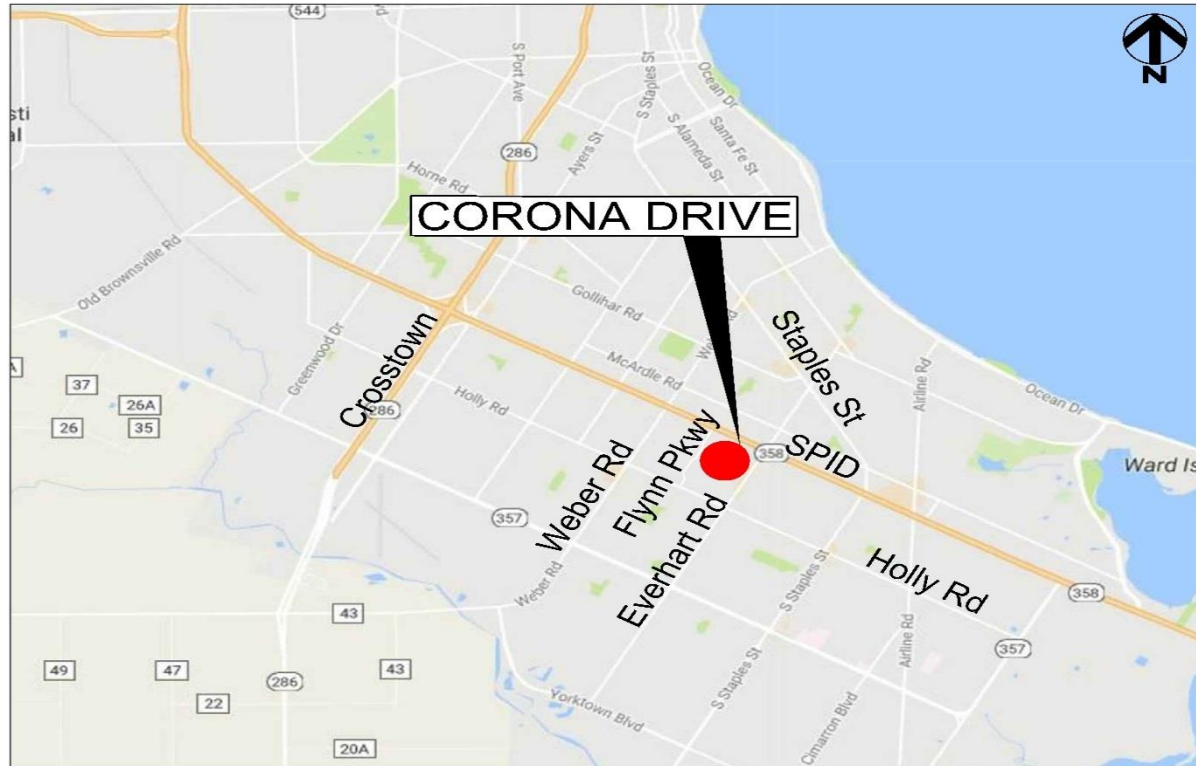
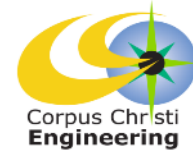
Corona Drive Flynn Parkway to Everhart Road BOND 2014, Proposition 1



**Council Presentation
July 25, 2017**

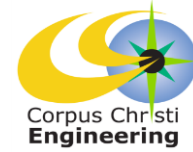


Project Location





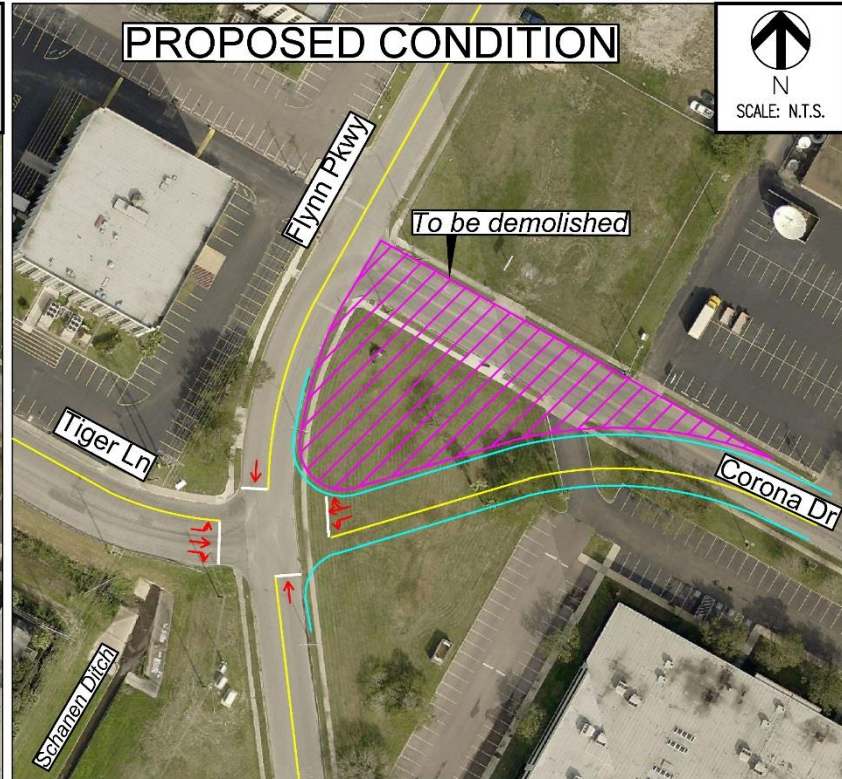
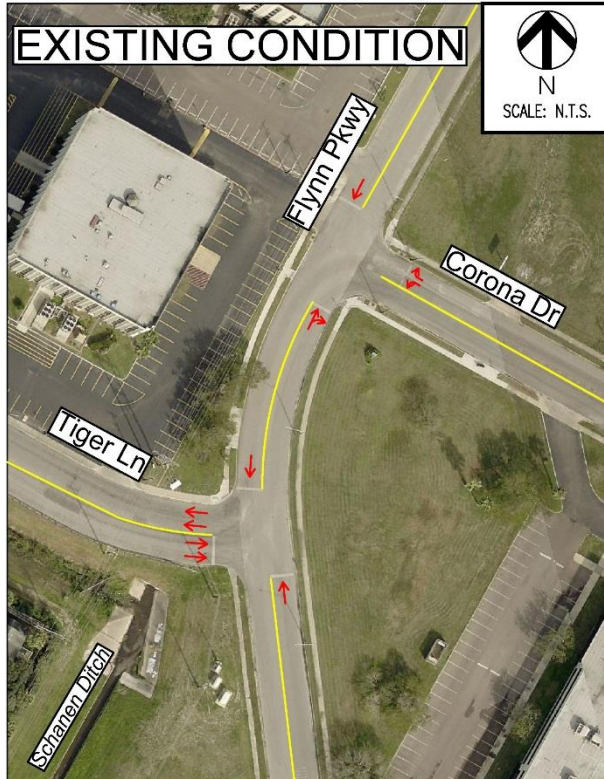
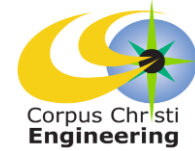
Project Vicinity





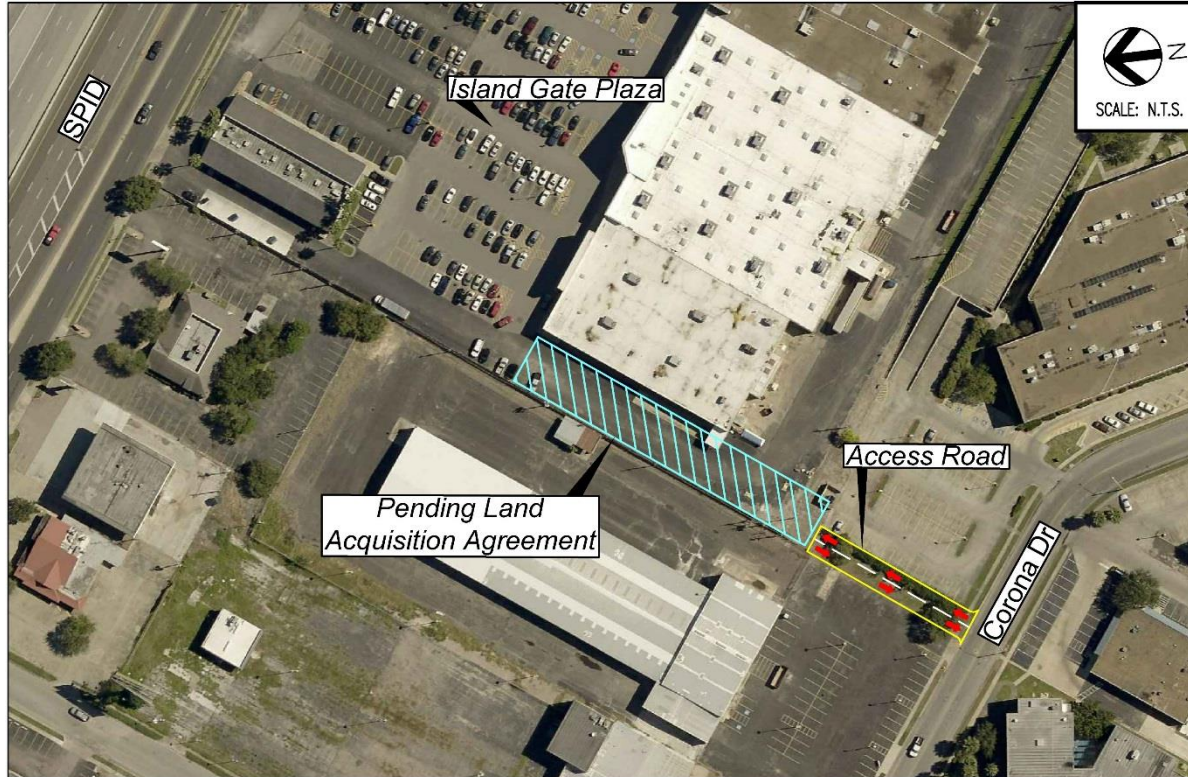
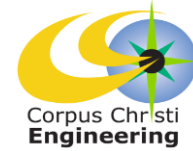
Proposed 4-way Intersection

TIGER LN (CORONA DR) and FLYNN PKWY



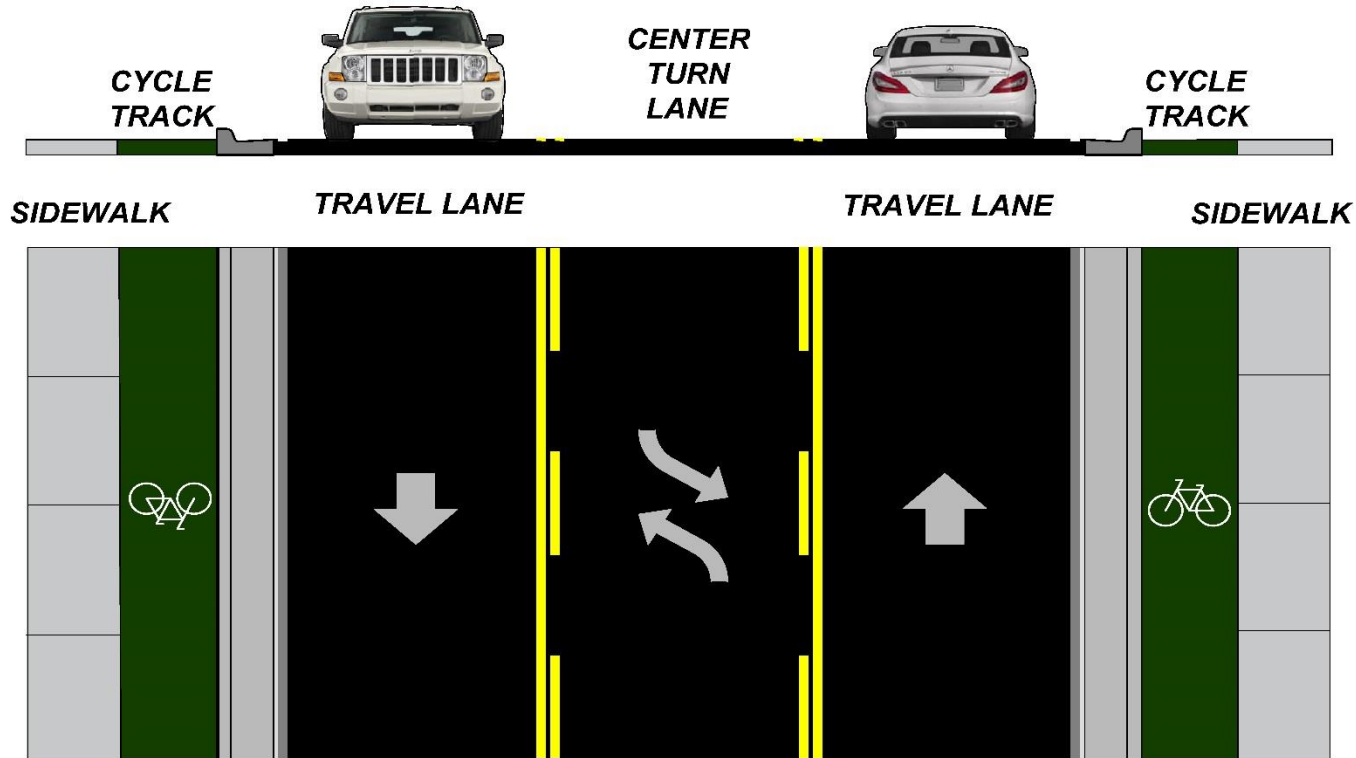
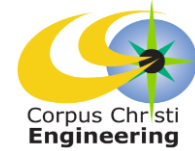


Proposed Access Road to Island Gate Plaza



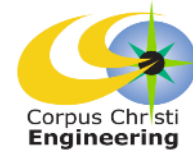


Cross Sections





Project Scope

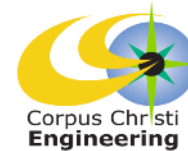


Full reconstruction HMA pavement with concrete bus pads, curb & gutter, sidewalks, ADA ramps, and pavement markings and signage with the following additional elements:

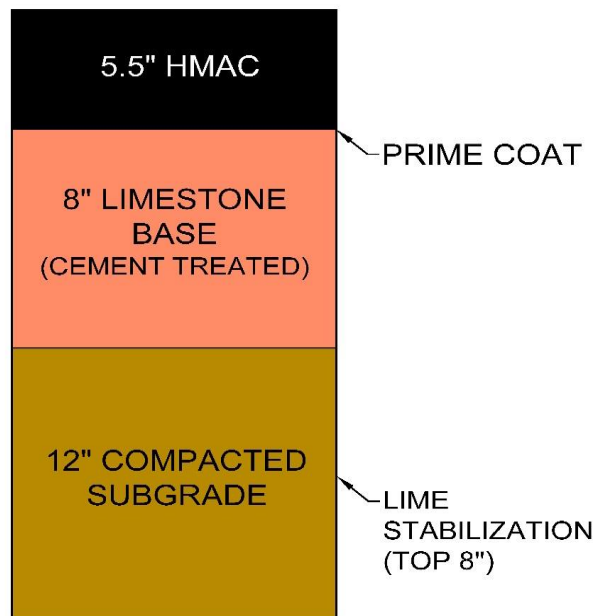
- New off-street cycle tracks, markings, signage, and area illumination improvements
- Traffic signal upgrades at the Everhart intersection
- Roadway reconfiguration from 2-lanes to 3-lanes with a continuous center turn lane
- Re-alignment of both the Corona/Flynn Parkway and the Corona/Tiger Lane intersections to form a single 4-way intersection
- New access road to Island Gate Plaza
- Utility upgrades for water, wastewater, storm water and gas



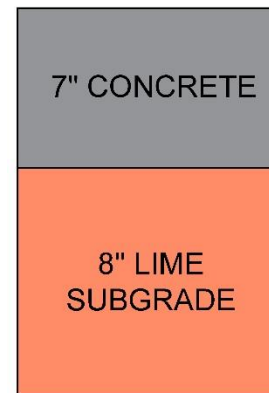
Corona Drive Cross Sections



HOT MIX ASPHALT CONCRETE (HMAC)

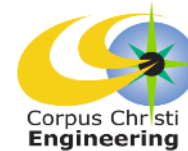


NEW ISLAND GATE DRIVE





Project Schedule



2017							2018			
J	J	A	S	O	N	D	J	F	M	A
Bid/ Award		Construction								

Construction Estimate: 270 days
9 months

**** Requires specific coordination with TxDOT
SPID Ramp Reversal and Holiday traffic**