



Unified Development Code Text Amendments

City Council Presentation
August 8, 2017



Townhouse Standards

Townhouse DISTRICT	Townhouse
Min. Site Area (sq. ft.)	20,000
Min. Lot Area Per Dwelling Unit (sq. ft.)	
Front Access	2,600
Rear Access	2,200
Shared Parking	1,600
Min. Dwelling Unit Lot Width (ft.)	
Front Access	26
Rear Access	22
Shared Parking	16
Min. Yards (ft.)	
Street	10
Street (corner)	10
Side (single)	0
Side (total)	0
Rear	5
Min. Building Separation (ft.)	10
Min. Open Space	30%
Max. Height (ft.)	45



Boat/RV Storage Building Height

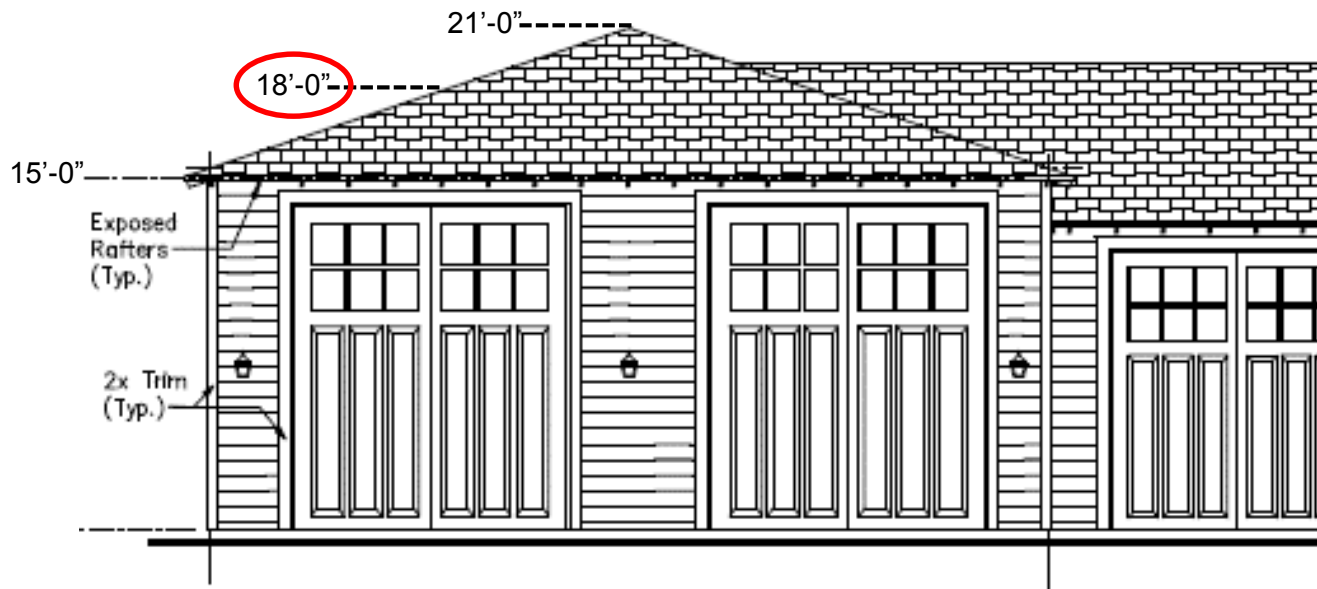
5.2.14 Self-Service Storage, Including Boat and RV Storage

A self-service storage establishment, including boat and Recreational Vehicle ~~Park~~ storage, shall be permitted in accordance with the use tables in Article 4 subject to the following standards:

D. In the “CR” Resort Commercial zoning districts, wall-mounted or freestanding lights ~~a storage building~~ shall not exceed ~~15~~ 20 feet in height.



Sample Impacted Project





Landscaping

7.3.12.E Tree ~~of~~ or Palm Requirement

A minimum of 50% of all required points shall be achieved through tree or palm plantings.



Recommendations

Planning Commission and Staff recommend approval of the proposed amendments to the Unified Development Code.