

Corpus Christi International Airport (CCIA) East General Aviation (GA) and Terminal Apron Reconstruction



**Council Presentation
October 31, 2017**

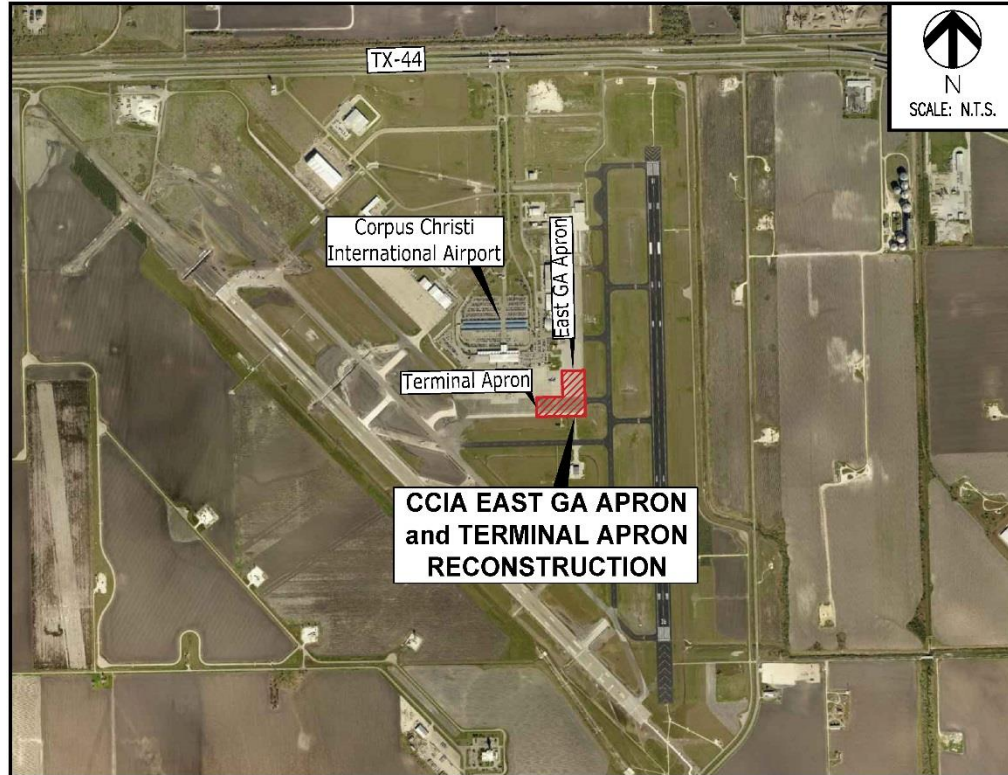
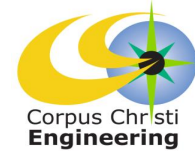


Project Location



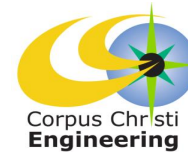


Project Vicinity





Project Scope



This is a joint FAA/City project with respective cost sharing of 90/10 to rehab/reconstruct the Terminal and East General Aviation Aprons. The combined aprons total approximately 161,000 SY that include both HMAC and PCC pavement.

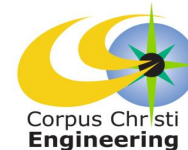
This item includes construction award for Phase 2 of 6.

Construction award of Phase 2 includes Base Bid plus Additive Alternatives 1, 2, & 3 to SpawGlass Civil Construction, Inc. with the following:

- Replacement of 13,597 SY of existing HMAC with new PCC pavement with associated excavation, grading, compaction and concrete placement
- New pavement markings
- Electrical upgrades for airfield lighting and signage
- Drainage improvements



Project Schedule

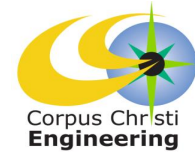


2016			2017												2018											
O	N	D	J	F	M	A	M	J	J	A	S	O	N	D	J	F	M	A	M	J	J	A	S	O	N	
Design									Bid/ Award					Construction												

Projected Schedule reflects City Council award in October 2017 with anticipated completion in November 2018.



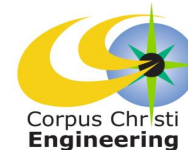
Project Scope



Questions?



Project Scope



Rehabilitate Terminal Apron, Base Bid

This phase will consist of the rehabilitation of approximately 7,733 S.Y. of Hot-Mix Asphalt Concrete with Portland Cement Concrete, grading, pavement markings, and electrical and drainage improvements

Rehabilitate East GA Apron, Base Bid

This phase will consist of the rehabilitation of approximately 2,635 S.Y. of Hot-Mix Asphalt Concrete with Portland Cement Concrete, grading, and pavement markings.

Additive Alternate I

Additional East General Aviation Apron Reconstruction for this project consists of the reconstruction of approximately 1,615 SY of Hot-Mix Asphalt Concrete with Portland Cement Concrete, grading, pavement markings, and electrical improvements.

Additive Alternate II

Additional East General Aviation Apron Reconstruction for this project consists of the reconstruction of approximately 807 SY of Hot-Mix Asphalt Concrete with Portland Cement Concrete, grading, pavement markings, and electrical improvements.

Additive Alternate III

Additional East General Aviation Apron Reconstruction for this project consists of the reconstruction of approximately 807 SY of Hot-Mix Asphalt Concrete with Portland Cement Concrete, grading, pavement markings, and electrical improvements.
